

# Pressing the Point

September 2024

**CPSA**  
Colored Pencil Society of America

District Chapter 117 | Palm Coast FL



**We meet on the 3<sup>rd</sup> Sunday of each month at 1:00 PM (except July & August).**  
***Please check the website for any scheduling changes.*** [www.cpsa117.org](http://www.cpsa117.org)

**CPSA**  
Colored Pencil Society of America  
District Chapter 117 | Palm Coast FL



## **Pat Lentine, CPSA, CPX and Hanneke Jevons, CPSA**

**Sunday, September 15, 2024  
1:00PM, Eastern Time on Zoom**

**Pat Lentine, CPSA, CPX** will present mixed media for the first half of the September program. She will demonstrate selected techniques for backgrounds and for use over colored pencil. Expand your repertoire of mixed media for *CPSA Explore This!*

In the second half of the program, **Hanneke Jevons, CPSA** will share her new work with colored pencil on laser-etched wood. Over the summer, Hanneke collaborated with a woodworker who has a laser machine that can etch original drawings on wood. He etched Hanneke's drawings and then she applied colored pencil to create a new image. Join us for an exciting use of colored pencils on wood.

## Welcome Back !

~ ~ ~

*Time for a new  
season of pencil  
delights. Join in,  
share your sum-  
mer adventures,  
and reconnect.*



[\*A Little Publicity\*](#)

[September  
Meeting](#)

[June  
Meeting](#)

[CP 2025  
Cruise](#)

[Member  
Recognition](#)

[2024 Member  
Show](#)

[Classes](#)

**September ~ “September tries its best to have us forget summer” ~ Bernard Williams**

Well, I'm not so sure that we will soon forget the heat that the entire country experienced this summer. In this first hint of autumn, it is a time of renewal and new opportunities, or perhaps a return to comfortable routines for some. For us, it is a time to share for sure. We are looking forward to hearing all about your summer!

- ♦ **Program** ~ This month we have a dual presentation by **Pat Lentine** and Hanneke Jevons. Pat will present mixed media, demonstrating techniques for backgrounds and uses with colored pencil ~ which can be used for *CPSA Explore This!* entries. **Hanneke Jevons** will introduce an exciting new technique of colored pencil on laser-etched wood.
- ♦ **2024 Show** ~ Hopefully, you had an opportunity to capture your summer adventures with paper and pencils! Don't forget to enter the show by **September 22nd**. Remember, it's both in gallery and online.
- ♦ **Talent Search** ~ As was mentioned at the June meeting, we would love for you to step up and share your talents with the Chapter. Areas include programs (planning or presenting), newsletter, website, publicity, special events (like the K-9 portraits), or any new idea that you may have that would enhance the experience for the membership.
- ♦ **Facebook** ~ We would love to have you join us on Facebook. This is a great forum to share your works in progress. It is an opportunity to share your insights as well as pick up a few tips. We hope to see you there!

***We look forward to seeing everyone at the meeting !!***

There are now 65 folks signed up! This is a *can't miss* cruise!  
Questions? Please reach out via email or directly with Go Travel.

# 2025 Colored Pencil Cruise On Celebrity Equinox



7 Day Eastern Caribbean Cruise Departing Port Canaveral on March 29, 2025 Returning April 5



## Itinerary

- Day 1 Saturday March 29 -Port Canaveral Depart: 3:30 PM
- Day 2 Sunday March 30 - At Sea
- Day 3 Monday March 31 - Puerto Plata, Dominican Republic
- Day 4 Tuesday April 1 - San Juan, Puerto Rico
- Day 5 Wednesday April 2 - Philipsburg, St Maarten
- Day 6 Thursday April 3 - At Sea
- Day 7 Friday April 4 - At Sea
- Day 8 Saturday April 5 - Arrive back at Port Canaveral

Classes, Seminars and Workshops offered during 3 days at sea

Guest instructors: Bonny Snowden and Pat Lentine

Registration Link: [https://gotravelinc.formstack.com/forms/pencil\\_art\\_2025](https://gotravelinc.formstack.com/forms/pencil_art_2025)

For information Contact: Peter Kushner, (508)208-6136, [peterkushner@me.com](mailto:peterkushner@me.com)

Here is a clickable link from the flier for ALL the information:

[https://gotravelinc.formstack.com/forms/pencil\\_art\\_2025](https://gotravelinc.formstack.com/forms/pencil_art_2025)

## ***CPSA-DC117 2024 Open Show***

### **Colored Pencil Expressions**

***Announcing the 2024 show!*** We would love to see at least one entry from each member ~ this would be a wonderful feature going into our **20th anniversary year**, something that we can share with our fellow chapters across the country. The show will be both in the gallery and online as we have done before.

This show will be judged with awards. We haven't done this since before Covid!

So, prepare your pencils, there is still time to get your entries in. See the **prospectus** (next page) for all the particulars.

### **Expressions Art Gallery**

(Grand Haven Realty, 2298 Colbert Lane, Palm Coast, FL)

Key dates:

- **Show dates are October 6 - November 16, 2024**
- Registration July 1 through September 22
- Entry deadline September 22
- Drop off October 2, 5:00 pm
- Reception October 6, 1:00-3:00 pm
- Pick up November 17, 10:00-12:00 pm

## **CPSA-117 Annual Member Exhibition**

### **Colored Pencil Expressions**

**October 6 – November 16, 2024**

#### **Expressions Gallery**

Grand Haven Realty, 2298 Colbert Lane, Palm Coast, FL  
Gallery hours are Monday thru Saturday, 9:00 AM – 5:00 PM  
Questions/emergency – Hanneke Jevons (386) 447-4744

#### **Prospectus**

1. This is a show for chapter members only; there is no fee to enter.
2. This is a dual show in-person at the local gallery and online.
3. Five submissions per member are permitted.
4. The gallery has a limitation of approximately 50 pieces to hang. The artist must indicate the priority of each piece to be hung if not all entries can be accommodated; however, all entries will be displayed online.
5. **Registration** will open **July 1** and go through **September 22, 2024**.
6. Submit your registration at [cpsa117palmcoast@gmail.com](mailto:cpsa117palmcoast@gmail.com). Include the following: your name, title of each entry, the dimensions (include the frame if local), and sale amount or indicate NFS (not for sale), and a photo.
7. Photos must be submitted not larger than 5 Mb and without any framing in the photo.
8. Works must have been completed in the last **5 years** and be either:
  - A)** 100% colored pencil on a manufacturer-prepared surface per the CPSA National International exhibition specifications, **OR**
  - B)** follow the “Explore This” specifications where the piece is predominantly colored pencil, but includes another medium (ink, pastel, w/c, etc.), collage, artist prepared surface, 3D surfaces, or any other technique, surface, or element that is not allowed for the CPSA International exhibitions.
9. Works that will be hung in the gallery must have a securely attached wire (not the alligator clips); also, please ensure your piece/matting is securely affixed to the frame.
10. The **opening reception** will be held on **Sunday, October 6, 2024, from 1:00 to 3:00 PM**. The drop off at the gallery is **Wednesday, October 2 at 5:00 PM**. Pick up will be **Sunday, November 17, 10:00-12:00 PM**.

## June 2024 Chapter Meeting

This month, **AJ Barr** welcomed everyone and introduced the Board members present. She also highlighted the **2025 Pencil Cruise** with all its benefits, including being with like-minded friends and very popular instructors ~ our own **Pat Lentine** and **Bonnie Snowdon**.

**John Robak's** offer to do a *To the Point* article about our inspirations (from last month's meeting) was discussed, with everyone encouraged to participate.

**Hanneke Jevons** gave some information on the upcoming **2024 show** with the dates (repeated elsewhere in the newsletter). Entries can be 100% colored pencil or follow the Explore This guidelines. The show will be in the Palm Coast gallery and online.

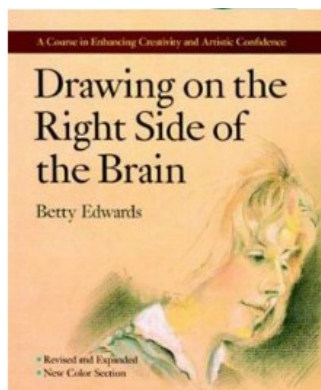
Everyone was reminded that there are no chapter meetings during July and August. This is a great time to get those show entries completed!

**AJ** then gave a bit of an editorial, commenting on the behind-the-scenes hard work that the Board puts in. It is no accident that our membership is currently 68 strong; this is due to dedicated board members. Many don't realize that the monthly board meetings are both in-person and via Zoom. The meetings are always pleasant, productive, and supportive as the board is united in the goal to provide the best experience for our members with this special art forum. AJ encouraged members to express their appreciation and to consider stepping up to participate in the planning and/or to join the Board. There are many areas that could use your help ~ program planning or presenting, newsletter, website, and any other creative ideas that you may have.

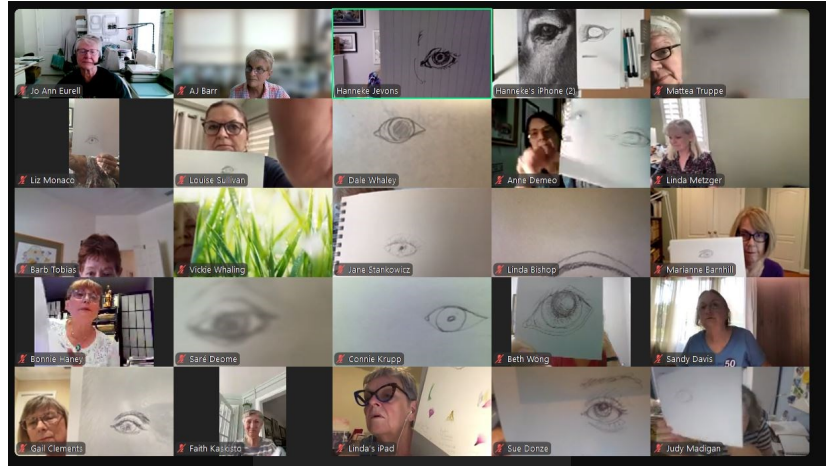
Hanneke Jevons then started her presentation "**Eyes are More Than What You See.**" Hanneke's love of animal is well known and she is an award-winning artist for both

colored pencil (CPSA Signature status) and photography. Hanneke starts with getting the right photograph from which to draw. This is not a class on how to draw eyes, but to see what you are drawing differently. She recommended the well-known book

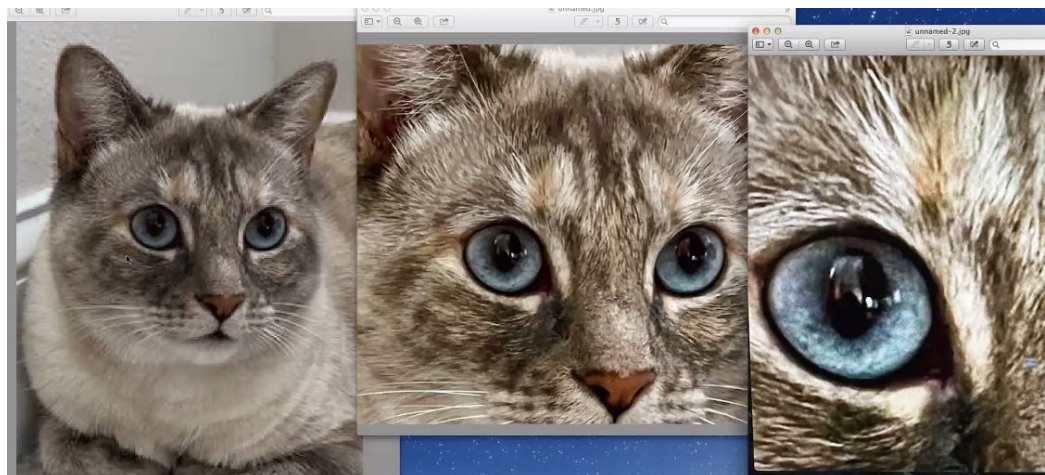
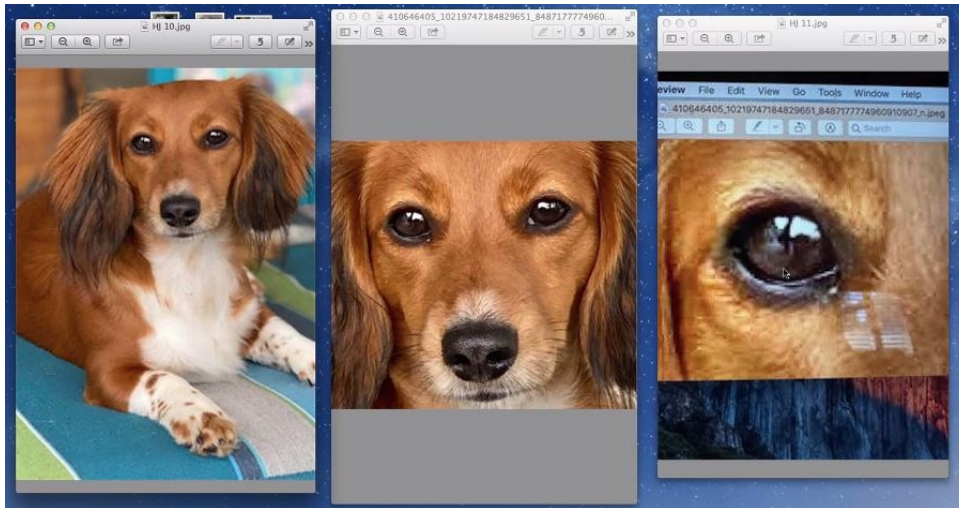
"Drawing on the Right Side of the Brain" by Betty Edwards.



The book postulates that the drawing side of the brain is the right side, and the thought and speech is the left side. How do you develop that right side? Hanneke had the group do an exercise of drawing an eye from memory only in one minute. Then the sketches were briefly shared. Hanneke stated that we all drew from the left side of our brains, that is, drawing from memory. But the artist needs to use the right side to draw what they really see, to focus in on the soul of the animal and seeing what's going on in the reflection of the eye, what is the animal seeing.



Hanneke opened up various photographs to compare the expressions and details in each animal. She will take a photo and expand it to see each feature clearly, even to the point of seeing another scene within the eye reflection.



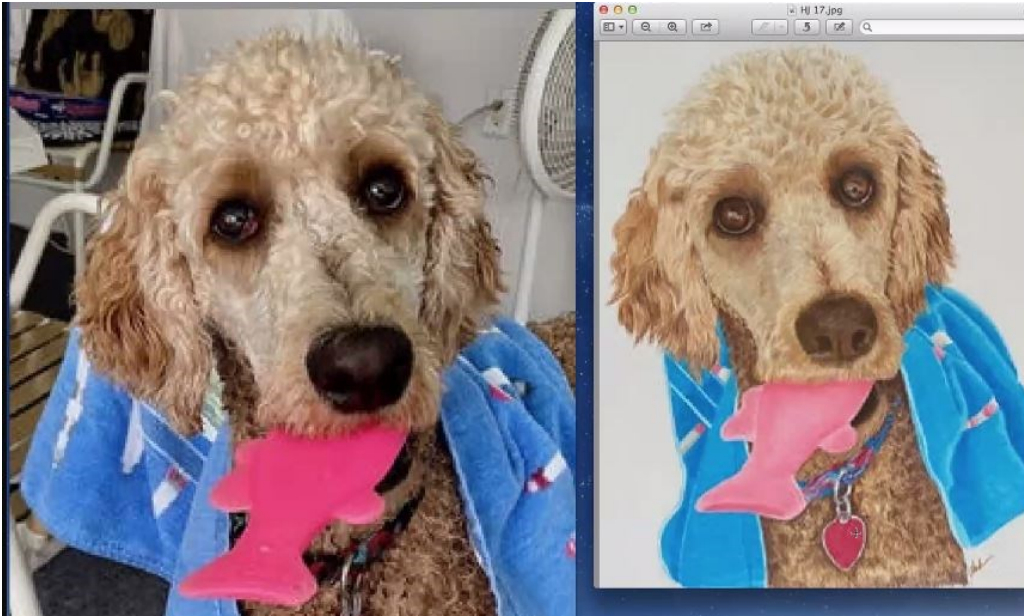


Photo and drawing of Keena, with very expressive eyes.

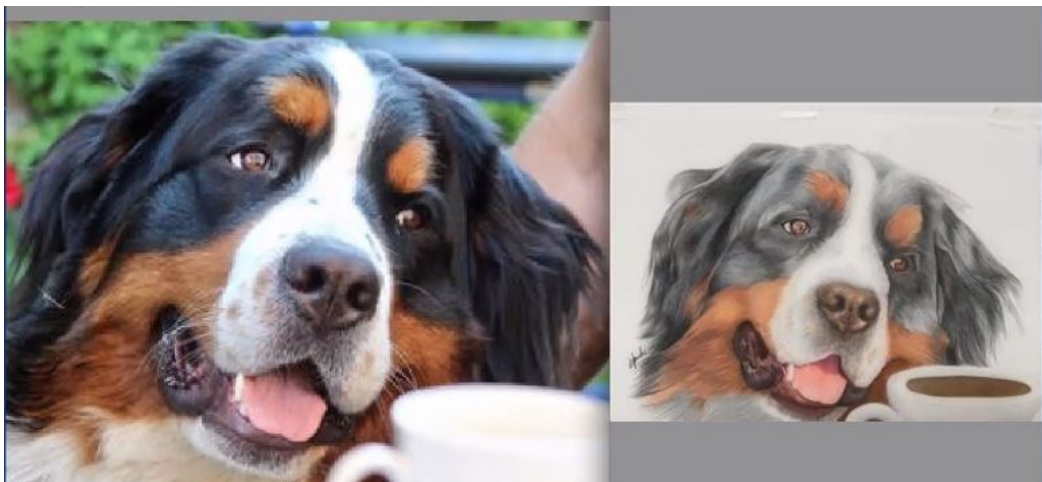
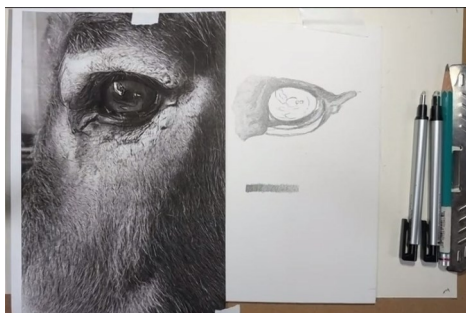


Photo and drawing of pet portrait.

Up close, the eyes have many different colors due to the reflections. The pixels will show the various colors.

The ultimate example of Hanneke's focus on the eye is her piece "Eye Phone" where you can see the iPhone taking the picture within the reflection of the eye.

The demonstration subject was a wonderful photo of **Cliff**, the donkey, a close up of his eye. Hanneke shared a

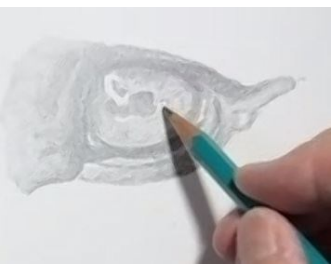


bit of her process to begin the eye. She first focuses on the eyes and the nose. If the eyes aren't right, the portrait will not be successful. She starts with a **2B** pencil and develops a value scale; and also takes care to trace the reflections. Values and contrast are the two most important attributes of a drawing.



Hanneke goes to the darkest part of the eye and starts to build up the values by going slowly and feathering out to the lightest areas. Hanneke starts from the outside to build the frame using a very soft circular motion. She continues to build up slowly with a very light touch.

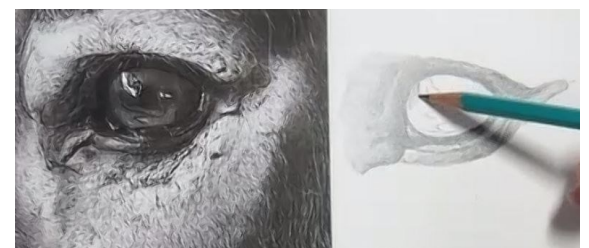
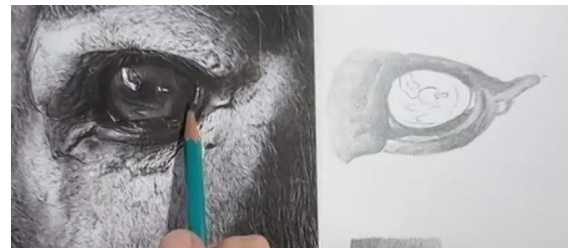
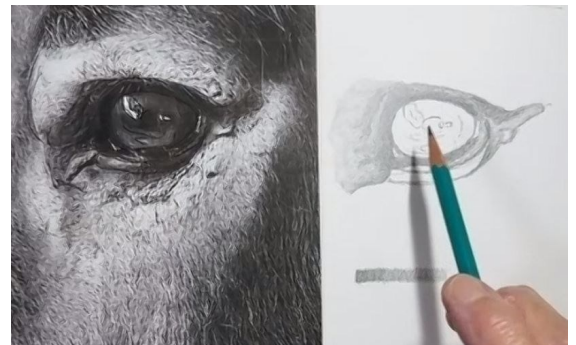
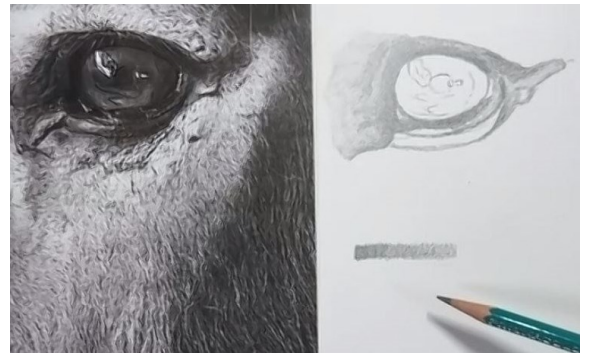
This also serves to make the eye a rounded sphere, which we sometimes forget. Working with the values helps accomplish this goal. Hanneke took 5 hours to draw this eye on her actual piece, with the entire project taking 3 weeks.



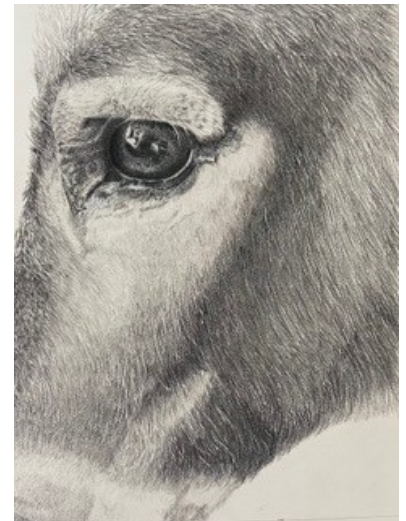
Now Hanneke begins to fill in the pupil making sure to leave the white areas alone. She constantly adjusts the adjacent areas to maintain the contrasts and to keep the rounded shape.

It's evident that Hanneke continually references the photo as seen in the pictures on this page. She also references the value scale that she created when starting the drawing. This is drawing what you **see** ~ not what you think you see. The eye is a piece of artwork in itself.

Hanneke also recommends the **Tombow Mono Zero Erasers** (both the rounded and flat ends) to draw in eyelashes and to help with other details. She uses the **Prismacolor Turquoise 2B pencil** as her favorite.



In summary, the following are the reference photo, final drawing, and a close up of the eye.



**Jo Ann Eurell**, a veterinarian, noted that different species have different pupils, some quite distinctive. She recommended doing some research on the animal anatomy prior to starting a project.

**Linda Metzger** noted that she will draw upside down, a recognized technique to learn to draw from the right side of the brain.

Hanneke shared another current project of a sleeping gorilla (so, no eyes) in black colored pencil, focusing on the contrast in the fur. This, too, emphasizes the importance of values and contrast.



**Thank you, Hanneke**, for such an in-depth presentation highlighting what are considered very critical facets of art ~ the element of value and the principle of contrast.

But, even more fundamentally, to create art from the right side of the brain ~ to draw what we really see, not what we think we are seeing (i.e., memory). This is

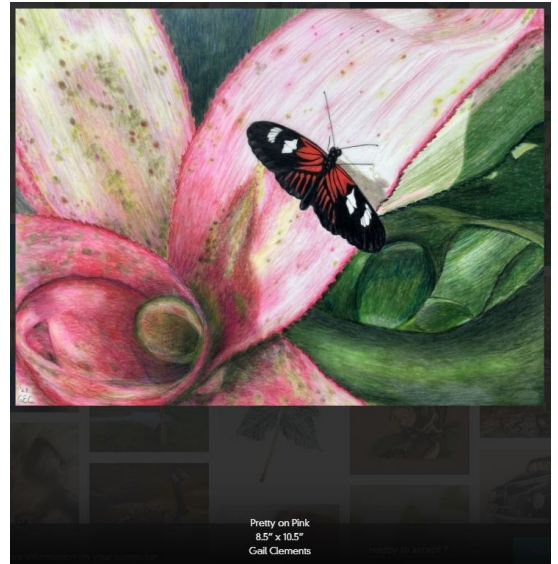
a profound concept that can take each of us to new depths of insight with our art. There is no better way to gain that insight than through the eyes of our subjects, from beloved pets to wonderful wildlife, to see what they see while we strive to draw what we see.



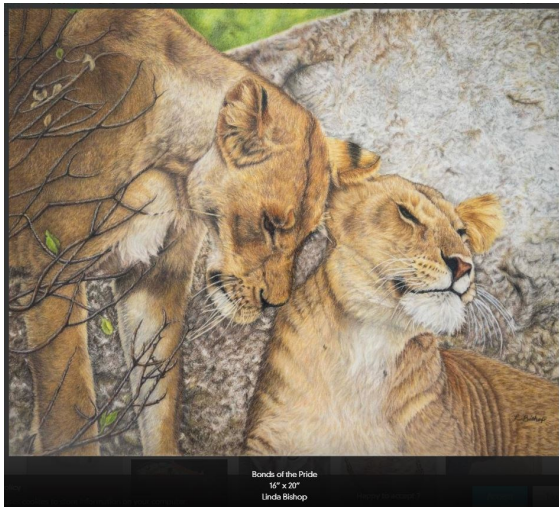


***Congratulations ~ to our members accepted in the Kullberg 25th Annual Member Show, 2024 !!***

**Gail Clements  
Advanced**



Pretty on Pink  
8.5" x 10.5"  
Gail Clements



Bonds of the Pride  
16" x 20"  
Linda Bishop

**Linda Bishop  
Advanced**

**John Guiseppi  
Professional**



59 Cadillac El Dorado  
21" x 14"  
John Guiseppi  
www.johnguiseppi.com

**Linda Metzger  
Professional**



Positively Glowing  
9" x 12"  
Linda Metzger  
www.LindaPetPortraits.com

## Ann Kullberg's *Color Magazine*


August 2024

### "The Pencil Box" Feature

By Linda Metzger ~ Congratulations!

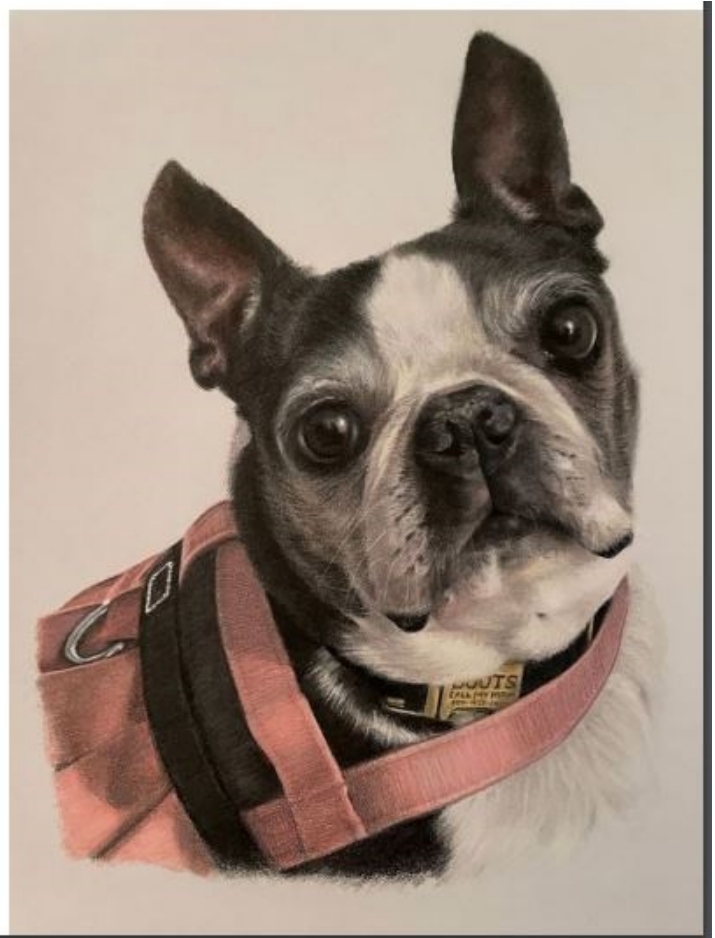
#### Boots

12" x 9" | Linda Metzger | Photo by Amanda Treague

 Lmmportrait

Boots was one of those special dogs who went everywhere with her mom. She was a local celebrity in Winter Garden, Florida. She was so loved, from boat rides and pup cups to going shopping and to work every day. I have an annual pet portrait contest, and her photo won second place! Her mom was already planning to have me draw her when Boots unexpectedly passed away. The portrait took on new meaning and purpose. Together we looked through her Instagram account to find the perfect picture. Although the photo quality was not the best, this one had that look that captured her presence. I used other photos to help with the details. Amanda had it framed right away and asked me if I'd intentionally drawn her eyes so that they would follow her as she walked around the house (I wish that I knew how to do that). The thought that what I draw with pencils may bring happy memories and a smile to someone's day brings me joy!

[annkullberg.com/blogs/ann-muses/tagged/the-pencil-box](http://annkullberg.com/blogs/ann-muses/tagged/the-pencil-box)



# Discover colored pencil as a fine art ...

We are CPSA-DC 117 Palm Coast (Colored Pencil Society of America, District Chapter 117).

If you would like to explore this affordable and portable art medium, you are welcome to join this vibrant and creative chapter, open to all, whether you are a beginner or advanced.

We hold monthly meetings with featured presenters, participate in gallery shows, attend CPSA conventions, and engage with the community. Our members are not just local to Palm Coast, but span the country from the East and West Coasts, from the North to South, and throughout Florida. All our members are eager to share their knowledge and experiences, and many are award-winning artists.

This year our Chapter created K-9 portraits for the Flagler County Sheriff's Office to recognize and honor the services of both the officers and their canine partners. Each K-9 has a specialty and the teams work faithfully to keep our community safe. The portraits were presented as gifts to the department at an event with Sheriff Staly, the officers, and the K-9's in attendance.

Next year is our 20th anniversary! We are planning events to celebrate this milestone (including a cruise opportunity). What a great way to start your colored pencil journey. Or perhaps you are an experienced pencil artist or instructor looking for a new connection. Consider joining us during this special time.

We seek to use the artistic talents of the Chapter to not only promote the arts, but to enrich and broaden the creative and social interests of individuals and the community. We also actively interact with other chapters across the country, which provides far-ranging exposure to the generously shared talents of many artists.

Our upcoming events are:

- Chapter meeting via Zoom on June 23 (Sunday, 1:00 PM)
- Member Exhibition October 6 through November 15, 2024, with the opening reception on October 6, 1:00 PM (Expressions Gallery, 2298 Colbert Ln, Palm Coast).

For more Chapter information on events and membership, please contact us.

Website: [cpsa117.org](http://cpsa117.org)

Email: [cpsa117palmcoast@gmail.com](mailto:cpsa117palmcoast@gmail.com)

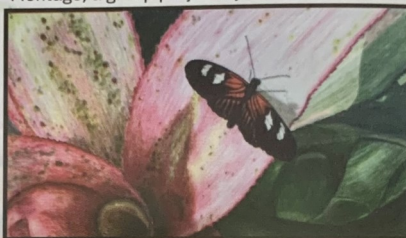
To learn more about the CPSA Governing Board, view national exhibition entries, and see what CPSA has to offer, go to: [cpsa.org](http://cpsa.org)

"CPSA remains firmly dedicated to the fundamental principles of inclusion and diversity, and to racial justice as an inalienable human right."



Bridge of Lions

Montage, a group project by 24 of the members



Pretty in Pink - Artist Gail Clements (won a chapter award for this piece)



Chapter workshop example

Fierce, Loyal, Strong - Artist Pat Meskell (won a chapter award for this piece)



FCSO K-9 Event Presentation to Sheriff Staly by Linda Doup

FCSO K-9 Axle Artist Linda Doup



21

## We're in the News !!

A local Palm Coast magazine printed a short article about the chapter.

**A big thank you to Faith Kaskisto** for contacting the publication and setting this up.

**Palm Coast**  
THE OFFICIAL PUBLICATION OF EVERYTHING PALM COAST

**\$1,000,000 TREASURE HUNT**  
See Page 24

**FIND PALMER WIN \$50!**  
See Page 5

**EXCLUSIVE ACCESS**  
TO THE BEST PROMOTIONS AT THE BEST BUSINESSES

**COMING IN NOVEMBER**  
Exclusive Promotions at the Best Businesses All Around Town

**COVER STORY**  
The Best Investment in the State

**REAL ESTATE**  
Cynthia Weston, PA  
RE/MAX 3019

**Southern Girl**  
Consignment & Decor

Volume 3 Issue 6  
July 2024

**Palm Coast**  
MAGAZINE

[palmcoastmag.com](http://palmcoastmag.com)  
Issue #35

## Classes Offered by Members

### Hanneke Jevons

**Open Studio** for colored pencil in my home on Wednesdays and Fridays from 2:00 to 4:00 PM. Space limited to 4 students. Please contact Hanneke at [han-noart@bellsouth.net](mailto:han-noart@bellsouth.net)

### Pat Lentine

**Colored Pencil and Pastel Artists - online Zoom classes:** Each student brings to class a project they want to start. Individual input on each project. Class limited to 10 students. Tuesdays 7:00 - 9:00 pm and Wednesdays 1:00 - 3:00 Eastern. Register at my website [www.patlentine.com/](http://www.patlentine.com/) or contact Pat at: [pat@patlentine.com](mailto:pat@patlentine.com) and 407-758-4437

**Mixed Media Painting & Drawing:** The Artists' Workshop of New Smyrna Beach, Mondays, 5:00 - 7:00 PM. This class is for students of all levels who want to improve their skills in colored pencil, pastel, acrylic, and watercolor. Pat will help you figure out how to start, make decisions, solve problems, and give finishing touches to your projects. Contact: [pat@patlentine.com](mailto:pat@patlentine.com) and 407-758-4437

### Priscilla Humay

Teaching at Ormond Memorial Art Museum ([ormondartmuseum.org](http://ormondartmuseum.org))

**Draw & Refresh in Colored Pencil:** Wednesday, November 13, 2024

“Explore color for your own personal expression and sharpen your drawing skills by developing techniques, from basic to refined (strokes, grisaille, layering, value, intensity, temperature, texture). The objective of the class is to answer your questions about the colored pencil medium and to develop skills that will enable you to understand color and its application.

### Kathi Darby

Teaching at Ormond Memorial Art Museum ([ormondartmuseum.org](http://ormondartmuseum.org))

**If you are offering instruction, please let us know  
so your information can be included in future issues.**

## Our Board Members

CPSA-DC 117

### President:

Judy Madigan

### Vice President:

Pat Lentine

### Secretary:

Priscilla Humay

### Treasurer:

Kathi Darby

### Membership:

Linda Doup

### Newsletter/Website:

AJ Barr

### Historian:

Kathy Viehe

### Publicity:

Jo Ann Eurell

### President Emeritus:

Hanneke Jevons

## Membership Information

### Chapter Membership Benefits:

- Networking with other colored pencil artists
- Participation in sketch groups
- Member discount rate for local workshops
- Chapter newsletter
- Opportunities for exhibits and event participation

*A member of the local CPSA DC117 St. Augustine Chapter must also be a member of the Colored Pencil Society of America.*

### The benefits of CPSA membership are worth it:

- A national newsletter, To The Point, twice yearly.
- Product research, pigment identification, lightfast information
- Lower entry fee for annual CPSA exhibitions
- Lower rate for workshops at CPSA Convention
- International membership networking directory
- District Chapters for local and regional networking
- Free link to your website
- Ability to earn Signature status
- NOTE: Only CPSA members who have attained Signature Status may use the initials CPSA or CPX after their name.

CPSA remains firmly dedicated to the fundamental principles of inclusion and diversity, and to racial justice as an inalienable human right.

### Newsletter Contact Info:

For submissions and requests to be profiled, please contact either AJ or Linda.

**AJ** 386-283-2433

cpsa117palmcoast@gmail.com

**Linda** 386-295-0486

lindadoup@att.net



### MEMBERSHIP APPLICATION

New Membership       Renewal

Check if you have paid CPSA National

NAME: \_\_\_\_\_

ADDRESS: \_\_\_\_\_

CITY: \_\_\_\_\_ STATE: \_\_\_\_\_

ZIP CODE: \_\_\_\_\_

EMAIL: (Please print) \_\_\_\_\_

PHONE(s): \_\_\_\_\_ (Home) \_\_\_\_\_ (Cell)

- Annual chapter dues are **\$20**.
- Membership year runs from November 1st to October 31st.
- Applications for CPSA National can be obtained through the website: [www.cpsa.org](http://www.cpsa.org)

**GO TO THE WEBSITE [cpsa117.org/membership](http://cpsa117.org/membership) to complete the online form.**

**Then to the Store page to complete the payment. Thank you!**