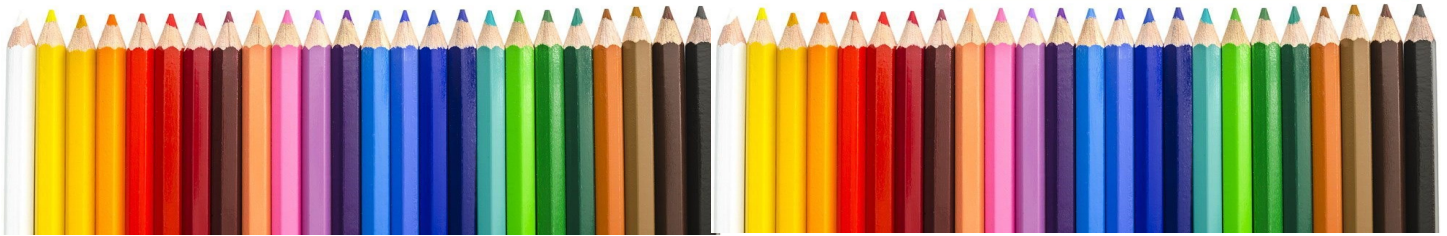


# Pressing the Point

October 2024

**CPSA**  
Colored Pencil Society of America

District Chapter 117 | Palm Coast FL



**We meet on the 3<sup>rd</sup> Sunday of each month at 1:00 PM (except July & August).**  
**Please check the website for any scheduling changes. [www.cpsa117.org](http://www.cpsa117.org)**

**CPSA**  
Colored Pencil Society of America  
District Chapter 117 | Palm Coast FL



"COLORED PENCIL EXPRESSIONS"  
OPENS OCTOBER 6, 2024!!

**Welcome New Member!**  
**Anna Andrews**  
Thank you for joining our Chapter!  
~~~

**Take a look at the 2024 Show to see the award winners and to celebrate everyone who participated!**

## Using Distress Inks and Distress Oxide Inks with Colored, Inktense, and Distress Pencils

**Sunday, October 20, 2024**  
**1:00PM, Eastern Time on Zoom**

We are excited to have *Liz Monaco* as our October presenter. Here is Liz's description of her recent work that she will be sharing with us:

"Working with *Distress Oxide Inks* is a delightful experience for crafters and artists alike. These pigment-based inks blend beautifully, allowing for seamless transitions of color and creating stunning effects on various surfaces. Their unique formulation means they react with water, producing soft, watercolor-like washes that can be layered for depth. Whether you're creating backgrounds, stamping, or doing mixed media, the rich, opaque finish adds a touch of vibrancy. Plus, the variety of colors available inspires endless creativity, making it easy to experiment and discover new techniques. Overall, *Distress Oxide Inks* offer a versatile and enjoyable medium for bringing your artistic visions to life."

"I will demonstrate how to use these inks as backgrounds and how *CP, Inktense*, and *Distress* pencils work over these backgrounds. There are several tools that are used for a wet or dry application: water-filled brushes, sprayer bottles, cosmetic brushes and sponges, stencils, stamps and daubers besides the ink pads. The examples will show the before and after results using the pencils over the various backgrounds. Papers play a large role in the results. The heavier weight papers will work best with wet applications."

[2024 Show Awards](#)

[Gallery Opening](#)

[October Meeting](#)

[September Meeting](#)

[CP 2025 Cruise](#)

[Member Recognition](#)

[2024 Member Show](#)

[Classes](#)

**October** ~ “**October is a fallen leaf, but it is also the wider horizon more clearly seen**” — Hal Borland

It's hard not to love October. The summer heat is a distant memory (maybe!); in some parts of the country you are enjoying the colors of autumn; and in Florida it's the last month of hurricane season! All of our members who reside in Florida felt the impact of Milton; for some it was severe; for others just a mess to clean up. We would love to hear how everyone fared during the storm at the meeting.

- ♦ **Program** ~ This month we have a new and interesting medium presented by **Liz Monaco** on distress oxide inks and how she uses them in her work. Liz will demonstrate their application as backgrounds, then adding pencils over them with several tools and techniques. This will be an eye-opener for sure.
- ♦ **2024 Show** ~ The show opening was a success, both in-gallery and online. Be sure to check out the wonderful entries and the award winners.
- ♦ **Talent Search** ~ As was mentioned at the June meeting, we would love for you to step up and share your talents with the Chapter. Areas include programs (planning or presenting), newsletter, website, publicity, special events (like the K-9 portraits), or any new idea that you may have that would enhance the experience for the membership.
- ♦ **Facebook** ~ We would love to have you join us on Facebook. This is a great forum to share your works in progress. It is an opportunity to share your insights as well as pick up a few tips. We hope to see you there!

***We look forward to seeing everyone at the meeting !!***

**Be sure to visit the gallery in-person if you can and also on the website!**

**CPSA**

Colored Pencil Society of America

District Chapter 117  
Palm Coast FL



Colored Pencil Expressions

**October 6 - November 16, 2024**

**Expressions Art Gallery**  
inside Grand Living Realty  
2298 Colbert Lane, Palm Coast, FL

**Gallery hours: Mon-Fri 9am-5pm**

Please join us for a *Reception*  
Sunday, October 6, 2024  
1pm-3:30 pm

Online at [www.cpsa117.org](http://www.cpsa117.org)



**Artwork by:**  
Kathi Darby  
Hanneke Jevons CPSA  
Linda Metzger  
Priscilla Humay CPSA, CPX and  
Pat Lentine CPSA, CPX

**Questions? Call Hanneke Jevons**  
at (386) 447-4744.



## September 2024 Chapter Meeting

**Judy Madigan**, President, welcomed everyone to our first fall meeting after the summer break and introduced the Board members present. She also reminded everyone that it is time for membership renewal, both the chapter and CPSA. Judy emphasized that if you were a new member from May 1 forward, your dues cover you through 2025. But only if you were a new member, not a renewal.

The upcoming show was highlighted with everyone encouraged to enter by the deadline. The opening reception is October 6 and the show runs to November 9.

**Kathi Darby** encouraged everyone to join the Facebook page, which is just for members. It's a good way to share your work and give and get help.

**Mattea Truppe** gave an update on the 2025 Pencil Cruise. Thirty-five rooms have been booked with more available. Everyone is looking forward to the workshops by Pat Lentine and Bonnie Snowdon. She will pass on more information as it becomes available, especially on Facebook. This will be a great time to celebrate our 20th anniversary.

The program then started with **Hanneke Jevons** sharing about an interesting technique using a **laser printer to print on wood**. She reconnected with an old friend from her teaching days, Chris Pryor, who is a woodworker; his business is Pryorville Woodcraft in Bunnell, FL. Unfortunately, this technique cannot be used for Explore This! as it is considered a collaborative effort between artists. However, that does not preclude enjoying our own creativity. Hanneke showed a series of photos that demonstrates the process.



First, a photo of the bird was sent to Hugh.

She received back this wood etching.





The darker part of the etching has texture, so when using colored pencils including Derwent Inktense pencils, you get wonderful results. In Hanneke's finished piece, the brown background is the wood, the blue bird is Inktense, the other areas are a combination of pencils and gel pens and ink.

Here are some other examples where Hanneke is exploring and experimenting:



In the completed piece of eagles. the wings are the wood itself; the white is colored pencil; and a lot of Inktense was used as well.



Chris Pryor  
dr.chrispryor@gmail.com  
386-338-4485  
Bunnell, FL

Cost varies with type of wood and size.



**Pat Lentine** took over with her presentation on backgrounds which are accepted by Explore This! Colored pencil can often take a long time when used for backgrounds. Using pastels, for example, can greatly cut down on that time.



**PanPastels** are available in a complete 80 color set, or in groups or singles. Tools are also provided to pick up the pastel then apply to the paper. There are many tool tip shapes to suit your needs.

Pat also uses **NuPastels** (which are still available in sets, but individual sticks are difficult to find). NuPastels are stronger than soft pastels, breaking less easily. Pat is also experimenting with **Rembrandt Pastels** as a backup to NuPastels.

Pat also recommends pencils for details. She likes the **General's pastel pencils**. A good place to start.

Blending can be done with paper blending stumps, Cornel Style Stix (may be discontinued in the US), various blenders, kneaded eraser, pencils themselves, and even packing peanuts. Pat uses her fingers to blend much of the time; you can buy finger sleeves or cots to keep your hand clean.



Pat showed us a few projects highlighting the backgrounds.



**“Free Spirit”** has a blue and white pastel background; the red dress and rocks are colored pencil.

**“Spring Dance”** has the figure in colored pencil, but the entire background is pastel.



**“Raccoon”** has the raccoon and tree in colored pencil, but the background is pastel.

Pat then gave a demonstration on each of these mediums. A favorite paper is **Canson Mi Teintes** which comes in a variety of tones. Pat took her go-to PanPastel tool and applied blue and white PanPastel (top of paper). She showed how the colors blended to form, for example a cloud effect. She then applied **NuPastel** (middle of paper); Pat really loves how the NuPastel is more intense, blends well, and is vivid on the paper.

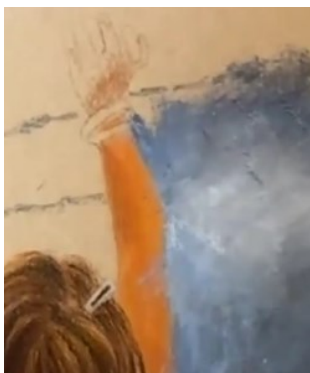


Pat took a workshop with **Christine Swann**, who follows the “power” of pastels, rather than categorizing by hard or soft. The lower power are the pencils, then next is NuPastel, then the Rembrandts. The soft pastels have more power. Pat applied a **Rembrandt** blue (bottom of paper) for the last comparison.

Pat explained how she approaches a figure. First, she puts about two layers of pencil on the figure. In this example, she is using U-Art paper (a sanded surface). Then she begins to apply the **PanPastel** background. And blending, with finger and pencil (using the side of a sharpened pencil).



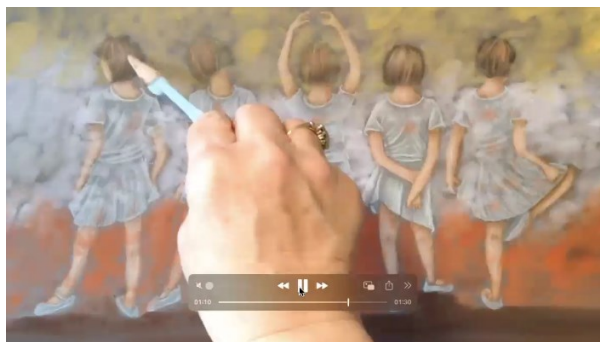
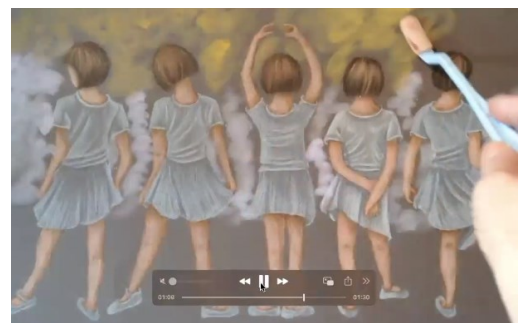
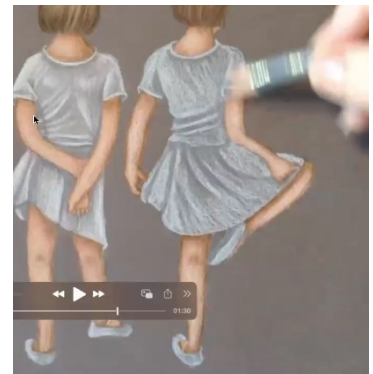
Some of the pastel went over the figure; however, using an eraser or other means, you can clean up the edges. But with only 2 layers, you can also easily add to the figure. If the background came first, the colored pencil might not adhere very well. Using a colored pencil, you can now come in close to the arm to add detail to the background edge. But, try to avoid a halo effect.



The **NuPastel** cannot come as close to the figure as with the PanPastels. Once applied, take a color match pencil to fill in around the figure. Then blend. Mind the dust! Handle carefully.

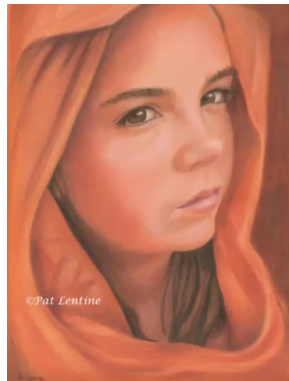


Pat shared a piece that won an award in Explore This! In "**Little Dancer**" the figures were all colored pencil. However, she put pastel over the top of the figures while keeping the main figure emphasized. The sequence below shows Pat applying the background.





Pat loves using **Caran d’Ache Neocolor II Aquarelle** (come in a crayon form) and **Caran d’Ache Museum Aquarelle** (pencil form). She will use them for accents and backgrounds. (Museum is more color-intense, but both are great products).



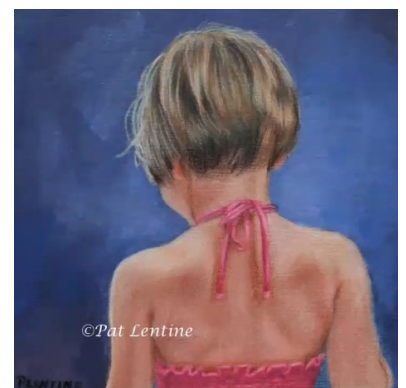
“**Thirteen**” is an example using **Caran d’Ache Neocolor II**; it was first entered into CPSA, but rules changed, and was subsequently accepted into CPX.



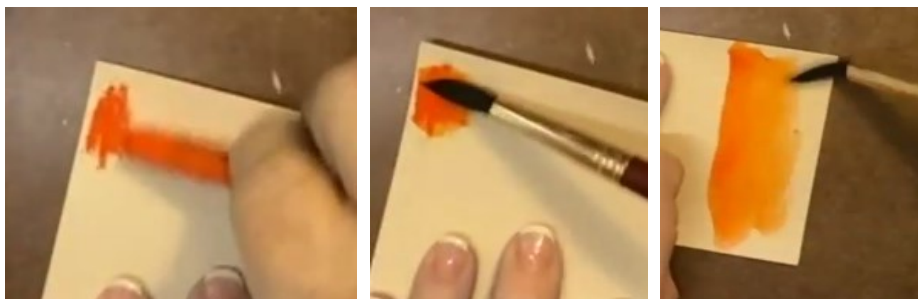
**Caran d’Ache Neocolor I** (non-watercolor) was applied over “**Winter’s Warm Glow**” to give a more intense effect and sparkle.



The “**Pink Ties**” background is **Caran d’Ache Neocolor II Aquarelle**.



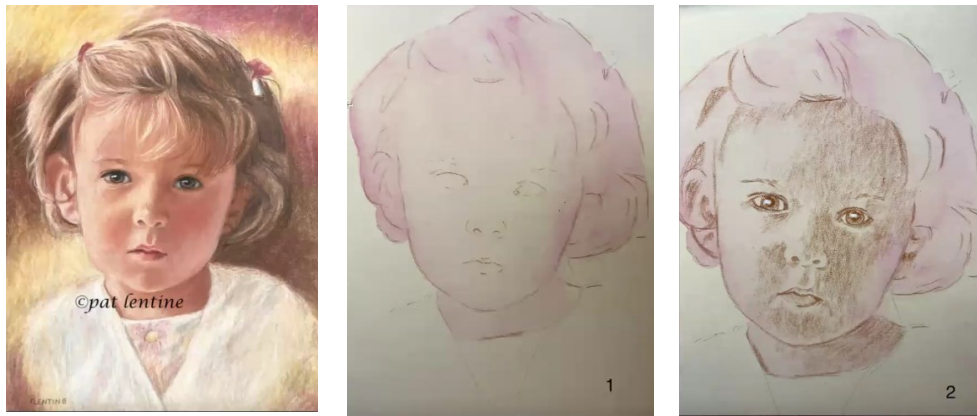
Pat demonstrated the use of the watercolor pencils. One way is to apply a spot of color on a surface, then pick up some of the color with a wet brush. Then base coat the piece, not struggling to fill in the tooth of the paper. (Used for “**Thirteen**”)



Another option is to apply one or two colors directly to the piece; then blend with a wet brush. (Used for “**Pink Ties**”)



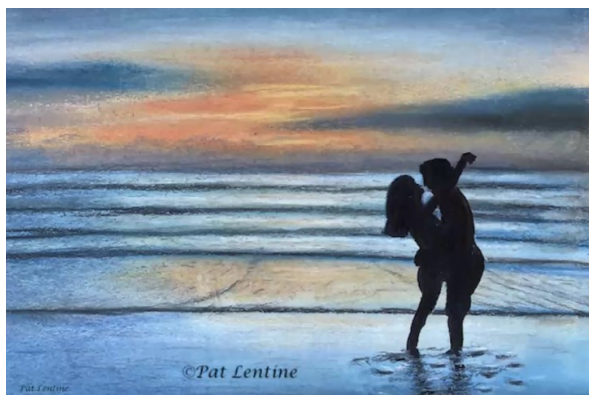
“**Penny**” is 100% colored pencil; however, Pat used **Caran d’Ache Museum Aquarelle** to base coat the face to fill in the tooth of the paper (which is acceptable for CPSA). Then the layers of colored pencil was added.



Pat used heat for “**Under the Sprinkler.**” To get the rain, she took a white pencil and stroked a wet liner brush over it. Then, taking much time, pulled the brush tip over the piece. If you are not concerned about a competition, you can also use some white acrylic paint.



Pat also experimented with pens and markers. She prefers **Pigma Micron** pens and the **Faber-Castell Pitt Artist** pen with a brush tip. The pens allow you to achieve greater detail. Pat shared “**Sunrise,**” pastel with ink, and “**Beach Dance,**” colored pencil with ink.





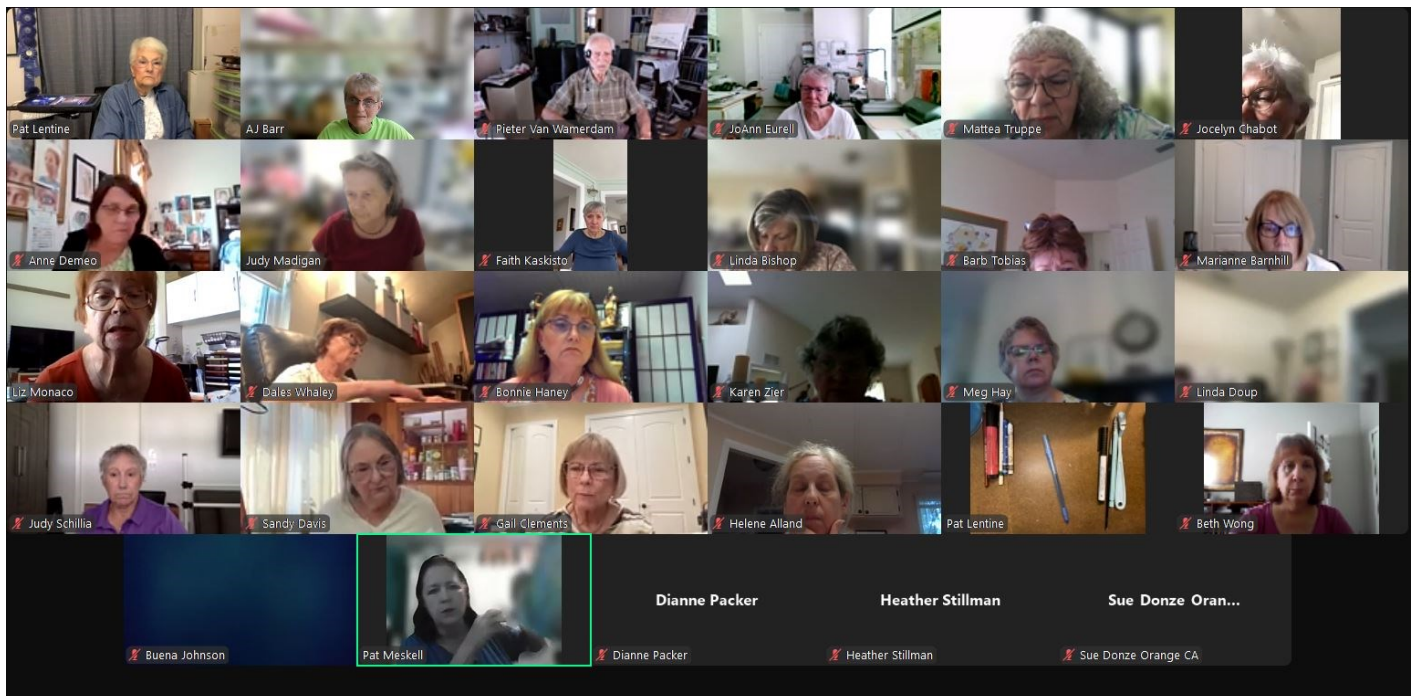
In "**Bella and Molly**," Pat put a red marker under the colored pencil on the shirt and face. However, she found that this method did not save her time, so she has stopped using it.

Pat has also used odorless turpentine in backgrounds as well, as seen in "**My New Umbrella**."

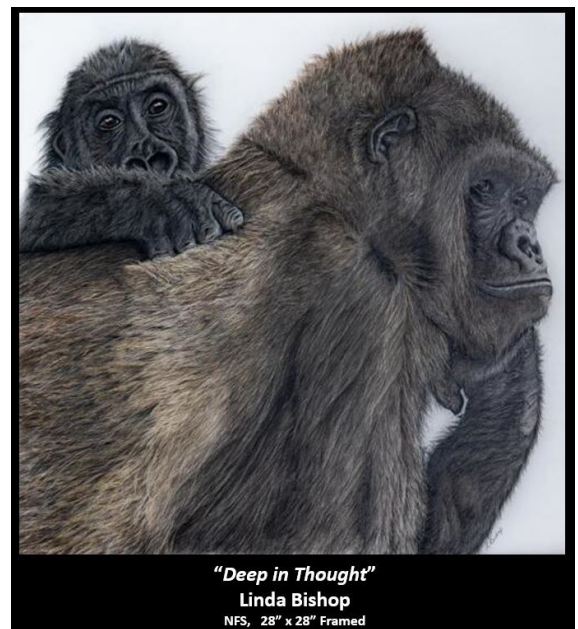


The meeting concluded with questions and suggestions by the participants, both on backgrounds and more! It was a great time of sharing.

**Thank you, to both Pat Lentine and Hanneke Jevons** for both of these presentations. Hanneke shared a new colored pencil technique that is so creative. Pat demonstrated very practical and useful methods to not only speed up our backgrounds, but to also sparked some creative thoughts for new projects. The audience expressed their interest in exploring both of these techniques!



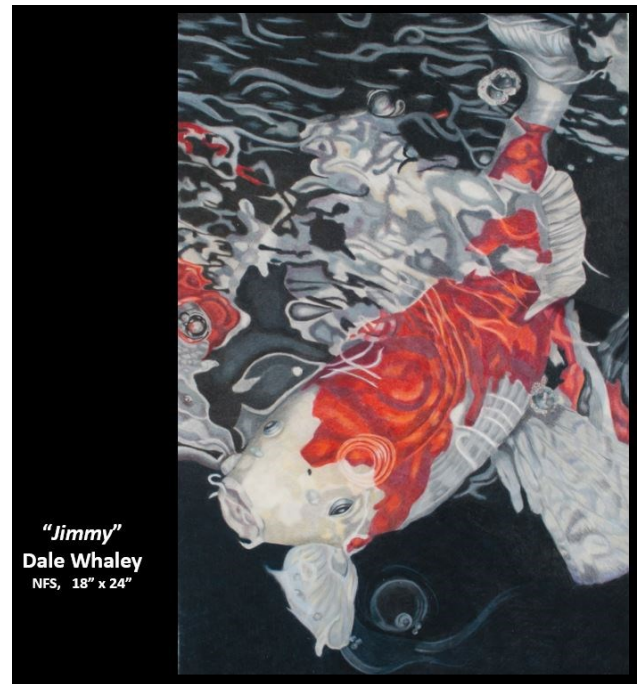
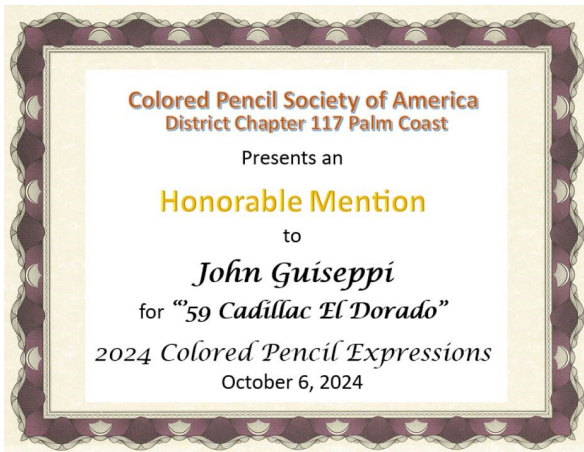
**Congratulations!**  
**“Colored Pencil Expressions”**  
**Award Winners**



**Congratulations!**  
**“Colored Pencil Expressions”**  
**Honorable Mentions**



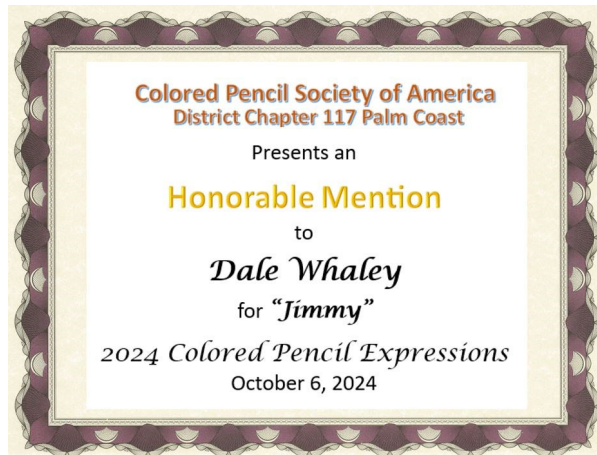
**“Rabbit Love”**  
**Faith Kaskisto**  
 NFS, 13” x 16”



**“Jimmy”**  
**Dale Whaley**  
 NFS, 18” x 24”



**“59 Cadillac El Dorado”**  
**John Guiseppi, CPUSA**  
 Colored pencil on Strathmore 400 Bristol Vellum  
 NFS, 21” x 14”

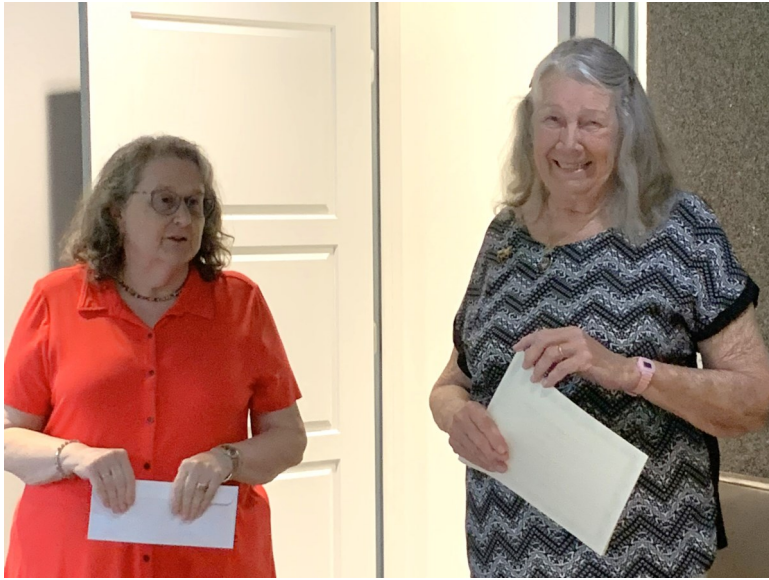


## Show Reception

Despite Hurricane Milton on its way, many of the local members and their guests dodged the raindrops and made it to the reception. We had a wonderful time celebrating the artistic achievements, complete with an awards ceremony. Here are a few photos.





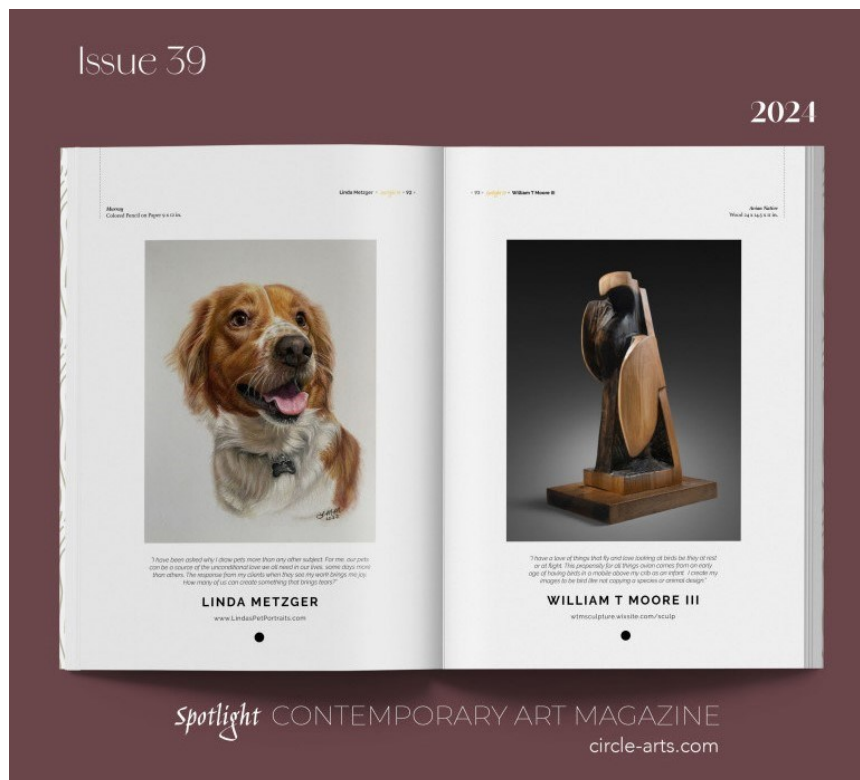




# “Murray” Earns Double Honors !!

## By Linda Metzger ~ Congratulations!

Besides Linda’s award in the CPSA117 2024 Show, “**Murray**” has been selected to be featured in the 39th issue of the **Spotlight Contemporary Art Magazine**, published in Lyon, France, and due out in November.



There are now 65 folks signed up! This is a *can't miss* cruise!  
Questions? Please reach out via email or directly with Go Travel.

# 2025 Colored Pencil Cruise On Celebrity Equinox



7 Day Eastern Caribbean Cruise Departing Port Canaveral on March 29, 2025 Returning April 5



## Itinerary

- Day 1 Saturday March 29 -Port Canaveral Depart: 3:30 PM
- Day 2 Sunday March 30 - At Sea
- Day 3 Monday March 31 - Puerto Plata, Dominican Republic
- Day 4 Tuesday April 1 - San Juan, Puerto Rico
- Day 5 Wednesday April 2 - Philipsburg, St Maarten
- Day 6 Thursday April 3 - At Sea
- Day 7 Friday April 4 - At Sea
- Day 8 Saturday April 5 - Arrive back at Port Canaveral

Classes, Seminars and Workshops offered during 3 days at sea

Guest instructors: Bonny Snowdon and Pat Lentine

Registration Link: [https://gotravelinc.formstack.com/forms/pencil\\_art\\_2025](https://gotravelinc.formstack.com/forms/pencil_art_2025)

For information Contact: Peter Kushner, (508)208-6136, [peterkushner@me.com](mailto:peterkushner@me.com)

Here is a clickable link from the flier for ALL the information:

[https://gotravelinc.formstack.com/forms/pencil\\_art\\_2025](https://gotravelinc.formstack.com/forms/pencil_art_2025)

## Classes Offered by Members

### Hanneke Jevons

**Open Studio** for colored pencil in my home on Wednesdays and Fridays from 2:00 to 4:00 PM. Space limited to 4 students. Please contact Hanneke at [han-noart@bellsouth.net](mailto:han-noart@bellsouth.net)

### Pat Lentine

**Colored Pencil and Pastel Artists - online Zoom classes:** Each student brings to class a project they want to start. Individual input on each project. Class limited to 10 students. Tuesdays 7:00 - 9:00 pm and Wednesdays 1:00 - 3:00 Eastern. Register at my website [www.patlentine.com/](http://www.patlentine.com/) or contact Pat at: [pat@patlentine.com](mailto:pat@patlentine.com) and 407-758-4437

**Mixed Media Painting & Drawing:** The Artists' Workshop of New Smyrna Beach, Mondays, 5:00 - 7:00 PM. This class is for students of all levels who want to improve their skills in colored pencil, pastel, acrylic, and watercolor. Pat will help you figure out how to start, make decisions, solve problems, and give finishing touches to your projects. Contact: [pat@patlentine.com](mailto:pat@patlentine.com) and 407-758-4437

### Priscilla Humay

Teaching at Ormond Memorial Art Museum ([ormondartmuseum.org](http://ormondartmuseum.org))

**Draw & Refresh in Colored Pencil:** Wednesday, November 13, 2024

"Explore color for your own personal expression and sharpen your drawing skills by developing techniques, from basic to refined (strokes, grisaille, layering, value, intensity, temperature, texture). The objective of the class is to answer your questions about the colored pencil medium and to develop skills that will enable you to understand color and its application.

### Kathie Miranda

**Scratchboard for Artists:** 3 Thursdays, 10/17, 10/24 & 10/31 via Zoom 10:00 am - 1:00 pm. Work on **black artist grade** scratch board panels or paper and a simple Xacto knife to gently scratch lines to reveal the white below. I'll show you how to create a full value range from 0% (black) to 100% (white) and how to add color to the drawing. \* Demos will be recorded for student reference after class \*



**Forest Finds: Neutrals in Watercolor:** 3 days, 11/12, 11/13 & 11/14 via Zoom 10 am - 1 pm. Forage for natural woodland objects in neutral colors such as mushrooms, dried plants, fruits and bark. Learn to mix primary colors to create vibrant neutrals that glow. \* Demos will be recorded for student reference after class \*

If you are offering instruction, please let us know so your information can be included in future issues.

## Our Board Members

CPSA-DC 117

### President:

Judy Madigan

### Vice President:

Pat Lentine

### Secretary:

Priscilla Humay

### Treasurer:

Kathi Darby

### Membership:

Linda Doup

### Newsletter/Website:

AJ Barr

### Historian:

Kathy Viehe

### Publicity:

Jo Ann Eurell

### President Emeritus:

Hanneke Jevons

## Membership Information

### Chapter Membership Benefits:

- Networking with other colored pencil artists
- Participation in sketch groups
- Member discount rate for local workshops
- Chapter newsletter
- Opportunities for exhibits and event participation

*A member of the local CPSA DC117 St. Augustine Chapter must also be a member of the Colored Pencil Society of America.*

### The benefits of CPSA membership are worth it:

- A national newsletter, To The Point, twice yearly.
- Product research, pigment identification, lightfast information
- Lower entry fee for annual CPSA exhibitions
- Lower rate for workshops at CPSA Convention
- International membership networking directory
- District Chapters for local and regional networking
- Free link to your website
- Ability to earn Signature status
- NOTE: Only CPSA members who have attained Signature Status may use the initials CPSA or CPX after their name.

CPSA remains firmly dedicated to the fundamental principles of inclusion and diversity, and to racial justice as an inalienable human right.

### Newsletter Contact Info:

For submissions and requests to be profiled, please contact either AJ or Linda.

**AJ** 386-283-2433

cpsa117palmcoast@gmail.com

**Linda** 386-295-0486

lindadoup@att.net



### MEMBERSHIP APPLICATION

New Membership       Renewal

Check if you have paid CPSA National

NAME: \_\_\_\_\_

ADDRESS: \_\_\_\_\_

CITY: \_\_\_\_\_ STATE: \_\_\_\_\_

ZIP CODE: \_\_\_\_\_

EMAIL: (Please print) \_\_\_\_\_

PHONE(s): \_\_\_\_\_ (Home) \_\_\_\_\_ (Cell)

- Annual chapter dues are **\$20**.
- Membership year runs from November 1st to October 31st.
- Applications for CPSA National can be obtained through the website: [www.cpsa.org](http://www.cpsa.org)

**GO TO THE WEBSITE [cpsa117.org/membership](http://cpsa117.org/membership) to complete the online form.**

**Then to the Store page to complete the payment. Thank you!**