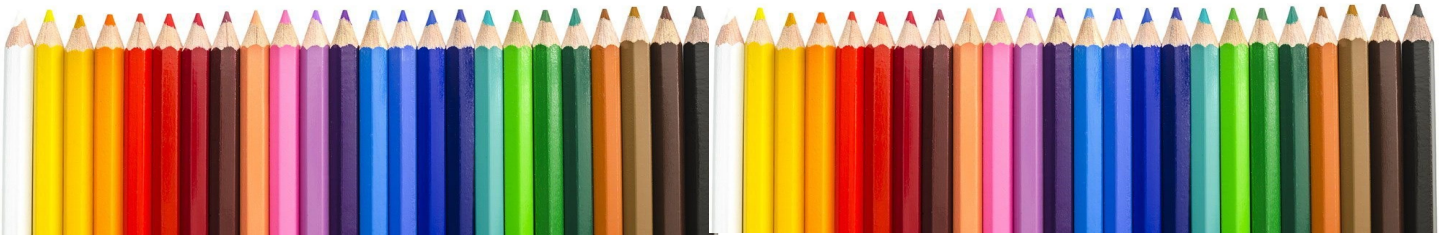


# Pressing the Point

February 2021

**CPSA**  
Colored Pencil Society of America

District Chapter 117 | St. Augustine FL



**CPSA-DC 117**  
**160 Cypress Point Pkwy**  
**Suite A208 (2<sup>nd</sup> floor)**  
(Flagler County Art League)  
**Palm Coast, FL 32164**

**We meet on the 3<sup>rd</sup> Sunday of each month at 1:00 PM**  
**(except July & August – no meetings).**

*Please check the website for any scheduling changes.*

**[www.cpsa117.org](http://www.cpsa117.org)**



## Colored Pencil on Wood

**Sunday, February 21, 2021, 1:00 PM**

This month, we will explore working with colored pencil on wood. Join us as Kathi Smith presents her techniques for using colored pencil on wooden Matryoshka dolls, also known as Nesting Dolls. If you would like to work along with Kathi, a supply list follows this post. The 2021 February Challenge will also be announced during the meeting.

A Zoom meeting link will be sent to all members before the event. Watch your email.

*Remember - the deadline for entering our CPSA DC 117 Members-Only virtual show in partnership with the Flagler County Art League is March 6, 2021. Go to [flaglercountyartleague.org](http://flaglercountyartleague.org) and look under "Call for Entries/Registration" to view the show prospectus. Follow the instructions in the prospectus for uploading your images.*



[Show Prospectus](#)

[Image Prep](#)

Tips on preparing your photo image for the show ~ PC and Mac

[Ft. Lauderdale Invitation](#)

[February Meeting](#)

[January Recap](#)

[Lee and Dex Show](#)

[Explore This! Thank You](#)

[Classes](#)

## Chapter Meeting

February will see us continue on with our pencil challenges. This month it is painting on wood, but not just any wood.

First, be sure to note the date and time ~ **Sunday, February 21 at 1:00 pm** via Zoom. Here's what we will be doing:

- ◆ **Kathi Smith** will be our presenter for painting on wood using **Matryoshka** nesting dolls (however, you may use other forms of wood if you prefer). This folk art form goes back to 1890; Matryoshka dolls are a traditional representation of the mother carrying a child within her and can be seen as representing of a chain of mothers carrying on the family legacy. The project will give us an appreciation of this important cultural art form. ([Click here](#) for the materials list). But it will also demonstrate the ability to apply colored pencil on a smooth wood surface, a technique that is a favorite of many pencil artists.
- ◆ **Hanneke Jevons** will be giving an update on the upcoming virtual Member show at FCAL in March.
- ◆ **Linda Doup** and **Pat Lentine** will be giving various updates on Chapter activities.
- ◆ Of course, please have at hand your work in progress that you would like to share.

***Looking forward to seeing everyone at the meeting!***

### ***Zoom Info:***

Remember, ***an email invitation will be sent to every member or guest with the link for the meeting.*** You will click on the link and then join in. Feel free to invite someone to attend with you ~ **all are welcome.**

To show your work, you can simply hold the piece up in front of your webcam. **OR**, you can email a photo of the piece to either **Pat Lentine** (pat42@me.com) or **AJ** (msajbarr@earthlink.net) and we will display them for you.

Problems joining that day? Pat (407) 758-4437. Linda (386) 295-0486. AJ (386) 283-2433.

## MATRYOSHKA DOLLS SUPPLY LIST

- 1 set of Matryoshka nesting dolls - mine is 5.75"
- 1 Clean dish towel or rag to hold doll while working on it
- 1 Graphite pencil
- 1 Micron permanent fine line marker 005 or 03 or equivalent
- 1 eraser - Tombow mono works well
- Workable spray fixative
- Spray varnish for finished piece

\*\*\* **Prismacolor pencils** \*\*\*

- PC 941 **LIGHT UMBER** ~ hair
- PC 943 **BURNT OCHRE**~ jumper
- PC916 **CANARY YELLOW** ~ flowers and dots
- PC 927 **LIGHT PEACH** ~ skin
- PC 1092 **NECTAR** ~ cheeks
- PC 1024 **BLUE SLATE** ~blouse
- PC 910 **TRUE GREEN** ~ leaves
- PC 195 **POMEGRANITE** ~ lips, tulip
- PC 1002 **YELLOWED ORANGE** ~ flower centers
- PC 935 **BLACK** ~ scarf, bees, base
- PC 938 **WHITE** ~ flowers, apron
- PC 925 **CRIMSON LAKE** ~ heart





## January

The January meeting opened with a big welcome to our visitors (**Diane Dumas**, **Mary Tougas**, and **Jane Stankowitz** from CPPG, **Judy Jacobs** DC-202, **Kathy McLean** DC-207, **Patricia Otto** DC-113), so great to have you back. **Pat Lentine** give some updates on Chapter activities, including details about the **Mark Menendez** workshop in July. Pat went on to discuss the monthly challenges in greater detail. **Hanneke Jevons** talked about the Member show in March.

**Pat** and **AJ** talked about prepping your photos for submission to the March member show. However, many thanks to **Bob Sena** and **John Guiseppi** for also contributing their extensive knowledge on processing photographs. It ended up being its own mini-presentation.

Thanks to **Helene Alland**, **Bob Sena**, **Kathy McLean**, **John Guiseppi**, and **Linda Bishop** for sharing their artwork.



For the program, and monthly challenge, **Kathi Darby** gave a demonstration on fur, using a dog and cat as the subjects.

Special attention was given to the fur (hair) direction, how it changes as you move about the head. Kathi started with the eye, moved to the nose, mouth, and whisker details. She also explained the use of a stylus to make impressed lines. Fur can be in strands or

clumps and go in different directions.

The following pictures show a bit of what was covered. Now, everyone is invited to do a small piece illustrating fur for the **monthly challenge**. Completing each challenge this year makes you eligible for a drawing for a prize (to be determined). But, more importantly, it will serve to strengthen your own skill set as you move forward with your colored pencil endeavors.



Cat portrait is by Kathi Darby

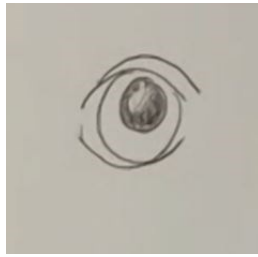
***Thank you, Kathi, for a fun and informative time.***



Dark fur



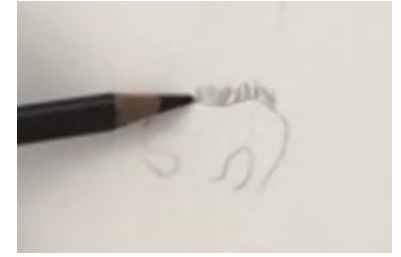
Light fur



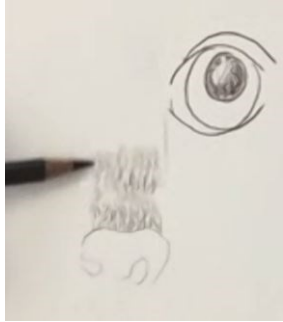
Start with eye



Dark fur



Start the snout



Go up the snout



Add clumps



Under eye



Muzzle



Nose—add color



Mouth



Under paint



Build color



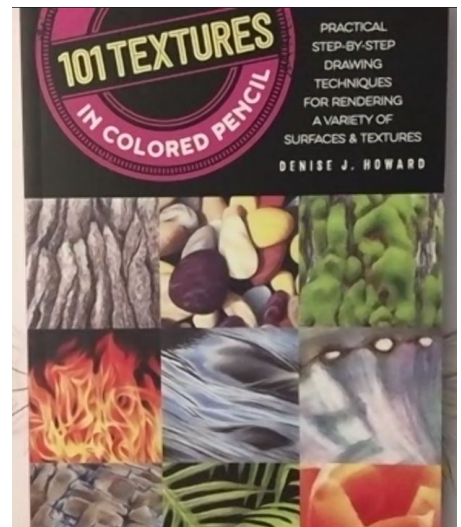
Parts in hair



Cat muzzle



Stylus tool



Recommended book







Helene Alland



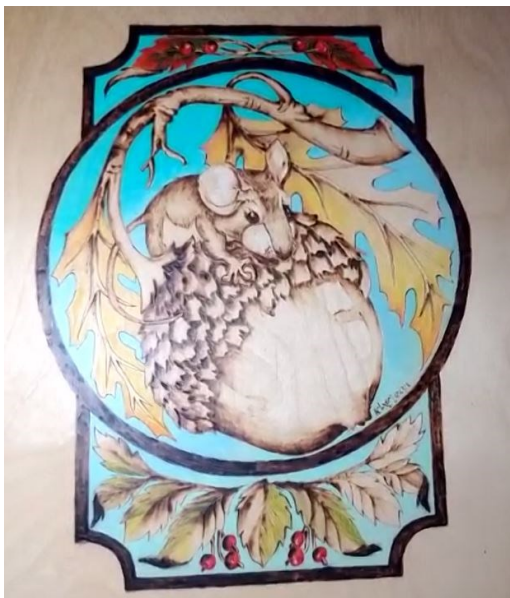
Bob Sena



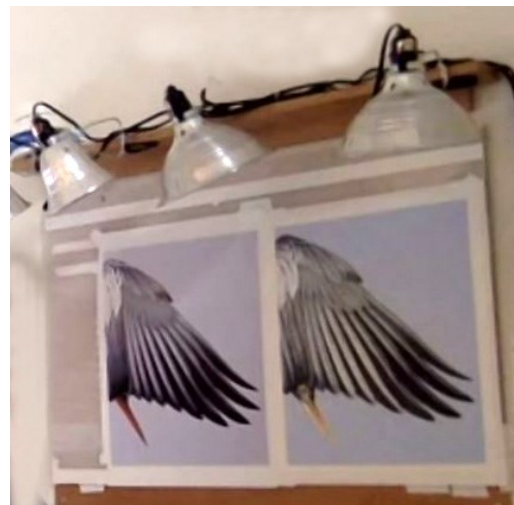
Linda Bishop



John Guiseppi



Kathy McLean



John's wing study

## Show

### Member Show Information ~ Prospectus

**Note:** Most important, make sure your photo submission is **5MB or less**. Less important is the longest side dimension. Also, try to have the best photo quality that you can. As this is a private show, we'll make sure that every entry looks its best.



#### Virtual Show Prospectus Colored Pencil Society of America District Chapter 117-St. Augustine - Member Show

#### Registration Guidelines:

1. Register online using FCAL's website [Flagler County Art League](#)
2. Registrations are not accepted after midnight on March 6, 2021.]
3. Entrant must be a member of the Colored Pencil Society of America District Chapter 117-St. Augustine.
4. Limit 4 entries per artist per show, no entry fees required for submission.
5. Information on the registration form cannot be changed after deadline except for the selling price status.

#### **PERMISSIONS:**

1. The entrant gives permission to FCAL to: (i) use images of the artist and his, her or their artwork for promotional purposes; and (ii) retain his, her or their contact information for future marketing and informational purposes. FCAL never shares entrant's contact information with any other entity.
2. If anyone other than the entrant will handle purchase inquiries, the entrant must notify FCAL with contact information for that designated person.

#### **SHOW GUIDELINES:**

1. This show is open to Colored Pencil Society of America District Chapter 117-St. Augustine Members Only.
2. CPSA DC 117 and FCAL reserve the right to refuse any submission not following established CPSA National guidelines for a show, or if considered to be inappropriate for all viewing audiences.
3. CPSA DC 117 Member show encourages new work. Work shown in previous shows may be submitted unless that work has won a prize in previous shows.
4. Entries must be original work created and conceived by the artist, untouched by instructors and not created in a class or workshop. No mass-produced work.
5. The show is judged by two categories, Advanced Artist (having won a prize previously) and Emerging Artist (never having won a prize). Awards will be given by category for 1st, 2nd, 3rd Place and 3 Honorable Mentions.

#### **DIGITAL IMAGE REQUIREMENTS:**

1. Digital images must be cropped to the edges of the artwork image. Remove the mat, frame, and background objects leaving only the art image.
2. For best results, the dimension of the longest side of the image should be 1500 to 2500 pixels. Lower pixel counts may be submitted, but if the quality is not good, the image could be rejected by FCAL.
3. The final file size must not exceed 5.0 MB.
4. The file name should represent the artist name and title with a .jpg file extension. (ArtistLastName FirstName Title.jpg)
5. Save the image as a standard JPEG or JPG file type.

#### **IMPORTANT DATES** (dates are firm):

1. Registration, including images, deadline is **March 6, 2021**.
2. Show Award Winners will be notified on or before **March 20, 2021**.



### CPSA-DC 117 Member Show March 2021 (FCAL)

#### Re-Sizing and Uploading a Photo for Entry

##### For a Mac (Apple) Computer

1. Open your photo in "Preview."
2. **Copy** – always keep your original photo and work on a duplicate:
  - Click "File" at top of screen, then click "Duplicate."
  - Close your original photo.
3. **Crop** your photo, if needed (no matting or framing should be in the photo):
  - The **Crop** tool is to the left on the tool bar. Click on "Rectangular Selection" and select area to be cropped with your mouse.
  - Click on the **Crop** tool in the tool bar (If the tool bar is not there, click "Tools" at the top and then "Rectangular Selection").
  - To find the right tool in the tool bar, hover over the icons and the name for that tool will appear.
4. **Size** your photo:
  - Tools adjust size or adjust size icon tool bar. Click
  - In the pop-up window:
  - Make sure the width and size are set on pixels and not inches.
  - The longest side needs to be between 1500 to 2500 pixels for best results.
  - Retype (overwrite) numbers in the appropriate fields if needed.
  - Scale proportionally, Keep the "Resample image" checked.
  - The file cannot be larger than 5 MB; if it is larger, try moving the quality bar to the left to reduce the file size.
  - Click ok
5. **Close** the photo:
  - When you close, select "Save As" – put in the title (see below). Save location – be sure you save where you can find it. It will also allow you to save as a JPEG format, if it is not already in that form.
  - To label the photo – "Save As" using Last name\_First name\_Title.jpg (Example: Lentine\_Pat\_White (your last name, underscore, your first name, underscore, title of artwork, .jpg)

##### For a PC with Windows

1. Open your photo in "Photo Viewer"
2. **Copy** – always keep your original safe, work from a copy. Click on the 3 dots in the top right-hand side, select "Copy," then paste in desired folder.
3. There is an Edit icon at the top. Open the menu. Click on "Edit" (there are other options that you would not use for this show).
4. **Crop** your photo, if needed (no matting or framing should be in the photo). Simply slide the edges where you want. "Save" or "Save a copy."
5. **Straighten** your photo if needed by sliding the "dot" on the straightening bar. "Save" or "Save a copy."
6. **Size** your photo: Return to main photo if you are still in the Edit mode.
  - On the main screen of the viewer, there are 3 dots on the top right-hand side – click to see a drop-down menu.
  - Select "Resize" – you will see the current size of the image. There are some preset sizes or select "Define custom dimensions."
  - Change one side, keep the "Maintain aspect ratio" checked on. The other side will adjust. You can also select the "Quality" which will also affect the image size. "Save." **Make sure the size is 5MB or less.**
7. **Close** the photo:
  - Click on the 3 dots, select "Save As" – put in the title for the show and save in your desired location.
  - Save as a JPEG format. |
  - Label as last name\_first name\_title.jpg (example: barr\_ai\_Deer at Dawn.jpg).



## Thanks

**Just to let you know our donations to CPSA are recognized and appreciated by our fellow artists. Linda**

**From:** Jeff George <jeff@jeffgeorgeart.com>

**Sent:** Sunday, January 24, 2021

**Subject:** Thank you

As one of the award winners of the recent Explore This! 17 Exhibition, I would like to thank the following district chapters for their contribution to the District Chapters Award for Excellence:

- Chapter 108- Memphis
- **Chapter 117- St. Augustine**
- Chapter 210- San Jose
- Chapter 217- Idaho Falls

I realize that the donations which finance the CPSA District Chapters Awards aren't from large corporations with deep pockets. They come from individuals who care. Most are artists themselves, or deep admirers of colored pencil art. Their generous support of the arts is not lost on me.

From this artist to you and your talented chapter members, I give a resounding and heartfelt THANK YOU!

Sincerely, Jeff George, CPSA, CPX



### The 2021 Explore This! 17 exhibition is now open

January 4, 2021

Which **61 artists** had their work selected for the 2021 Explore This! 17 online exhibition? Which **13 artists** received awards? Our juror, Matt Distel, has made his picks.

But instead of waiting until February 1 to open the show, we're pleased to announce that it's open online now! And just like the last three Explore This! exhibitions, the entire 2021 show will remain viewable on the CPSA website indefinitely.



**Congratulations to all the artists and award winners.**

[See the Explore This! 17 exhibition](#)

[See the award winners](#)

Enjoy! Wishing you and yours a safe, healthy, and prosperous 2021.

Best regards,

A handwritten signature in black ink, appearing to read 'Anda'.

Anda Chance, CPSA, CPX  
Exhibitions Director  
Colored Pencil Society of America

**Lee-Dex**

Our fellow chapter member, **Lee Richards**, is having a show along with another fellow artist and friend to many of us, **Dex Westphal**. Please show your support with your visit. As with Hanneke's show, Grand Living is a very safely run venue so drop by and see these fascinating works of art.



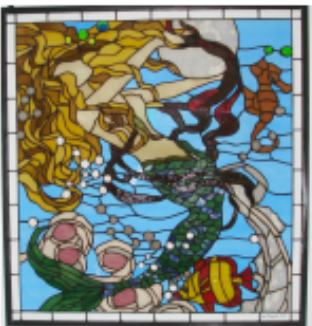
Iguana on a Branch, Stained Glass



Birds of a Feather, Stained Glass



Eagle at the Falls, Stained Glass



Oceanna, Stained Glass



Frolicking Dolphins, Stained Glass

**Grand Gallery  
of  
Palm Coast Arts Foundation  
Presents  
Singing Colors**

Featuring selected artworks by

**Lee Richards**

Award-winning Stained Glass Artist and  
GAF Artist of the Year, 2020

&

**Dex Westphal**

Award-winning Abstract Acrylic Artist and  
GAF Artist of the Year Nominee, 2018

**March 7 - April 17, 2021**  
Monday-Saturday: 9am to 5pm  
Located at Grand Living Realty  
2298 Colbert Lane, Palm Coast

**Opening Reception**  
**March 7 from 1-3 pm**  
Masks Required  
Social Distancing

For purchasing information contact  
Jan Jackson, Curator at  
jjpastel@aol.com  
or 505-688-3190



River Walk, 36"x 48" Acrylic



Dancing Brush, 20"x 20" Acrylic



Carlotta's Dream, 24"x 24" Acrylic



Blue Moon, 36"x 48" Acrylic





## 2021 CPSA Convention Cancelled

February 13, 2021

Well, here we are, 10 months later, yet still in the same place we were in last April. Once again, with even *greater* disappointment, the CPSA national governing board regrets to announce that we are **cancelling the 2021 CPSA convention**, scheduled for July 28–31 in Cincinnati, Ohio, for these reasons:

- While the vaccine roll-out is finally underway, and Dr. Fauci and other medical experts have expressed optimism that we can have 75–80% of the population vaccinated by “summer,” it is unlikely that everyone will have been vaccinated by then.
- New and possibly more virulent strains of the virus are now appearing in the U.S.
- The airlines are doing their part to make flying safer, but not everyone will be willing to travel.
- Once at the hotel we would all need to stay masked and socially distanced in common areas, making the convention experience far less than enjoyable.
- Finally, we also know that many of you continue to bear the personal financial burden of a crippled U.S. economy.

Considering all those factors, as well the financial penalties CPSA would incur if we wait any longer to decide, we realized that cancelling the convention was the only safe and sensible course of action.

Therefore, the exhibition will once again be held online on the CPSA website. The entry deadline, as it was last year, is now extended to **May 31, 2021**. The prospectus has been updated with the new dates and information for the online format.

### [Updated International Exhibition prospectus](#)

We know you are as disappointed as we are that we can't be together, but we also know that, once again, you will understand.

I do think we shall see each other again in the summer of 2022 in the Tampa Bay area of Florida, and that reunion will be all the more enjoyable for our time spent apart. In the meantime, please continue to stay safe and well!

Sincerely,

Deborah Maklowski, CPSA, CPX  
President  
Colored Pencil Society of America



## Ft. Lauderdale Invitation

### A message from Linda:

“Good Morning everyone,

I received a message from the Ft Lauderdale Chapter inviting our Chapter to participate in their up-coming Chapter meeting. Looks like a great meeting. The ZOOM link is in the email, so save the date.”

*“Our chapter DC 116 - Ft. Lauderdale would like to invite you and your members to join us for the following online meeting to be held on **February 27th at 2:00 pm:***

*Title of the CPSA DC 116 - Ft. Lauderdale meeting is "**Where Do I Begin?**"*

*Please join Florida District Chapter 116 (Ft. Lauderdale) as CPSA Signature artist Anita Orsini helps us jumpstart our artwork. Anita has been working as a professional artist for over 40 years. Please click the following link to see her bio on her website [Anita Orsini](#)*

### **Description of content of the mini workshop with Anita Orsini:**

*We have all had the experience of sitting in front of a blank piece of paper and not knowing where to start. I hope to give you some ideas that will help you look at the process in a different way and add new life to your work. This will include discussions on how to find and work with reference material, how to break away and find your own style, and how we can stand on the shoulders of giants and address the weaknesses that hold us back.”*

**Topic: Where do I begin? CPSA 116**

**Time: Feb 27, 2021 02:00 PM Eastern Time (US and Canada)**

**Join Zoom Meeting**

**[Join our Cloud HD Video Meeting](#)**

**Meeting ID: 850 7519 9827**

**Passcode: 249553**

**This will be a wonderful opportunity to get to know our fellow CPSA members from around the state. Here's hoping everyone will join in.**

## Classes Offered by Members

### Pat Lentine

**Colored Pencil and Pastel Artists.....** If you are would like some input on your projects please join us in our On-line Zoom class.

Each student brings to class a project or projects they want to start or have started or have finished. Individual input on each project with each student. You can then work on the project and get more suggestions as we go along. Students benefit from discussion of their own pieces as well as discussion on other students projects.

Class limited to 10 students.

Wednesdays - 1:00 - 3:00, Class fee \$10.00 per session.

You can sign up each week via my website using this link

<https://www.patlentine.com/on-line-classes-1>

If you have never done a zoom class or have any other questions, please contact. [pat@patlentine.com](mailto:pat@patlentine.com) and 407-758-4437

### Kathi Darby ~ Flagler County Art League

**Colored Pencil Series:** weekly, Monday afternoons, 1:30 to 4:00 pm  
\$40 members, \$60 future members (FCAL)

### Liz Monaco ~ Flagler County Art League

**Beginning Drawing Series:** Jan 21 thru Feb 25 (Thurs), 9:30 to 11:30 am  
\$120 members, \$180 future members

**Pet Portraits Series:** Feb 4 thru Feb 25 (Thurs), 1:30 to 3:30 pm  
\$80 members, \$120 future members

**Intermediate Drawing Series:** Mar 4 thru Mar 25 (Thurs), 1:30 to 3:30 pm  
\$80 members, \$120 future members

If you are offering instruction, please let us know so your information can be included in future issues.

## Our Board Members

CPSA-DC 117

**President:**

Linda Doup

**Vice President:**

Pat Lentine

**Secretary:**

Kathy Viehe

**Treasurer:**

Judy Madigan

**Membership:**

Kathi Darby

**Newsletter/Website:**

AJ Barr

**Historian:**

Kathy Viehe

**Publicity:**

Jo Ann Eurell

**President Emeritus:**

Hanneke Jevons

**President Emeritus:**

Bill Shoemaker

## Membership Information

**Chapter Membership Benefits:**

- Networking with other colored pencil artists
- Participation in sketch groups
- Member discount rate for local workshops
- Chapter newsletter
- Opportunities for exhibits and event participation

*A member of the local CPSA DC117 St. Augustine Chapter must also be a member of the Colored Pencil Society of America.*

**The benefits of CPSA membership are worth it:**

- A national newsletter, To The Point, twice yearly.
- Product research, pigment identification, lightfast information
- Lower entry fee for annual CPSA exhibitions
- Lower rate for workshops at CPSA Convention
- International membership networking directory
- District Chapters for local and regional networking
- Free link to your website
- Ability to earn Signature status
- NOTE: Only CPSA members who have attained Signature Status may use the initials CPSA or CPX after their name.

CPSA remains firmly dedicated to the fundamental principles of inclusion and diversity, and to racial justice as an inalienable human right.

**Newsletter Contact Info:**

For submissions and requests to be profiled, please contact either AJ or Linda.

**AJ** 386-283-2433  
msajbarr@earthlink.net

**Linda** 386-295-0486  
lindadoup@att.net

### MEMBERSHIP APPLICATION DISTRICT CHAPTER 117 – ST. AUGUSTINE

New Member    or     Renewal

Check if you have paid your CPSA National dues

NAME: \_\_\_\_\_

ADDRESS: \_\_\_\_\_

CITY: \_\_\_\_\_

STATE: \_\_\_\_\_ ZIP CODE: \_\_\_\_\_

EMAIL: \_\_\_\_\_

PHONES(S): \_\_\_\_\_

Annual chapter dues are **\$20**. The membership year runs from November 1<sup>st</sup> to October 31<sup>st</sup>.

Checks made out to: **CPSA-DC117 St. Augustine**

Mail to: Kathi Darby  
13 Bleau Court  
Palm Coast, FL 32137