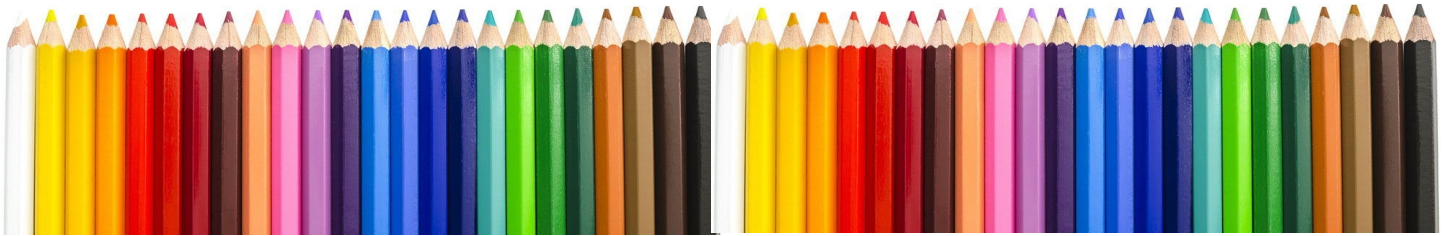


Pressing the Point

June 2022

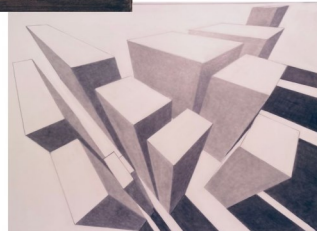
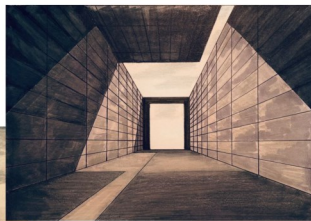
CPSA
Colored Pencil Society of America

District Chapter 117 | St. Augustine FL



We meet on the 3rd Sunday of each month at 1:00 PM (except July & August).
Please check the website for any scheduling changes. www.cpsa117.org

CPSA
Colored Pencil Society of America
District Chapter 117 | St. Augustine FL



Perspective Made Easy

Bonnie Haney

**1:00 PM EST, Sunday, June 19, 2022
on Zoom**

Bonnie Haney will discuss perspective and the differences between one-, two-, and three-point perspective. She will also present how and why to use the different choices in perspectives in your drawings. Bonnie will go over some tricky situations that you might not expect, and also stupid mistakes we talented artists would never do! You might want to have paper and a writing instrument handy to take notes. No other supplies are needed for this session.

If you have perspective questions on your own work that you would like to have answered, Bonnie will be happy to take a look at your piece. Since perspective is difficult to see on a screen and then correct, she has found the best way to view the perspective is from a picture sent to her. If you could take a good photograph of your drawing, put your name and email on it, and email it to her at blh@rochester.rr.com before the meeting, she will give you some assistance. It would also help to have the reference picture(s) that you are working from.

Members will receive an email with the Zoom link prior to the meeting. If you are not a member of CPSA DC 117 and would like to join us for our meeting, please email cpa117staug@gmail.com so we can send you an invitation for the meeting. Deadline for registering is Saturday, June 18th. Non-members are allowed to attend up to three meetings before becoming a member of our chapter.

Mark Menendez Update!

Jun 3 from **Cathy**: “Mark was transitioned out of ICU and into the Transplant Rehab wing. He has a very quiet and private room with a water view.

Pray for the work left for him to recover enough to go home soon. Also this week he made a trip outdoors ... his first fresh air since Jan 29th. Praise God for simple pleasures.”

Visit his website to keep informed and send a get-well message (www.menendezartstudio.com/)

OR if you would like to send a card, please send a request via email and we will provide his address.

“I take the cards to the hospital for Mark to read there. Brightens his day to see all the warm and caring wishes.”

Please click the links or just scroll through the newsletter to see all the news!

[Renewal Info](#)

[We Need You!](#)

[June Meeting](#)

[May Recap](#)

[Member Achievements](#)

[CPSA National](#)

[Classes](#)

Chapter Meeting

June ~ Keep cool ~ and creative!

Well, the heat has set in around the country. This is the season to lounge by the pool or go to the ocean or hike by a mountain stream. Perhaps you will be traveling to wonderful places and gathering some great reference photos!

- ♦ **Program ~ Bonnie Haney** will be giving a demonstration on “**Perspective.**” Bonnie is a well known and highly regarded drawing and colored pencil instructor residing in the Rochester, NY area. Although primarily a demo, have a pencil ready for a quick study and to take notes.
- ♦ **Challenge Update** ~ The current challenge, due by the June meeting, is “**Black Paper,**” and all the entries received thus far will be shared during the meeting. The new challenge will be announced. Two prizes will be awarded, one by a drawing and one by a judge. Please note, although everyone is invited to participate, only **members** are eligible to win the awards.

Entries will be posted on the website [cpsa117.org/Challenge 2022/](https://cpsa117.org/Challenge%202022/). Submit entries to cpsa117staug@gmail.com.

- **2022 Member Exhibit** ~ For details about the August 2022 Member Exhibit ~ [click here](#). This will be both an in-gallery and online exhibit for all members regardless of location.
- ♦ **Convention** ~ There will be a follow up to see if there are any problems in getting registered for the July 2022 CPSA National Convention in Tampa, Florida, or if you need a ride. **Remember ~ no meetings in July and August** ~ but we will be in touch.

We look forward to seeing everyone soon ~ or in Tampa!!

Challenge Note: **Everyone** is invited to submit a photo of your work. The one rule is that your submission must have been done during and/or after the announcement (no prior work). Completing each challenge this year makes all **members** eligible for one of two prizes (gift cards) by either a drawing or by a judge. But, more importantly, it will serve to strengthen your own skill set as you move forward with your colored pencil endeavors.

Zoom Info:

Remember, ***an email invitation will be sent to every member or guest with the link for the meeting.*** You will click on the link and then join in. Feel free to invite someone to attend with you ~ **all are welcome.**

To show your work, you can simply hold the piece up in front of your webcam. **OR,** you can email a photo of the piece to **AJ** (cpsa117staug@gmail.com) and we will display them for you. Problems joining that day? AJ (386) 283-2433.

Announcing the 2022 CPSA-DC 117 Member Show
Opening August 7 through September 17

1) Important Dates

- **Registration CLOSES JULY 24 (for all submissions regardless if the pieces are going to be displayed at the gallery or online).** Note, we must keep this deadline due to the CPSA National convention and our travel dates.
- **Gallery drop off Wednesday, August 3** (hours TBD)
- **Opening reception Sunday, August 7, 1:00 - 3:30 PM** (address below).
- **Gallery pick up September 18** (hours TBD).

2) Display Note

To ensure that all our members, regardless of location, will have their pieces displayed, the show will be both at the gallery **AND** online. Also, all pieces will be shown on a monitor at the gallery itself.

3) How to Register

- Very simple - just respond to this email - cpsa117staug@gmail.com
- Limit - 2 entries per member.
- Photo - 5 MB or less, do not include the framing if any.
- For all photos, include the title and the sale price or NFS.
- If you are local to Palm Coast, also include the framed dimensions **AND**, if you submit two, which one has priority to be shown at the gallery (as space is limited).

4) Prospectus Info

- Artwork must have been completed within the last 5 years.
- You may follow either the CPSA International **or** Explore This standards.
- In either case, the artwork must be solely the original concept, design, and execution of the submitting artist.
- **International:** Media must be 100% colored pencil on a manufacturer prepared surface (scratchboard not allowed). You may use solvents. Artwork must be 2-dimensional. Artwork may not be produced by applying colored pencil over a printed or digitally produced image.
- **Explore This:** Entries must be predominantly colored pencil and include one or more of the following: ink, watercolor, pastel, acrylics, etc. Can be a collage. Can be on an artist-prepared surface or a 3-dimensional surface. And any other technique, surface, or element that is **NOT** allowed for the CPSA International Exhibition.

5) Gallery Requirements

- Drop off your piece(s) on **Wednesday, August 3** (hours will be announced).
- **Framing** - you do not have to follow the CPSA standards, however, it is always better to keep framing simple in design (not ornate, 3-D, or painted).
- Artwork must be ready to hang by **wire** — no saw tooth hangers. No “clip on” frames.
- Outside frame **dimensions** may not exceed 32 x 40 inches (in either orientation).
- You may use **mats** of your choice; however, artwork usually shows best with neutral colors (shades of white, off-white, beige, gray, or black).

6) Gallery Address

Expressions Art Gallery

Located in the Grand Living Realty building
2298 Colbert Lane
Palm Coast, FL 32137

May Meeting Recap

Linda Doup, President, welcomed everyone and introduced the Board members. There was a great group of attendees eagerly anticipating Pat's presentation. Linda again discussed the upcoming CPSA National Convention and Exhibition, to take place the last week of July. The convention is being held in Tampa, Florida. While this is an opportunity for those in Florida to attend, **everyone** is encouraged to attend. It would be so great to get as many as possible from across the country to be together.

Pat Lentine, Vice President, gave a reminder about the current Challenge, an original composition on "**Black Paper**," due by the June meeting. As previously noted, this builds on Kathie Miranda's presentation on flowers on black paper. At year end, there will be two awards; one a drawing from entrants, and one from judging.

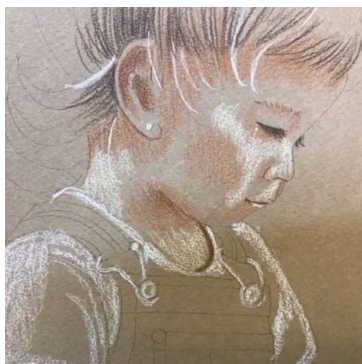
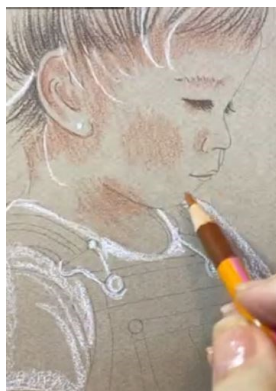
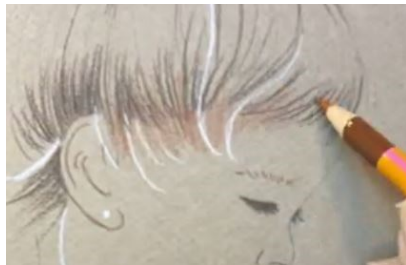
A reminder was given about the **member's exhibition** in August, here in Palm Coast, Florida. However, remote member work will also be shown on a display as well as on the website. There was also a reminder that registration will begin in June with more details to come. There was also a wonderful "reveal" ~ an entry by **Kathy Viehe** has been chosen to be in the Exhibition!

AJ Barr again made an appeal to have members participate in both programs and the newsletter. With such a large membership, there is much talent to be shared and enjoyed. Thank you **Sharon Shailer** for being the first volunteer!

Pat Lentine then gave a fascinating presentation on "**Skin Tones.**" a drafting film, for our pencil work. Pat is an award-winning artist with a portrait specialty. Few artists have mastered the depths and intricacies of portraying realistic skin. Lucky for us, Pat is one of those few. She prefers Canson Mi-Tientes tinted paper with Sand and Moonstone being favorites. Pat has also started using UArts 800-grit sanded paper, which can also take water. She is not a fan of strictly white paper, as it's easier to find the medium value on tinted paper. Pat primarily uses Prismacolor pencils (blendability), but will also incorporate some Polychromos. On the following pages, a simple tip list is given with photos. Please reference the recording sent to all members for much more detail.

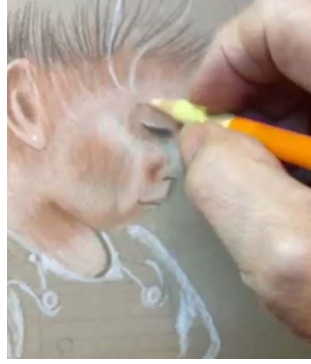
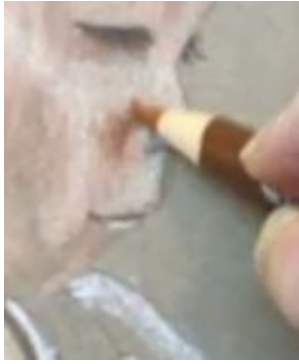
Thank you, Pat Lentine, for a professional level exploration of such a complex artistic challenge and for your boundless generosity.

Skin Tones



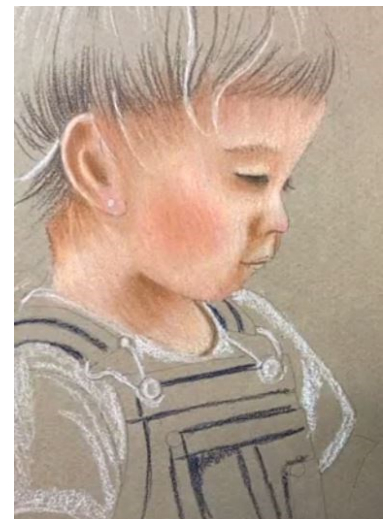
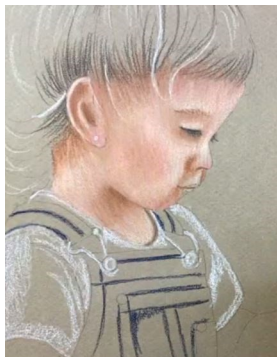
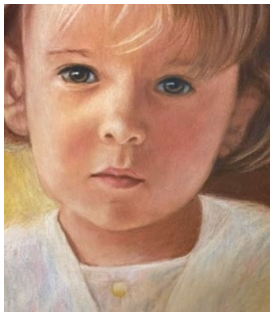
- Demo on paper ~ start with the shadows.
- **Burnt Ochre** for medium dark shadows.
- Then highlights with **Light Peach, White, and Cream.**
- Add **Chocolate** for darks, with **Burnt Ochre** over the Chocolate.
- Mediums use **Peach** over highlights and shadows..
- Now on the actual portrait, start with shadows using **Chocolate** (avoid the upper lip if possible).
- Highlights with **Cream**, keep the edges soft.
- Leave space for medium values.
- **Peach** over all; repeat 2 or 3 times.

Skin Tones



- Work the nose with darks.
- **Peach** again.
- Rework the darks.
- Highlights again.
- Sample ~ **Yellow Ochre** with **Pink** glaze.
- **Yellow Ochre** as glaze will liven up the skin tones.
- More **Pink**.
- Compare to the rest of the picture (clothes, etc.), helps to know how dark to make the skin tones.
- Continue to build up.
- **Carmine** or **Pale Vermillion** to brighten the cheeks. Also the chin, ear lobe, nose. Add **Pink**.
- More **Pink**
- Then **Peach**

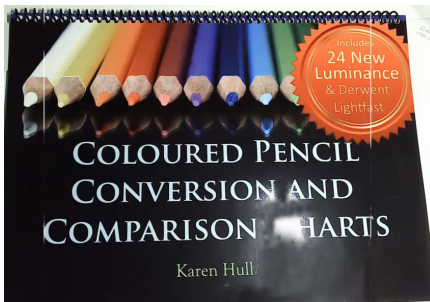
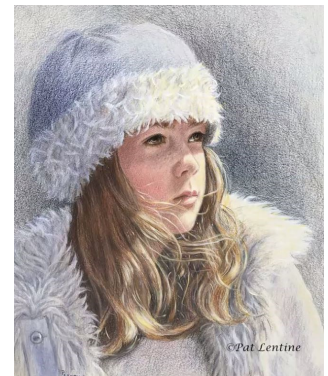
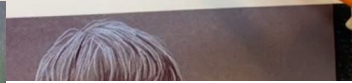
Skin Tones



- Work the highlights again with **Cream**.
- Work until smooth.
- **Terra Cotta** over dark areas/shadow (ears, nose, eyes).
- Add a **Blue** tint for reflection from clothes on chin, eye, hair line. Can also use **Lavender**, **Rosy Beige**, or **Clay Rose**.
- Sample ~ **Nectar** on the right side makes it a cooler value, less warm than Peach.
- Can use Polychromos **Beige Red** (Light Flesh) instead of Peach.
- Blend with stiff bristle brush (avoids wax build up with colorless blender).
- Royal Brush Clear Choice stencil brushes trimmed down for blending.
- Blended and worked over several times.
- Almost there.
- Final (for demo).

Skin Tones

From Photo to Portrait



- Pat's process - from photo to value study to original finished piece.
- 3 examples of Pat's skin tones.
- Use of **White** in portrait.
- **Dove White** pencils # 455 & 465.
- Color Comparison Chart book by Karen Hull (shared by **Liz Monaco**).
- Pat's pencil stubs! She uses MacDonald's straws as double ended pencil extenders.
- Group Zoom photo!



Skin Tones - Pat's Instructional Handout - Page 1

At this time, these are **my** basic colors and procedure (except on black paper, then under coat with White).

Be sure to keep all of your edges soft.

1. Shade the flesh with Burnt Ochre (Medium Dark Value).
2. Lights with either Cream, Light Peach or White – depending on the skin tone.
3. Darkest Shadows with Chocolate or Dark Brown (Dark Value).
4. Burnt Ochre – Glaze over the Chocolate or Dark Brown to keep from getting a muddy color when adding the next value, Peach.
5. Peach – Wash over all of the flesh including the darks and lights. (Medium value).
6. Repeat above several times – depending on your pressure
7. Start to add color:
 - Yellow Ochre, then Pink - **Glaze** over all of the flesh.
 - Pink – Place in the blush areas (cheeks, chin, bottom of the nose, earlobes, touch here and there in the rest of the flesh)
8. Repeat the first 7 steps as needed. Steps 3 & 7 will not need to be repeated as many times.
9. Carmine Red or Pale Vermillion – Brighten the cheeks, chin, nose, and ears.
10. Place in the highlights – I usually use White and then glaze over the White with the Cream or Light Peach.

Now, you will want to get your darkest darks on the paper, such as the darks in the hair or the clothes or the background. This will help you determine the skin tone values.

Then:

Repeat any of the above steps as needed. These are the basic steps that I use. I have tried other colors, but always seem to go back to these to start with.

Other colors that I use after the above steps and or during the first steps depending on the skin tone that I see in my reference photo.

Skin Tones - Pat's Instructional Handout - Page 2

Terra Cotta – Add to the shadows. You can use Dark Umber but be sure it is used sparingly. I have added Indigo to a very dark flesh area. This is sandwiched between the browns.

Tints – When adding tints, look to match the value of the area in which you are placing these tints.

For some of the cooler areas and the reflective lights, Blue Lake or any blue in the value, Lavender, Rosy Beige, Clay Rose, Nectar (a cooler medium flesh than Peach), Deco Pink.

For some of the warmer areas – Pumpkin Orange, Cream, Jasmine.

Will need to use colors from environment for tints as well. Such as clothing, sky, grass, etc.

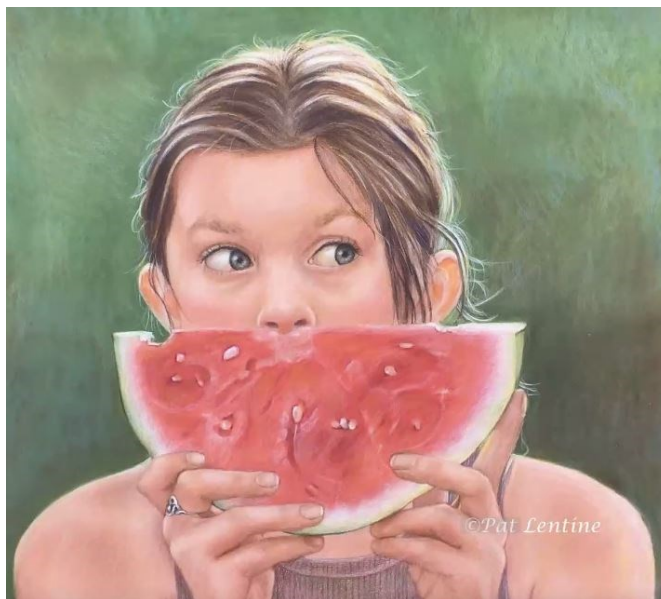
Can use other colors from your palette if seen in the photo. Just think – value and temperature.

Keep in mind – The lightest value on the shadow side of the face should be darker than the darkest value on the light side of the face.

Sometimes will use Faber-Castell Polychromos on top to blend – Medium Flesh, Dark Flesh, Terra Cotta, Pinks, Caput Mortuum, Light Flesh (Light Flesh is a great blender).

Lips – Use skin tone colors.

Brush – Reapply any colors as needed. I also blend with the Icarus board.



Member Achievements

Congratulations, Kathy Viehe!

We are so proud to announce that **Kathy Viehe** has been accepted into the CPSA International Exhibition for 2022.

Kathy has taken a serious interest in the subtraction method, and in April 2021 did a presentation for the Chapter on this technique. You may recall that she previously took an award for “**Bosley’s Bliss**” at our 2021 Member Show at FCAL.

Looking at “**Tour de Force II**”, one can see what must have captured the attention of the exhibition judge. A serene cyclist juxtaposed against a dynamic, swirling, energetic background fully engages the viewer.

Kathy’s piece will be displayed at both Exhibition venues, so many of us will have the good fortune to see this work of art in person.

“Tour de Force II” by Kathy Viehe



Have you received an award or recognition or were featured in an art exhibition? Please let us know! We want to share your good news. **Your achievements are an inspiration for others!**



Whose art did the juror select?

May 1, 2022

The list of artwork juried into the 30th Annual CPSA International Exhibition is now available. Congratulations to all the artists and thanks to everyone who entered this year!

[View the list of invited artists and artwork](#)

Selected artists will receive an email with shipping instructions soon.

This year our exhibition will be in two different Florida galleries. The first is the **Dunedin Fine Art Center** (July 11 to August 13). The exhibition then travels to the **Ormond Memorial Art Museum and Gardens** in Ormond Beach (September 1 to November 15).

Our convention is back!

We'll be at the beautiful **Safety Harbor Resort and Spa** on Tampa Bay from **July 27–30**. Our two workshop leaders are **Amy Lindenberger, CPSA, CPX**, and **Denise Howard, CPSA, CPX**. Convention registration closes **July 3**, but workshops are filling up quickly, so register as soon as you can.

[Learn about the CPSA convention](#)

I hope to see you this summer in Florida!

Sincerely,

Anda Chance, CPSA, CPX
Exhibitions Director
Colored Pencil Society of America
exhibitions@cpsa.org



Classes Offered by Members

Bonnie Haney

Understanding How to Draw from Live Flowers: The View Arts Center (Old Forge, NY), **virtual-Zoom**, classes recorded. Sundays July 10-August 28, 1:00-3:00 PM EST. Learn how to improve your drawing skill with inspiration from your own fresh flowers or live plants. For full details, go to <https://www.viewarts.org/workshops/fine-arts/>

Hanneke Jevons

Open Studio for colored pencil in my home on Wednesdays and Fridays from 2:00 to 4:00 PM. Space limited to 4 students. Please contact Hanneke at: hannoart@bellsouth.net

Pat Lentine

Colored Pencil and Pastel Artists: If you would like some input on your projects please join us in our online Zoom class. Each student brings to class a project they want to start or have started. Individual input on each project with each student. Class limited to 10 students. Tuesdays 7:00 - 9:00 pm and Wednesdays 1:00 - 3:00 Eastern. Register at my website www.patlentine.com/ or contact Pat at: pat@patlentine.com and 407-758-4437

Kathie Miranda

Bartlett Arboretum Botanical Art Club: In-person. Create a series of work from a yearlong survey of the Bartlett's plants. Monthly (ongoing), 1st Saturdays, 10:00-3:00 EST. Details at <http://www.bartlettarboretum.org/events-concerts> .

Liz Monaco

Colored Pencil Art: In-person, 3 weeks, Thursdays, July 7-14-21, 1:30-3:30 at **River House**, St. Augustine. Register at coasjc.coursestorm.com

Create Fine Art with Colored Pencils-Beginners: On campus! 6-weeks, Saturdays, starting May 7, 11:00-12:30 pm. Register and inquire at Flagler College, 800-304-4208 flagler.edu

Kathi Darby

TBD ~ new classes to be announced.

If you are offering instruction, please let us know so your information can be included in future issues.

We Need You!

CPSA-117 is 63 members strong!

The opportunities to participate and share are boundless...

Last newsletter and at the March meeting, an appeal was made to have members step forward to share their talents and expertise. Our membership represents a wealth abilities and a passion for creative endeavors. We need to tap into that reservoir of artistic gifts.

This is an **artists' call for you** to share your knowledge and expertise, whether a beginner or expert, we can always learn from each other. Here are some areas where you can shine ...

1) Would you like to lead a **demonstration** or give instruction on a **project** at a chapter meeting? Don't worry, we will help you with practice sessions and tech support.

2) Is there a hidden **journalist** within? We would love to have several individuals contribute to the **newsletter** on either a regular basis (a favorite topic, a monthly "column") or just occasionally with something that you have tried or researched (pencils, tools, paper, books, etc.).

3) Perhaps you are of a social mind ~ would you like to **facilitate** an online (Zoom) **virtual studio**? Can be any day or time, but a place for those who would like to collaborate and support our pencil community. You would utilize the chapter Zoom account and be given instruction and tech support, of course.

4) Would you like to spearhead a **chapter-wide pencil project** ~ as we did with the "Bridge" and "Clock" montages? Or a chapter publication? A wonderful way to interact with everyone.


Let's take advantage of what each of us has to offer with so many colored pencil artists and enthusiasts that have joined together from across the country. Please email your interests and suggestions: cpsa117staug@gmail.com ***We need YOU !!***

It's Not Too Late to Renew or Join!

The new year started **November 1**. But, if you forgot to renew or join, it's never too late ~ **you are always welcome here!** **NOTE: Joining now extends your membership thru 2023!**

- * The most efficient way to renew your **National** membership is to go to the website cpsa.org and renew online. Quick and easy. However, as a courtesy, we are including the National mail-in form below.
- * For the **Chapter**, go to our website cpsa117.org and go to the **Membership** page, where you will find an online form. Then to the **Store** page to pay the \$20. However, should you have any difficulties, simply let us know and we will get you signed up (cpsa117staug@gmail.com). **Thank you!**

CPSA Mail-in Membership Form



2022 Membership Year Ending October 31, 2022

Save time!

Join instantly online at
www.cpsa.org/membership

Use this form only if you are
UNABLE to pay online.

Make check payable to CPSA
(in U.S. funds) and mail
with completed form to:

Colored Pencil Society of America
4157 Mountain Rd #122
Pasadena, MD 21122-4455

PRINT CLEARLY

First Name (if desired, you may also add middle name or initial)		Last Name	
Street Address or PO Box			
City	State/Prov.	Zip/Postal Code	
<input type="checkbox"/> United States <input type="checkbox"/> Canada <input type="checkbox"/> Other Country: _____			
Primary Phone ()	Alternate Phone (if available) ()		
Primary Email Address			
Alternate Email Address (optional) in case we can't reach you at your primary email			
Your Personal Art Website (optional) for inclusion in the "Websites of Members" listing on the CPSA website			

I regularly teach colored pencil classes or workshops and would like to be included on the list of instructors on the CPSA website (updated January and June).
Note: Your website will be listed as how to contact you.

Please check and complete applicable items:

I am a new first-time member

I am renewing or rejoining

I belong to a CPSA district chapter

If so, which one? (City or chapter number):

Membership Payment
U.S. Funds Only*

One-Year Dues

\$45 U.S. and Canada

\$65 All Other Countries

Ten-Year Membership Option (U.S. only)

\$400 membership through October 2031

We welcome donations. Amounts in excess of dues will be considered a donation, and used for CPSA general operating expenses.

*CPSA charges a non-waiverable \$12 returned check fee for any check returned to us by your bank for any reason.

Membership Information

- Membership begins once your payment has been processed.
- Members may renew for the next membership year beginning July 15.
- Current members who fail to renew by December 31** lose their membership standing and forfeit any signature status they have earned.
- New first-time members who join on or after May 1** will have membership standing through October 31 of the following year.

Note to U.S. Members About Bulk Mailings

Your copy of the CPSA magazine will be mailed to the address on this form by bulk mail in November and May, providing your membership is paid as of October 31. Since the USPS **does not automatically forward bulk mail**, please make other arrangements if you'll be away at those times.

CPSA Directory Listings

The annual CPSA membership directory lists members as of January 1. Members will receive an email notification from CPSA when the digital directory is available to download. CPSA prohibits use of member information for promotional purposes without authorization from the CPSA national governing board.

I want a partial directory listing (name, city, state, country only) NOTE: Other members may find it difficult to contact you and you will miss out on special offers from our corporate members.

If you **MOVE** or have further questions, send an email to membership@cpsa.org, write to the address on this form, or choose "Change My Info" under Membership at www.cpsa.org.

2/10/2022

Our Board Members

CPSA-DC 117

President:

Linda Doup

Vice President:

Pat Lentine

Secretary:

Kathy Viehe

Treasurer:

Judy Madigan

Membership:

Kathi Darby

Newsletter/Website:

AJ Barr

Historian:

Kathy Viehe

Publicity:

Jo Ann Eurell

President Emeritus:

Hanneke Jevons

Membership Information

Chapter Membership Benefits:

- Networking with other colored pencil artists
- Participation in sketch groups
- Member discount rate for local workshops
- Chapter newsletter
- Opportunities for exhibits and event participation

A member of the local CPSA DC117 St. Augustine Chapter must also be a member of the Colored Pencil Society of America.

The benefits of CPSA membership are worth it:

- A national newsletter, To The Point, twice yearly.
- Product research, pigment identification, lightfast information
- Lower entry fee for annual CPSA exhibitions
- Lower rate for workshops at CPSA Convention
- International membership networking directory
- District Chapters for local and regional networking
- Free link to your website
- Ability to earn Signature status
- NOTE: Only CPSA members who have attained Signature Status may use the initials CPSA or CPX after their name.

CPSA remains firmly dedicated to the fundamental principles of inclusion and diversity, and to racial justice as an inalienable human right.

Newsletter Contact Info:

For submissions and requests to be profiled, please contact either AJ or Linda.

AJ 386-283-2433

cpsa117staug@gmail.com

Linda 386-295-0486

lindadou@att.net



MEMBERSHIP APPLICATION

New Membership Renewal

Check if you have paid CPSA National

NAME: _____

ADDRESS: _____

CITY: _____ STATE: _____

ZIP CODE: _____

EMAIL: (Please print) _____

PHONE(s): _____ (Home) _____ (Cell)

- Annual chapter dues are **\$20**.
- Membership year runs from November 1st to October 31st.
- Applications for CPSA National can be obtained through the website: www.cpsa.org

GO TO THE WEBSITE cpsa117.org/membership to complete the online form.

Then to the Store page to complete the payment. Thank you!