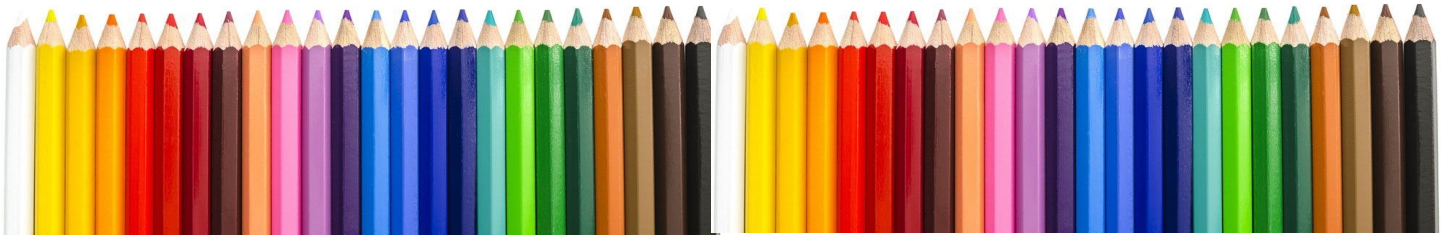


Pressing the Point

March 2022

CPSA
Colored Pencil Society of America

District Chapter 117 | St. Augustine FL



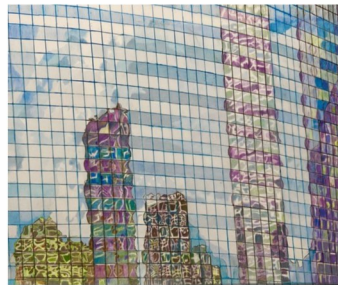
We meet on the 3rd Sunday of each month at 1:00 PM (except July & August).
Please check the website for any scheduling changes. www.cpsa117.org

CPSA
Colored Pencil Society of America

District Chapter 117 | St. Augustine FL



Artwork on DURA-LAR by Hanneke Jevons.



**Working
with
DURA-LAR**

**1:00 PM EST, Sunday, March 20, 2022
on Zoom**

Grafx DURA-LAR is an archival polyester film for drawing, drafting, stencil making and mixed media artwork. The surface of the film accepts pen, lead, ink, paint and colored pencil. Hanneke Jevons will demonstrate working on DURA-LAR and she will share what she has learned. There will not be a project to follow this month. Please join us to learn more about this exciting material.

Due to the Easter holiday on our regular meeting date, we will not have a meeting in April. Please join us May 15, 2022 for our next regularly scheduled meeting.

Members will receive an email with the Zoom link prior to the meeting. If you are not a member of CPSA DC 117 and would like to join us for our meeting, please email cpsa117staug@gmail.com so we can send you an invitation for the meeting. Deadline for registering is Saturday, March 19th. Non-members are allowed to attend up to three meetings before becoming a member of our chapter.

Welcome New Members

**Connie Grace
Amy Otilige
Karen Stanley**

We are delighted that you
joined our Chapter.

Thank you for your support.

**[Click here](#) or go to page 3
for some wonderful news!**

Please click the links or just
scroll through the newsletter to
see all the news!

[RoCo 6x6](#)

[Renewal Info](#)

**[March
Meeting](#)**

**[February
Recap](#)**

**[Member
Achievements](#)**

**[CPSA
National](#)**

[Classes](#)

Chapter Meeting

March ~ Spring is Around the Corner, Time to Create!

The weather has been extreme depending on where you live ~ from heat in Florida to snow storms up north, heavy rains, and a few tornados. Hopefully, everyone is safe and healthy.

- ◆ **Program** ~ Back by popular demand ~ **Hanneke Jevons** will be giving a demonstration using **Grafix Dura-lar**, a surface that accepts pen, graphite, ink, paint, and colored pencil and can be worked on both the front and back for richer colors. Kathy Viehe will also participate. This is not a work along project, but you are encouraged to acquire some of this fascinating material (from any art supply and online) as you will be inspired to try it for sure.
- ◆ **Challenge Update** ~ We will be showing the “reflection” challenge pieces that have been received so far. The new challenge will be announced and will be due by the June chapter meeting. The awards will also be discussed. As before, a drawing will be held at year end; please note, although everyone is invited to participate, only **members** are eligible to win the award.

Entries will be posted on the website [cpsa117.org/Challenge 2022/](https://cpsa117.org/Challenge%202022/). Submit entries to cpsa117staug@gmail.com.

- **2022 Member Exhibit** ~ Details for the August 2022 Member Exhibit will be announced. This will be both an in-gallery and online exhibit for all members regardless of location.
- ◆ **Convention** ~ There will be a follow up to see if there are any problems in getting registered for the July 2022 CPSA National Convention in Tampa, Florida.

We look forward to seeing everyone soon!!

Challenge Note: **Everyone** is invited to submit a photo of your work. The one rule is that your submission must have been done during and/or after the announcement (no prior work). Completing each challenge this year makes all **members** eligible for a drawing for a prize (gift card). But, more importantly, it will serve to strengthen your own skill set as you move forward with your colored pencil endeavors.

Zoom Info:

Remember, ***an email invitation will be sent to every member or guest with the link for the meeting.*** You will click on the link and then join in. Feel free to invite someone to attend with you ~ **all are welcome.**

To show your work, you can simply hold the piece up in front of your webcam. **OR**, you can email a photo of the piece to **AJ** (cpsa117staug@gmail.com) and we will display them for you. Problems joining that day? AJ (386) 283-2433.

Here is some wonderful news ...

CPSA Chapter 117 now has 60 members !

This represents a depth of talent and passion for art, especially colored pencil. We need to tap into that reservoir of artistic gifts.

This is an **artists' call for you** to share your knowledge and expertise, whether a beginner or expert, we can always learn from everyone.

Would you like to lead a **demonstration** or give instruction on a **project** at a chapter meeting? Don't worry, we will help you with practice sessions and tech support.

Is there a hidden **journalist** within? We would love to have several individuals contribute on either a regular basis (a favorite topic, a monthly "column") or just occasionally with something that you have tried or researched (pencils, tools, paper, books, etc.).

Perhaps you are of a social mind ~ would you like to **facilitate** an online (Zoom) **virtual studio**? Can be any day or time, but a place for those who would like to collaborate and support our pencil community. You would be given instruction and tech support, of course.

Let's take joy in this incredible milestone, that so many colored pencil artists and enthusiasts have joined together from across the country. Let us get to know **you** better and to be there for each other. Email cpsa117staug@gmail.com

February Meeting Recap

Pat Lentine, Vice President, welcomed everyone and introduced the Board members. Pat went on to discuss the current Challenge, due by the March meeting. The challenges this year build on the programs held last year; you will recall Liz Monaco's wonderful project with glass bottles. This challenge must incorporate a **reflection**; the compositions and subject matter will be your original creation.

Hanneke Jevons gave a preview of next month's demonstration that she will give on Grafix Dura-Lar Matte (a drafting film similar to Mylar) where color can be applied to both front and back. If you are procuring some, be sure it is matte on both sides, if possible; it is sold in rolls and pads.

The program was in two parts: Part 1, presented by **Pat Lentine**, was a review of the CPSA National website and how to prepare for the National Convention and Exhibition entries. Part 2 was a sharing of helpful tips let by Board members but with open participation by all those attending.

Here are the highlights:

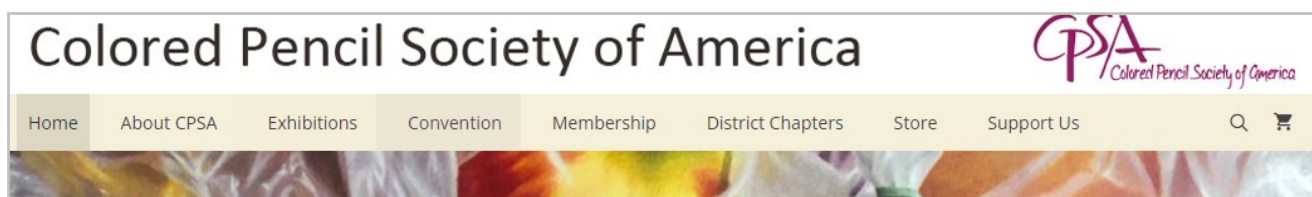
Part 1 - A tour of the CPSA National website and Exhibition entry which included Home, About, "*To the Point*" publication, Exhibitions, Explore This, Convention, Membership-Store-Merchandise. Then a demonstration of CaFE, the artist call website which CPSA uses to receive exhibition entries. The following pages are only able to give a high-level overview. You are strongly encouraged to really take some time to explore the CPSA website. It is a powerful website with so much information, including the works from past exhibitions which are a real inspiration.

Part 2 - A lot of fun and useful tips were presented by your fellow members and guests. It's not too late ~ if you have any tips that you would like to share, please send them in and we'll include them in the next newsletter and at the next chapter meeting.

A big thank you to **Pat Lentine** for such an in-depth look at what the CPSA organization has to offer. And more thanks to **everyone** who so generously shared their knowledge with the tips.

February Meeting Recap

Part 1 - A tour of the CPSA National website and Exhibition entry which started with the Home page.



2022 Convention Registration is Now Open



We're looking forward to our first convention in three years at Safety Harbor Resort and Spa in Safety Harbor, Florida, this summer.

[Register for the convention](#)

[Learn about convention activities](#)



[Download the convention info PDF](#)

[Convention Information](#)

[Register for Convention](#)

[Convention Activities](#)

[District Chapter Forum](#)

[Silent Auction](#)

On the “**Convention**” page, be sure to check out the “**Silent Auction**” link. Here you will find the “**Small Works of Great Magnitude**” where you can bid on these items, many by your favorite artists. A rare chance to own something of theirs.

2022 CPSA International Exhibition Entry Deadline is March 31

This will be a traveling exhibition shown in two galleries starting July 11 and ending November 15, 2022. **The top award is \$5,000.** Enter soon!



[Download the 2022 prospectus](#)

[See the 2021 International Exhibition](#)

[CPSA 2021 International Exhibition](#)

[Annual Shows](#)

[CPSA International](#)

[Explore This!](#)

[Award Galleries](#)

[CPSA International Images](#)

[Explore This! Images](#)

[ArtSpectations Awards](#)

[Information](#)

[Prospectus PDFs](#)

[Exhibition Requirements](#)

[Acceptable Products](#)

[Matting and Framing](#)

[Earning Signature](#)

[Art-Related Articles from TTP](#)

[Exhibition FAQs](#)

“**Register for the convention**” takes you to a simple online form.

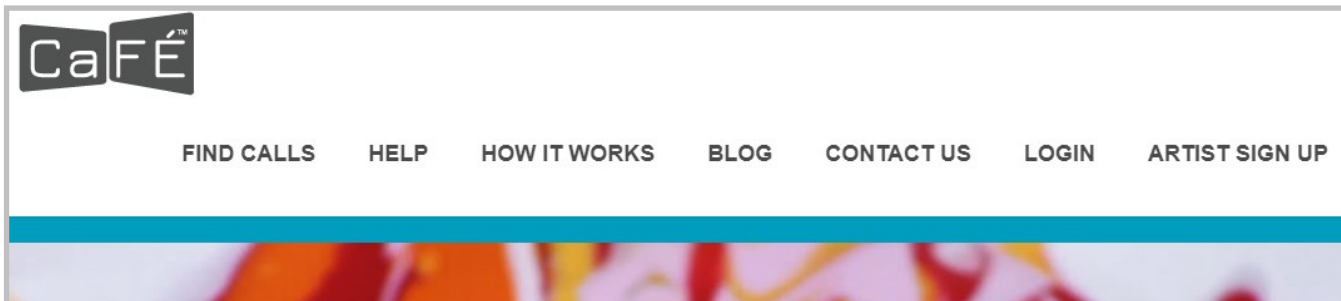
The “**Activities**” link includes information on the Hospitality Room, Meet & Greet, Workshops, the Art Gala, the Silent Auction, the Awards Banquet, the Artists’ Reception, and other events.

Everyone is encouraged to enter the **Exhibition**. Even if you don’t get selected for the Gallery shows, everyone’s work is included in a slide show at the convention. It’s great fun and good practice to go through the entry process.

Check out the “**2022 Prospectus**” for full details, as well as these other links.

Be sure to check out past exhibitions and winners on the “**CPSA International**” link.

February Meeting Recap



All submissions are completed through “CaFE”, a site that is dedicated to art show entries. Go to callforentry.org. It’s easy and it’s free ~ that is, to set up your account.

The entry fee for CPUSA is **\$25** for a member and \$35 for non-member.

The artist registration process is very easy, the site will walk you through it. Just some basic information.

Once you are set up, you can upload images, pick your event, easy pay, and everything else is done for you. Just follow the steps below.

Welcome AJ Barr

username: **Indigoblue**

Applying is a three-stage process. ALL steps must be completed to submit.

STEP 1: **My Portfolio.** Upload work samples.

STEP 2: **Apply to Calls.** Search calls and apply.

STEP 3: **Checkout.** Complete and checkout.

Colored Pencil Society of America 30th Annual International Exhibition 

MORE INFO

APPLY NOW

Call Type: Exhibitions

Eligibility: International

State: Florida

Fee: \$35.00 (Non-member)

Entry Deadline: 3/31/22

Days remaining to deadline: 12

Event Dates: 12/15/21 - 3/31/22

The CPUSA International Exhibition is the premier annual juried gallery exhibition exclusively for works done in **100% colored pencil**. Selected artists will vie for cash awards of over \$18,000 including the \$5,000 Best of Show (CIPPY Award).

As a special bonus in 2022, the exhibition will be on display at two different Florida galleries—one in the Tampa area (in conjunction with the annual CPUSA convention) and the other in Ormond Beach on the Atlantic Coast.

The juror for the 2022 exhibition is Christine Renc-Carter, Curator for the Leepa-Rattner Museum of Art, Tampa, Florida.

Here is the call page for CPUSA. Click **More Info** for complete information on everything you need to know.. Just follow the simple steps to complete the entry.

Don’t count yourself out ~ sometimes entries “not invited” in one year will be accepted in the next!

And CaFE has other shows from all over the world. Get yourself seen and have a good time doing it.!

February Meeting Recap

Part 2: Tips!

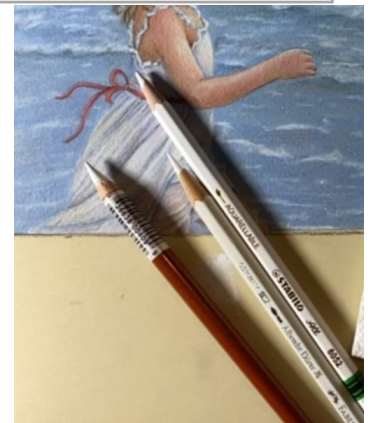
Hanneke Jevons: Barbara Dahlsted uses a **Royal Majestic #10** watercolor brush when applying a solvent, makes a big difference when using the right brush.



Kathi Darby: Use watercolor pencils for an underpainting, makes covering large background areas much easier.



Pat Lentine: Uses watercolor pencils for highlights, **NeoColor II** for example. Prefers **Stabilo**, **China**, and **Durer** pencils for whites.



Jo Ann Eurell: Jo Ann prefers either the **Swiffer** or **Pledge** dusters to clean off drawings.

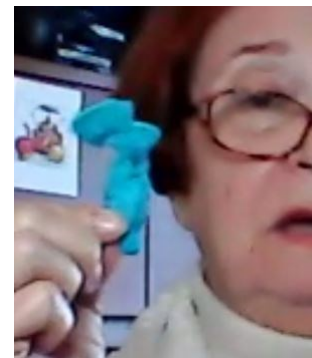
February Meeting Recap

Part 2: Tips!

Connie Grace: Connie swears by the **Afmat Electric Eraser**. Can get either battery powered or plug-in. They come with plenty of eraser tips!



Liz Monaco: Liz makes good use of poster putty. Picks up color and graphite, works better than kneaded erasers, no residue. Need tacky, museum quality putty. Prefers Elmer's Putty; stores the putty in little jars.



February Meeting Recap

Part 2: Tips!

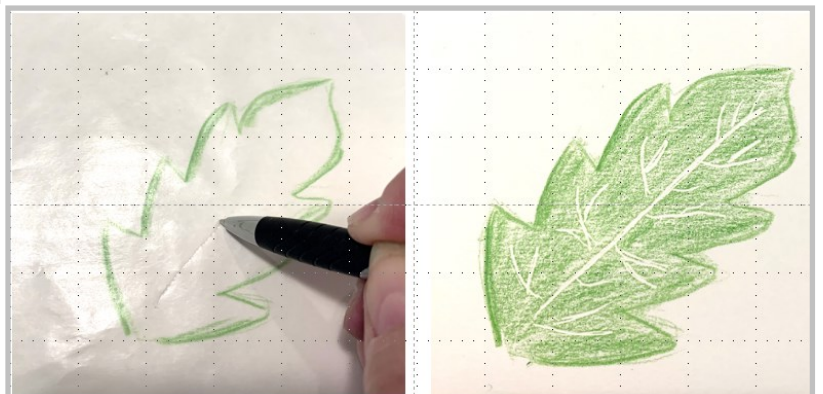
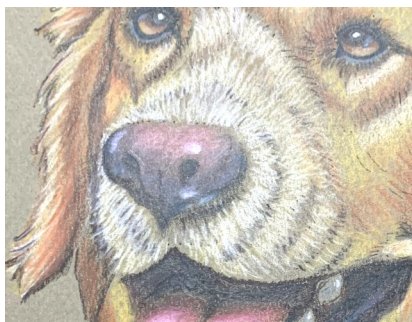
Linda Doup: Linda recalled that we first started using the “**typewriter**” eraser with Bill Shoemaker. It has remained a favorite ever since when working on suede. It not only blends, but enriches the colors. Available on Amazon.



Faber Castell Faber-Castell
Perfection Eraser Pencil with
Brush



AJ Barr: If you need to **impress** the paper and you don't have an embossing tool, here's a tip you can use in a pinch. Take wax or parchment paper, place over paper, and use a ball point pen to impress. It will give the same results to obtain fine lines.



Member Achievements

Congratulations, Linda Bishop !



“Mother’s Love”

The Bente Helgar Award

Artists’ Workshop 64th Annual
Members’ Show, New Smyrna
Beach, FL

*“Thank you, Patricia Roettgen
Lentine, CPXA, CPX, for your
guidance and support” Linda
Bishop*

Linda was also accepted in the
“CP Hidden Treasures 7” Kull-
berg upcoming publication.

Congratulations, Pat Lentine !

A Double Win ...

“Winter’s Warm Glow”

The Ruth Fraleigh Memorial Award

*Artists’ Workshop 64th Annual
Members’ Show, New Smyrna
Beach, FL*

And ...

*Award of Distinction
Art League of Daytona Beach, FL*



Member Achievements

Work of Our Members on Display

Faces and Figures

St. Augustine Art Association

In-Gallery and Online



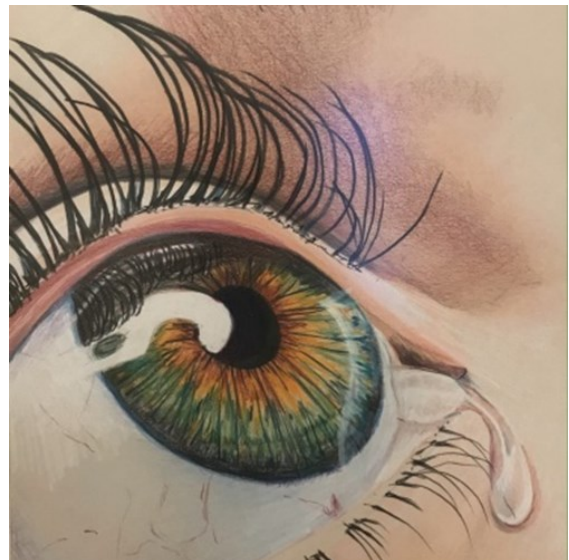
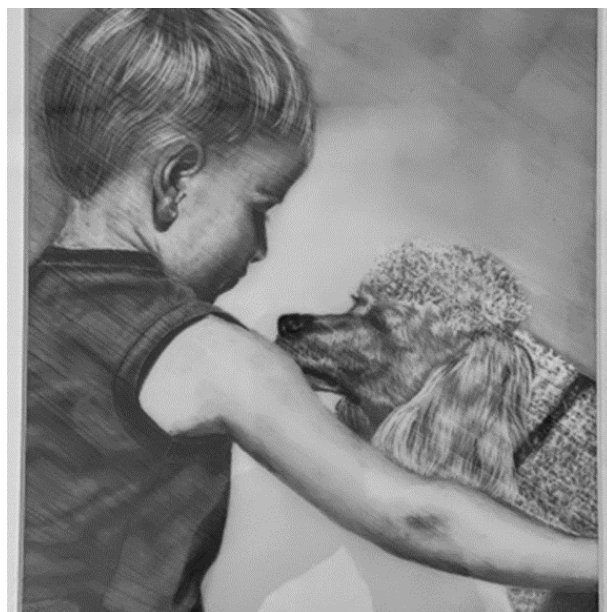
“Hard Headed People”

Kathi Darby

Kathi’s ***“Future King”*** was juried into the Biafarin **Extinction! Save the Planet Show** (No photo available)

“Happy? Or Sad?”

Liz Monaco



“New Friends”

Hanneke Jevons

Member Achievements

Work of Our Members on Display

Fauna and Flora
Red Bluff Art Gallery
Red Bluff, CA



“Bobcat in the Brush”

by **Robert Sena**

Robert’s work will be featured in room 3 of the virtual exhibit
Colored pencils on Canson paper, 9.5” x 12.25”

Prismacolor pencil drawing of a bobcat, from a photo taken
by Bob at Lake Apopka, Florida.

Have you received an award or recognition or were featured in an art exhibition? Please let us know! We want to share your good news. ***Your achievements are an inspiration for others!***

2022 Call for Entries and Prospectus



30th Annual Colored Pencil Society of America International Exhibition

The CPSA International Exhibition is an annual juried gallery exhibition exclusively for works done in 100% colored pencil. It is held in a different city each year to provide more people the opportunity to enjoy colored pencil as a fine art medium. Awards include a \$5,000 Best of Show and CIPPY Award. In 2021, awards totaling \$19,525 were given to the 14 award winners.

As a special bonus in 2022, the CPSA International Exhibition will be on display at two different Florida galleries—one in the Tampa area (in conjunction with the annual CPSA convention) and the other in Ormond Beach on the Atlantic Coast. See page three for more information.

Important Dates

Entries Accepted Dec. 15, 2021–Mar. 31, 2022
Selected Artists Announced . . . May 1, 2022
Arrival Window for Artwork June 19–29
Award Winners Notified July 12–15
CPSA International Exhibition . July 11–November 15
 Dunedin Fine Art Center July 11–August 13
 Ormond Beach Art Museum Sept. 1–November 15
Artwork Return Shipping Departs week of Nov. 22

Annual CPSA Convention July 27–30, 2022

A separate PDF with information about attending the CPSA convention at the Safety Harbor Resort & Spa in Safety Harbor, Florida, will be available on the CPSA website at www.cpsa.org by February 15, 2022.

Convention registration opens March 1, 2022.



Since 1990

WHAT TO KNOW BEFORE YOU ENTER

Eligibility

The exhibition is open to living artists 18 years or older, regardless of geographic location. There is no preferential treatment for CPSA members versus non-members.

Entry Fee

Nonrefundable entry fee: CPSA members \$25 and non-members \$35. Fee covers one or two entries.

Deadline for Entries

11:59 p.m. (Mountain Time), March 31, 2022. Do not wait until the last minute.

Meeting Artwork Specifications

Selection of artwork by the juror does not guarantee artwork will appear in the show. Upon receipt of the accepted work at the gallery, a final review verifies that artwork meets execution and framing specifications (page 2) and is of the same quality depicted by digital image. Artwork determined at any time before, during, or after the exhibition to not meet specifications will be disqualified. Artwork **must** hang in the show to count toward signature status.

Your Commitment to Ship

By submitting an entry you are making a commitment to ship your artwork, if accepted, to the CPSA exhibition for the full duration of the event, including a second showing in Ormond Beach, Florida. Do not submit a piece that is not available for the full duration. Each work not sent deprives another artist of the opportunity to be in the exhibition.

Permission and Copyright

By submitting an entry, the Artist grants permission for CPSA to use the accepted image in its news magazine, *To The Point*, on its website at www.cpsa.org, for CPSA brochures and promotional materials, and in publicity about CPSA. Every effort will be made to maintain quality true to the submitted image. By entering, the Artist certifies that he or she holds the copyright for this material and the copyright remains with said Artist. CPSA will display a notice that material must not be “downloaded” or copied, but will not be held responsible if artwork is copied.

The Artist also certifies that the work submitted is original and does not infringe on any existing copyright. If artwork includes image of any identifiable person, Artist certifies that a model release for such person has been obtained.



Rochester Contemporary Art Center
 137 East Avenue
 Rochester, NY 14604
 585.481.2222

summer hours: Wed - Sun 12-5pm / Fri 12-9pm
rochestercontemporary.org

6x6

- Walk-In Entries Due:** April 9
- Mail International Entries** by April 2 / U.S. by April 12
- Global Online Preview Begins:** May 13 at 10am
- In Gallery Preview:** May 31–June 3
- Opening Party & Artwork Sale:** June 4, 4-10pm
- Global Online Purchasing Begins:** June 7 at 10am
- Sold Out Artists' Names Revealed Online:** July 1
- Purchased Artwork Pick-Up:** July 17-20, 12-6pm
- Exhibition Dates:** June 4 - July 17, 2022
- Social:** #RoCo6x6 #6x6MAD @RoCo137

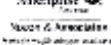
6x6 the international small art phenomenon brings together thousands of original artworks, made and donated by celebrities, international & local artists, designers, youth and YOU. Each artist may enter up to **four artworks** of any medium (2D or 3D). Artworks must be six inches square and signed only on the back, to be exhibited anonymously. Participation is free. All artworks will be exhibited and for sale to the public for \$20 each to benefit RoCo. Artists' names will be revealed to the buyer upon purchase and all artworks remain on display through July 17. **Limit four artworks per school. Entries accepted now through the deadline date.** Versión en español disponible en roco6x6.org

March 4 is Make Art Day! Get together with friends, family, or coworkers to create your 6x6s. Visit our website for more info: roco6x6.org

ArtLink:6x6s



Artistic



Global Entry



Classes Offered by Members

Bonnie Haney

Perspective: How to See It, How to Draw It, The View Arts Center (Old Forge, NY)
1-, 2-, 3-point perspective, all aspects such as landscape, still life, buildings, and portraits. Class is recorded. For full details, go to <https://www.viewarts.org/workshops/fine-arts/how-to-see-it-how-to-draw-it/>

Hanneke Jevons

Open Studio for colored pencil in my home on Wednesdays and Fridays from 2:00 to 4:00 PM. Space limited to 4 students. Please contact Hanneke at: hannoart@bellsouth.net

Pat Lentine

Colored Pencil and Pastel Artists: If you would like some input on your projects please join us in our online Zoom class. Each student brings to class a project they want to start or have started. Individual input on each project with each student. Class limited to 10 students. Wednesday 1:00 - 3:00 East. Register at my website www.patlentine.com/ or contact Pat at: pat@patlentine.com and 407-758-4437

Kathie Miranda

Bartlett Arboretum Botanical Art Club: In-person. Create a series of work from a yearlong survey of the Bartlett's plants. Monthly (ongoing), 1st Saturdays, 10:00-3:00 EST. Details at <http://www.bartlettarboretum.org/events-concerts> .

Liz Monaco

Colored Pencil Art: In-person, 4 weeks, Wednesdays, starting Apr 6, 1:30-3:30 at River House, St. Augustine. Register at coasjc.coursestorm.com

Create Fine Art with Colored Pencils-Beginners: On campus! 6-weeks, Saturdays, starting May 7, 11:00-12:30 pm. Register and inquire at Flagler College, 800-304-4208 flagler.edu

Kathi Darby

Exploring Grisaille with Colored Pencil: Butterfly Workshop: In-person at the Ormond Art Museum, Friday April 29, 12:30-3:30 pm. Register at ormondartmuseum.org

If you are offering instruction, please let us know so your information can be included in future issues.

It's Not Too Late to Renew or Join!

The new year started **November 1**. But, if you forgot to renew or join, it's never too late ~ **you are always welcome here!**

- * The most efficient way to renew your **National** membership is to go to the website cpsa.org and renew online. Quick and easy. However, as a courtesy, we are including the National mail-in form below.
- * For the **Chapter**, go to our website cpsa117.org and go to the **Membership** page, where you will find an online form. Then to the **Store** page to pay the \$20. However, should you have any difficulties, simply let us know and we will get you signed up (cpsa117staug@gmail.com). **Thank you!**

CPSA Mail-in Membership Form



2022 Membership Year Ending October 31, 2022

Save time!
Join instantly online at
www.cpsa.org/membership

Use this form only if you are
UNABLE to pay online.

Make check payable to CPSA
(in U.S. funds) and mail
with completed form to:

Colored Pencil Society of America
4157 Mountain Rd #122
Pasadena, MD 21122-4455

Please check and complete applicable items:

- I am a new first-time member
- I am renewing or rejoining
- I belong to a CPSA district chapter

If so, which one? (City or chapter number):

Membership Payment U.S. Funds Only*

One-Year Dues

- \$45 U.S. and Canada
- \$65 All Other Countries

Ten-Year Membership Option (U.S. only)

- \$400 membership through October 2031

We welcome donations. Amounts in excess of dues will be considered a donation, and used for CPSA general operating expenses.

*CPSA charges a non-waiverable \$12 returned check fee for any check returned to us by your bank for any reason.

PRINT CLEARLY

First Name (if desired, you may also add middle name or initial)		Last Name
Street Address or PO Box		
City	State/Prov.	Zip/Postal Code
<input type="checkbox"/> United States <input type="checkbox"/> Canada <input type="checkbox"/> Other Country: _____		
Primary Phone () ()	Alternate Phone (if available) () ()	
Primary Email Address		
Alternate Email Address (optional) in case we can't reach you at your primary email		
Your Personal Art Website (optional) for inclusion in the "Websites of Members" listing on the CPSA website		
<input type="checkbox"/> I regularly teach colored pencil classes or workshops and would like to be included on the list of instructors on the CPSA website (updated January and June). Note: Your website will be listed as how to contact you.		

Membership Information

- Membership begins once your payment has been processed.
- Members may renew for the next membership year beginning July 15.
- **Current members who fail to renew by December 31** lose their membership standing and forfeit any signature status they have earned.
- **New first-time members who join on or after May 1** will have membership standing through October 31 of the following year.

Note to U.S. Members About Bulk Mailings

Your copy of the CPSA magazine will be mailed to the address on this form by bulk mail in November and May, providing your membership is paid as of October 31. Since the USPS **does not automatically forward bulk mail**, please make other arrangements if you'll be away at those times.

CPSA Directory Listings

The annual CPSA membership directory lists members as of January 1. Members will receive an email notification from CPSA when the digital directory is available to download. CPSA prohibits use of member information for promotional purposes without authorization from the CPSA national governing board.

- I want a partial directory listing (name, city, state, country only) NOTE: Other members may find it difficult to contact you and you will miss out on special offers from our corporate members.

If you **MOVE** or have further questions, send an email to membership@cpsa.org, write to the address on this form, or choose "Change My Info" under Membership at www.cpsa.org.

2/10/2022

Our Board Members

CPSA-DC 117

President:

Linda Doup

Vice President:

Pat Lentine

Secretary:

Kathy Viehe

Treasurer:

Judy Madigan

Membership:

Kathi Darby

Newsletter/Website:

AJ Barr

Historian:

Kathy Viehe

Publicity:

Jo Ann Eurell

President Emeritus:

Hanneke Jevons

Membership Information

Chapter Membership Benefits:

- Networking with other colored pencil artists
- Participation in sketch groups
- Member discount rate for local workshops
- Chapter newsletter
- Opportunities for exhibits and event participation

A member of the local CPSA DC117 St. Augustine Chapter must also be a member of the Colored Pencil Society of America.

The benefits of CPSA membership are worth it:

- A national newsletter, To The Point, twice yearly.
- Product research, pigment identification, lightfast information
- Lower entry fee for annual CPSA exhibitions
- Lower rate for workshops at CPSA Convention
- International membership networking directory
- District Chapters for local and regional networking
- Free link to your website
- Ability to earn Signature status
- NOTE: Only CPSA members who have attained Signature Status may use the initials CPSA or CPX after their name.

CPSA remains firmly dedicated to the fundamental principles of inclusion and diversity, and to racial justice as an inalienable human right.

Newsletter Contact Info:

For submissions and requests to be profiled, please contact either AJ or Linda.

AJ 386-283-2433

cpsa117staug@gmail.com

Linda 386-295-0486

lindadou@att.net



MEMBERSHIP APPLICATION

New Membership Renewal

Check if you have paid CPSA National

NAME: _____

ADDRESS: _____

CITY: _____ STATE: _____

ZIP CODE: _____

EMAIL: (Please print) _____

PHONE(s): _____ (Home) _____ (Cell)

- Annual chapter dues are **\$20**.
- Membership year runs from November 1st to October 31st.
- Applications for CPSA National can be obtained through the website: www.cpsa.org

GO TO THE WEBSITE cpsa117.org/membership to complete the online form.

Then to the Store page to complete the payment. Thank you!