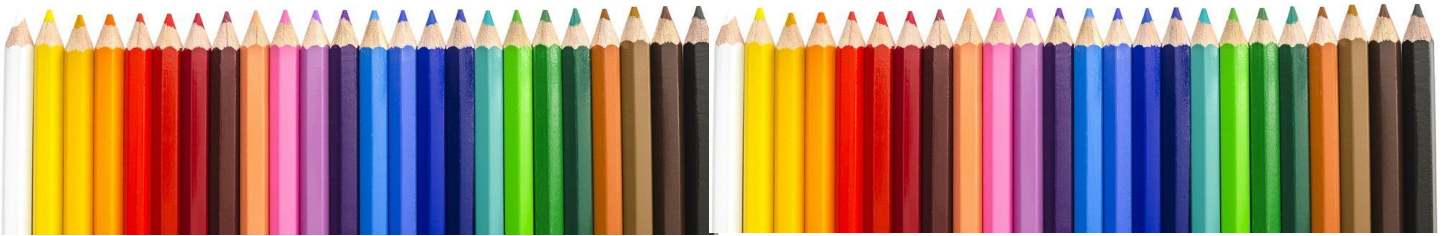


Pressing the Point

March 2021

CPSA
Colored Pencil Society of America

District Chapter 117 | St. Augustine FL



CPSA-DC 117
160 Cypress Point Pkwy
Suite A208 (2nd floor)
(Flagler County Art League)
Palm Coast, FL 32164

We meet on the 3rd Sunday of each month at 1:00 PM
(except July & August – no meetings).

Please check the website for any scheduling changes.

www.cpsa117.org



SCRATCHBOARD ART

Sunday, March 21, 2021, 1:00 PM

Hanneke Jevons will present our March program on Scratchboard Art. An updated list of supplies and instructions for participating in the project follows this meeting announcement. Come join us for lots of fun!

If you are not a member of CPSA DC 117 and would like to join us for our meeting, please email cpsa117staug@gmail.com so we can send you a Zoom invitation. Registration deadline for the meeting is Saturday, March 20th.

Details and supply list follow—keep reading!



[January](#)
[Challenge Entries](#)

[March Meeting](#)

[February Recap](#)

[Scratchboard List](#)

[Member Awards](#)

[Classes](#)

Chapter Meeting

March! Is it Spring yet? Did you remember to “spring forward” with the time change? First, be sure to note the date and time for the upcoming Chapter meeting ~ **Sunday, March 21 at 1:00 pm** via Zoom. Here’s what we will be doing:

- ◆ **Hanneke Jevons** will be our presenter for Scratchboard art. The supply list was sent last month to every member and all guests. So, hopefully, you have had time to gather the materials for this special presentation. Also included was a reference photo, however, you can use your own photo if you wish ([click here](#)) for the supply list and reference photo). This will be a completely new technique for many of us ~ and part of the **monthly challenge** program for this year. So, do join in for a real “challenge.”
- ◆ The Chapter Member show will be open just before the meeting. **Hanneke** will be giving the award results and other comments about the show.
- ◆ Be sure to submit your February challenge photos (pencil on wood) or be prepared to hold your piece up during the meeting. Sending in the photo does allow Pat to present a nice “slide” show with screen share. Send to either Pat (pat42@pme.com) or AJ (cpsa117staug@gmail.com).
- ◆ Of course, please have at hand your work in progress that you would like to share. Apologies that we ran short on time last month!

Looking forward to seeing everyone at the meeting!

Zoom Info:

Remember, ***an email invitation will be sent to every member or guest with the link for the meeting.*** You will click on the link and then join in. Feel free to invite someone to attend with you ~ **all are welcome.**

To show your work, you can simply hold the piece up in front of your webcam. **OR**, you can email a photo of the piece to either **Pat Lentine** (pat42@me.com) or **AJ** (cpsa117staug@gmail.com) and we will display them for you.

Problems joining that day? Pat (407) 758-4437. Linda (386) 295-0486. AJ (386) 283-2433.

February Meeting Recap

Once again we were so happy to welcome our **20 guests** (see right panel) ~ we so appreciate your participation. It's a great joy to share colored pencil art with so many from across the country. **Pat Lentine** also introduced Board members present.

Mark Menendez gave an overview of the Chapter sponsored workshop that will take place in July. Make note of these dates, **July 16, 17, and 18** (Fri, Sat, Sun). Day 1 is a color study. Days 2 and 3 will be portraits. Details will continue to be rolled out.

Pat went on to present the January fur challenge submissions ([click here](#)). **Hanneke Jevons** talked about the Member show in March, which will be open at the time of the **March 21st** meeting. Barbara Dahlsted is the judge.

Welcome!

Anda Chance
Catherine Cote
Laurel & Joe Krizek
Connie Grace
Sharon Meng
Diane Dumas
Kathie Miranda
Amy Otilige
Mary Ellen Geissenhainer
Colleen Bohan
Judith Bonn
Sue Braastad
Mattea Truppe
Jan Fagan
Bonnie Bishop
Trish Pelletier
Barbara Winkle
Lynne Pedersen
Ellen Gephart



For the program, and monthly challenge, **Kathi Smith** presented a fascinating program of colored pencil on wood, specifically using Matryoshka dolls for the demonstration. No matter if you worked on the dolls, other types of wood, or paper, we all learned a great deal about this process.

Kathi made special mention that she was inspired by **Jan Fagan** with some of the work that she does. Kathi walked us through step-by-step, from outlining the design to the final details. There were many tips along the way and some great conversation among the group. The following pictures give an overview of the steps.

As before, **everyone** is invited to either submit a photo of your work or you can hold it up during the meeting. Both ways count as a submission for the **monthly challenge**. Completing each challenge this year makes you eligible for a drawing for a prize (to be determined). But, more importantly, it will serve to strengthen your own skill set as you move forward with your colored pencil endeavors.

Thank you, Kathi, for such a unique project!



Start to draw - follow pattern



Front



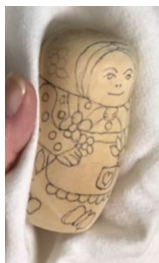
Back



Top



Arms



Reline with micron pen



Begin to apply color



Steps

1. Hold doll with a cloth to protect from oils from oils on your hands and to prevent smearing.
2. Draw circle for face; add eyes, nose, mouth. Add hair.
3. Scarf—bring to point in back, bow in front.
4. Arms—find center of side, add hands.
5. Apron—straps in center of chest.
6. Add pocket, heart, and trim.
7. Back—add bows and straps.
8. Place flowers in hands.
9. Add small details—flowers on scarf, dots on top, bees on skirt.
10. Use micro pen to reline the pattern.
11. Use Gamsol or other OMS to smooth colors.
12. Spray on workable fixative over final layer of pencil.



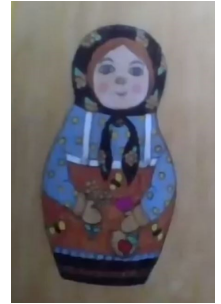
Kathi S.



Liz



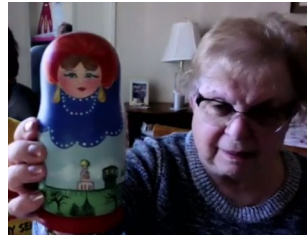
Anda



Mahiba



Sharon & Connie



Connie



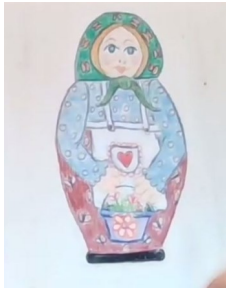
Helene



Jo Ann



Pat



Kathi D.



Barbara



Mattea



Sophia



Colleen



Laurel & Joe





Beth Harper



Jo Ann Eurell



Kathi Darby



Pat Lentine



Pat Lentine



Mahiba Vincent



Linda Bishop



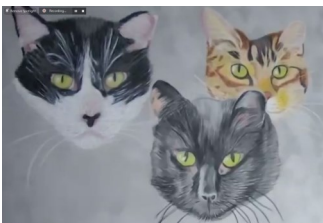
Sophia Kostopoulos



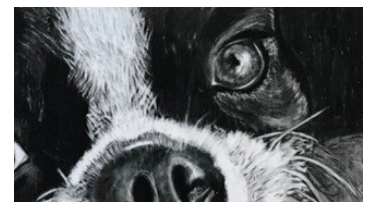
Kathy McLean



Dale Whaley



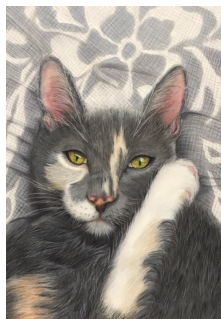
Judy Madigan



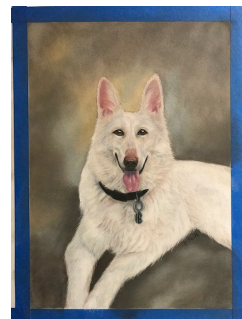
Kathy Viehe



Apologies ~ Name Unknown



Kathi Smith



Kathi Smith



AJ Barr

SCRATCHBOARD ART

Scratchboard art is a technique where papers or boards, covered with wax, gesso, or clay, are scratched into with tools to reveal a white, colored, or metallic surface.

The resulting artwork can be extremely unique and fun for artists of all skill levels. There are many options, including kits, for children. For professional artists, *Ampersand* and *Essdee* have developed coated art panels that can be used with paints, airbrushes, engraving tools, or for mixed media art and collage. *Blick* also carries a variety of wood sticks, brushes, knives, and other scratchboard tools for creating special textures and effects in your scratchboard art. There are many creative possibilities.

For the demo, we will start with the very basics; the tools suggested are the least expensive. So, if you like it, you can invest in better quality tools and papers/clay boards.

Ordering tips for *Dick Blick Art Materials* (dickblick.com) (also available at other art retailers):

1. *Scratch-Art Tool Set* (one pen holder and 7 knife points), #14939-1009, \$10.60.
2. A sheet or two of inked paper or *clayboard*:
 - *Scratch-Art Scratchboard*, black sheet #13506-2085, \$0.55 (8 ½"x11").
 - *Ampersand Scratchbord* (clayboard), #14914-2080, \$5.84 (8"x8").
3. Solid surface to tape paper on (a drawing board or other similar surface).
4. My black and white image or one of your own choosing.
5. White or grey tracing paper, if needed (you can draw freehand of course):
 - For example, *Sara Wax-Free Transfer Paper* (white roll), or other brands, widely available
6. A few sharp pointed colored pencils (greens for background).

For the March 21st Chapter meeting session, you are encouraged to have your image traced on the black paper or board using white transfer paper prior to the demo so that you will have more time to complete this project.

See next page for full size reference photo.

Reference Photo for Scratchboard ~ or you may use your own photo



Member Awards

Congratulations! John Guiseppi

**Tampa Regional Artists
Fun - Fur & Feathers 2021**



3rd Place
"Scarlet Macaw"
Strathmore 400, Prismacolor - 11" x 15"
John's reference photo from ZooTampa.

**International Guild of Realism
Spring Salon Online Exhibition
March 20 – May 20, 2021**



Selected as a finalist for the exhibit.

"56 Ford Fairlane"
Colored pencil, 10" x 17"
Selected as a finalist for the exhibit.

**CPSA DC 113 – Gainesville
It's Colored Pencil!
Webber Center Gallery
College of Central Florida - Ocala, FL
February 22-March 25, 2021**

**1st Place
"Screamin Eagle"
Strathmore 300, 11"x14"**



Classes

Classes Offered by Members

Hanneke Jevons

Open Studio for colored pencil in my home on Wednesdays and Fridays from 2:00 to 4:00 PM. Space limited to 4 students. Please contact Hanneke at:

hannoart@bellsouth.net

Pat Lentine

Colored Pencil and Pastel Artists: If you would like some input on your projects please join us in our online Zoom class. Each student brings to class a project they want to start or have started. Individual input on each project with each student. Students benefit from discussion of their own pieces as well as for other student's projects.

Class limited to 10 students. Wednesday 1:00 - 3:00. Class fee \$10.00/session.

You can sign up each week via my website using this link

<https://www.patlentine.com/on-line-classes-1>

If you are new to Zoom or have questions, please contact Pat at:

pat@patlentine.com and 407-758-4437

Kathi Darby ~ Flagler County Art League

Colored Pencil Series: weekly, Monday afternoons, 1:30 to 4:00 pm

\$20/per week members, \$30/per week future members

Liz Monaco ~ Flagler County Art League

Beginning Drawing Series: Jan 21 thru Feb 25 (Thurs), 9:30 to 11:30 am

\$120 members, \$180 future members

Pet Portraits Series: Feb 4 thru Feb 25 (Thurs), 1:30 to 3:30 pm

\$80 members, \$120 future members

Intermediate Drawing Series: Mar 4 thru Mar 25 (Thurs), 1:30 to 3:30 pm

\$80 members, \$120 future members

If you are offering instruction, please let us know so your information can be included in future issues.

Our Board Members

CPSA-DC 117

President:

Linda Doup

Vice President:

Pat Lentine

Secretary:

Kathy Viehe

Treasurer:

Judy Madigan

Membership:

Kathi Darby

Newsletter/Website:

AJ Barr

Historian:

Kathy Viehe

Publicity:

Jo Ann Eurell

President Emeritus:

Hanneke Jevons

President Emeritus:

Bill Shoemaker

Membership Information

Chapter Membership Benefits:

- Networking with other colored pencil artists
- Participation in sketch groups
- Member discount rate for local workshops
- Chapter newsletter
- Opportunities for exhibits and event participation

A member of the local CPSA DC117 St. Augustine Chapter must also be a member of the Colored Pencil Society of America.

The benefits of CPSA membership are worth it:

- A national newsletter, To The Point, twice yearly.
- Product research, pigment identification, lightfast information
- Lower entry fee for annual CPSA exhibitions
- Lower rate for workshops at CPSA Convention
- International membership networking directory
- District Chapters for local and regional networking
- Free link to your website
- Ability to earn Signature status
- NOTE: Only CPSA members who have attained Signature Status may use the initials CPSA or CPX after their name.

CPSA remains firmly dedicated to the fundamental principles of inclusion and diversity, and to racial justice as an inalienable human right.

Newsletter Contact Info:

For submissions and requests to be profiled, please contact either AJ or Linda.

AJ 386-283-2433
msajbarr@earthlink.net

Linda 386-295-0486
lindadoup@att.net

MEMBERSHIP APPLICATION DISTRICT CHAPTER 117 – ST. AUGUSTINE

New Member or Renewal

Check if you have paid your CPSA National dues

NAME: _____

ADDRESS: _____

CITY: _____

STATE: _____ ZIP CODE: _____

EMAIL: _____

PHONES(S): _____

Annual chapter dues are **\$20**. The membership year runs from November 1st to October 31st.

Checks made out to: **CPSA-DC117 St. Augustine**

Mail to: Kathi Darby
13 Bleau Court
Palm Coast, FL 32137