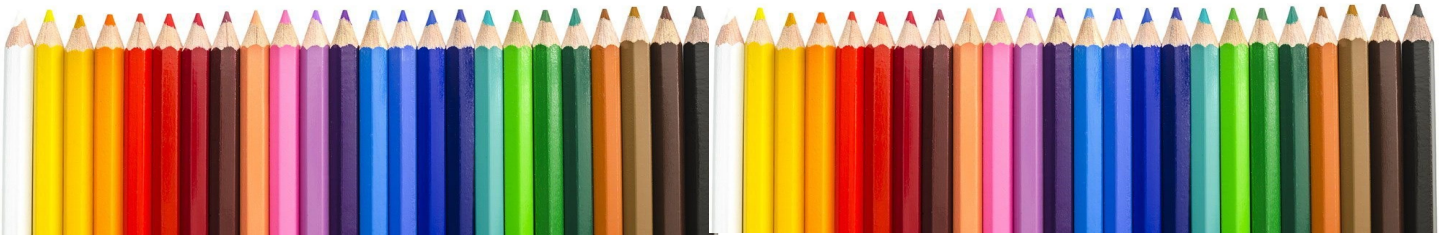


Pressing the Point

Holiday Dec 2021 * Jan 2022

CPSA
Colored Pencil Society of America

District Chapter 117 | St. Augustine FL



We meet on the 3rd Sunday of each month at 1:00 PM (except July & August).
Please check the website for any scheduling changes. www.cpsa117.org

CPSA
Colored Pencil Society of America

District Chapter 117 | St. Augustine FL



*Reminder - we will not meet in December.
Enjoy your holidays. We'll be back in January.*

*Don't forget to turn in your 2021 Challenge entries to A.J. before
the January meeting.*

*Also, the 2022 CPSA International Exhibit will be shown nearby in
Ormond Beach. Entries for the show will be accepted starting 12/15/21
and closing 3/31/22. Go to the CPSA website (<https://cpsa.org/>) to learn more.*

Note to Members

As of this writing, our Chapter is **52** members strong. How remarkable! We are so grateful for each and every one of you that renewed or newly joined this year.

This membership presents a wonderful opportunity to share knowledge over a broad spectrum of skills. The depth of experience represented, whether long or short, will enhance all of our adventures in colored pencil this year.

Thank you ~ can't wait to see everyone in the New Year!

Please click the links or just scroll through the newsletter to see all the news!

[Full Size Demo Sheet](#)

[Renewal Info](#)

[Dec-Jan Meeting](#)

[November Recap](#)

[Member Achievements](#)

[CPSA National](#)

[Classes](#)

Chapter Meeting

December & January ~ Enjoy Your Holidays!

As previously announced, we did not have a December meeting. We felt that after the big push during the pandemic, we needed this holiday season to relax and, hopefully, get together with family and friends.

- ◆ **Upcoming Programs** ~ There is no program for December, of course. The program details for January will be announced shortly. **Kathi Darby** will be presenting “**Grisaille for Colored Pencil.**”
- ◆ **Grisaille** comes from the French term meaning “grey.” This technique is often used in traditional painting. Applying this technique to colored pencil is a method to first understand the **values** of the drawing. The result is an underpainting that will enhance the final piece. It forces you to define the shadows and to determine your light, middle, and dark palette for any color that you might add.
- ◆ **Challenge Update** ~ Continue to check the website ([cpsa117.org/Challenge 2021/](https://cpsa117.org/Challenge2021/)) not only to see the latest challenge entries, but to make sure that any of your entries have to be received and uploaded. If yours is missing, notify AJ right away (cpsa117staug@gmail.com).
- ◆ **Sharing** ~ We will be sharing the latest Challenge entries in January and invite you to bring along your works-in-progress to share with the group.
- ◆ **Challenge Drawing** ~ The drawing will be held during the January meeting. Don't miss out on the fun! New challenges will be announced soon

We look forward to hearing from everyone after the holidays to catch up on all your activities. See you soon!!

Challenge Note: **Everyone** is invited to submit a photo of your work. The one rule is that your submission must have been done during and/or after the Chapter meeting (no prior work). Completing each challenge this year makes you eligible for a drawing for a prize (gift card). But, more importantly, it will serve to strengthen your own skill set as you move forward with your colored pencil endeavors.

Zoom Info:

Remember, ***an email invitation will be sent to every member or guest with the link for the meeting.*** You will click on the link and then join in. Feel free to invite someone to attend with you ~ **all are welcome.**

To show your work, you can simply hold the piece up in front of your webcam. **OR**, you can email a photo of the piece to **AJ** (cpsa117staug@gmail.com) and we will display them for you. Problems joining that day? AJ (386) 283-2433.

November Meeting Recap

There was a great turnout for the meeting, totaling 45. A warm welcome was extended to everyone by **Linda Doup**.

A reminder was given that there would be no December meeting to allow everyone who has worked so hard during the pandemic a bit of a respite and for all of us to focus on family and friends during the holiday season.

An exciting bit of news was shared. The **CPSA National Convention**, to be held in Tampa, Florida (July 27-30, 2022), will have two exhibition venues, one being at the **Ormand Art Museum** in Ormand Beach (Sep 1-Nov 15, 2022). For those living in the Palm Coast area, this is practically in our backyard. (See more info below in the newsletter)

Pat Lentine reminded everyone to get their Challenges in, especially the one from November, submitted as quickly as possible. The drawing for 2021 will be held at the January meeting.

The presentation was given by **Kathie Miranda**, who lives in Connecticut and is a well-known instructor, currently teaching several classes at the Bartlett Arboretum. (See bio below). Kathie is an expert botanical artist; the title of this demonstration is "**Blossom on Black Paper**." Drawing on black paper requires certain techniques, and the use of this paper in conjunction with a botanical drawing can be daunting.

However, Kathie went above and beyond with a **color exercise** (a continuous tonal bar) to provide a thorough grasp of this skill. Here is Kathie's description: "*Black paper adds an entirely different dimension to chromatic colored pencil layers: translucent colors are subtle while more opaque colors appear to pop off the page. Colored pencil art on black paper looks rich and sumptuous: the effect moody and atmospheric.*"

The demo was so in-depth that it is impossible to capture all of it here. Everyone left the meeting with a wealth of knowledge and, hopefully, the desire to continue to explore and master drawing on black paper. Photos follow to give some idea of the content. **** See Kathie's full size demo sheet below.**

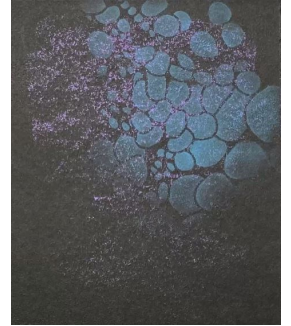
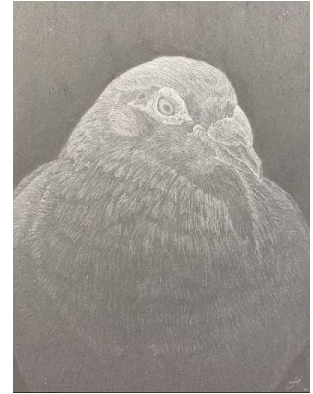
A huge **thank you to Kathie Miranda** for a phenomenal presentation and a memorable year end meeting.

Blossom on Black Paper



Kathie Miranda's Bio: Kathie Miranda is a contemporary multi-media artist and educator who exhibits regularly at the Spring Bull Gallery, Newport, RI; the Colored Pencil Society of America; the Connecticut Watercolor Society; and American Society of Botanical Artists (ASBA). Her passion is working in Old World art media - egg tempera + gilding and silverpoint - as well as traditional botanical art media - watercolor, colored pencil and graphite. An instructor and former coordinator of the art program at the New York Botanical Garden, she is past-president of the New York chapter of the Guild

of Natural Science Illustrators. Kathie leads art workshops around the USA, and locally at the Bartlett Arboretum, Stamford, CT. Her colored pencil work was awarded the Anne Marie Carney Award in recognition of outstanding work from the ASBA and First Place from the Spring Bull Gallery 'The Magic of Colored Pencil' exhibition.



Overview:

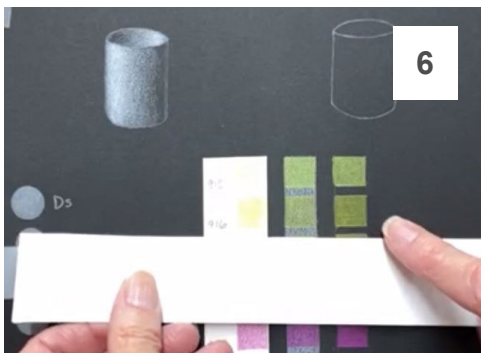
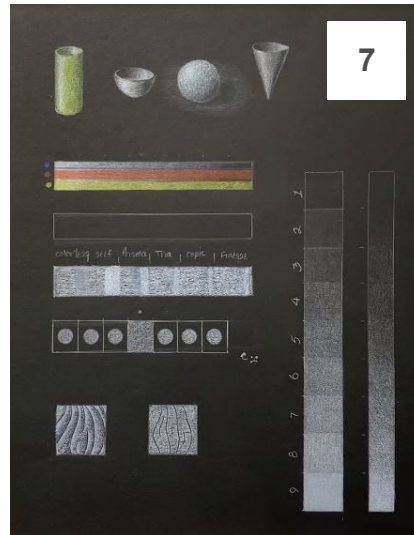
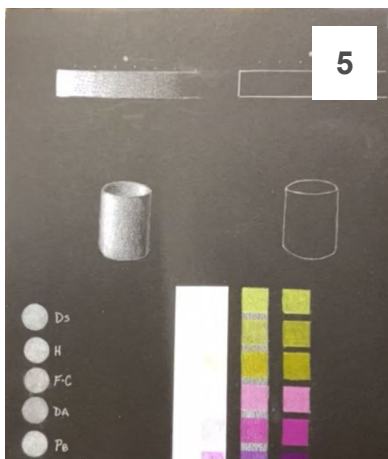
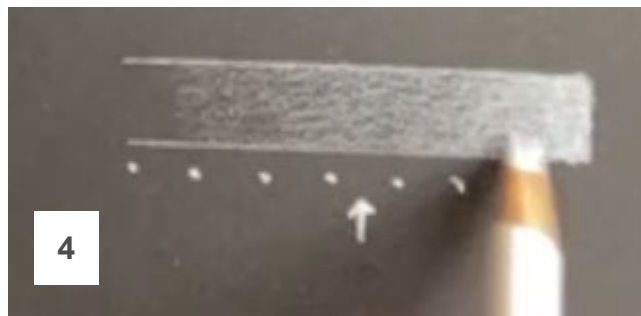
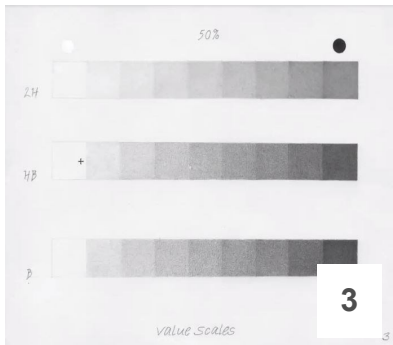
Samples include colored pencil, reflective graphite, silver point, scratchboard, linocut, color pencil powder, and ink wash with watercolor and colored pencil.

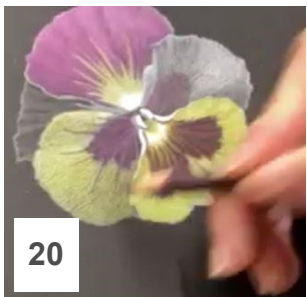
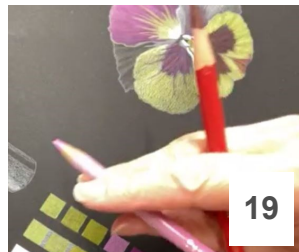
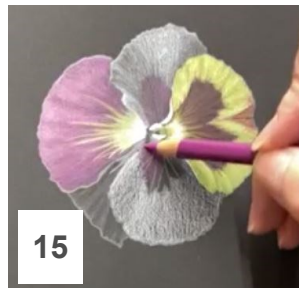
12



Value Study:

1. Pencil palette
2. Test on black paper
3. Value scale on white
4. Seven-point value scale on black. DaVinci could see 22 values.
5. Continue value scale, try a 3D shape.
6. Compare results.
7. On black start with lights, reverse of white paper. Color sits on top of value.
8. Color values, over white, black, & glaze
9. Compare color swatches

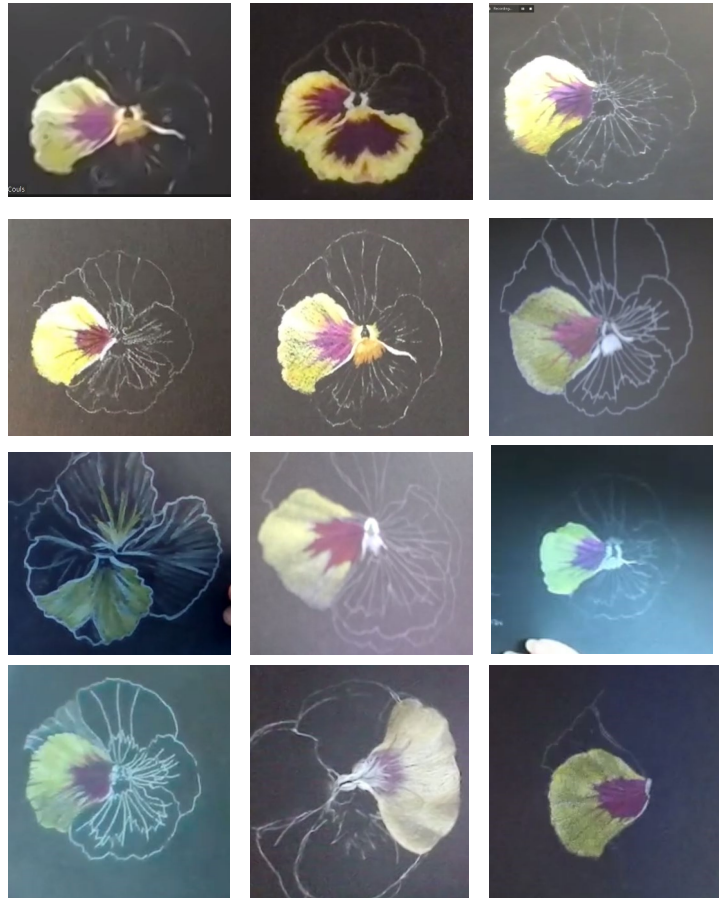




Steps:

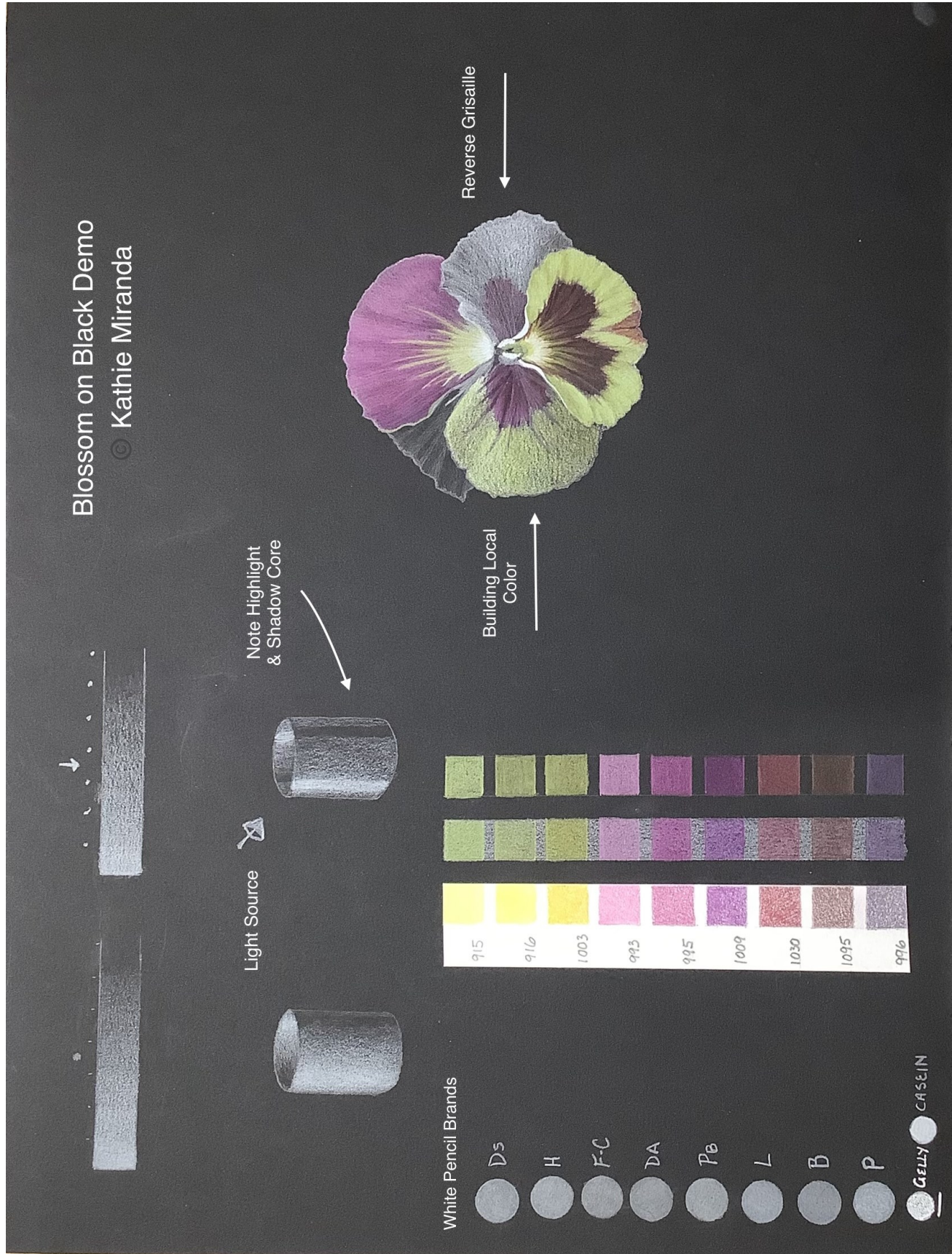
10. Reference photo
11. Work on one petal for demo
12. Glaze over where yellow will be
13. Note the topography of the petal
14. Then follow that on the petal
15. Glaze with Mulberry, as well as all the local colors
16. Glaze with Canary Yellow
17. Build layer with White
18. Black will show through but is impactful
19. Glaze with Hot Pink, Black Raspberry, Raspberry
20. Dark Violet for veins
21. White center

Shown below: Beverly, Catherine, Helene, Jane, Jo Ann, Judy, Kathi D, Kathy McL, Linda C, Linda D, Liz, Louise, Maddie, Mattea, Pam, Ruth, Sare, Susan.



Blossom on Black ~ Full Size Demo Sheet
Thank You, Kathie!

Blossom on Black Demo
 © Kathie Miranda



Reverse Grisaille

Building Local Color

Note Highlight & Shadow Core

Light Source

White Pencil Brands

- Ds
- H
- F-C
- DA
- Pb
- L
- B
- P
- GELLY
- CASEIN



Member Achievements

Congratulations! Robert Sena

"Nature" 2021 Art Exhibition

<https://www.lightspacetime.art/nature-2021-art.../>

"Galapagos Tortoise", Special Merit Award



"Barker Dam Reservoir", Special Merit Award



Member Achievements ... continued

And further recognition for **Robert Sena** ...

“**Robert Sena’s** drawing, **Wood Stork**, is featured in the Winter 2022 edition of **The Best of Drawing** magazine. Robert was selected as a **Finalist** in the **Strokes of Genius 13** competition featured in the magazine. On Canson Mi-Tientes paper, the colored pencil drawing is 10” x 12 1/2.” His reference photo was taken at Gatorland in Orlando, FL.”



Just Published

Two of our members had articles published in the most recent issue of the CPSA magazine, **To the Point**.

John Robak wrote “**Anatomy of a Drawing**,” pp. 33-35.

John Guiseppi, now a member of the Gainesville, FL chapter, authored “**Make It Shine! Chrome Metal and Reflections**,” pp. 60-63.

Have you received an award or recognition or were featured in an art exhibition? Please let us know! We want to share your good news. **Your achievements are an inspiration for others!**

2022 Call for Entries and Prospectus



30th Annual Colored Pencil Society of America International Exhibition

The CPSA International Exhibition is an annual juried gallery exhibition exclusively for works done in 100% colored pencil. It is held in a different city each year to provide more people the opportunity to enjoy colored pencil as a fine art medium. Awards include a \$5,000 Best of Show and CIPPY Award. In 2021, awards totaling \$19,525 were given to the 14 award winners.

As a special bonus in 2022, the CPSA International Exhibition will be on display at two different Florida galleries—one in the Tampa area (in conjunction with the annual CPSA convention) and the other in Ormond Beach on the Atlantic Coast. See page three for more information.

Important Dates

Entries Accepted Dec. 15, 2021–Mar. 31, 2022
Selected Artists Announced . . . May 1, 2022
Arrival Window for Artwork June 19–29
Award Winners Notified July 12–15
CPSA International Exhibition . July 11–November 15
 Dunedin Fine Art Center July 11–August 13
 Ormond Beach Art Museum Sept. 1–November 15
Artwork Return Shipping Departs week of Nov. 22

Annual CPSA Convention July 27–30, 2022

A separate PDF with information about attending the CPSA convention at the Safety Harbor Resort & Spa in Safety Harbor, Florida, will be available on the CPSA website at www.cpsa.org by February 15, 2022.

Convention registration opens March 1, 2022.



WHAT TO KNOW BEFORE YOU ENTER

Eligibility

The exhibition is open to living artists 18 years or older, regardless of geographic location. There is no preferential treatment for CPSA members versus non-members.

Entry Fee

Nonrefundable entry fee: CPSA members \$25 and non-members \$35. Fee covers one or two entries.

Deadline for Entries

11:59 p.m. (Mountain Time), March 31, 2022. Do not wait until the last minute.

Meeting Artwork Specifications

Selection of artwork by the juror does not guarantee artwork will appear in the show. Upon receipt of the accepted work at the gallery, a final review verifies that artwork meets execution and framing specifications (page 2) and is of the same quality depicted by digital image. Artwork determined at any time before, during, or after the exhibition to not meet specifications will be disqualified. Artwork **must** hang in the show to count toward signature status.

Your Commitment to Ship

By submitting an entry you are making a commitment to ship your artwork, if accepted, to the CPSA exhibition for the full duration of the event, including a second showing in Ormond Beach, Florida. Do not submit a piece that is not available for the full duration. Each work not sent deprives another artist of the opportunity to be in the exhibition.

Permission and Copyright

By submitting an entry, the Artist grants permission for CPSA to use the accepted image in its news magazine, *To The Point*, on its website at www.cpsa.org, for CPSA brochures and promotional materials, and in publicity about CPSA. Every effort will be made to maintain quality true to the submitted image. By entering, the Artist certifies that he or she holds the copyright for this material and the copyright remains with said Artist. CPSA will display a notice that material must not be “downloaded” or copied, but will not be held responsible if artwork is copied.

The Artist also certifies that the work submitted is original and does not infringe on any existing copyright. If artwork includes image of any identifiable person, Artist certifies that a model release for such person has been obtained.

Classes Offered by Members

Bonnie Haney

Classes for **2022** to be announced when available (Online/Zoom): **Flower City Art Center**, flowercityarts.org/

Hanneke Jevons

Open Studio for colored pencil in my home on Wednesdays and Fridays from 2:00 to 4:00 PM. Space limited to 4 students. Please contact Hanneke at: hannoart@bellsouth.net

Pat Lentine

Colored Pencil and Pastel Artists: If you would like some input on your projects please join us in our online Zoom class. Each student brings to class a project they want to start or have started. Individual input on each project with each student. Class limited to 10 students. Wednesday 1:00 - 3:00 East. You can sign up each week via my website www.patlentine.com/ or contact Pat at: pat@patlentine.com and 407-758-4437

Kathie Miranda

Other classes for **2022** will be announced as available.

Bartlett Arboretum Botanical Art Club: In-person. Create a series of work from a yearlong survey of the Bartlett's plants. Monthly (ongoing), 1st Saturdays, 10:00-3:00 EST.

Plant Portraits in Winter: Online/Zoom. Bringing winter flowers and plants indoors provides a timeless element that adds sparkle to a long, chilly winter. 6-weeks from Dec 9 to Jan 20, 2022, Thursdays, 10:00-1:00 EST.

Details at <http://www.bartlettarboretum.org/events-concerts> .

Liz Monaco

River House (St.John's Co. Council on Aging, coastjc.org) ~ Colored Pencil, Wednesdays 1:30 to 3:30 (179 Marine Street, St. Augustine)

Kathi Darby

Coming up in 2022 at the **Ormond.Art Museum**; details to follow.

If you are offering instruction, please let us know so your information can be included in future issues.

It's Not Too Late to Renew or Join!

The new year started **November 1**. But, if you forgot to renew or join, it's never too late ~ ***you are always welcome here!***

- * The most efficient way to renew your **National** membership is to go to the website cpsa.org and renew online. Quick and easy. However, as a courtesy, we are including the National mail-in form below.
- * For the **Chapter**, go to our website cpsa117.org and go to the **Membership** page, where you will find an online form. Then to the **Store** page to pay the \$20. However, should you have any difficulties, simply let us know and we will get you signed up (cpsa117staug@gmail.com). **Thank you!**

CPSA Mail-in Membership Form



2022 Membership Year: November 1, 2021, to October 31, 2022

Save time!
Renew online at
www.cpsa.org/membership

Or make check* payable to **CPSA**
and mail with completed form to:
Membership Director
Colored Pencil Society of America
4157 Mountain Rd #122
Pasadena, MD 21122-4455

PRINT CLEARLY. Enter information exactly as you wish it to appear in the CPSA directory.

First Name (if desired, you may also add middle name or initial)		Last Name (for alphabetizing purposes)	
Street Address or PO Box			
City		State/Prov.	Zip/Postal Code
<input type="checkbox"/> United States <input type="checkbox"/> Canada <input type="checkbox"/> Other Country: _____			
Primary Phone ()		Alternate Phone (if available) ()	
Primary Email Address			
Alternate Email Address (if available) in case we can't reach you at your primary email			
Your Personal Art Website (if applicable) for inclusion in the "Websites of Members" listing on the CPSA website			
<input type="checkbox"/> I regularly teach colored pencil classes or workshops and would like to be included on a CPSA list of instructors. (CPSA will list your art website as how to contact you.)			

Please check and complete all applicable items:

- I am a new, first-time member. I first learned about CPSA from:
- Internet search
 - CPSA Member
 - Facebook
 - Art instructor: _____
 - Magazine ad: _____
 - Other: _____
- I am renewing from the 2021 membership year
- I am rejoining after a lapse in membership
- I am a member of or will be joining this local CPSA district chapter (number or city): _____

Membership Payment

One-Year Dues (Applicable year-round without proration)

- \$45 U.S. and Canada (U.S. Funds)
- \$65 All Other Countries (U.S. Funds)

Ten-Year Membership Option (U.S. only)

- \$400 membership through October 2031

We welcome donations. Amounts in excess of dues will be considered a donation, and used for CPSA general operating expenses.

Membership Renewal Deadlines

Renew by **October 31, 2021**, to continue your membership benefits without interruption. After **December 31, 2021**, members who have not renewed for the 2022 membership year will forfeit any **Signature and/or Charter status and CPSA show acceptances** counting toward Signature or Merit status.

Note to U.S. Members About Mailings

CPSA twice-yearly *To The Point* magazines (November and May) go by bulk mail to the address you enter on this form. If you will be away from the address listed above for an extended period over May or November, please arrange for bulk mail to be collected, held, or forwarded to you. Check with your local post office for available options.

CPSA Directory Listings

All members of record as of December 31, 2021, will be listed in the directory published in January 2022. The 2022 membership directory will be available only as a PDF file. Members will be notified by email when it is available for download. Listings include member name, street/PO Box, city, state/province, country, phone, and email, as provided. CPSA prohibits use of member information for promotional purposes without authorization from the CPSA national governing board. For a partial listing, check the box below.

- I want a partial directory listing (name, city, state, country only)
(Note: checking this box will make it difficult for other CPSA members to contact you.)

*CPSA charges a non-waiverable \$12 returned check fee for any check that is returned to us by your bank for any reason.

7/15/21

Our Board Members

CPSA-DC 117

President:

Linda Doup

Vice President:

Pat Lentine

Secretary:

Kathy Viehe

Treasurer:

Judy Madigan

Membership:

Kathi Darby

Newsletter/Website:

AJ Barr

Historian:

Kathy Viehe

Publicity:

Jo Ann Eurell

President Emeritus:

Hanneke Jevons

President Emeritus:

Bill Shoemaker

CPSA remains firmly dedicated to the fundamental principles of inclusion and diversity, and to racial justice as an inalienable human right.

Newsletter Contact Info:

For submissions and requests to be profiled, please contact either AJ or Linda.

AJ 386-283-2433

cpsa117staug@gmail.com

Linda 386-295-0486

lindadoup@att.net

Membership Information

Chapter Membership Benefits:

- Networking with other colored pencil artists
- Participation in sketch groups
- Member discount rate for local workshops
- Chapter newsletter
- Opportunities for exhibits and event participation

A member of the local CPSA DC117 St. Augustine Chapter must also be a member of the Colored Pencil Society of America.

The benefits of CPSA membership are worth it:

- A national newsletter, To The Point, twice yearly.
- Product research, pigment identification, lightfast information
- Lower entry fee for annual CPSA exhibitions
- Lower rate for workshops at CPSA Convention
- International membership networking directory
- District Chapters for local and regional networking
- Free link to your website
- Ability to earn Signature status
- NOTE: Only CPSA members who have attained Signature Status may use the initials CPSA or CPX after their name.



MEMBERSHIP APPLICATION

New Membership Renewal

Check if you have paid CPSA National

NAME: _____

ADDRESS: _____

CITY: _____ STATE: _____

ZIP CODE: _____

EMAIL: (Please print) _____

PHONE(s): _____ (Home) _____ (Cell)

- Annual chapter dues are **\$20**.
- Membership year runs from November 1st to October 31st.
- Applications for CPSA National can be obtained through the website: www.cpsa.org

GO TO THE WEBSITE cpsa117.org/membership to complete the online form.

Then to the Store page to complete the payment. Thank you!