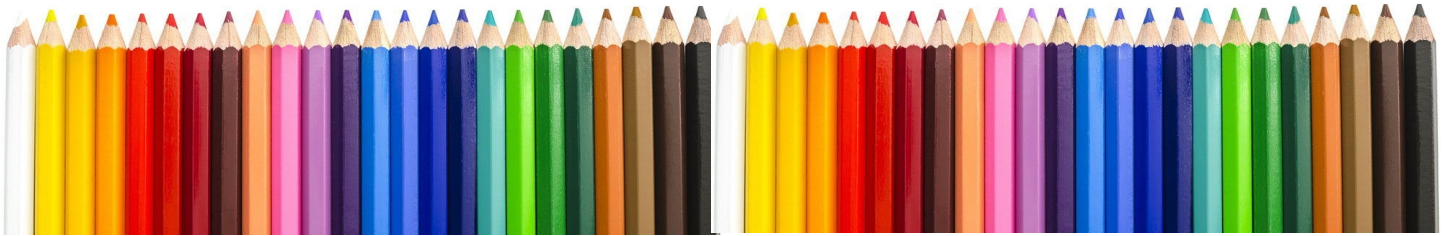


# Pressing the Point

April 2021

**CPSA**  
Colored Pencil Society of America

District Chapter 117 | St. Augustine FL



**We meet on the 3<sup>rd</sup> Sunday of each month at 1:00 PM (except July & August).**  
***Please check the website for any scheduling changes.*** [www.cpsa117.org](http://www.cpsa117.org)

**CPSA**  
Colored Pencil Society of America  
District Chapter 117 | St. Augustine FL



Bosley's Bliss by Kathy Viehe

## Subtraction Method with Colored Pencil

**Sunday, April 18, 2021, 1:00 PM**

Kathy Viehe will present our April program on the Subtraction Method which she learned from several different artists. She happened upon a colored pencil podcast interview with Tracy Fein who went into detail about the technique which he originated. She was also inspired by work done by our member, Hanneke Jevons, CPSA. The subtraction method is worked by applying black colored pencil onto drafting film. Then the pencil is carefully subtracted with an eraser to achieve desired values.

NOTE: Allow sufficient time to prepare your drafting film before this lesson if you want to "subtract along" with Kathy. See the supply list for needed supplies and preparation instructions. Kathy will supply a sheet of drafting film to members if you need one to try the technique. Contact her at 352-214-8251 before April 12th.

Don't forget to submit your 2021 Challenge work (scratchboard) for March to AJ or Pat before the meeting.

Details and supply list follow—keep reading!

Created Collaborated Celebrated  
Flagler County Art League  
Presents  
A Virtual Colored Pencil Art Show

**March 20 through April 17, 2021**

**CPSA**  
Colored Pencil Society of America  
District Chapter 117 | St. Augustine FL

**Member's Show**

View online

[www.flaglercountyartleague.org](http://www.flaglercountyartleague.org)



[Member Show  
Comments](#)

[February  
Challenge Entries](#)

[April  
Meeting](#)

[March  
Recap](#)

[Subtraction  
Supply List](#)

[Member  
Awards](#)

[Classes](#)

## Chapter Meeting

**April** ~ hopefully bringing a more optimistic outlook for the future as flowers bloom and vaccinations abound. The Chapter meeting will be **April 18 at 1:00 pm via Zoom**. Here's what we will be doing:

- ◆ **Kathy Viehe** will be our presenter for “**Subtraction.**” If you have not tried this technique, you will be amazed at the results. The supply list was sent last month to every member and all guests. The work is done on drafting film, such as Dura-Lar. If possible, please have your film coated with a layer of black pencil or stick and apply an odorless solvent (i.e., Gamsol) prior to the meeting. Also included was a reference photo, however, you can use your own photo if you wish ([click here](#) for the supply list and reference photo). This is part of the **monthly challenge** program for this year
- ◆ Be sure to submit your **March** challenge photos (scratchboard) or be prepared to hold your piece up during the meeting. Sending in the photo does allow Pat to present a nice “slide” show with screen share. Send to either Pat (pat42@pme.com) or AJ (cpsa117staug@gmail.com).
- ◆ Of course, please have at hand your work in progress that you would like to share.

***Looking forward to seeing everyone at the meeting!***

### **Zoom Info:**

Remember, ***an email invitation will be sent to every member or guest with the link for the meeting.*** You will click on the link and then join in. Feel free to invite someone to attend with you ~ **all are welcome.**

To show your work, you can simply hold the piece up in front of your webcam. **OR**, you can email a photo of the piece to either **Pat Lentine** (pat42@me.com) or **AJ** (cpsa117staug@gmail.com) and we will display them for you.

Problems joining that day? Pat (407) 758-4437. Linda (386) 295-0486. AJ (386) 283-2433.

## March Meeting Recap

**Linda Doup**, President, welcomed our guests from other chapters and CPPG ~ your participation makes our meetings special. Linda also introduced Board members present.

**Pat Lentine** discussed the upcoming Chapter sponsored workshop with **Mark Menendez** on **July 16, 17, and 18** (Fri, Sat, Sun). Day 1 is a **color study**. Days 2 and 3 will be **portraits**. You may take both offerings, or just one or the other (Friday or Sat/Sun). **Color/Friday**: \$70 member, \$80 non-member. **Portraits/Sat-Sun**: \$100 member; \$125 non-member.

**Hanneke Jevons** presented the award results from the March Member virtual show. There were 72 entries and the show looked wonderful with a wide array of subject matter and styles. Congratulations to everyone who participated ~ and, of course, the award winners!

**Pat** presented the February wood submissions ([click here](#)).

For the program, and monthly challenge, **Hanneke Jevons** presented a scratchboard program which proved challenging as well as fun. Whether you were new to this technique or had previous experience, we all learned a lot ~ and shared a good bit, which always makes for a dynamic session.

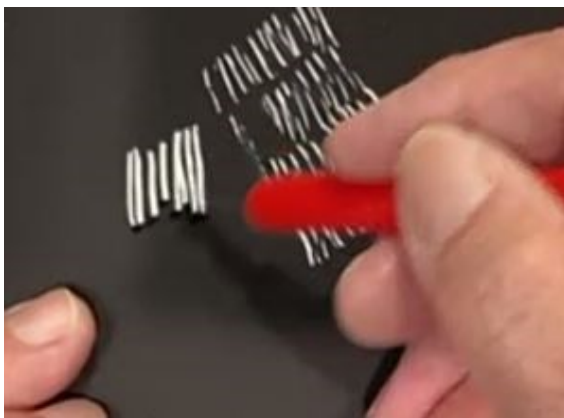
Hanneke walked us through all the tools and the scratchboard (or paper) itself. Then gave a demo on how to make the scratch marks and which tools to use to get the right results. We all transferred the reference photo to the scratchboard.

Hanneke proceeded to give a detailed demonstration; everyone had great results.

***Thank you, Hanneke, for the wonderful challenge!***

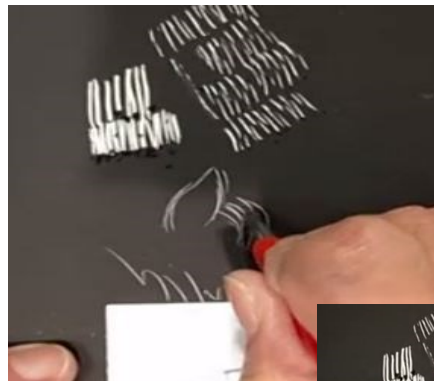
(Photos follow)

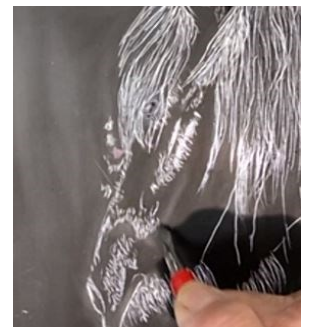
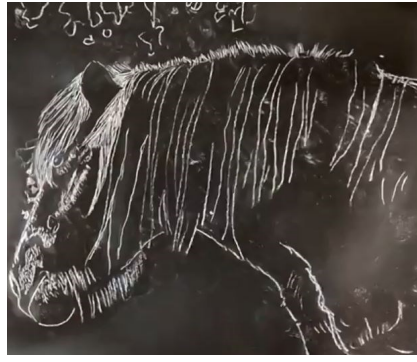
As before, **everyone** is invited to either submit a photo of your work or you can hold it up during the meeting. Both ways count as a submission for the **monthly challenge**. The one rule is your submission must have been done during and/or after the Chapter meeting (no previously done work). Entry must be submitted the Saturday before the Chapter meeting. Completing each challenge this year makes you eligible for a drawing for a prize (to be determined). But, more importantly, it will serve to strengthen your own skill set as you move forward with your colored pencil endeavors.



## Steps

1. Review your tool set..
2. Test the different points to understand the effects.
3. The “heart” point is a favorite.
4. Trace the reference photo onto the scratchboard with white transfer paper.
5. Start to scratch over the tracing lines.
6. Turn the piece for the best angle to make the scratches.
7. Use a kneaded eraser to clean up tracing and other smudge marks..
8. Use a Sharpie or Micron pen to fix mistakes.
9. Can pull the white back out after fix.
10. Make fine lines close together to fill in the mane.
11. Slowly build up the lines, move the pen left to right.
12. Stipple on the face, light short strokes.
13. Use Micron pen for the eye.
14. Add color, for example, the foliage.
15. Experiment with other pencils.







Linda Bishop



Jo Ann Eurell



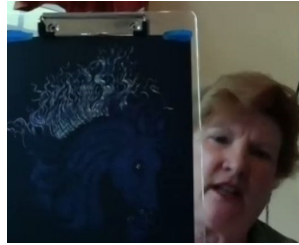
Judy Madigan



Liz Monaco



Beth Harper



Karen Zier



Kathi Darby



Kathy McLean



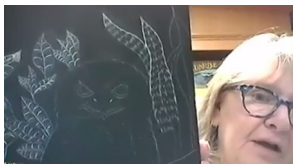
Kathy Viehe



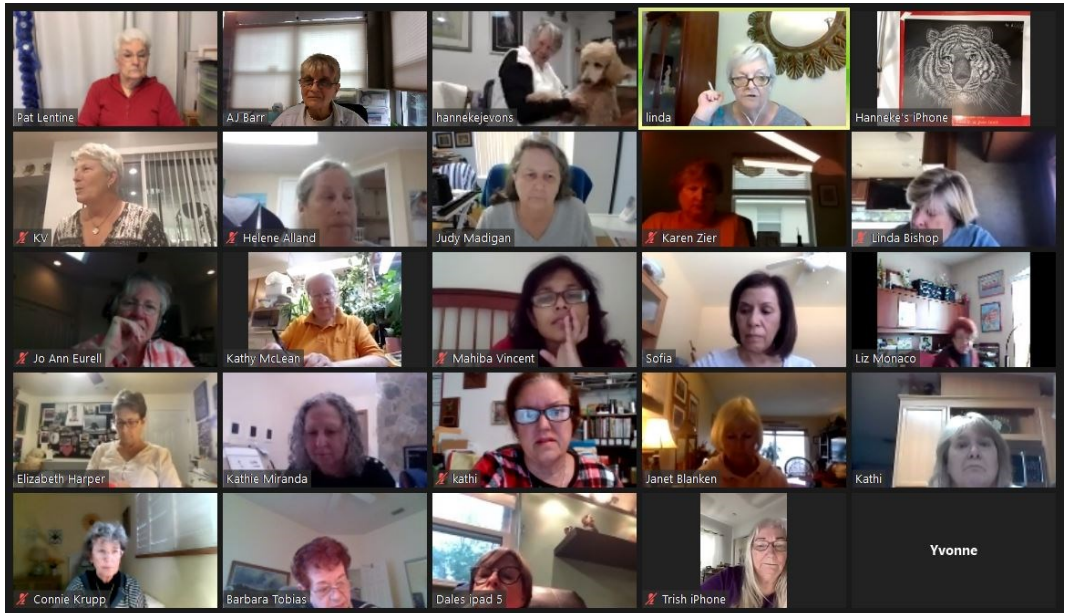
Linda Doup



Pat Lentine



Kathi Smith



Hanneke Jevons ~ "Tiger" and "Tippi"

AJ Barr

Apologies Kathie Miranda, picture was too light (on the black) to display



Judy Madigan



Kathi Smith



Kathi Darby



AJ Barr



Sofia Kostopoulos



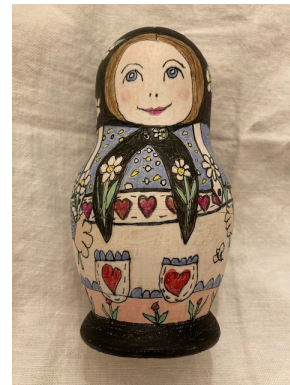
Jo Ann Eurell



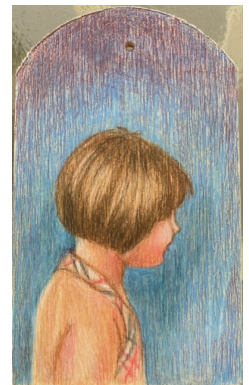
Linda Bishop



Beth Harper



Mattea Truppe



Pat Lentine



Kathie Miranda



Kathy Viehe

## Subtraction Method with Colored Pencil

### Description:

I heard about this method from several colored pencil artists and was curious. I happened upon a Colored Pencil podcast interview with Tracy Fein in which he goes into detail about the subtraction method. I also saw some work by Hanneke Jevons. Just listening to the podcast gave me a better appreciation for tone and value and made me want to try subtraction. You put the pencil on first and then you take the pencil off - subtracting with an eraser and then filling in spots on the front and back of the drafting film to get the values you want. There is a little upfront work involved to prepare for subtraction.

### What you will need:

- Graftex Matte .005 Dura-Lar Film two-sided drafting film. (I tried thinner sheet and it doesn't work well).
- Black Prismacolor colored pencil. Some colored pencils don't work great on drafting film. I have found that Prismacolor works well. If you have a black Prismacolor Art Stix, so much the better. Your process will go a bit faster.
- Verathin Prismacolor colored pencils: Black, Cool Grey 10% and white (Verathin's work best for the detail work). You can use regular Prismacolor Pencils, but it is a bit more difficult for fine detail.
- Col-erase black colored pencil (not a must)
- Turpenoid (this brand breaks down the wax without leaving an oily residue).
- Spray bottle for applying Turpenoid.
- Small soft paint brush (something that won't leave big marks)
- Tombow Mono Zero eraser, 2.3 mm round
- Kneaded Eraser
- Mr. Clean Magic Eraser
- White paper or foam core to use underneath the drafting film (this helps see the values better). Foam core give you a good service to work on as well.
- Tape - painters or art



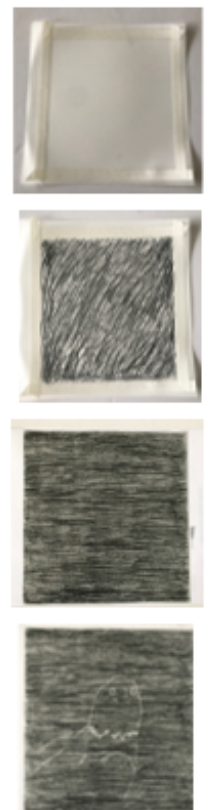
### DO AHEAD:

**Step 1)** Prepare your drafting film by determining the area in which you will draw (I tape mine off) and then put a nice even coat of black colored pencil in that area. Or you can simply cut the drafting film a bit larger than your image and coat the entire piece of film (below).

**Step 2)** Use your black Prismacolor Pencil or the Stix to apply color over the entire area. I don't think you can go too dark, but I do think you can go too light.

**Step 3)** Apply Turpenoid from a spray bottle and lightly spritz over the black area. Then using your soft brush, lightly brush the black area trying to keep it smooth and even. It's ok if you have some brush strokes as you can work these into your art but try to minimize big chunky spots. Allow to dry for several hours. You can also dry it with a hair dryer.

**Step 4)** Once your surface is dry, you will then transfer your image onto the surface. Place the reference photo underneath and use your Tombow eraser to trace the outline. You can either use a light table, window or create your own transfer paper and transfer the image to the FRONT of the film (on top of the black).



(Continued on page 4)



**Reference Photo for Subtraction ~ or you may use your own photo**



**Colored Pencil Society of America District Chapter 117  
Member's Virtual Show Award Winners and Judge's Comments  
March 20, 2021**

**Advanced Artist Category**

**First Place #112 “King Lear” by Mark Menendez:** King Lear captured my attention immediately with the dramatic lighting and engaging gaze of the character. The figure emerges from the dark background, commanding the viewer's attention. The detail of the costume is both interesting and helps communicate the story of time and place. The detail delights the eye and leads you throughout the composition, yet the eyes keep drawing you back to the face.

**Second Place #140 “Look at Me” by Becky Busch:** Look at Me is a splendid example of how powerful colored pencil art can be. The masterful use of color intensity grabs the viewer and takes them to a place where color is the dominant element. The cropped composition allows the viewer to see the magnificent complexity of the overlapping feathers for which peacocks are famous.

**Third Place #101 “65 Mustang” by John Guiseppi:** You do not have to be a car buff to enjoy the masterful rendering of this historical vehicle in 65 Mustang. The repetition of circular shapes of varying sizes gives the composition unity and variety. The colorful reflections in the metal delight the eye!

**Honorable Mention 1 #151 “Under the Sprinkler” by Pat Lentine:** Under the Sprinkler is a delightful piece that captures a fun moment that many of us have experienced. It is always nice to see a portrait that is creative and fun. There is great depth in this piece as you look through the rain to the little girl and even further back to the blurry background.

**Honorable Mention 2 #128 “It's All Connected!” by Helen Alland:** It's All Connected impressed me with the rendering of the rusted interlocking chain that is totally believable. The neutral palette works beautifully in capturing the corroding metal as we can appreciate the blue and yellow accents.

**Honorable Mention 3 #122 “At the End of the Day” by Dale Whaley:** At the End of the Day is a piece that is very relatable to a colored pencil artist. It is amazing how many pencils we go through as we grind away at our drawings. It is an artist's eye that can see the beauty in our instrument and this one is portrayed so well. The complexity of the pencils overlapping each other is truly mind-boggling!

**Emerging Artist Category**

**First Place #165 “Potential” by Mahiba Vincent:** Potential is a wonderful illustration with a great message to the viewer. The composition and lighting set the stage for the story to be told. The mirror's frame draws attention to the reflection of the pawn wearing a crown. The consistent rendering of light and shadow creates a believable sense of reality. This artist has a great sense of humor too!

**Second Place #159 “Night Watch” by Elizabeth Harper:** Nightwatch is an example of excellent craftsmanship with colored pencil. The attention to detail of each feather should be commended. The rendering of the subject is clean and carefully executed with precise attention to proportion.

**Third Place #154 “Bosley’s Bliss” by Kathy Viehe:** Bosley’s Bliss is an adorable portrait of a dog. The artist has captured the wet eyes and nose of this pet with love. The playful personality comes across in this black and white work of art.

**Honorable Mention 1 #168 “Bella” by AJ Barr:** Bella is a portrait with outstanding proportions. The color of the paper is allowed to peek through the skin tones keeping the subtle coloration like a pastel drawing.

**Honorable Mention 2 #116 “Ancient Life Form” by Lorraine Swann:** Ancient Life Form is an excellent illustration demonstrating good craftsmanship. The form is blended well with subtle colorations and sophisticated technique.

**Honorable Mention 3 #172 “Dudley” by Katherine McLean:** Dudley is a portrait that exudes character! The joyful use of color and expression captured in this dog’s face made me smile. When an artist can evoke an emotional response from a work of art, you know you have that special something!

### Comments About the Overall Show

This show was a delight to judge. The range of subjects and style was a true showcase of the depth and breadth of the colored pencil medium. Composition and technique are being practiced by this group of artists and a thorough knowledge of color and form are keys to success. Although many more pieces could be mentioned, I am happy that the group allowed me to give so many awards.

Your Judge, Barbara Dahlstedt

### About the Judge

Barbara Dahlstedt has a BFA degree from Arizona State University and has taught high school art for 26 years. Through teaching she discovered her love for the colored pencil medium. After joining the Colored Pencil Society of America in 2012, she has earned the CPSA and CPX signature status. In 2019, Barbara won the Best of Show award in their international competition. Now that she is retired from public education, she is focusing her attention on creating art and teaching online workshops.

First Place - Advanced



112 King Lear  
Mark Menendez, Advanced

Second Place - Advanced



140 Look At Me  
Becky Busch, Advanced

Third Place - Advanced



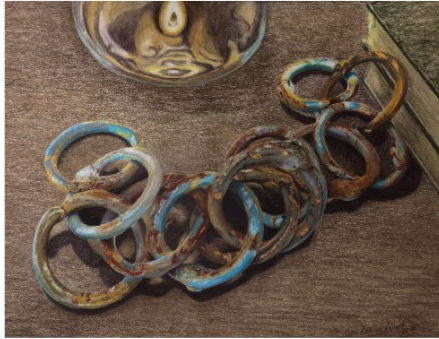
101 65 Mustang  
John Guiseppi, Advanced

Honorable Mention 1 - Advanced



151 Under the Sprinkler  
Pat Lentine, Advanced

Honorable Mention 2 - Advanced



128 It's All Connected!  
Helene Alland, Advanced

Honorable Mention 3 - Advanced



122 At The End Of The Day  
Dale Whaley, Advanced

First Place - Emerging



165 Potential  
Mahiba Vincent, Emerging

Second Place - Emerging



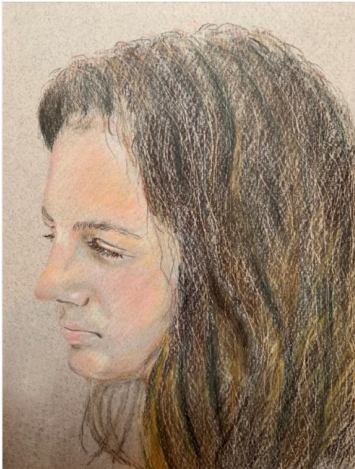
159 Night Watch  
Elizabeth Harper, Emerging

Third Place - Emerging



154 Bosley's Bliss  
Kathy Viehe, Emerging

Honorable Mention 1 - Emerging



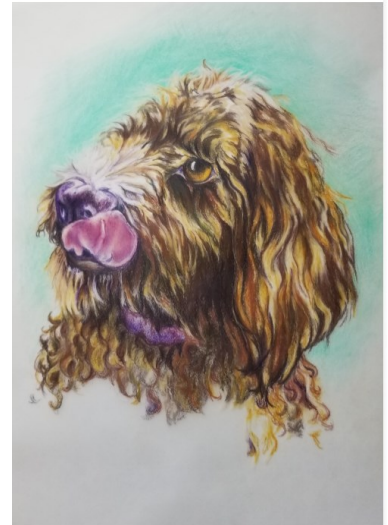
168 Bella  
Aj Barr, Emerging

Honorable Mention 2 - Emerging



116 Ancient Life Form  
Lorraine Swann, Emerging

Honorable Mention 3 - Emerging



172 Dudley  
Katherine McLean, Emerging

**Member Awards**

**Congratulations! Pat Lentine**

**Artist Workshop Members Show**

Everyday People Award

**“Soak Up the Sun”**

**Patricia Roettgen Lentine, CPSA-CPX**

Prismacolor colored pencils on UArt paper - 13”x8”

Pat’s personal reference photo



## Classes

### **Classes Offered by Members**

#### **Hanneke Jevons**

**Open Studio** for colored pencil in my home on Wednesdays and Fridays from 2:00 to 4:00 PM. Space limited to 4 students. Please contact Hanneke at:

[hannoart@bellsouth.net](mailto:hannoart@bellsouth.net)

#### **Pat Lentine**

**Colored Pencil and Pastel Artists:** If you would like some input on your projects please join us in our online Zoom class. Each student brings to class a project they want to start or have started. Individual input on each project with each student. Students benefit from discussion of their own pieces as well as for other student's projects.

Class limited to 10 students. Wednesday 1:00 - 3:00. Class fee \$10.00/session.

You can sign up each week via my website using this link

<https://www.patlentine.com/on-line-classes-1>

If you are new to Zoom or have questions, please contact Pat at:

[pat@patlentine.com](mailto:pat@patlentine.com) and 407-758-4437

#### **Kathi Darby ~ Flagler County Art League**

**Colored Pencil Series:** weekly, Monday afternoons, 1:30 to 4:00 pm

\$20/per week members, \$30/per week future members

#### **Liz Monaco ~ Flagler County Art League**

**Beginning Drawing Series:** Jan 21 thru Feb 25 (Thurs), 9:30 to 11:30 am

\$120 members, \$180 future members

**Pet Portraits Series:** Feb 4 thru Feb 25 (Thurs), 1:30 to 3:30 pm

\$80 members, \$120 future members

**Intermediate Drawing Series:** Mar 4 thru Mar 25 (Thurs), 1:30 to 3:30 pm

\$80 members, \$120 future members

If you are offering instruction, please let us know so your information can be included in future issues.

## Our Board Members

CPSA-DC 117

**President:**

Linda Doup

**Vice President:**

Pat Lentine

**Secretary:**

Kathy Viehe

**Treasurer:**

Judy Madigan

**Membership:**

Kathi Darby

**Newsletter/Website:**

AJ Barr

**Historian:**

Kathy Viehe

**Publicity:**

Jo Ann Eurell

**President Emeritus:**

Hanneke Jevons

**President Emeritus:**

Bill Shoemaker

## Membership Information

**Chapter Membership Benefits:**

- Networking with other colored pencil artists
- Participation in sketch groups
- Member discount rate for local workshops
- Chapter newsletter
- Opportunities for exhibits and event participation

*A member of the local CPSA DC117 St. Augustine Chapter must also be a member of the Colored Pencil Society of America.*

**The benefits of CPSA membership are worth it:**

- A national newsletter, To The Point, twice yearly.
- Product research, pigment identification, lightfast information
- Lower entry fee for annual CPSA exhibitions
- Lower rate for workshops at CPSA Convention
- International membership networking directory
- District Chapters for local and regional networking
- Free link to your website
- Ability to earn Signature status
- NOTE: Only CPSA members who have attained Signature Status may use the initials CPSA or CPX after their name.

CPSA remains firmly dedicated to the fundamental principles of inclusion and diversity, and to racial justice as an inalienable human right.

**Newsletter Contact Info:**

For submissions and requests to be profiled, please contact either AJ or Linda.

**AJ** 386-283-2433  
msajbarr@earthlink.net

**Linda** 386-295-0486  
lindadoup@att.net

### MEMBERSHIP APPLICATION DISTRICT CHAPTER 117 – ST. AUGUSTINE

New Member    or     Renewal

Check if you have paid your CPSA National dues

NAME: \_\_\_\_\_

ADDRESS: \_\_\_\_\_

CITY: \_\_\_\_\_

STATE: \_\_\_\_\_ ZIP CODE: \_\_\_\_\_

EMAIL: \_\_\_\_\_

PHONES(S): \_\_\_\_\_

Annual chapter dues are **\$20**. The membership year runs from November 1<sup>st</sup> to October 31<sup>st</sup>.

Checks made out to: **CPSA-DC117 St. Augustine**

Mail to: Kathi Darby  
13 Bleau Court  
Palm Coast, FL 32137