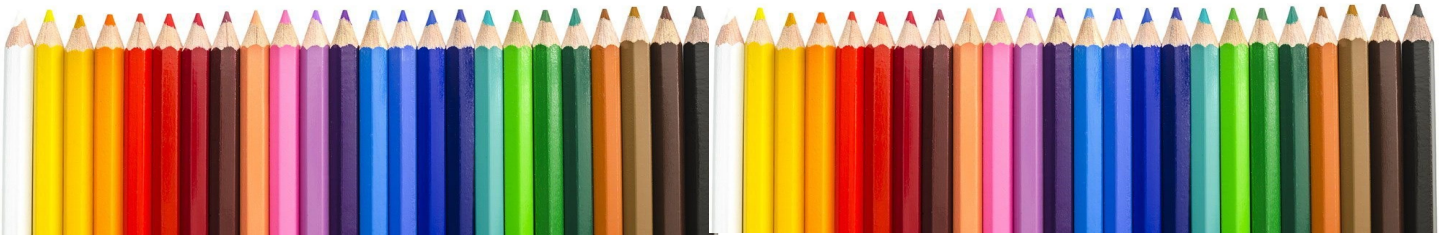


Pressing the Point

September-Mini 2022

CPSA
Colored Pencil Society of America

District Chapter 117 | St. Augustine FL



We meet on the 3rd Sunday of each month at 1:00 PM (except July & August).
Please check the website for any scheduling changes. www.cpsa117.org

CPSA
Colored Pencil Society of America
District Chapter 117 | St. Augustine FL

2022 CPSA - DC 117 Member Show

August 7 - September 17, 2022
Reception: August 7, 1:00-3:30PM



Florida Panther, Hanneke Jevons, CPSA



Golden Iris, Mark Menendez



Winter's Warm Glow, Pat Lentine, CPSA, CPX

Expressions Art Gallery on Colbert
Grand Living Realty Building
2298 Colbert Lane
Palm Coast, FL 32137

Gallery Viewing: Monday-Saturday,
9:00AM-5:00PM

Gallery Contact: Jan Jackson (505) 688-3190

This mini-issue has photos of the CPSA-117 2022 Members Show starting with the show opening reception on August 7 and going through September 17. The artwork was displayed at Expressions Gallery in Palm Coast. The pieces of all members, including remote members, were also displayed on the website and on a monitor at the gallery.

The show was dedicated to the memory of **Bill Shoemaker**.

Section 1 ~ Bill's dedication. Section 2 ~ Opening reception.
Section 3 ~ The show entries.

CPSA-117 Member Show 2022

Our show this year is dedicated to the memory of **Bill Shoemaker** ~ Chapter Co-Founder, President Emeritus, friend and mentor. Bill passed away on December 17, 2020, a deeply felt loss for our members and for so many in the community and across the country.

Many of us were introduced to colored pencil by Bill many years ago. Bill was one of the most generous teachers we have ever known. He took a patient and genuine interest in every student. For those who were lucky enough to see his expansive portfolio, Bill's works of art are truly wonderful. While Bill had a wide interest in subject matter, he excelled at drawing wildlife and won many awards. Bill held a Signature status of **CPSA**, a special standing by CPSA National that recognized him as a highly successful and award-winning artist over many years. Bill found great joy in art and gladly shared that joy with everyone who met him. Lasting impressions of this unique individual? Gentle, generous, and compassionate towards others, always passionate about his art, but always desiring to share that passion.

Bill leaves a legacy not just in his artwork, but as someone who made a difference in the lives of so many, someone who can never be forgotten because he transformed those

lives forever. We also wish to extend our heartfelt thanks to **Karen Shoemaker** for allowing us to share the images below, some of Bill's favorite creations.

A closing thought, for now...

He who works with his hands is a laborer.

He who works with his hands and his mind is a crafter.

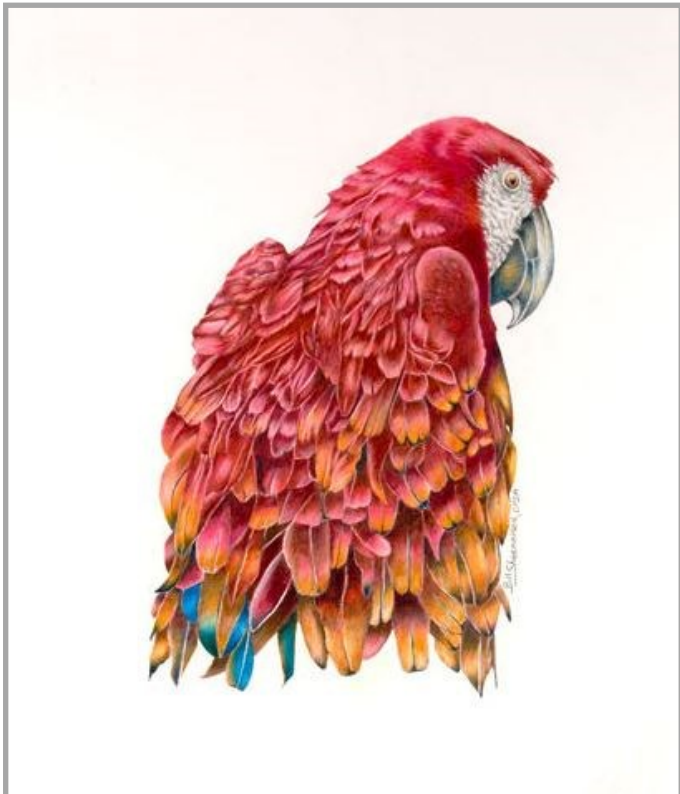
He who works with his hands and his mind and his heart is an artist.

St. Francis of Assisi



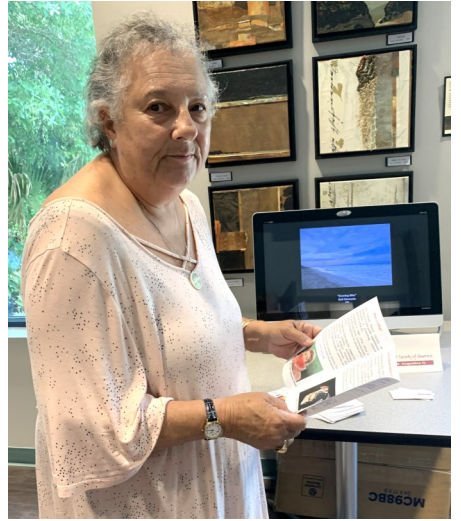
"You have been my mentor, my friend, my inspiration for seeing the beauty of the world around us. You have shared your love of colored pencils with so many people, your love of nature, of family, of everything that is good in this world. Your creativity and spirit will be with us forever. You are very loved! You will be greatly missed, Bill Shoemaker ... You are at peace now and when I see those beautiful rainbows in the sky, I know you are busy at work."

Dedication by Hanneke Jevons, Chapter Co-Founder

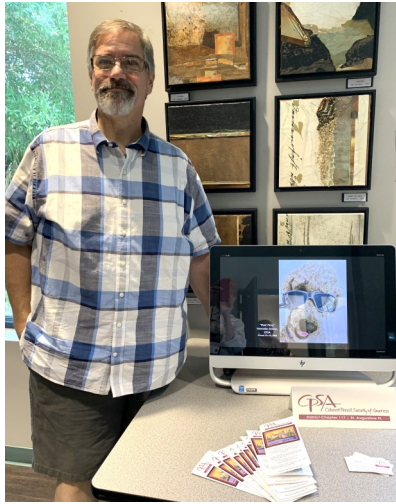


Opening Reception, August 7, 2022



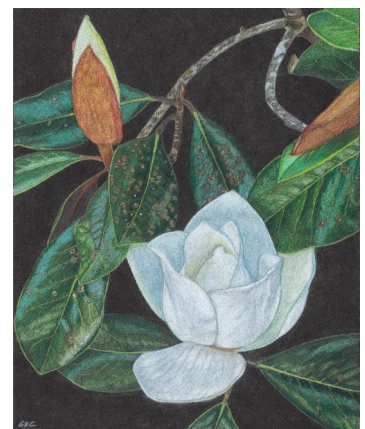
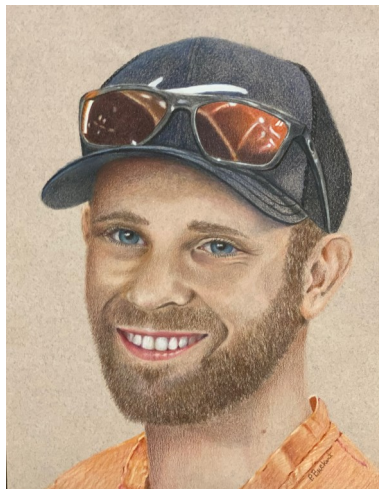
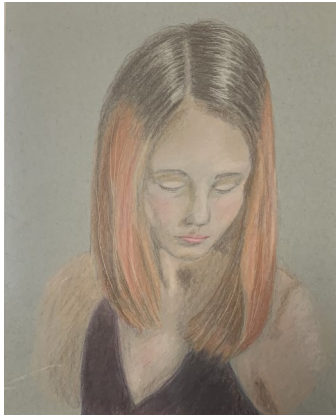




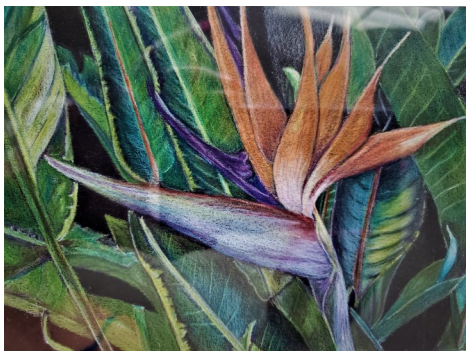
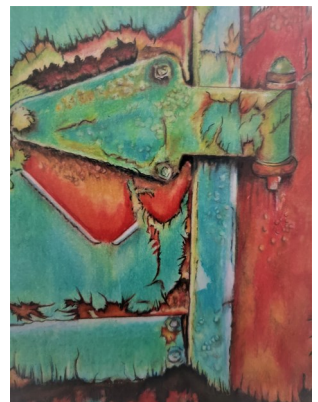




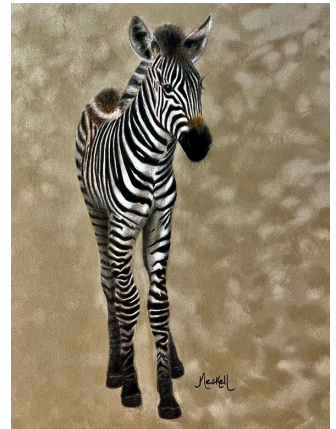
The CPSA-117 2022 Member Show Submissions



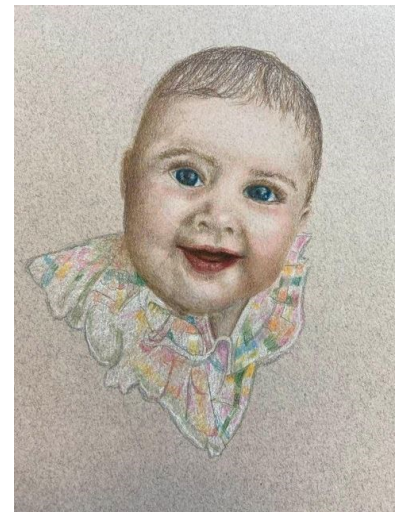
**Barr, Bishop, Bishop, Buckert, Buckert, Carrol,
Carrol, Cecio, Clements**



**Clements, Darby, Darby, Darby, Darby, Donald,
Donald, Doup, Doup, Jevons**



**Jevons, Lentine, Lentine, Madigan, Madigan,
May, May, McLean, Meskell**



**Meskell, Monaco, Monaco, Sena, Sena, Sena,
Stanley, Stanley, Truppe**



**Viehe, Viehe, Whaley, Whaley, Whaley,
Zier, Zier**

Announcing the 2022 CPSA-DC 117 Member Show
Opening August 7 through September 17

1) Important Dates

- **Registration CLOSES JULY 24** (for all submissions regardless if the pieces are going to be displayed at the gallery or online). Note, we must keep this deadline due to the CPSA National convention and our travel dates.
- **Gallery drop off Wednesday, August 3** (hours TBD)
- **Opening reception Sunday, August 7**, 1:00 - 3:30 PM (address below).
- **Gallery pick up September 18** (hours TBD).

2) Display Note

To ensure that all our members, regardless of location, will have their pieces displayed, the show will be both at the gallery **AND** online. Also, all pieces will be shown on a monitor at the gallery itself.

3) How to Register

- Very simple - just respond to this email - cpsa117staug@gmail.com
- Limit - 2 entries per member.
- Photo - 5 MB or less, do not include the framing if any.
- For all photos, include the title and the sale price or NFS.
- If you are local to Palm Coast, also include the framed dimensions AND, if you submit two, which one has priority to be shown at the gallery (as space is limited).

4) Prospectus Info

- Artwork must have been completed within the last 5 years.
- You may follow either the CPSA International **or** Explore This standards.
- In either case, the artwork must be solely the original concept, design, and execution of the submitting artist.
- **International:** Media must be 100% colored pencil on a manufacturer prepared surface (scratchboard not allowed). You may use solvents. Artwork must be 2-dimensional. Artwork may not be produced by applying colored pencil over a printed or digitally produced image.
- **Explore This:** Entries must be predominantly colored pencil and include one or more of the following: ink, watercolor, pastel, acrylics, etc. Can be a collage. Can be on an artist-prepared surface or a 3-dimensional surface. And any other technique, surface, or element that is NOT allowed for the CPSA International Exhibition.

5) Gallery Requirements

- Drop off your piece(s) on **Wednesday, August 3** (hours will be announced).
- **Framing** - you do not have to follow the CPSA standards, however, it is always better to keep framing simple in design (not ornate, 3-D, or painted).
- Artwork must be ready to hang by **wire** — no saw tooth hangers. No “clip on” frames.
- Outside frame **dimensions** may not exceed 32 x 40 inches (in either orientation).
- You may use **mats** of your choice; however, artwork usually shows best with neutral colors (shades of white, off-white, beige, gray, or black).

6) Gallery Address

Expressions Art Gallery

Located in the Grand Living Realty building
2298 Colbert Lane
Palm Coast, FL 32137

Our Board Members

CPSA-DC 117

President:

Linda Doup

Vice President:

Pat Lentine

Secretary:

Kathy Viehe

Treasurer:

Judy Madigan

Membership:

Kathi Darby

Newsletter/Website:

AJ Barr

Historian:

Kathy Viehe

Publicity:

Jo Ann Eurell

President Emeritus:

Hanneke Jevons

Membership Information

Chapter Membership Benefits:

- Networking with other colored pencil artists
- Participation in sketch groups
- Member discount rate for local workshops
- Chapter newsletter
- Opportunities for exhibits and event participation

A member of the local CPSA DC117 St. Augustine Chapter must also be a member of the Colored Pencil Society of America.

The benefits of CPSA membership are worth it:

- A national newsletter, To The Point, twice yearly.
- Product research, pigment identification, lightfast information
- Lower entry fee for annual CPSA exhibitions
- Lower rate for workshops at CPSA Convention
- International membership networking directory
- District Chapters for local and regional networking
- Free link to your website
- Ability to earn Signature status
- NOTE: Only CPSA members who have attained Signature Status may use the initials CPSA or CPX after their name.

CPSA remains firmly dedicated to the fundamental principles of inclusion and diversity, and to racial justice as an inalienable human right.

Newsletter Contact Info:

For submissions and requests to be profiled, please contact either AJ or Linda.

AJ 386-283-2433

cpsa117staug@gmail.com

Linda 386-295-0486

lindadou@att.net



MEMBERSHIP APPLICATION

New Membership Renewal

Check if you have paid CPSA National

NAME: _____

ADDRESS: _____

CITY: _____ STATE: _____

ZIP CODE: _____

EMAIL: (Please print) _____

PHONE(s): _____ (Home) _____ (Cell)

- Annual chapter dues are **\$20**.
- Membership year runs from November 1st to October 31st.
- Applications for CPSA National can be obtained through the website: www.cpsa.org

GO TO THE WEBSITE cpsa117.org/membership to complete the online form.

Then to the Store page to complete the payment. Thank you!