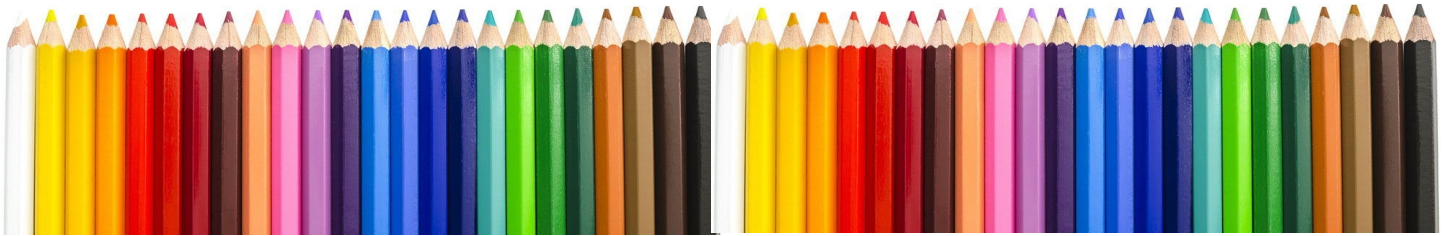


Pressing the Point

April-May 2022



District Chapter 117 | St. Augustine FL



We meet on the 3rd Sunday of each month at 1:00 PM (except July & August).
Please check the website for any scheduling changes. www.cpsa117.org



Winter's Warm Glow by Pat Lentine.



Pat Lentine's
Skin Tone Palette

**1:00 PM EST, Sunday, May 15, 2022
on Zoom**

Join us on Sunday for a demonstration of Pat Lentine's Skin Tone Palette. Pat will show you how she uses colors to achieve her beautiful skin tones. This is a demonstration only, but for your reference, some of the Prismacolors that she uses are: Burnt Ochre, Cream, Light Peach, White, Chocolate or Dark Brown, Peach, Yellow Ochre, Pink, Terra Cotta, Carmine Red, Pale Vermillion, Rosey Beige, Clay Rose, and a Medium- to Light Blue. Don't miss a great demo!

Members will receive an email with the Zoom link prior to the meeting. If you are not a member of CPSA DC 117 and would like to join us for our meeting, please email cpsa117staug@gmail.com so we can send you an invitation for the meeting. Deadline for registering is Saturday, May 14th. Non-members are allowed to attend up to three meetings before becoming a member of our chapter.

Welcome New Member

Joanne Bennett

We are delighted that you
joined our Chapter.

Thank you for your support.

Mark Menendez

Please keep Mark in your
thoughts as he recovers from a
heart transplant on May 7.

Mark (and Cathy) are not just
part of this chapter, but a valued
friend and mentor to thousands
across the country.

Visit his website to keep informed and
send a get-well message ([https://
www.menendezartstudio.com/](https://www.menendezartstudio.com/))

Please click the links or just scroll
through the newsletter to see all the
news!

[We Need You!](#)

[Renewal Info](#)

[May Meeting](#)

[March Recap](#)

[Member Achievements](#)

[CPSA National](#)

[Classes](#)

Chapter Meeting

May ~ Brings flowers and so much more to draw!

Hopefully, you are enjoying a wonderful spring, although there are a few weather hot-spots around the country. Floridians are having pleasant weather, but it's warming up and hurricane season is about to start.

- ♦ **Program** ~ **Pat Lentine** will be giving a demonstration on skin tones. Pat is a master of skin, having done many portraits ~ and winning awards doing so, as well. Although primarily a demo, you may wish to draw along ~ see the pencil list on the meeting announcement.
- ♦ **Challenge Update** ~ The current challenge is “**Black Paper**,” an original composition, any subject, but utilizing black paper. The due date is the June meeting. As before, a drawing will be held at year end for a gift card award, as well as a second piece being judged and awarded. Please note, although everyone is invited to participate, only **members** are eligible to win the awards.

Entries will be posted on the website [cpsa117.org/Challenge 2022/](https://cpsa117.org/Challenge%202022/). Submit entries to cpsa117staug@gmail.com.

- **2022 Member Exhibit** ~ Details for the August 2022 Member Exhibit will be announced again. This will be both an in-gallery and online exhibit for all members regardless of location.
- ♦ **Convention** ~ There will be a follow up to see if there are any problems in getting registered for the July 2022 CPSA National Convention in Tampa, Florida.

We look forward to seeing everyone soon!!

Challenge Note: **Everyone** is invited to submit a photo of your work. The one rule is that your submission must have been done during and/or after the announcement (no prior work). Completing each challenge this year makes all **members** eligible for a drawing for a prize (gift card). But, more importantly, it will serve to strengthen your own skill set as you move forward with your colored pencil endeavors.

Zoom Info:

Remember, ***an email invitation will be sent to every member or guest with the link for the meeting.*** You will click on the link and then join in. Feel free to invite someone to attend with you ~ **all are welcome.**

To show your work, you can simply hold the piece up in front of your webcam. **OR**, you can email a photo of the piece to **AJ** (cpsa117staug@gmail.com) and we will display them for you. Problems joining that day? AJ (386) 283-2433.

We Need You!

CPSA-117 is 63 members strong!

The opportunities to participate and share are boundless...

Last newsletter and at the March meeting, an appeal was made to have members step forward to share their talents and expertise. Our membership represents a wealth abilities and a passion for creative endeavors. We need to tap into that reservoir of artistic gifts.

This is an **artists' call for you** to share your knowledge and expertise, whether a beginner or expert, we can always learn from each other. Here are some areas where you can shine ...

1) Would you like to lead a **demonstration** or give instruction on a **project** at a chapter meeting? Don't worry, we will help you with practice sessions and tech support.

2) Is there a hidden **journalist** within? We would love to have several individuals contribute to the **newsletter** on either a regular basis (a favorite topic, a monthly "column") or just occasionally with something that you have tried or researched (pencils, tools, paper, books, etc.).

3) Perhaps you are of a social mind ~ would you like to **facilitate** an online (Zoom) **virtual studio**? Can be any day or time, but a place for those who would like to collaborate and support our pencil community. You would utilize the chapter Zoom account and be given instruction and tech support, of course.

4) Would you like to spearhead a **chapter-wide pencil project** ~ as we did with the "Bridge" and "Clock" montages? Or a chapter publication? A wonderful way to interact with everyone.

Let's take advantage of what each of us has to offer with so many colored pencil artists and enthusiasts that have joined together from across the country. Please email your interests and suggestions: cpsa117staug@gmail.com ***We need YOU !!***

March Meeting Recap

Linda Doup, President, welcomed everyone and introduced the Board members. There was a wonderful turnout of 40 attendees, including a special guest of Hanneke's, **Ineke Frederik from Holland!** What a wonderful surprise. Linda also discussed the upcoming CPSA National Convention and Exhibition, to take place the last week of July. The convention is being held in Tampa, Florida. While this is an opportunity for those in Florida to attend, **everyone** is encouraged to attend. It would be so great to get as many as possible from across the country to be together.

Pat Lentine, Vice President, discussed the current **Challenge**, due by the March meeting. The challenges this year build on the programs held last year; you will recall Liz Monaco's wonderful project with glass bottles. The challenge due now must incorporate a **reflection**. Pat went on to announce the next challenge ~ an original composition on **black paper**. You will recall Kathie Miranda's presentation on flowers on black paper. At year end, there will be two awards; one a drawing from entrants, and one from judging.

A reminder was given about no meeting in April due to our date falling on the Easter holiday.

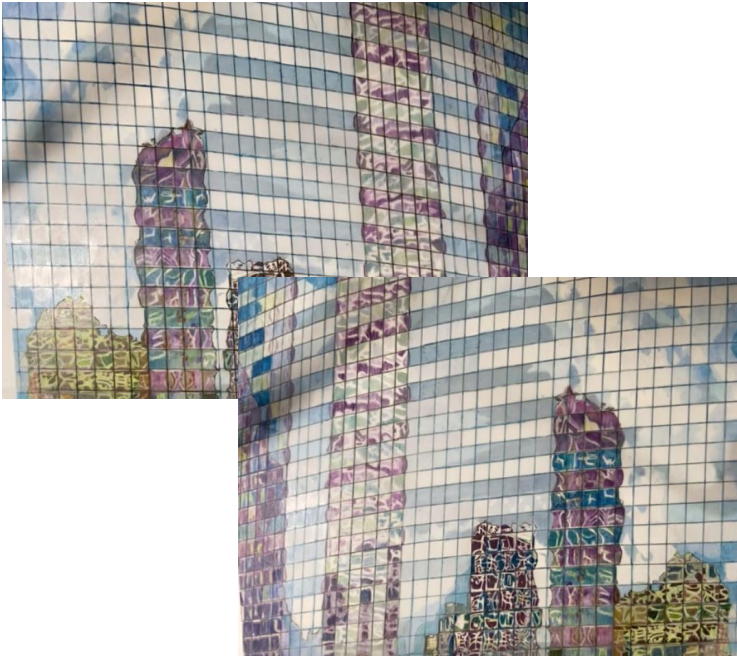
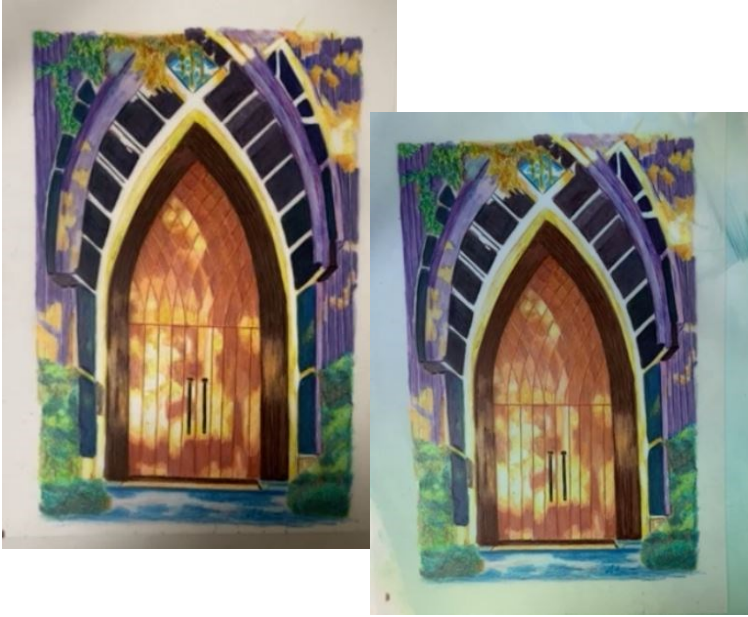
Hanneke Jevons gave an overview of the **member's exhibition** in August, here in Palm Coast, Florida. However, remote member work will also be shown on a display as well as on the website. Registration will begin in June with more details to come.

AJ Barr made an appeal to have members participate in both programs and the newsletter. With such a large membership, there is much talent to be shared and enjoyed.

Hanneke Jevons then gave the presentation about using **Grafix Dura-Lar Matte**, a drafting film, for our pencil work. On this medium, color can be applied to both front and back using colored pencil, graphite, and ink. **Kathi Darby** also took part demonstrating a Prismacolor Stix substitute. On the following pages, a simple tip list is given with photos. Please reference the recording sent to all members for much more detail.

Thank you, Hanneke and Kathi, for an intriguing insight into this fascinating and versatile drawing surface with its endless possibilities.

March Meeting Recap



- This technique can enhance value studies.
- Graphite is Hanneke's favorite (use 2B only).
- Use both sides of the sheet; flip over, work in reverse.
- Hanneke's church door—used Inktense on the back which intensifies the color.
- Can use different color paper behind to give another effect. But won't meet CPSA National standards for shows.
- Hanneke's Chicago building—also applied color on both sides—can mix the colors.
- Dura-Lar will not take too many layers, which is why you also need to use the back.
- Color erases very easily, usually. Can use a kneaded eraser.
- Prismacolor erases well with Gam-sol.
- Inktense will not erase.
- Can use a workable fixative; but no varnish.
- Pan Pastels are colorfast; adds an interesting background; needs the fixative.
- Hanneke uses an old Color Dotz System to test colors (could not find online, may be discontinued).

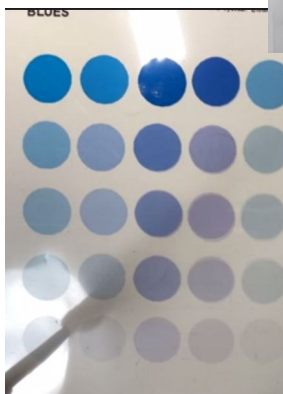
March Meeting Recap



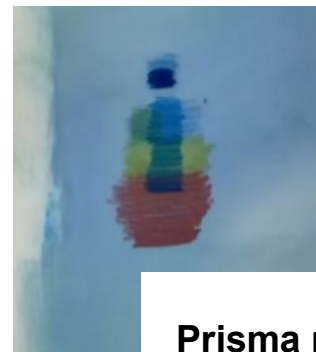
Hanneke



Dotz



Erase



Prisma plus
Gamsol

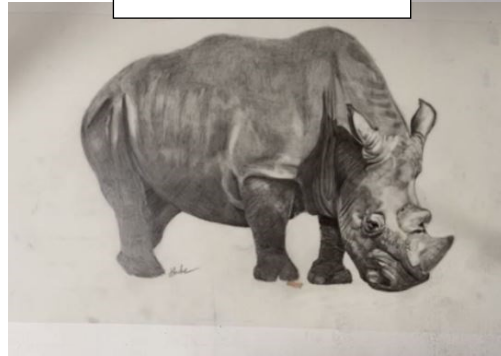
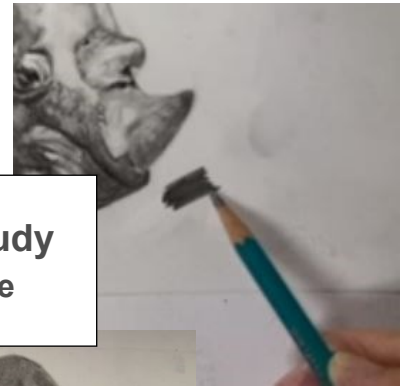
March Meeting Recap



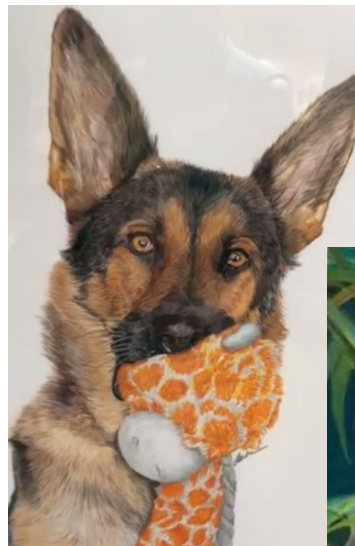
Inktense



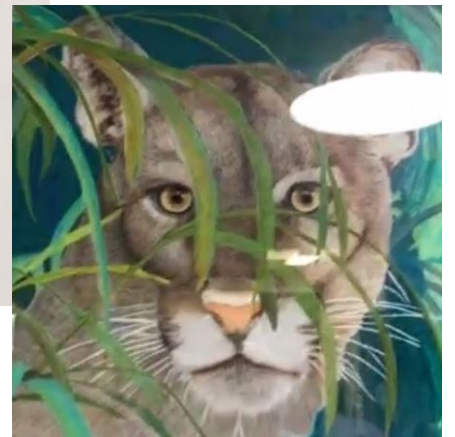
Value Study Hanneke



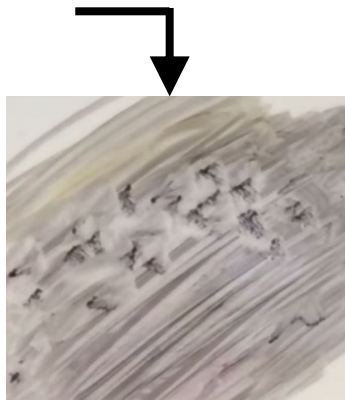
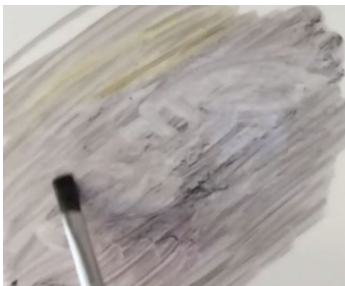
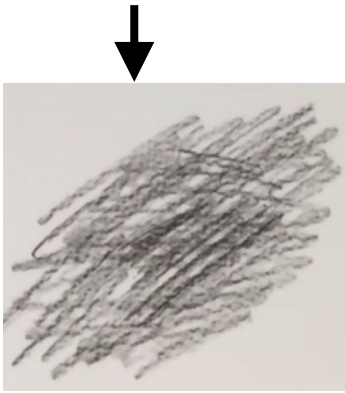
Pan Pastels



Hanneke Projects

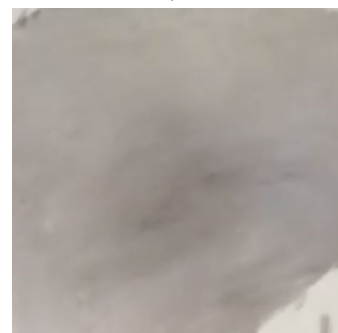


March Meeting Recap



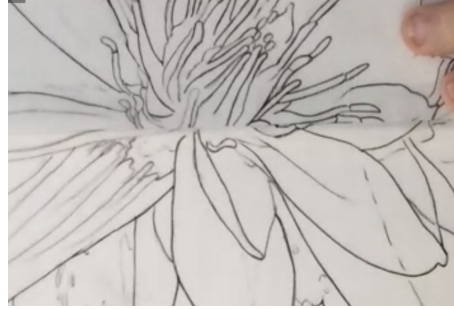
Kathi Darby: A Substitute for Prismacolor Stix

- Apply **Black** pencil
- Add **Black Grape** and scrub with Gamsol
- Add in **Yellow**, blend
- Can add texture as you go along for water or clouds
- Tap the brush for texture
- Add more color, then dry
- Use toilet paper to buff
- Will be softer on the back
- Mark which is the front
- **Posterazor** to make large templates
- **Gary**: can also use Photoshop to print horizontal flip



posterazor . sourceforge .
io/index.php?page =
download&lang = english

March Meeting Recap



Darby: Lotus front, back, Posterazor sample



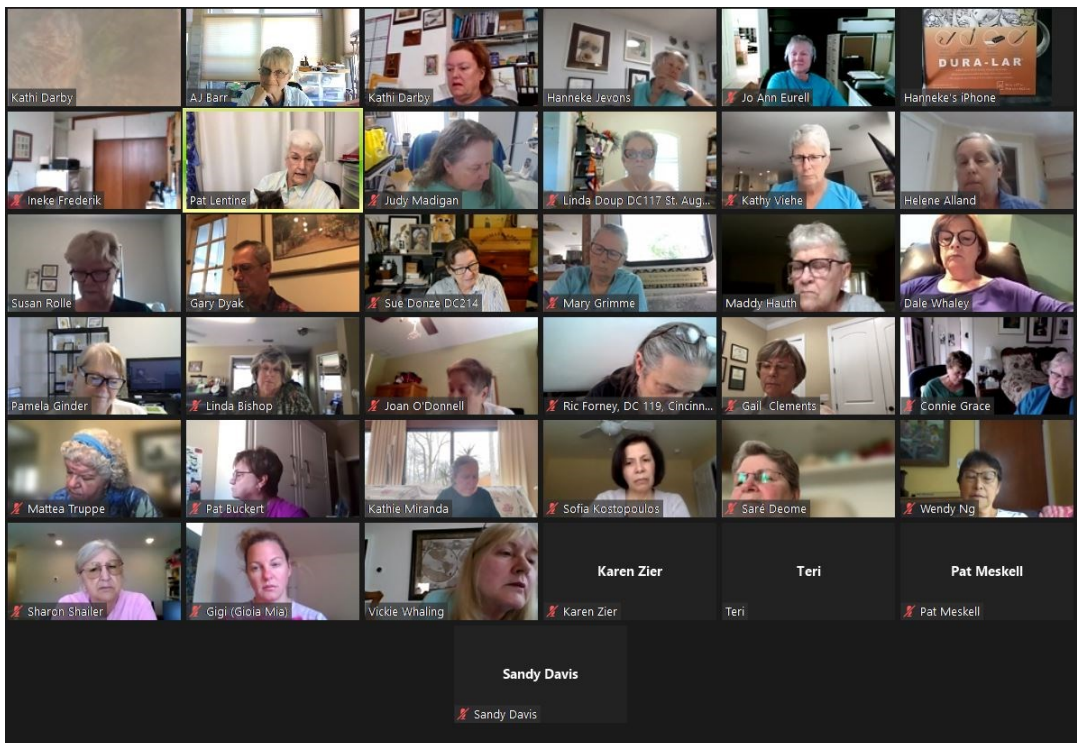
Dahlstedt project



Wendy Ng



Sare? Not sure of name Front & back



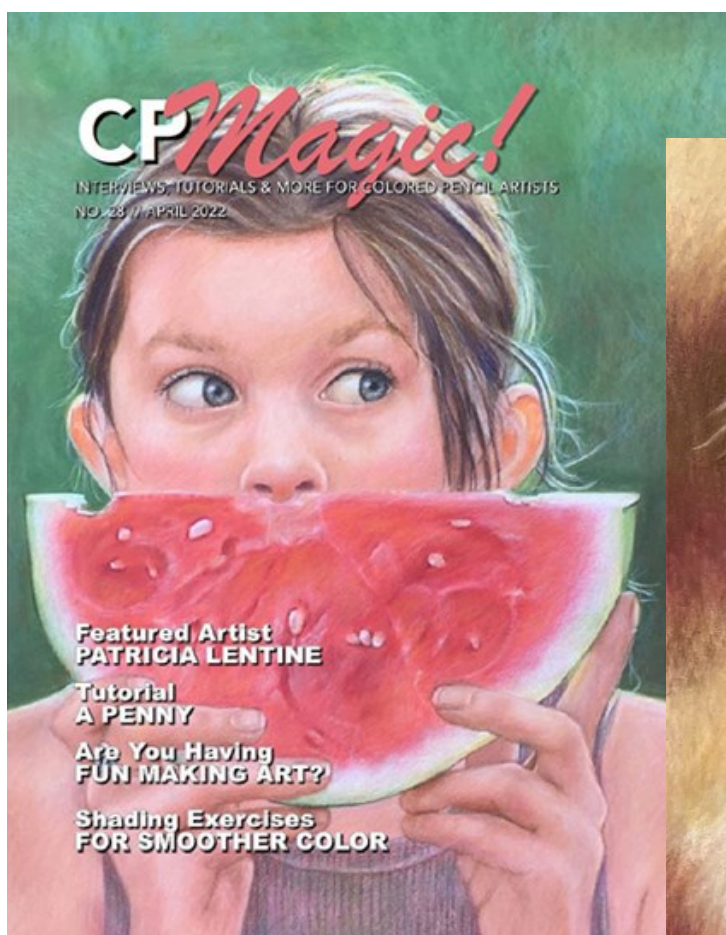
Member Achievements

Congratulations, Pat Lentine, CPSA, CPX !

Pat Lentine, CPSA, CPX, is the featured artist in **CP Magic!** for April ~ and her tutorial, **“A Penny,”** is the featured tutorial for the issue.

“Featured artist Patricia Lentine joins CP Magic! this month to share her experiences as a decorative artist, fine artist, and teacher.

Pat also shares a Prismacolor tutorial on UArt Premium Sanded Pastel paper. The tutorial includes Pat's general tips on using colored pencil, as well as many tips specific to her tutorial.”



Pat Lentine, “A Penny”



Have you received an award or recognition or were featured in an art exhibition? Please let us know! We want to share your good news. ***Your achievements are an inspiration for others!***



Whose art did the juror select?

May 1, 2022

The list of artwork juried into the 30th Annual CPSA International Exhibition is now available. Congratulations to all the artists and thanks to everyone who entered this year!

[View the list of invited artists and artwork](#)

Selected artists will receive an email with shipping instructions soon.

This year our exhibition will be in two different Florida galleries. The first is the **Dunedin Fine Art Center** (July 11 to August 13). The exhibition then travels to the **Ormond Memorial Art Museum and Gardens** in Ormond Beach (September 1 to November 15).

Our convention is back!

We'll be at the beautiful **Safety Harbor Resort and Spa** on Tampa Bay from **July 27–30**. Our two workshop leaders are **Amy Lindenberger, CPSA, CPX**, and **Denise Howard, CPSA, CPX**. Convention registration closes **July 3**, but workshops are filling up quickly, so register as soon as you can.

[Learn about the CPSA convention](#)

I hope to see you this summer in Florida!

Sincerely,

Anda Chance, CPSA, CPX
Exhibitions Director
Colored Pencil Society of America
exhibitions@cpsa.org



Classes Offered by Members

Bonnie Haney

Perspective: How to See It, How to Draw It, The View Arts Center (Old Forge, NY)
1-, 2-, 3-point perspective, all aspects such as landscape, still life, buildings, and portraits. Class is recorded. For full details, go to <https://www.viewarts.org/workshops/fine-arts/how-to-see-it-how-to-draw-it/>

Hanneke Jevons

Open Studio for colored pencil in my home on Wednesdays and Fridays from 2:00 to 4:00 PM. Space limited to 4 students. Please contact Hanneke at: hannoart@bellsouth.net

Pat Lentine

Colored Pencil and Pastel Artists: If you would like some input on your projects please join us in our online Zoom class. Each student brings to class a project they want to start or have started. Individual input on each project with each student. Class limited to 10 students. Tuesdays 7:00 - 9:00 pm and Wednesdays 1:00 - 3:00 Eastern. Register at my website www.patlentine.com/ or contact Pat at: pat@patlentine.com and 407-758-4437

Kathie Miranda

Bartlett Arboretum Botanical Art Club: In-person. Create a series of work from a yearlong survey of the Bartlett's plants. Monthly (ongoing), 1st Saturdays, 10:00-3:00 EST. Details at <http://www.bartlettarboretum.org/events-concerts> .

Liz Monaco

Colored Pencil Art: In-person, 4 weeks, Wednesdays, starting Apr 6, 1:30-3:30 at River House, St. Augustine. Register at coasjc.coursestorm.com

Create Fine Art with Colored Pencils-Beginners: On campus! 6-weeks, Saturdays, starting May 7, 11:00-12:30 pm. Register and inquire at Flagler College, 800-304-4208 flagler.edu

Kathi Darby

Exploring Grisaille with Colored Pencil: Butterfly Workshop: In-person at the Ormond Art Museum, Friday April 29, 12:30-3:30 pm. Register at ormondartmuseum.org

If you are offering instruction, please let us know
so your information can be included in future issues.

It's Not Too Late to Renew or Join!

The new year started **November 1**. But, if you forgot to renew or join, it's never too late ~ **you are always welcome here!** **NOTE: Joining now extends your membership thru 2023!**

- * The most efficient way to renew your **National** membership is to go to the website cpsa.org and renew online. Quick and easy. However, as a courtesy, we are including the National mail-in form below.
- * For the **Chapter**, go to our website cpsa117.org and go to the **Membership** page, where you will find an online form. Then to the **Store** page to pay the \$20. However, should you have any difficulties, simply let us know and we will get you signed up (cpsa117staug@gmail.com). **Thank you!**

CPSA Mail-in Membership Form



2022 Membership Year Ending October 31, 2022

Save time!

Join instantly online at
www.cpsa.org/membership

Use this form only if you are
UNABLE to pay online.

Make check payable to CPSA
(in U.S. funds) and mail
with completed form to:

Colored Pencil Society of America
4157 Mountain Rd #122
Pasadena, MD 21122-4455

Please check and complete applicable items:

- I am a new first-time member
- I am renewing or rejoining
- I belong to a CPSA district chapter

If so, which one? (City or chapter number):

Membership Payment U.S. Funds Only*

One-Year Dues

- \$45 U.S. and Canada
- \$65 All Other Countries

Ten-Year Membership Option (U.S. only)

- \$400 membership through October 2031

We welcome donations. Amounts in excess of dues will be considered a donation, and used for CPSA general operating expenses.

*CPSA charges a non-waiverable \$12 returned check fee for any check returned to us by your bank for any reason.

PRINT CLEARLY

| | | |
|---|--|-----------------|
| First Name (if desired, you may also add middle name or initial) | | Last Name |
| Street Address or PO Box | | |
| City | State/Prov. | Zip/Postal Code |
| <input type="checkbox"/> United States <input type="checkbox"/> Canada <input type="checkbox"/> Other Country: _____ | | |
| Primary Phone () () | Alternate Phone (if available) () () | |
| Primary Email Address | | |
| Alternate Email Address (optional) in case we can't reach you at your primary email | | |
| Your Personal Art Website (optional) for inclusion in the "Websites of Members" listing on the CPSA website | | |
| <input type="checkbox"/> I regularly teach colored pencil classes or workshops and would like to be included on the list of instructors on the CPSA website (updated January and June). Note: Your website will be listed as how to contact you. | | |

Membership Information

- Membership begins once your payment has been processed.
- Members may renew for the next membership year beginning July 15.
- **Current members who fail to renew by December 31** lose their membership standing and forfeit any signature status they have earned.
- **New first-time members who join on or after May 1** will have membership standing through October 31 of the following year.

Note to U.S. Members About Bulk Mailings

Your copy of the CPSA magazine will be mailed to the address on this form by bulk mail in November and May, providing your membership is paid as of October 31. Since the USPS **does not automatically forward bulk mail**, please make other arrangements if you'll be away at those times.

CPSA Directory Listings

The annual CPSA membership directory lists members as of January 1. Members will receive an email notification from CPSA when the digital directory is available to download. CPSA prohibits use of member information for promotional purposes without authorization from the CPSA national governing board.

- I want a partial directory listing (name, city, state, country only) NOTE: Other members may find it difficult to contact you and you will miss out on special offers from our corporate members.

If you **MOVE** or have further questions, send an email to membership@cpsa.org, write to the address on this form, or choose "Change My Info" under Membership at www.cpsa.org.

2/10/2022

Our Board Members

CPSA-DC 117

President:

Linda Doup

Vice President:

Pat Lentine

Secretary:

Kathy Viehe

Treasurer:

Judy Madigan

Membership:

Kathi Darby

Newsletter/Website:

AJ Barr

Historian:

Kathy Viehe

Publicity:

Jo Ann Eurell

President Emeritus:

Hanneke Jevons

Membership Information

Chapter Membership Benefits:

- Networking with other colored pencil artists
- Participation in sketch groups
- Member discount rate for local workshops
- Chapter newsletter
- Opportunities for exhibits and event participation

A member of the local CPSA DC117 St. Augustine Chapter must also be a member of the Colored Pencil Society of America.

The benefits of CPSA membership are worth it:

- A national newsletter, To The Point, twice yearly.
- Product research, pigment identification, lightfast information
- Lower entry fee for annual CPSA exhibitions
- Lower rate for workshops at CPSA Convention
- International membership networking directory
- District Chapters for local and regional networking
- Free link to your website
- Ability to earn Signature status
- NOTE: Only CPSA members who have attained Signature Status may use the initials CPSA or CPX after their name.

CPSA remains firmly dedicated to the fundamental principles of inclusion and diversity, and to racial justice as an inalienable human right.

Newsletter Contact Info:

For submissions and requests to be profiled, please contact either AJ or Linda.

AJ 386-283-2433

cpsa117staug@gmail.com

Linda 386-295-0486

lindadou@att.net



MEMBERSHIP APPLICATION

New Membership Renewal

Check if you have paid CPSA National

NAME: _____

ADDRESS: _____

CITY: _____ STATE: _____

ZIP CODE: _____

EMAIL: (Please print) _____

PHONE(s): _____ (Home) _____ (Cell)

- Annual chapter dues are **\$20**.
- Membership year runs from November 1st to October 31st.
- Applications for CPSA National can be obtained through the website: www.cpsa.org

GO TO THE WEBSITE cpsa117.org/membership to complete the online form.

Then to the Store page to complete the payment. Thank you!