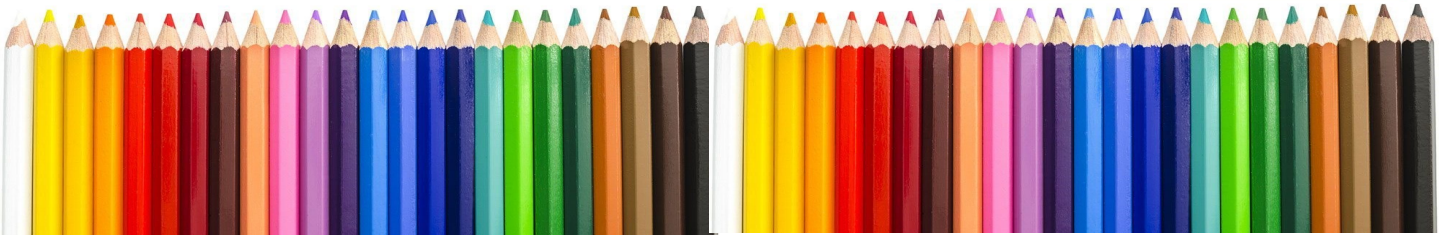


Pressing the Point

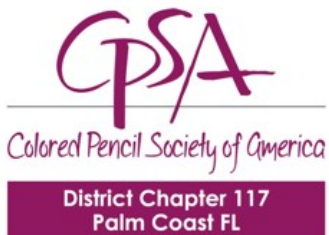
November 2023



District Chapter 117 | Palm Coast FL



We meet on the 3rd Sunday of each month at 1:00 PM (except July & August).
Please check the website for any scheduling changes. www.cpsa117.org



Colored Pencil Portraits on CANVAS

Kathy Viehe and Pat Lentine
Sunday, November 19, 2023, 1:00pm Eastern
on Zoom

Completing a Color Pencil Portrait on Canvas may not be for everyone, but it has several advantages over some other surfaces. In this discussion/demonstration, Kathy and Pat will discuss the pros and cons of canvas and specifically drawing portraits on canvas. Join us to learn more about these techniques.

Welcome new members:

**Marianne Barnhill
Joclyn Chabot
Leah Hochstaedt
Janice Howarth**

So happy to have you
with us!

Our membership has such a depth and breadth of talent ~ we welcome you to share your many experiences, achievements, and tips. Whether you are a beginner or professional, we never stop learning from one another.

Let us hear from you!

[November Meeting](#)

[October Recap](#)

[Member Achievement](#)

[Member Show](#)

[Classes](#)

Chapter Meeting

November ~ A time for family and friends!

This is the month that our thoughts turn to family or close friends. Many of us will travel to join them, or create wonderful memories in your own home!

- ♦ **Program** ~ A special month with two presenters ~ **Kathy Viehe and Pat Lentine** ~ will present colored pencil on canvas. This is an interesting topic on a medium that presents new challenges.
- ♦ **Challenge Update** ~ The “**Gold Leaf or Gold Pencil**” was due in June, but the window is still open! The new challenge is your creation on **Grafix film**, which was going to be due in September; however, these will be due by November. The new challenge, a creation on **canvas**, will be announced this month, due by January. Two prizes will be awarded, one by a drawing and one by a judge. Please note, although everyone is invited to participate, only **members** are eligible to win the awards.

Entries will be posted on the website [cpsa117.org/Challenge 2023/](https://cpsa117.org/Challenge%202023/). Submit entries to cpsa117palmcoast@gmail.com.

- ♦ **Facebook** ~ We would love to have you join us on Facebook. This is a great forum to share your works in progress. It is an opportunity to share your insights as well as pick up a few tips. We hope to see you there!
- ♦ **K-9 Portrait Project** ~ This is a project to draw the K-9 unit as a fundraising gift to the Sheriff's office in Flagler County. The due date is now November 17. Please get your drawings to Linda Doup.

Challenge Note: **Everyone** is invited to submit a photo of your work. The one rule is that your submission must have been done during and/or after the announcement (no prior work). Completing each challenge this year makes all **members** eligible for one of two prizes (gift cards) by either a drawing or by a judge. But, more importantly, it will serve to strengthen your own skill set as you move forward with your colored pencil endeavors.

Zoom Info:

Remember, **an email invitation will be sent to every member or guest with the link for the meeting.** You will click on the link and then join in. Feel free to invite someone to attend with you ~ **all are welcome.** Questions: cpsa117palmcoast@gmail.com.

CPSA117 2023 Chapter Exhibition

A wonderful time was held at the opening reception on October 29 at the Expressions Gallery in Palm Coast.

It was great to see friends as well as the amazing artwork. The show goes through December 9 ~ but, in case you can't see it in person, the show will continue on the website. Be sure to check it out!

A few pics from the reception!



CPSA117 2023 Chapter Exhibition



CPSA117 2023 Chapter Exhibition



October Meeting Recap

Judy Madigan, President, welcomed everyone to and introduced the Board members. There was a reminder that membership renewals are underway (be sure to renew with CPSA at \$50 and the chapter remains at \$20; anyone who joined after May 1st is covered through 2024).

The members-only exhibit at Expressions Gallery opens **October 29** with a reception, but is also online. For those showing pieces at the gallery, drop off is **October 25, 5:00 pm**.

The CPSA Explore This online exhibition is now open for entries. This category is predominantly colored pencil, but can include other media.

Judy discussed the Flagler County Sheriff's Office K-9 portrait project and invited everyone to participate. An end date has been set for **November 17**; the pieces will be presented to the FCSO in early December. Multiple portraits can be done of the same dog; there are stock photos of 7 dogs. Keep Linda Doup informed of your progress. The preferred size is 8"x10"; the Chapter is providing the matting.

The Chapter also needs to create a new "Palm Coast" image. The Chapter is asking for your ideas; please submit them to Judy Madigan .

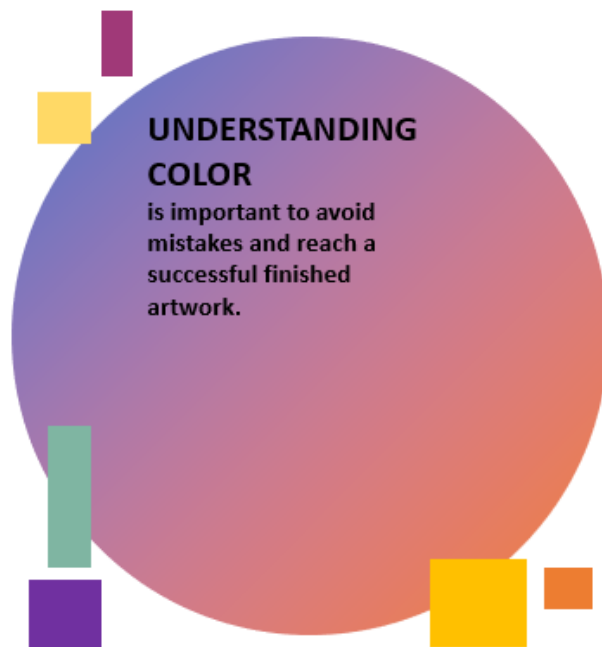
Judy then introduced **Priscilla Humay**, today's presenter. Priscilla is an accomplished artist who won many awards and recognition for her work, including in published works. She attended the Chicago Art Institute, the Illinois Institute of Technology, and Charles University in Prague. Priscilla has also been an Artist in Residence at Big Cypress National Park, twice! She is currently an instructor of a series of classes at the Ormond Memorial Art Museum. Finally, Priscilla holds CPSA Signature status, CPSA and CPX.

Priscilla shared an extensive PowerPoint presentation , which traced her journey with colored pencil leading to her accomplishments in mixed media. The path was far from simple, yet can be attained by anyone with the desire to go beyond where they are now. Priscilla's path took many years of diligent artistic application, discipline, and an unflagging and courageous pursuit of creativity.

These are some basic considerations Priscilla goes through before starting a project:

- ◆ Viewpoint
- ◆ Composition
- ◆ Means of composition
- ◆ Angle of objects and use of line
- ◆ Proportioning
- ◆ Foreshortening
- ◆ Perspective (1, 2, or 3 point)
- ◆ Ellipses
- ◆ Values
- ◆ Texture

Finally, there is the all important element of color, the surface you choose, and the various techniques that you will apply. It is also recommended that you create a color sample chart so you have a reference as to what colors are optimal.



Familiarize yourself with your drawing and painting media by making reference samples of colors you wish to use. This will make your choices easier when creating.

- Learn about various surfaces and paper choices and how color mediums react when applied.
- Mark Making with colors creates texture.
- Color Values & Gradation bring form.
- Overlaying creates interest.
- Layering brings about depth.
- Neighbors of Complimentary Colors may be more interesting.
- Attention should be paid to Color Temperature.
- Grisaille brings a unified ground.
- For color intensity, various Pressure is needed.
- Blending is necessary for a smooth form.

It is not possible to cover all the information that was presented, but here are some significant slides to review, especially as you start out on your journey.

A gentle start

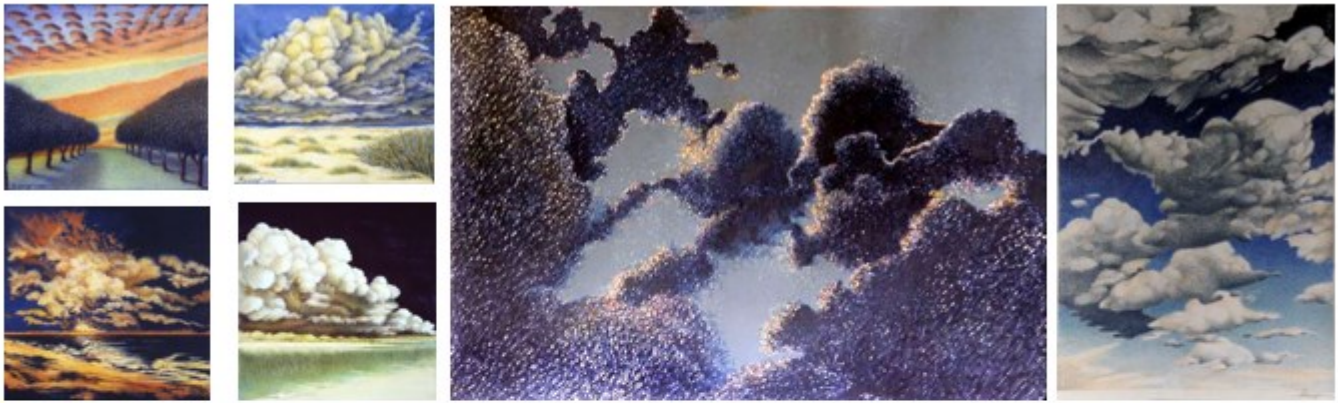
- Look, analyze, and draw what you love.
- Drawing the simplest object is a study of its line, shape, form, color, and texture.
- More practice strengthens your techniques and “Practice Makes Perfect”.
- Mistakes are a necessary part of practice. You learn from those mistakes, so value them.
- Learning basic art principles and color theory gives you confidence and a quicker start.
- Creating in a series allows you to stretch a particular genre and experiment with enhancing your own style.
- One completed artwork often leads to another.
- Your art can weave into other visual venues.

The predominant theme is that one artwork can lead to the next artwork; but also not just another piece, but also opportunities. Doors open along the wending path. But, is that path “accidental,” or a deliberate effort based on accumulated knowledge, keen observations, courage to experiment (learning from mistakes), discipline (putting the time in), and a dedication to reach the next vista.



When drawing small sketches or plein air, give focus to direction of light, shadow, and color value changes. Your sketches can lead you to to a series and other larger artworks.





Do quick sketches.

Allow for mistakes and learn from them.

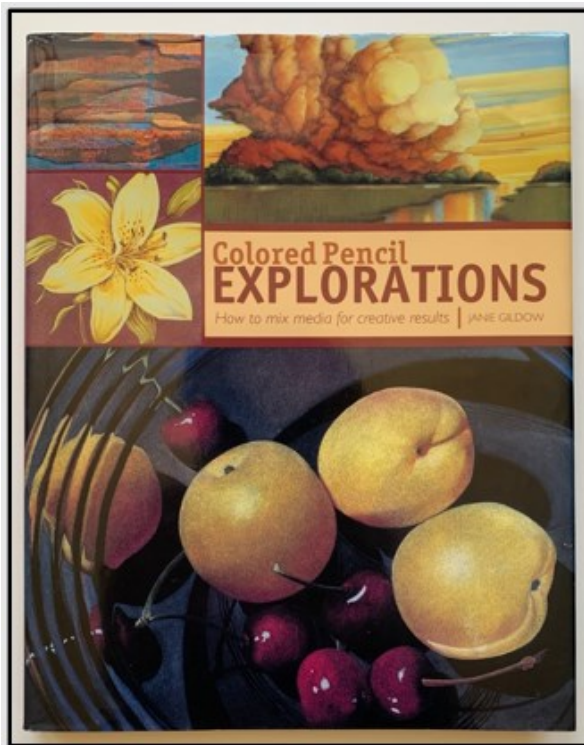
Enjoy your experience.

The time spent itself can be both calming and very fulfilling.

Creating art is the act of seeing, recording this in your brain, then your brain signals your hand to recreate your vision on a surface.

The creative process offers you mental stimulus.

It may lead you to visual journaling, developing a series, creating larger artworks, or an entirely new adventure.



The book with demonstration of artwork technique, that was stimulated by the previous artwork.

"Atlantique No. 2", 22" x 30", colored pencil on 100% cotton paper (upper right)

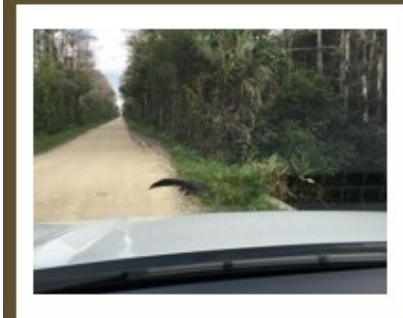
"Arid Marsh No. 1", 22" x 30", colored pencil on 100% cotton paper (lower left)

"Inlet Billows No. 2", 24" x 24", acrylic & colored pencil on wood (lower right) **THE START OF GOING BEYOND!**

This artwork was at the CPSA "Explore This" Exhibit in Stuart Florida and stimulated my working in mixed medium on various surfaces.



I received two month-long:
Artist-In-Residence opportunities
at
Big Cypress National Preserve
U.S Department of Interior National Park Service
2014 and 2016



Daily plein air solo adventures!
Much can be accomplished when
all alone for a month each time.
Artworks stimulated by this
residency follow:



Exploring the “push and pull” of colored pencil and acrylic paint.



“Tall Grasses”

12” x 12” x 1-1/2”

colored pencils & acrylic on cradled birch wood

This amazing area was an inspiration and allowed me to create quickly and loosely.

I went out into the glade areas and found my scene.

I drew quickly but softly on the wood using Verithins and various colored pencils.

When I returned to my quarters in the evening, I reevaluated my work.

I added a thinned acrylic wash over a few areas.

When near dry, I again added additional colored pencil emulating strokes for the grasses and a circular motion for the cloud areas.

The following morning, I again reapplied colored pencil and refined specific areas with Verithins.

Then reapplied a few touches of acrylic paint.

Later, I used a clear, matte fixative to spray lightly over the entire drawing.



“Early Evening”

12” x 12”, colored pencil & acrylic
on cradled birch wood

Repeating the same process, I continued the following day.

This time, I experimented with how the strokes were applied.

Thicker strokes for foreground and thinner strokes for the background.

The cloud area was a push and pull of colored pencil and acrylic.

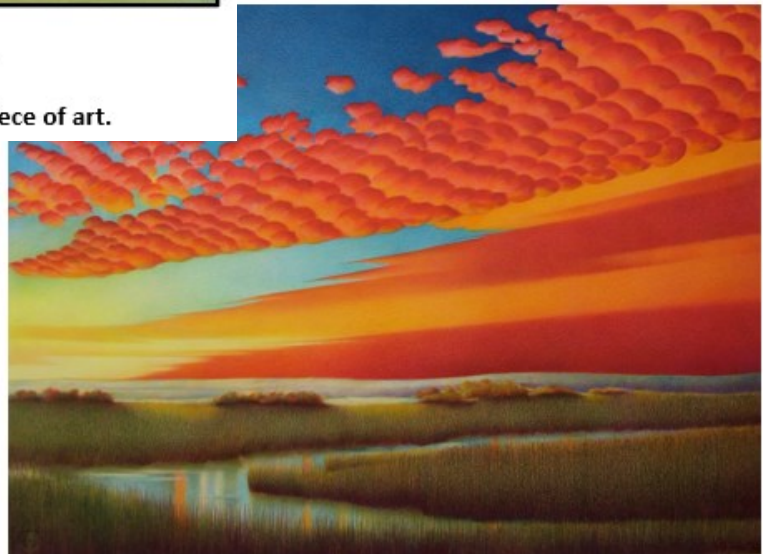
The tree in the foreground was reevaluated as were the shadow areas.....because the time elapse from my drawing start gave the entire composition totally different values and shadow areas.....

When drawing outdoors, values and shadow values are applied much later and toward the finish of the drawing.



One preliminary sketch yields a finished work and leads to Strathmore contracting the artwork for advertising.

**Preliminary sketch ~ Plein Aire
"near the Matanzas Inlet"
This sketch leads to the following final piece of art.**



The preliminary sketch led to this: "Matanzas Sky No. 5", 22" x 30", colored pencil on 100% cotton paper



The small sketch on the left bottom led to the final art next to it.
The final art led to Strathmore Corporation contracting the art for their advertising.



When things get tight ~ Loosen up!
 Picking up a paint brush does it.
 Previous color use led to the need to do
 looser artworks.
 It follows a thread of prior visual stimulus.

"Musings ~ Matanzas Sunset"
 48" x 36"
 acrylic on canvas



"Fish for Demetrios", 20" x 15"
 colored pencil on 100% cotton paper

Continuously honing
 your drawing skills and
 playing with color studies
 are essential.

~

Creating small sketches and
 visual journaling weaves
 a thread of continuity that
 can lead to your future art
 and larger final artworks.

~

Going from a tight to a
 loose painting or drawing,
 and going from loose to
 tight helps to improve your
 "eye to brain to hand"
 coordination.



"Lotus Garden", 22" x 26"
 colored pencil on 100% cotton paper



Working in a series helps you to see subtle color relationships. It reinforces your knowledge of "Color Theory".



"Prickly Pear No. 2 – In Daughter's Wash"
12" x 12", colored pencil & acrylic on canvas

"Prickly Pear No. 1 – In Daughter's Wash"
16" x 12", colored pencil & water-soluble media on 100% cotton paper



Enjoy the process of experimenting with various compositions, colors, textures, and shapes. Simplify the composition. Simplify the colors. Allow negative space to become part of the composition.



Member Achievements

Congratulations ~ Priscilla Humay

St. Augustine Art Association

Fantastic Florida Exhibition

November 3 through December 30, 2023

It's all about **Priscilla** this month! What a perfect way to top off a wonderful Chapter presentation!



HONORABLE MENTION: "Matanzas Sky No. 5" by Priscilla Humay

"Matanzas Sky No. 5"

Honorable Mention

Classes Offered by Members

Hanneke Jevons

Open Studio for colored pencil in my home on Wednesdays and Fridays from 2:00 to 4:00 PM. Space limited to 4 students. Please contact Hanneke at hannoart@bellsouth.net

Pat Lentine

Colored Pencil and Pastel Artists - online Zoom classes: Each student brings to class a project they want to start. Individual input on each project. Class limited to 10 students. Tuesdays 7:00 - 9:00 pm and Wednesdays 1:00 - 3:00 Eastern. Register at my website www.patlentine.com/ or contact Pat at: pat@patlentine.com and 407-758-4437

Colored Pencil & Pastel Pencils: The Artists' Workshop of New Smyrna Beach, Mondays, 5:00 - 7:00 PM. This class is for students who want to improve their colored pencil or pastel pencil art. Pat will help you figure out how to start, make decisions, solve problems, and give finishing touches to your projects. Contact: pat@patlentine.com and 407-758-4437

Priscilla Humay

Teaching at Ormond Memorial Art Museum (ormondartmuseum.org)

- * **Basic Drawing**, 2-part series, Nov 2 - Nov 9
- * **Colored Pencil on Toned Paper**, Jan 2024
- * **Colored Pencil on Dura-Lar**, Feb 2024
- * **Plein Air**, Mar 2024
- * **Colored Pencil on Cradled Wood**, Apr 2024
- * **Colored Pencil & Mixed Media on Cradled Wood**, May 2024

Kathi Darby

Teaching at Ormond Memorial Art Museum (ormondartmuseum.org)

Colored Pencil Chipmunks Workshop, Oct 17

Colored Pencil Frog Workshop, Nov 14 & Nov 16

Kathie Miranda

New classes TBA.

Liz Monaco

New classes TBA

**If you are offering instruction, please let us know
so your information can be included in future issues.**

Our Board Members

CPSA-DC 117

President:

Judy Madigan

Vice President:

Pat Lentine

Secretary:

Kathy Viehe

Treasurer:

Kathi Darby

Membership:

Linda Doup

Newsletter/Website:

AJ Barr

Historian:

Kathy Viehe

Publicity:

Jo Ann Eurell

President Emeritus:

Hanneke Jevons

Membership Information

Chapter Membership Benefits:

- Networking with other colored pencil artists
- Participation in sketch groups
- Member discount rate for local workshops
- Chapter newsletter
- Opportunities for exhibits and event participation

A member of the local CPSA DC117 St. Augustine Chapter must also be a member of the Colored Pencil Society of America.

The benefits of CPSA membership are worth it:

- A national newsletter, To The Point, twice yearly.
- Product research, pigment identification, lightfast information
- Lower entry fee for annual CPSA exhibitions
- Lower rate for workshops at CPSA Convention
- International membership networking directory
- District Chapters for local and regional networking
- Free link to your website
- Ability to earn Signature status
- NOTE: Only CPSA members who have attained Signature Status may use the initials CPSA or CPX after their name.

CPSA remains firmly dedicated to the fundamental principles of inclusion and diversity, and to racial justice as an inalienable human right.

Newsletter Contact Info:

For submissions and requests to be profiled, please contact either AJ or Linda.

AJ 386-283-2433

cpsa117staug@gmail.com

Linda 386-295-0486

lindadou@att.net



MEMBERSHIP APPLICATION

New Membership Renewal

Check if you have paid CPSA National

NAME: _____

ADDRESS: _____

CITY: _____ STATE: _____

ZIP CODE: _____

EMAIL: (Please print) _____

PHONE(s): _____ (Home) _____ (Cell)

- Annual chapter dues are **\$20**.
- Membership year runs from November 1st to October 31st.
- Applications for CPSA National can be obtained through the website: www.cpsa.org

GO TO THE WEBSITE cpsa117.org/membership to complete the online form.

Then to the Store page to complete the payment. Thank you!