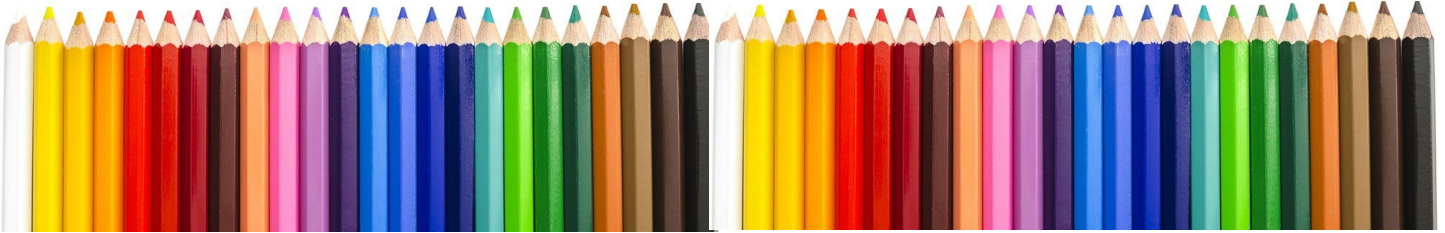


Pressing the Point

Summer ~ Jul Mini 2022

CPSA
Colored Pencil Society of America

District Chapter 117 | St. Augustine FL



We meet on the 3rd Sunday of each month at 1:00 PM (except July & August).
Please check the website for any scheduling changes. www.cpsa117.org



Where ever you roam ~ **take those pencils with you!**

No meetings July and August.

CPSA National Convention & Exhibition
July

Member Show
August

Please click the links or just scroll through the newsletter to see all the news!

[Renewal Info](#)

[Summer Look](#)

[June Recap](#)

[Classes](#)

Chapter Meeting

Summer ~ Time to enjoy family and friends and travel!

As you are aware, there are no meetings during the summer this year. A good number of us were able to enjoy the CPSA Convention instead. Such a special opportunity to meet others from across the country and to learn so much!

- ◆ **Program** ~ None in the summer, of course. The next Zoom presentation will be in **October**. For **September**, we will be having a field trip to see the **CPSA International Exhibition** at the Ormond Memorial Art Museum in Ormond Beach, Florida. If you are anywhere in the state, we hope to see you there.
- ◆ **Challenge Update** ~ The current challenge, due by the September meeting, is “**Fur.**” This can be fur on any species; you may remember the presentation by Kathi Darby last year and can build on that. Please note, although everyone is invited to participate, only **members** are eligible to win the awards.
Entries will be posted on the website [cpsa117.org/Challenge 2022/](https://cpsa117.org/Challenge%202022/). Submit entries to cpsa117staug@gmail.com.
- **2022 Member Exhibit** ~ This will be both an in-gallery (Palm Coast, FL) and online exhibit for all members regardless of location until September 17.

We look forward to seeing everyone soon !!

Challenge Note: **Everyone** is invited to submit a photo of your work. The one rule is that your submission must have been done during and/or after the announcement (no prior work). Completing each challenge this year makes all **members** eligible for one of two prizes (gift cards) by either a drawing or by a judge. But, more importantly, it will serve to strengthen your own skill set as you move forward with your colored pencil endeavors.

Zoom Info:

Remember, ***an email invitation will be sent to every member or guest with the link for the meeting.*** You will click on the link and then join in. Feel free to invite someone to attend with you ~ **all are welcome.**

To show your work, you can simply hold the piece up in front of your webcam. **OR**, you can email a photo of the piece to **AJ** (cpsa117staug@gmail.com) and we will display them for you. Problems joining that day? AJ (386) 283-2433.

June Meeting Recap

Linda Doup, President, welcomed everyone and introduced the Board members. Linda again discussed the upcoming CPSA National Convention and Exhibition, to take place the last week of July. The convention is being held in Tampa, Florida. We are looking forward to seeing many of our fellow chapter members and friends.

Pat Lentine, Vice President, gave a reminder about the current Challenge, an original composition featuring “**Fur**,” due by the September meeting. The fur can be from any species, pets, wildlife, and human! At year end, there will be two awards; one a drawing from entrants, and one from judging.

A reminder was given about the **member’s exhibition** in August, here in Palm Coast, Florida. However, remote member work will also be shown on a display as well as on the website.

Bonnie Haney gave presentation on “**Perspective.**” **Bonnie** received her degree in Business and Interior Design from the Rochester Institute of Technology. She went on to establish “Bonnie Haney Designs” in 1999. She further studied botanical art under Carl Zimmerman, as well as other notable nationally known artists. Bonnie is particularly known for her botanical drawings, but also excels in landscape, still life, figure drawing, and more. In her words, *“I work as an artist with a specialization in botanical illustration. My medium is mainly colored pencil so that I can get the fine detail necessary for the paintings.”* With Bonnie’s education and her experience as an instructor, it is a privilege to cover this important topic with such a talented artist.

Thank you, Bonnie Haney, for an in-depth look at perspective, and to **John Roback** for his assist during a technical glitch!

****NOTE:** *Due to the technical problems with Internet connectivity, Bonnie has very generously shared her perspective materials with us. Please see the following pages for the handouts. Thank you, Bonnie!*

PERSPECTIVE MADE EASY

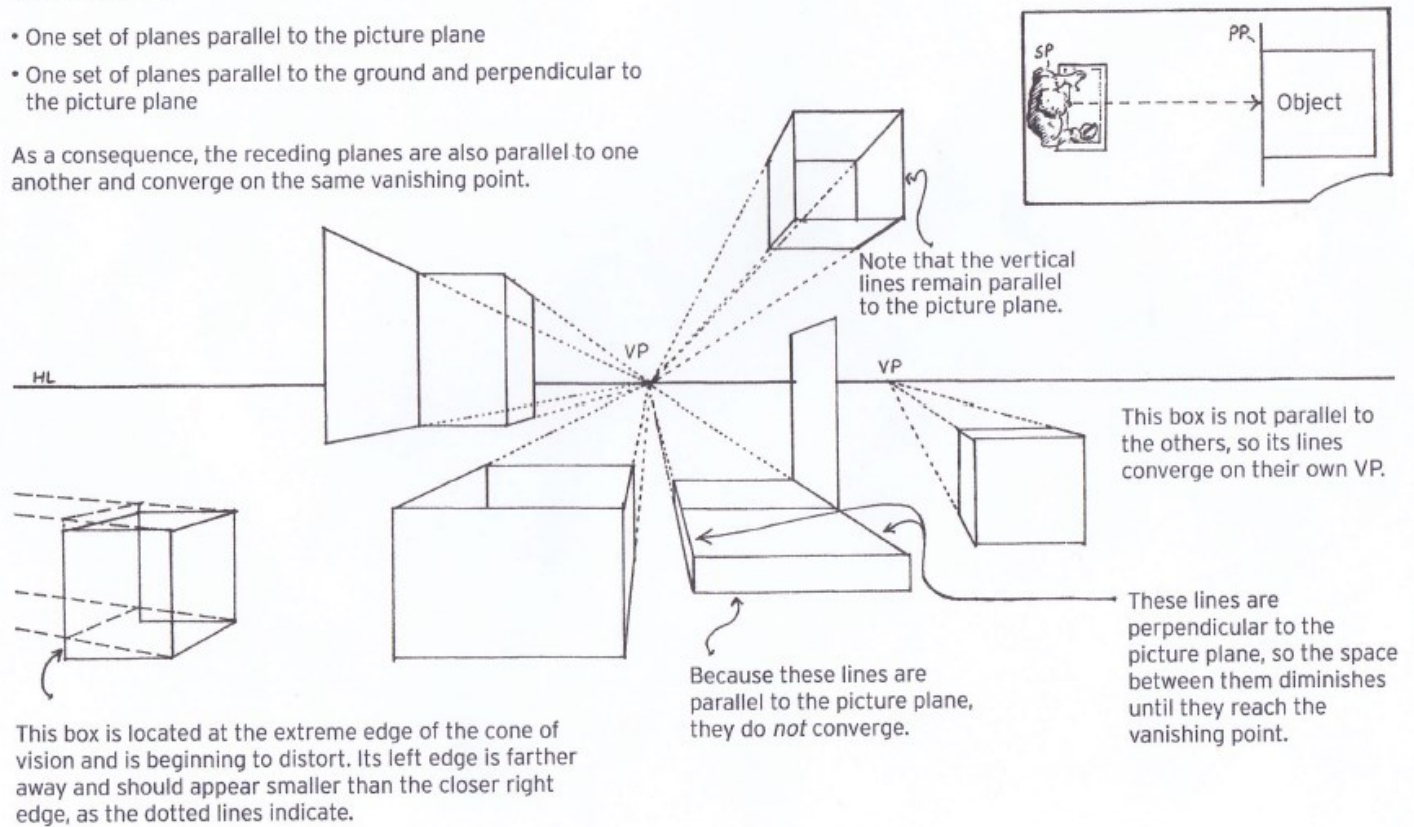
BY
BONNIE
HANEY

One-Point Parallel Perspective

The rectilinear objects shown here have the following characteristics:

- One set of planes parallel to the picture plane
- One set of planes parallel to the ground and perpendicular to the picture plane

As a consequence, the receding planes are also parallel to one another and converge on the same vanishing point.



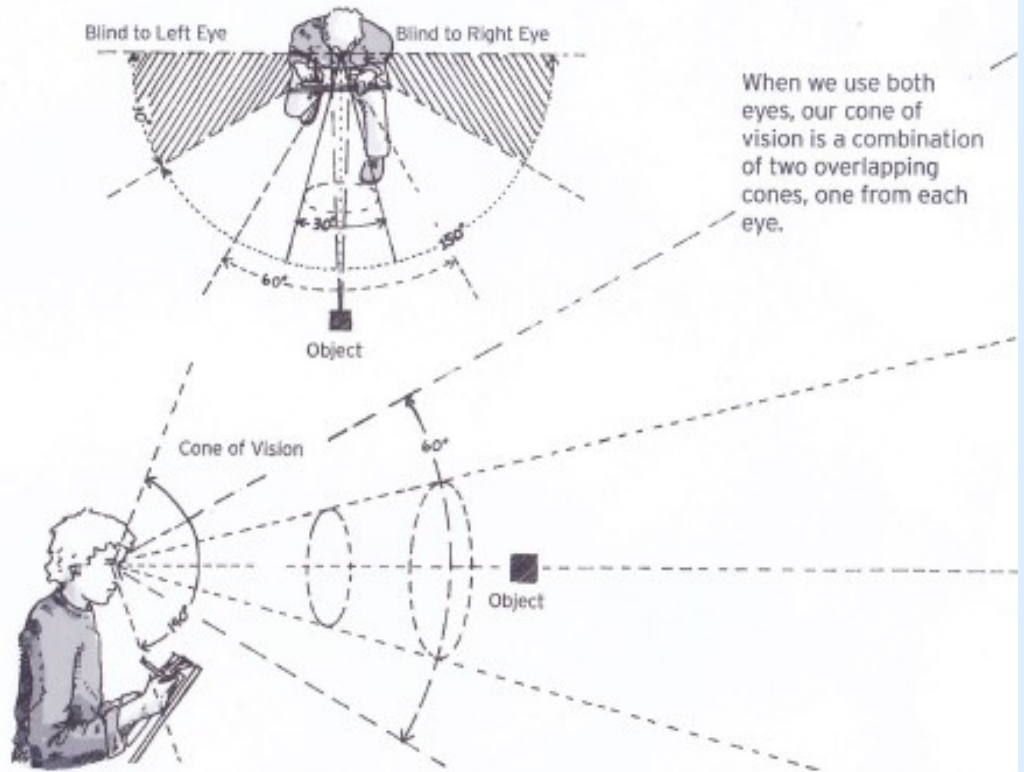
CONE OF VISION

The parts of our eyes that receive light are hemispherical, each gathering light from a cone of about 150 degrees. When these two cones overlap, we gather light from almost 180 degrees.

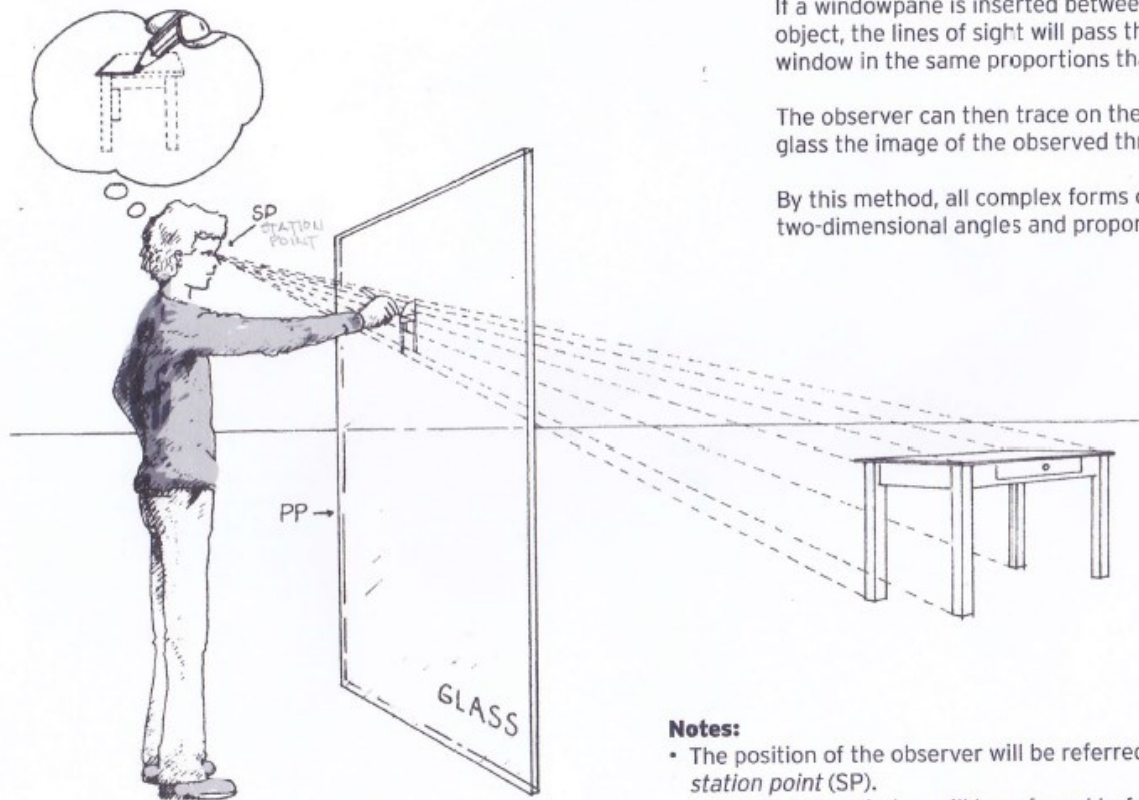
Only in the area where the fields from both eyes overlap does binocular vision occur.

Within this broad field of vision, we actually focus clearly through cones of about 30-60 degrees. When objects are outside of these standard cones of vision, we generally consider them to be distorted, as images appear through a wide-angle lens.

Vertically, our vision is limited to about 140 degrees, our sight being cut off by eyebrows, eyelids, and cheeks.



The Picture Plane



If a windowpane is inserted between the observer and the object, the lines of sight will pass through the plane of the window in the same proportions that reach the eye.

The observer can then trace on the two-dimensional plane of glass the image of the observed three-dimensional object.

By this method, all complex forms can be reduced to simple two-dimensional angles and proportions.

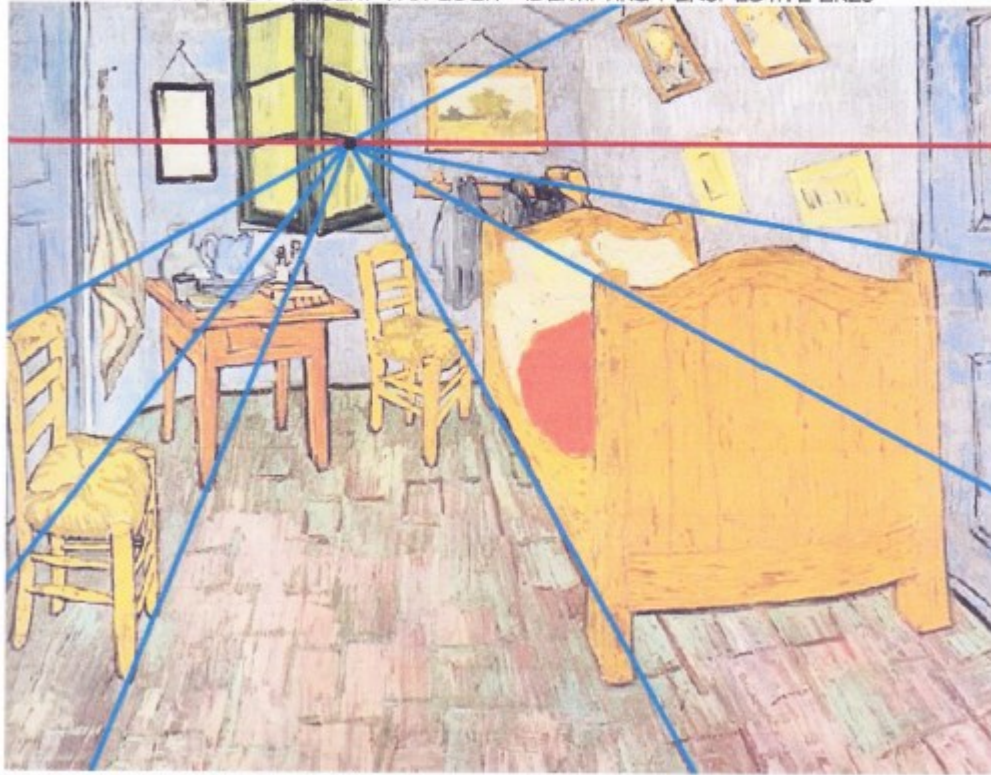
Notes:

- The position of the observer will be referred to from now on as the *station point (SP)*.
- This imaginary window will be referred to from now on as the *picture plane (PP)*.
- For the purposes of perspective drawing, the drawing paper can be assumed to be the transparent plane of the picture plane window.

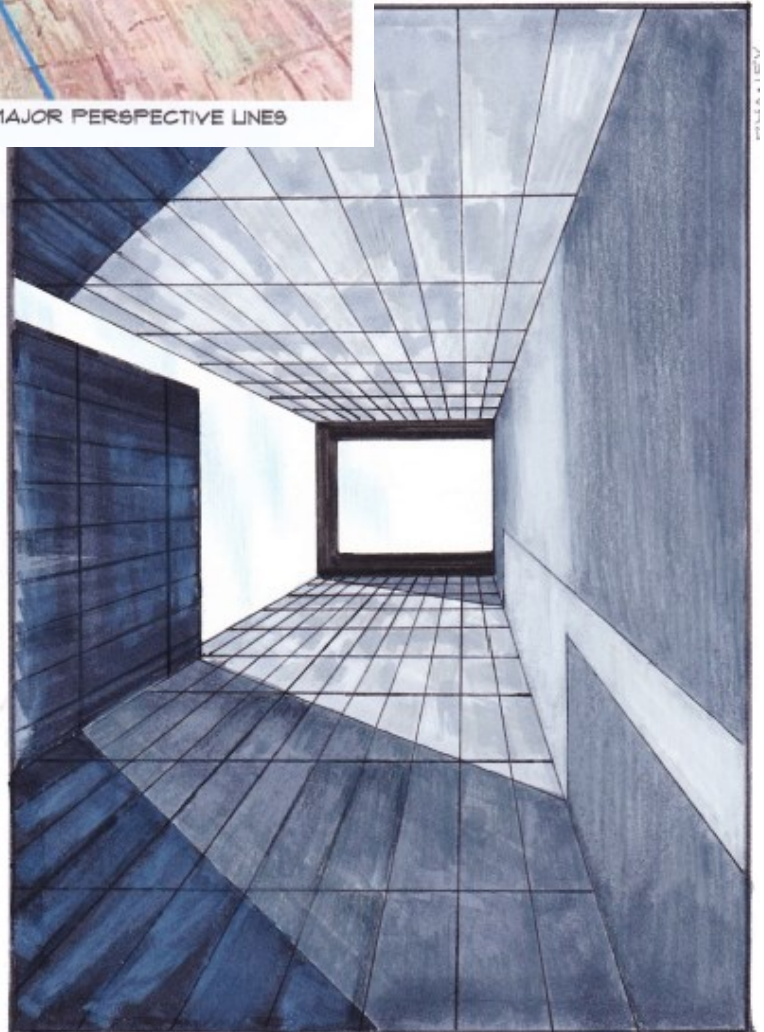
ONE POINT PERSPECTIVE:

SOME EXAMPLES:

'BEDROOM IN ARLES' BY VINCENT VAN GOGH - IDENTIFYING PERSPECTIVE LINES

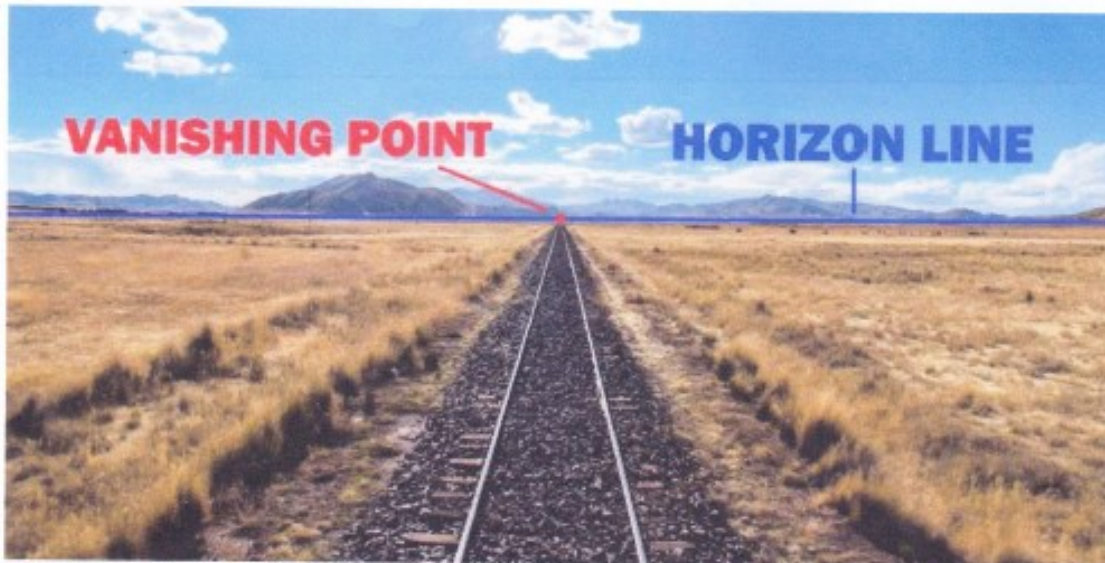


'BEDROOM IN ARLES' BY VINCENT VAN GOGH - NOTE THE MAJOR PERSPECTIVE LINES





ONE POINT PERSPECTIVE PHOTOGRAPH WITH THE ORTHOGONAL LINES DRAWN IN.



IN THIS PHOTO, THE TRACKS MEET AT THE VANISHING POINT, WHICH IS ON THE HORIZON LINE. THIS PHOTO CONTAINS MOUNTAINS WHICH RISE ABOVE THE HORIZON LINE.

Pat Averill ~ Park Drawing in one-point perspective

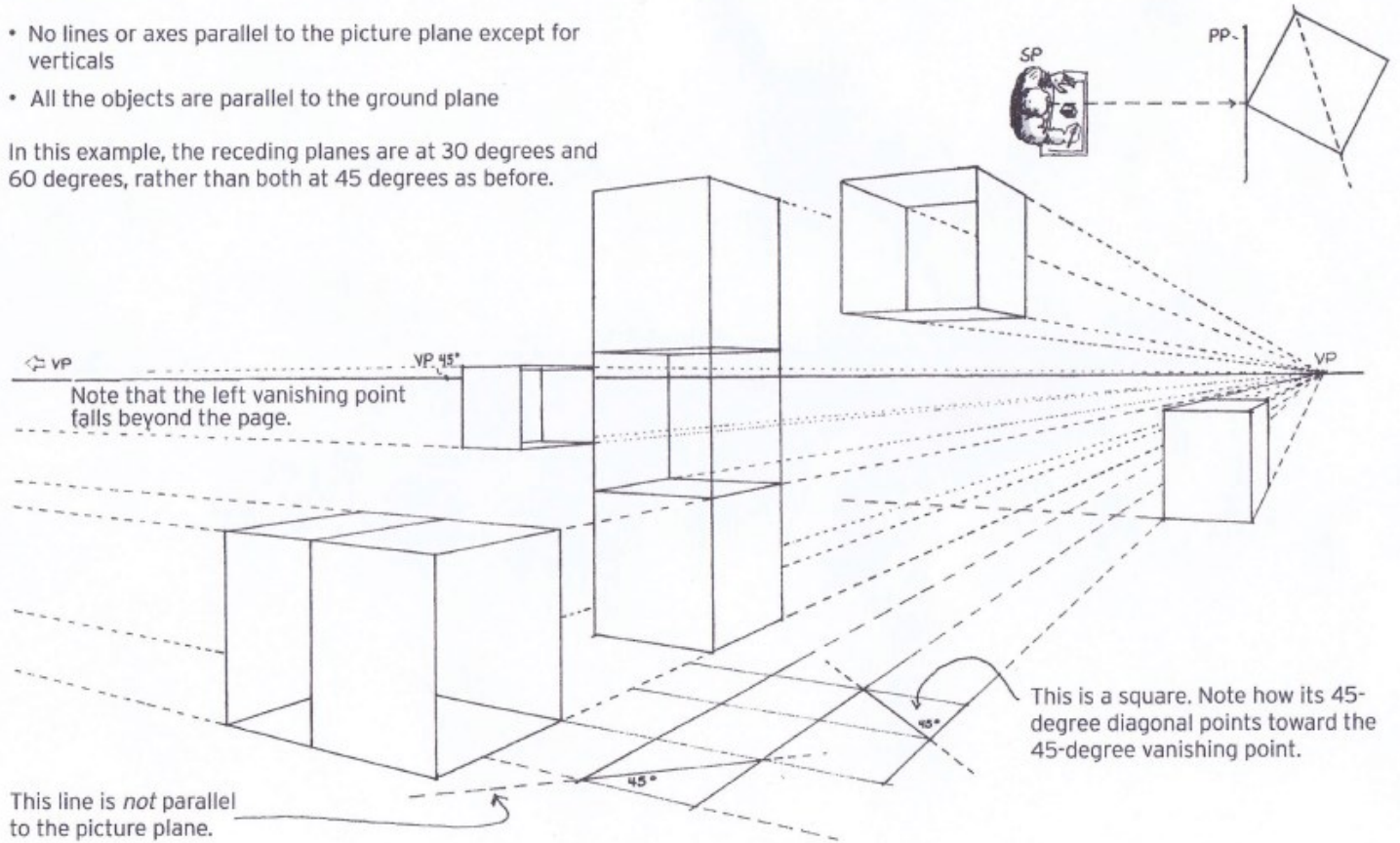


Two-Point Angular Perspective

The rectilinear forms shown here have the following characteristics:

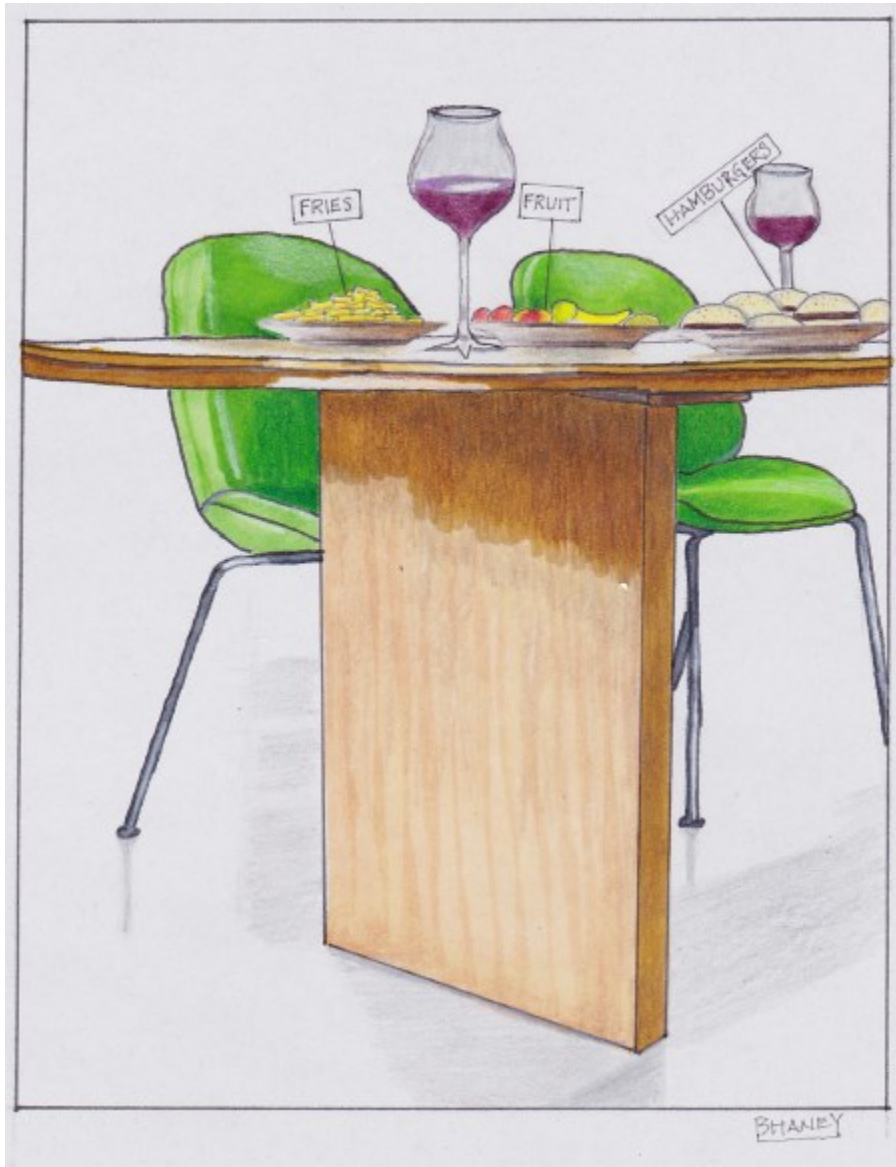
- No lines or axes parallel to the picture plane except for verticals
- All the objects are parallel to the ground plane

In this example, the receding planes are at 30 degrees and 60 degrees, rather than both at 45 degrees as before.

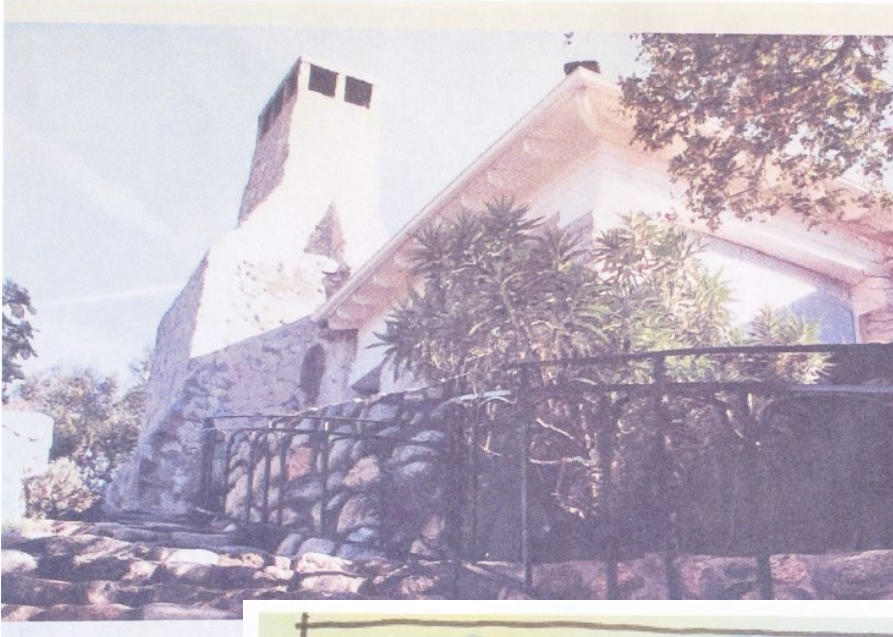




Example of two-point perspective by Bonnie Haney



Example of two-point perspective by Bonnie Haney



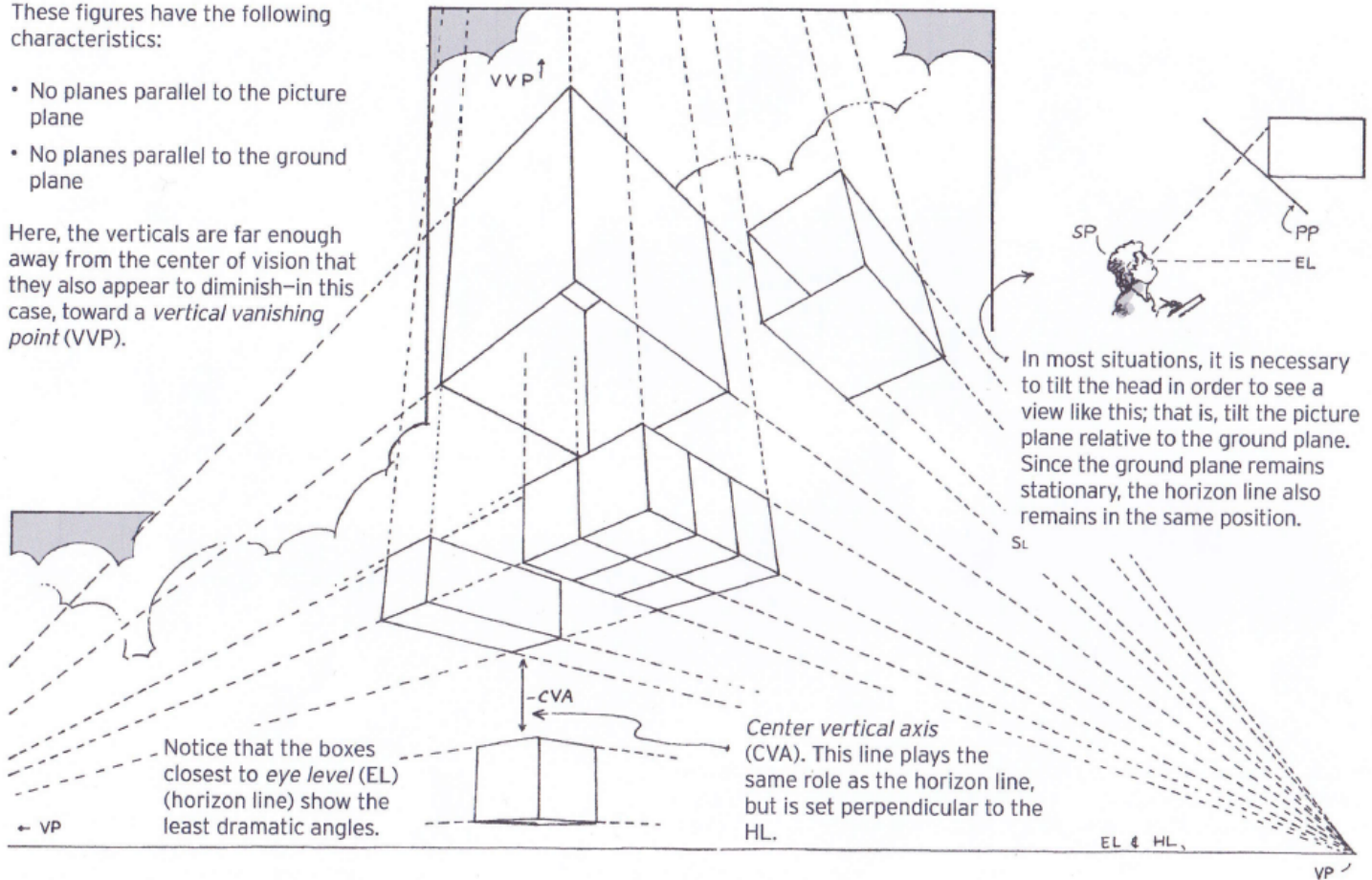
Example of two-point perspective by Swenson.
Showing the original photo and the completed piece.

Three-Point Angular or Parallel Perspective

These figures have the following characteristics:

- No planes parallel to the picture plane
- No planes parallel to the ground plane

Here, the verticals are far enough away from the center of vision that they also appear to diminish—in this case, toward a *vertical vanishing point (VVP)*.



Turn this image upside down for an aerial view of the verticals diminishing downward (next page ...)

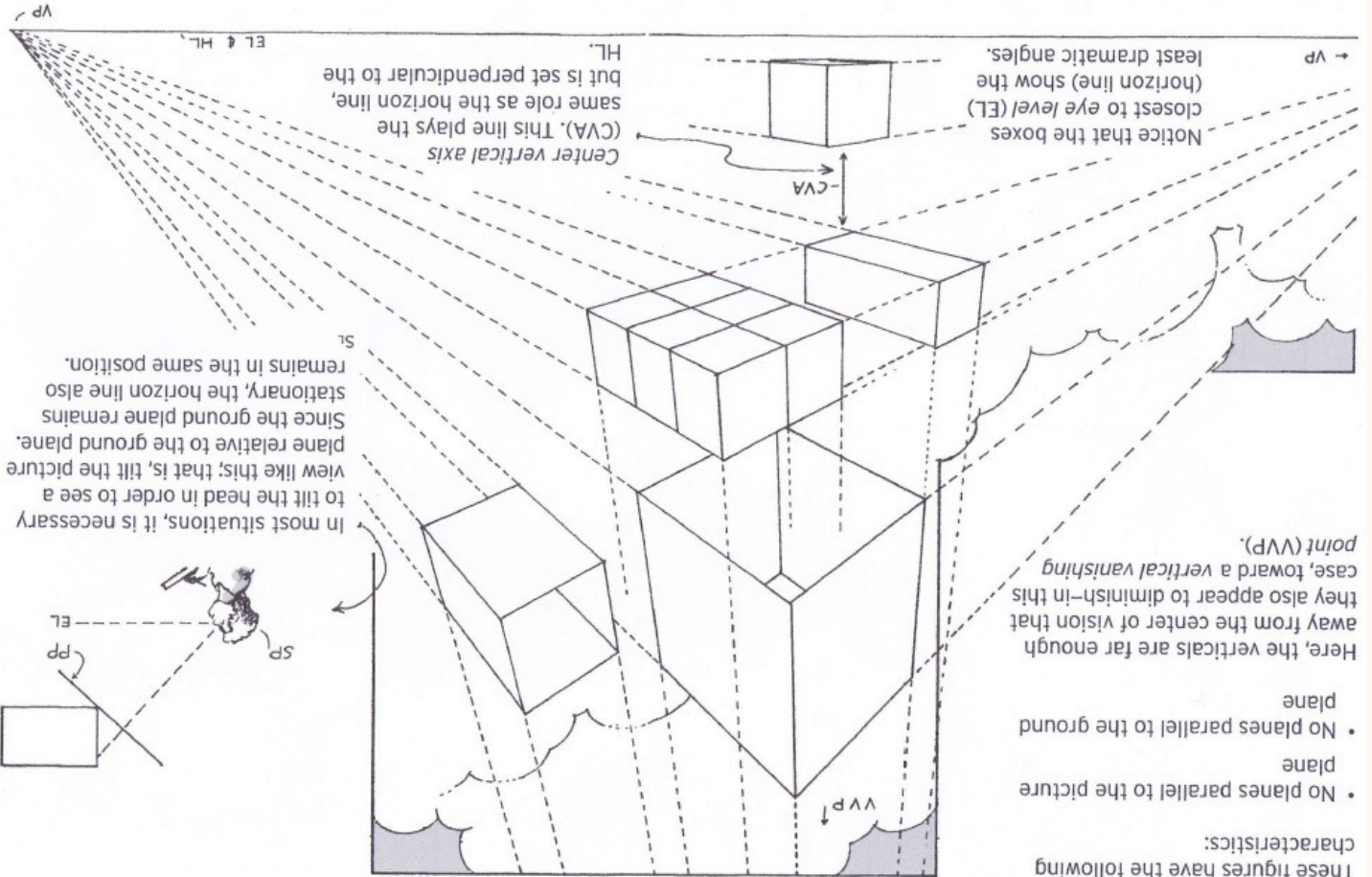
Three-Point Angular or Parallel Perspective

These figures have the following characteristics:

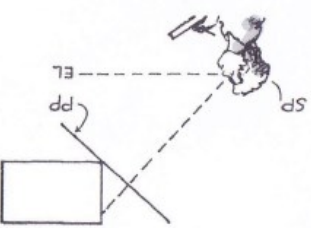
- No planes parallel to the picture plane
- No planes parallel to the ground plane

Here, the verticals are far enough away from the center of vision that they also appear to diminish—in this case, toward a vertical vanishing point (VVP).

Notice that the boxes closest to eye level (EL) (horizon line) show the least dramatic angles.



In most situations, it is necessary to tilt the head in order to see a view like this; that is, tilt the picture plane relative to the ground plane. Since the ground plane remains stationary, the horizon line also remains in the same position.

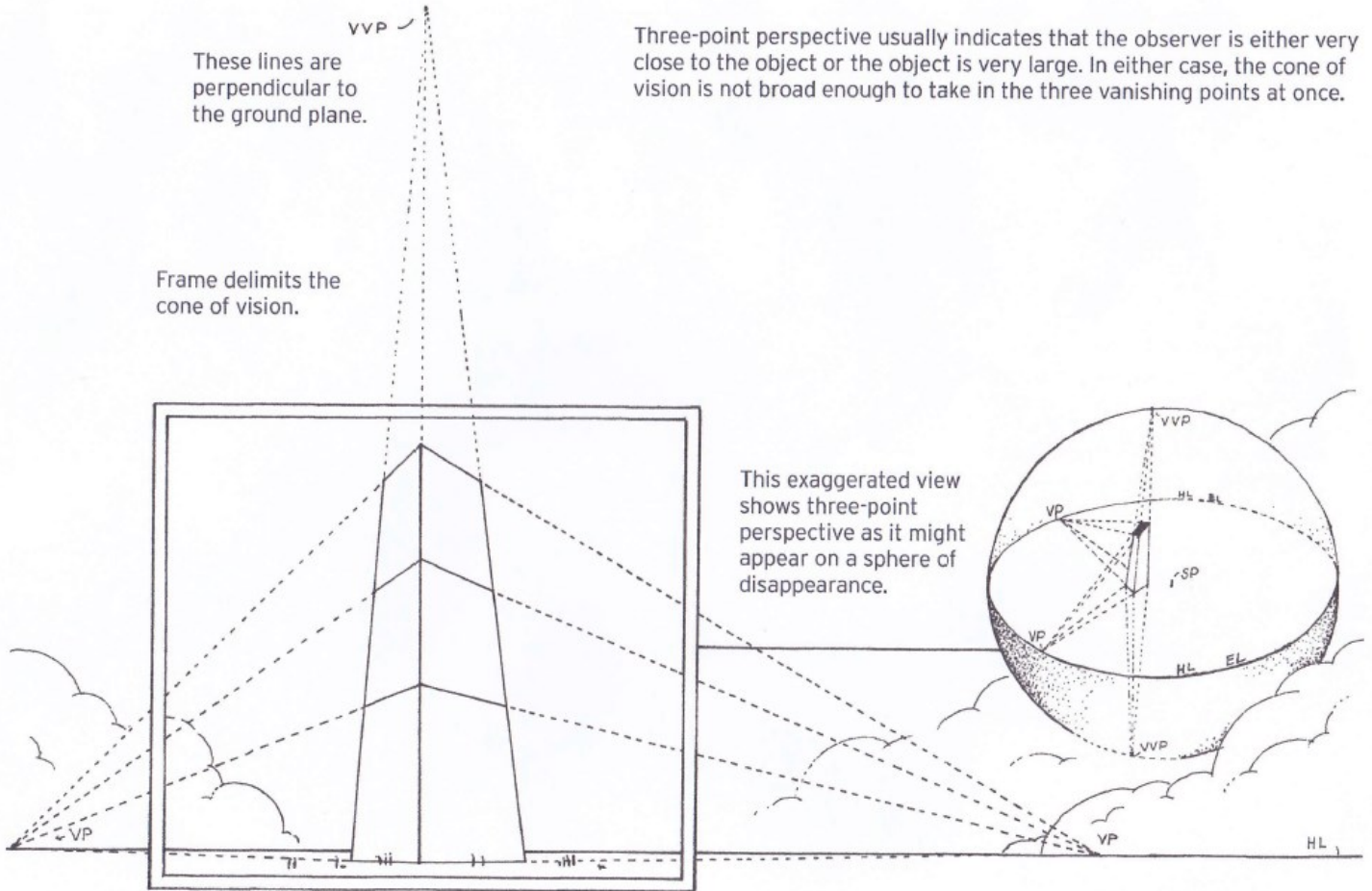


Turn this image upside down for an aerial view of the verticals diminishing downward.

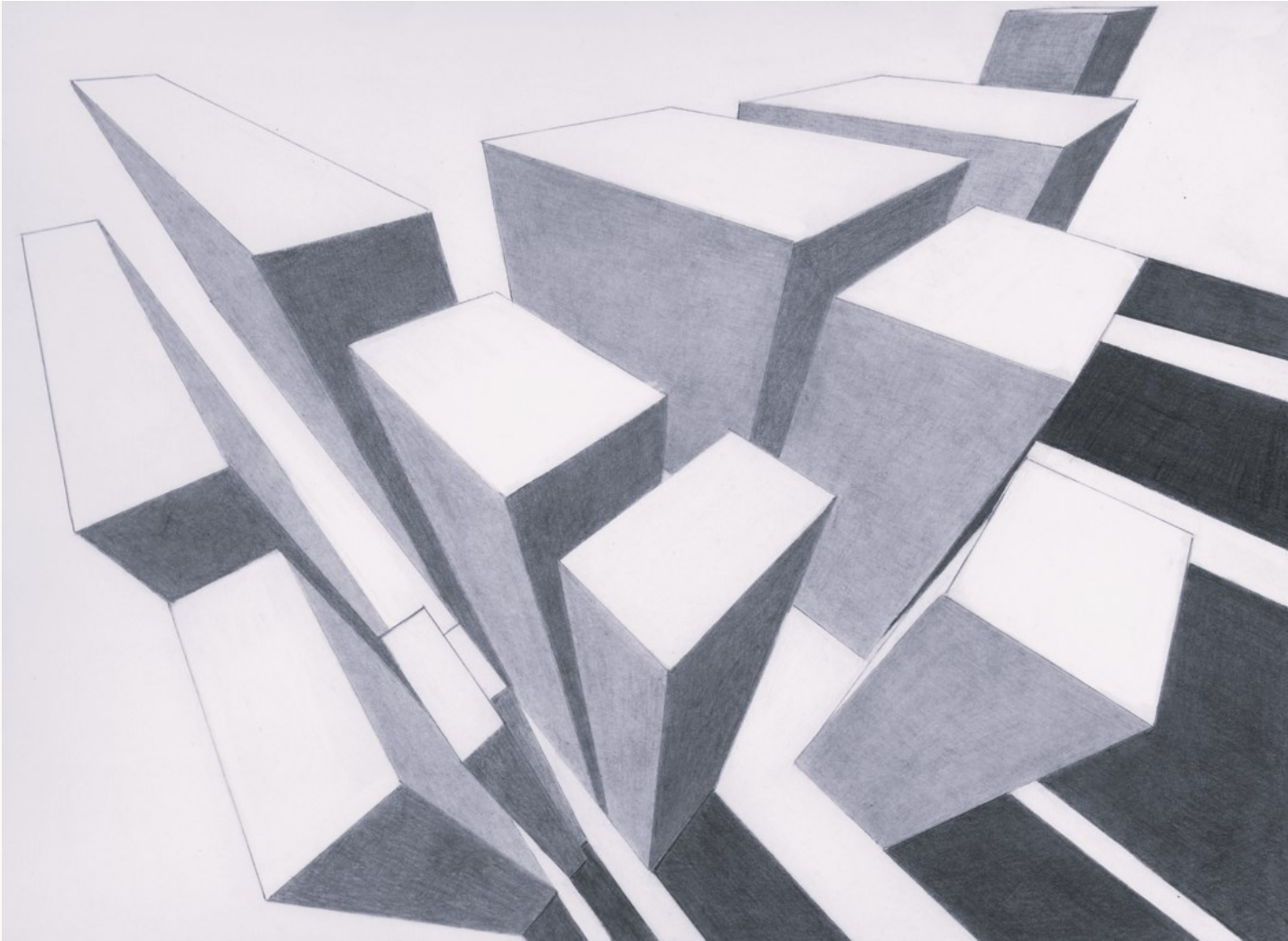
These lines are perpendicular to the ground plane.

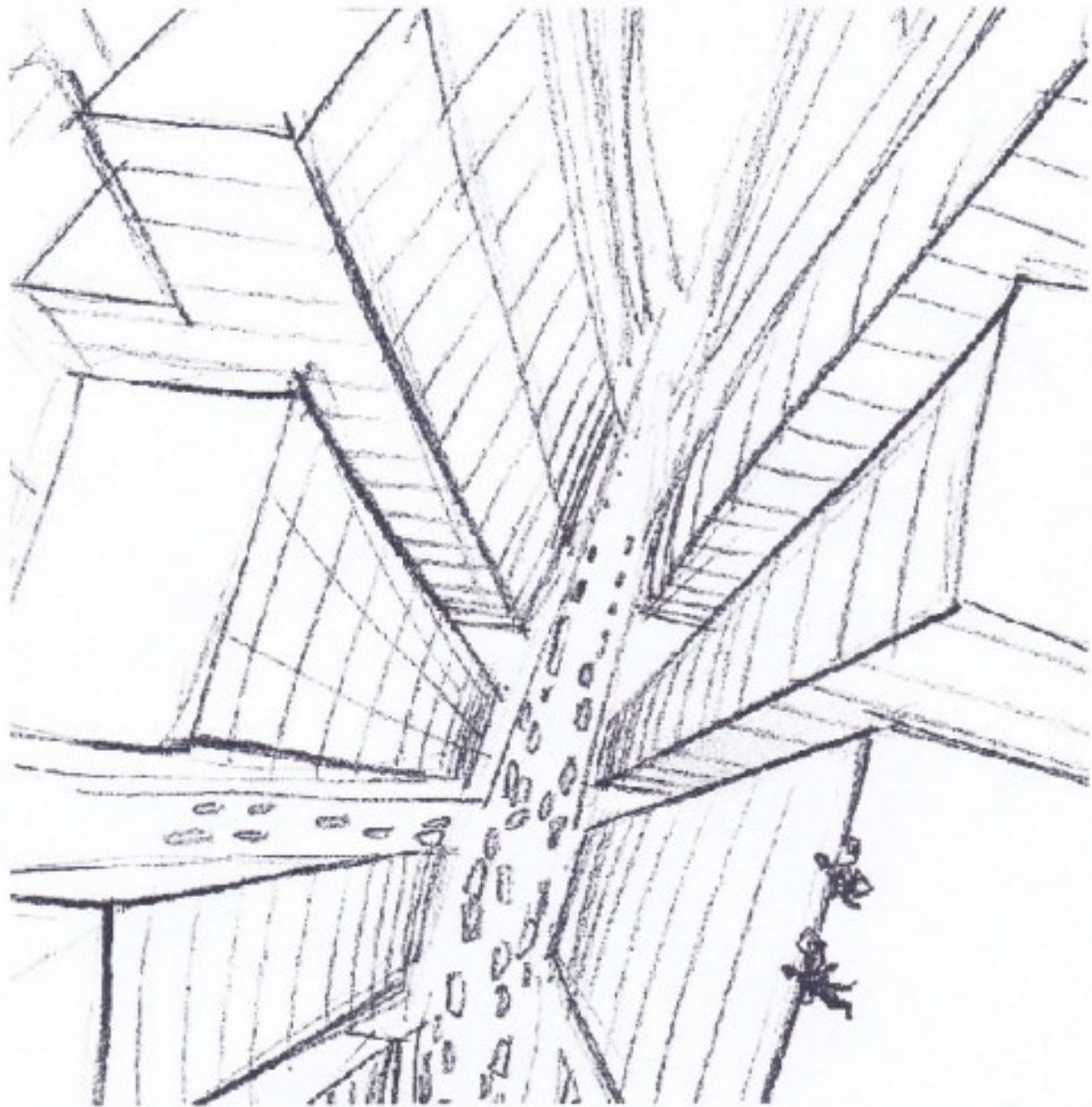
Frame delimits the cone of vision.

Three-point perspective usually indicates that the observer is either very close to the object or the object is very large. In either case, the cone of vision is not broad enough to take in the three vanishing points at once.



This exaggerated view shows three-point perspective as it might appear on a sphere of disappearance.





As you practice 3-D drawing, don't feel you always have to use a ruler. Try sketching in perspective. Play with the concepts. Make mistakes. Enjoy!

SOURCE MATERIAL

BASIC PERSPECTIVE DRAWING, A VISUAL APPROACH
BY JOHN MONTAGUE

THE ART OF WATERCOLOR, A WALTER FOSTER BOOK

WATERCOLOR PENCIL STEP BY STEP, ARTIST LIBRARY SERIES, A
WALTER FOSTER BOOK

DRAW 3-D, A STEP BY STEP GUIDE TO PERSPECTIVE DRAWING
BY DOUG DUBOSQUE



Pat Lentine	A.J. Barr	Hanneke Jevons	Linda Doup DC117 St. Augustine	Bonnie Haney
Kathy Viehe	Bonnie's iPhone (2)	Judy Madigan	Kathi Darby	Katherine McLean
Linda Bishop	Barbara Tobias	Helene Alland	Sue Donze	Joanne Bennett
JOHN ROBAK	Gail Clements	Liz Monaco	Pat Buckert	Louise Cecio
Sharon Shaller	Sharon Meng & Connie Grace	Saré's Deome	Pat Meskell	

Classes Offered by Members

Bonnie Haney

Understanding How to Draw from Live Flowers: The View Arts Center (Old Forge, NY), **virtual-Zoom**, classes recorded. Sundays July 10-August 28, 1:00-3:00 PM EST. Learn how to improve your drawing skill with inspiration from your own fresh flowers or live plants. For full details, go to <https://www.viewarts.org/workshops/fine-arts/>

Hanneke Jevons

Open Studio for colored pencil in my home on Wednesdays and Fridays from 2:00 to 4:00 PM. Space limited to 4 students. Please contact Hanneke at: hannoart@bellsouth.net

Pat Lentine

Colored Pencil and Pastel Artists: If you would like some input on your projects please join us in our online Zoom class. Each student brings to class a project they want to start or have started. Individual input on each project with each student. Class limited to 10 students. Tuesdays 7:00 - 9:00 pm and Wednesdays 1:00 - 3:00 Eastern. Register at my website www.patlentine.com/ or contact Pat at: pat@patlentine.com and 407-758-4437

Kathie Miranda

Bartlett Arboretum Botanical Art Club: In-person. Create a series of work from a yearlong survey of the Bartlett's plants. Monthly (ongoing), 1st Saturdays, 10:00-3:00 EST. Details at <http://www.bartlettarboretum.org/events-concerts> .

Liz Monaco

Colored Pencil Art: In-person, 3 weeks, Thursdays, July 7-14-21, 1:30-3:30 at **River House**, St. Augustine. Register at coasjc.coursestorm.com

Kathi Darby


TBD ~ new classes to be announced.

If you are offering instruction, please let us know so your information can be included in future issues.

It's Not Too Late to Renew or Join!

The new year started **November 1**. But, if you forgot to renew or join, it's never too late ~ **you are always welcome here!** **NOTE: Joining now extends your membership thru 2023!**

- * The most efficient way to renew your **National** membership is to go to the website cpsa.org and renew online. Quick and easy. However, as a courtesy, we are including the National mail-in form below.
- * For the **Chapter**, go to our website cpsa117.org and go to the **Membership** page, where you will find an online form. Then to the **Store** page to pay the \$20. However, should you have any difficulties, simply let us know and we will get you signed up (cpsa117staug@gmail.com). **Thank you!**



CPSA Mail-in Membership Form

2022 Membership Year Ending October 31, 2022

Save time!

Join instantly online at
www.cpsa.org/membership

Use this form only if you are
UNABLE to pay online.

Make check payable to CPSA
(in U.S. funds) and mail
with completed form to:

Colored Pencil Society of America
4157 Mountain Rd #122
Pasadena, MD 21122-4455

PRINT CLEARLY

First Name (if desired, you may also add middle name or initial)		Last Name	
Street Address or PO Box			
City	State/Prov.	Zip/Postal Code	
<input type="checkbox"/> United States <input type="checkbox"/> Canada <input type="checkbox"/> Other Country: _____			
Primary Phone ()	Alternate Phone (if available) ()		
Primary Email Address			
Alternate Email Address (optional) in case we can't reach you at your primary email			
Your Personal Art Website (optional) for inclusion in the "Websites of Members" listing on the CPSA website			

I regularly teach colored pencil classes or workshops and would like to be included on the list of instructors on the CPSA website (updated January and June).
Note: Your website will be listed as how to contact you.

Please check and complete applicable items:

I am a new first-time member

I am renewing or rejoining

I belong to a CPSA district chapter

If so, which one? (City or chapter number):

Membership Payment
U.S. Funds Only*

One-Year Dues

\$45 U.S. and Canada

\$65 All Other Countries

Ten-Year Membership Option (U.S. only)

\$400 membership through October 2031

We welcome donations. Amounts in excess of dues will be considered a donation, and used for CPSA general operating expenses.

*CPSA charges a non-waiverable \$12 returned check fee for any check returned to us by your bank for any reason.

Membership Information

- Membership begins once your payment has been processed.
- Members may renew for the next membership year beginning July 15.
- Current members who fail to renew by December 31** lose their membership standing and forfeit any signature status they have earned.
- New first-time members who join on or after May 1** will have membership standing through October 31 of the following year.

Note to U.S. Members About Bulk Mailings

Your copy of the CPSA magazine will be mailed to the address on this form by bulk mail in November and May, providing your membership is paid as of October 31. Since the USPS **does not automatically forward bulk mail**, please make other arrangements if you'll be away at those times.

CPSA Directory Listings

The annual CPSA membership directory lists members as of January 1. Members will receive an email notification from CPSA when the digital directory is available to download. CPSA prohibits use of member information for promotional purposes without authorization from the CPSA national governing board.

I want a partial directory listing (name, city, state, country only) NOTE: Other members may find it difficult to contact you and you will miss out on special offers from our corporate members.

If you **MOVE** or have further questions, send an email to membership@cpsa.org, write to the address on this form, or choose "Change My Info" under Membership at www.cpsa.org.

2/10/2022

Our Board Members

CPSA-DC 117

President:

Linda Doup

Vice President:

Pat Lentine

Secretary:

Kathy Viehe

Treasurer:

Judy Madigan

Membership:

Kathi Darby

Newsletter/Website:

AJ Barr

Historian:

Kathy Viehe

Publicity:

Jo Ann Eurell

President Emeritus:

Hanneke Jevons

Membership Information

Chapter Membership Benefits:

- Networking with other colored pencil artists
- Participation in sketch groups
- Member discount rate for local workshops
- Chapter newsletter
- Opportunities for exhibits and event participation

A member of the local CPSA DC117 St. Augustine Chapter must also be a member of the Colored Pencil Society of America.

The benefits of CPSA membership are worth it:

- A national newsletter, To The Point, twice yearly.
- Product research, pigment identification, lightfast information
- Lower entry fee for annual CPSA exhibitions
- Lower rate for workshops at CPSA Convention
- International membership networking directory
- District Chapters for local and regional networking
- Free link to your website
- Ability to earn Signature status
- NOTE: Only CPSA members who have attained Signature Status may use the initials CPSA or CPX after their name.

CPSA remains firmly dedicated to the fundamental principles of inclusion and diversity, and to racial justice as an inalienable human right.

Newsletter Contact Info:

For submissions and requests to be profiled, please contact either AJ or Linda.

AJ 386-283-2433

cpsa117staug@gmail.com

Linda 386-295-0486

lindadou@att.net



MEMBERSHIP APPLICATION

New Membership Renewal

Check if you have paid CPSA National

NAME: _____

ADDRESS: _____

CITY: _____ STATE: _____

ZIP CODE: _____

EMAIL: (Please print) _____

PHONE(s): _____ (Home) _____ (Cell)

- Annual chapter dues are **\$20**.
- Membership year runs from November 1st to October 31st.
- Applications for CPSA National can be obtained through the website: www.cpsa.org

GO TO THE WEBSITE cpsa117.org/membership to complete the online form.

Then to the Store page to complete the payment. Thank you!