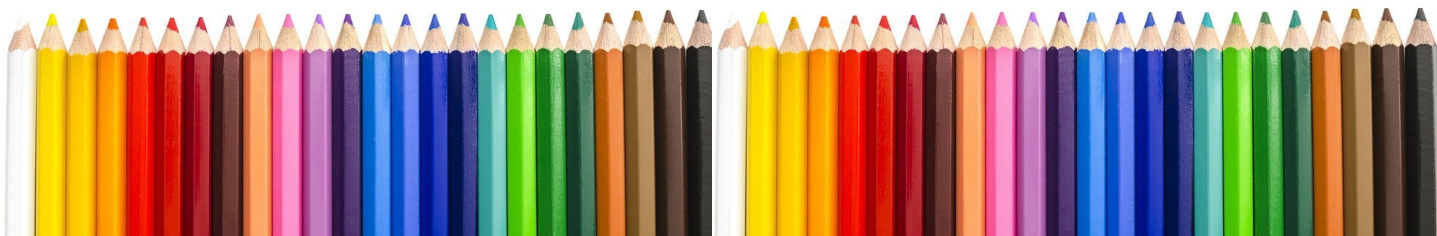


Pressing the Point

June 2021



District Chapter 117 | St. Augustine FL



We meet on the 3rd Sunday of each month at 1:00 PM (except July & August).
Please check the website for any scheduling changes. www.cpsa117.org



DEMONSTRATION

**WOOD
SMOOTH &
ROUGH**

Sunday, June 27, 2021,* 1:00 P.M. EST

**The June meeting will be on the 4th Sunday of the month due to Father's Day on the 3rd Sunday.*

Sit back and relax for our June presentation as Kathi Darby demonstrates two different wood techniques. Kathi will show you how to draw smooth wood with an interesting grain and rough wood such as found in a weathered pier piling. If you want to practice drawing, the **smooth wood** will need red browns, browns, yellows, tans, light warm or cool gray and a solvent or blender. Suggested colors would be: sienna, burnt sienna, chocolate, burnt ochre, yellow ochre, goldenrod and cream. The **rough aged wood** (pier piling) will need dark and light grays, browns, tans, yellows, greens and black. Suggested colors include: dark and light warm grays, dark and light cool grays, dark and light umber, chocolate, cream, marine green and sand. These are just suggested colors and you can use whatever you have on hand. Your favorite white paper will work well for this project.

All chapter members will receive a Zoom link via email prior to the meeting. If you are not a member of CPSA DC 117 and would like to join us for our meeting, please email cpsa117staug@gmail.com so we can send you an invitation for the meeting. Deadline for registering is Saturday, June 26th.

Members: Remember to submit your 2021 Challenge work for May (glass and reflection) to AJ or Pat before the June meeting.

Also, don't forget to sign up at <https://www.cpsa117.org/workshop/> for the Mark Menendez Workshops, July 16-28, 2021.

Registration for the July 2021 Chapter Workshop remains open for everyone.

Don't miss out! Register now!

Go to our website cpsa117.org Click on the "**Store**" page to pay and reserve your spot.

This double workshop is via Zoom, given by renowned artist and instructor **Mark Menendez**.

July 16 (Fri) ~ Color Study (\$70)

July 17-18 (Sat/Sun) ~ Portraits (\$100). Take both or just one.

Includes digital workbooks or printed version available.

Mark gives outstanding sessions
~ Act Now!!

**Welcome
New Members**

[June Meeting](#)

[May Recap](#)

[Wood Supply List](#)

[Member Awards](#)

[Classes](#)

Welcome New Members

We've been a bit remiss of late (due to that thing called Covid!), but we would like to take this opportunity to **welcome** all the "new new" and "new-ish" members.

This listing goes back a few months for some, and just this month for others. But we want you to know how much we appreciate and enjoy your participation with Chapter 117.

One positive thing from the pandemic, we have made friends with so many of you from across the country. Each one of you adds to the dynamics and artist growth of this Chapter. We welcome your suggestions and hope you will share your talents with a demo or program.

Let us know what we can do for you and how we can better meet your expectations. **Welcome!** (if I left anyone out, let me know!)

Pat Buckert

Mark Menendez

Louise Cecio

Kathie Miranda

Patsy Deal

Robin Neff

Bonnie Haney

Trish Pelletier

Renette Jodoin

Monica Ray

Kathy McLean

Marlene Walkes

Chapter Meeting

June ~ So, it's hot and sometimes rainy, welcome to Florida. But for our friends in the West, it's really really hot! Maybe our members to the North are doing a bit better.

The Chapter meeting will be **June 27th at 1:00 pm EST via Zoom** (the Zoom room will open at 12:30). Here's what we will be doing:

- ◆ **Kathi Darby** will be our presenter for a demonstration of **“Wood ~ Smooth and Rough.”** This is a **texture** study, not a full blown project. So, you may simply relax, sit back and observe the demo, **or**, grab some pencils and draw along with Kathi. [Click here](#) for the supply list and sample photo. This is part of the **monthly challenge** program for this year
- ◆ Be sure to submit your **May** challenge photos (glass) or be prepared to hold your piece up during the meeting. Sending in the photo does allow Pat to present a nice “slide” show with screen share. Send to either Pat (pat42@pme.com) or AJ (cpsa117staug@gmail.com).
- ◆ **Rule for the monthly challenge** ~ work must be done from the time of the presentation forward, cannot have been done in the past. Submit prior to the next meeting to be included in a year-end drawing!
- ◆ Of course, please have at hand your work in progress that you would like to share.

Looking forward to seeing everyone at the meeting!

Zoom Info:

Remember, ***an email invitation will be sent to every member or guest with the link for the meeting.*** You will click on the link and then join in. Feel free to invite someone to attend with you ~ **all are welcome.**

To show your work, you can simply hold the piece up in front of your webcam. **OR**, you can email a photo of the piece to either **Pat Lentine** (pat42@me.com) or **AJ** (cpsa117staug@gmail.com) and we will display them for you.

Problems joining that day? Pat (407) 758-4437. AJ (386) 283-2433.

May

May Meeting Recap

There was a whopping **54** folks attending the May meeting. **Thank you all** for your interest and making this a wonderful time of learning and sharing!

Linda Doup, President, welcomed our guests from other chapters and CPPG ~ and introduced the Board members present.

The July 2021 Chapter sponsored workshop with **Mark Menendez** was highlighted by Mark himself (thank you!); he provided more information on his color study materials. Registration is now open to all. The dates again are **July 16, 17, and 18** (Fri, Sat, Sun). Day 1 is a **color study**. Days 2 and 3 will be **portraits**. You may take both or just one of the offerings. **Color/Friday:** \$70 member, \$80 non-member. **Portraits/Sat-Sun:** \$100 member; \$125 non-member.

Kathi Darby gave an overview of her June meeting demonstration ~ “**Wood, Smooth and Rough**” texture study. This will be a more relaxed demo rather than a project; you can observe or draw along with Kathi.

Pat presented the April subtraction submissions which we will have in the next newsletter. For now, thank you Kathi, Sofia, Helene, Judy, Pat, Linda, Mahiba, and Beth.

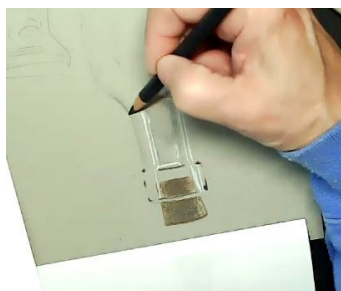
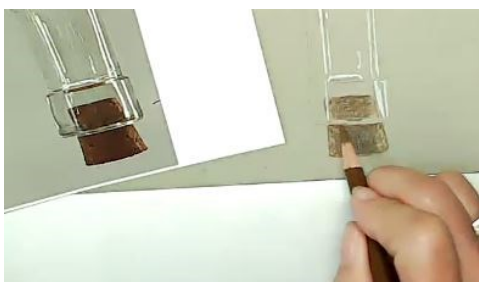
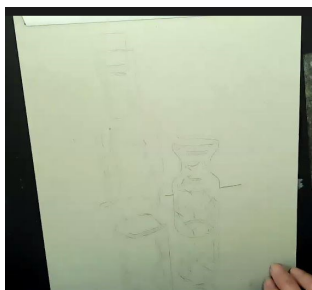
For the program, and monthly challenge, **Liz Monaco** presented an outstanding program on “**Reflections on Toned Paper.**” **Linda** introduced **Liz** highlighting her art education and background and noting her long tenure as an in-demand local teacher. This was a major project and the interest was intense.

What a fantastic meeting ~ and everyone attending made it special. But, our heartfelt **thanks goes to Liz** for all the preparation and hard work. Don't forget to complete your own piece to enter before next month's program!

~~~~~

**Challenge Note:** As before, **everyone** is invited to either submit a photo of your work or you can hold it up during the meeting. Both ways count as a submission for the **monthly challenge**. The one rule is your submission must have been done during and/or after the Chapter meeting (no previously done work). Entry must be submitted the Saturday before the Chapter meeting. Completing each challenge this year makes you eligible for a drawing for a prize (gift card). But, more importantly, it will serve to strengthen your own skill set as you move forward with your colored pencil endeavors.

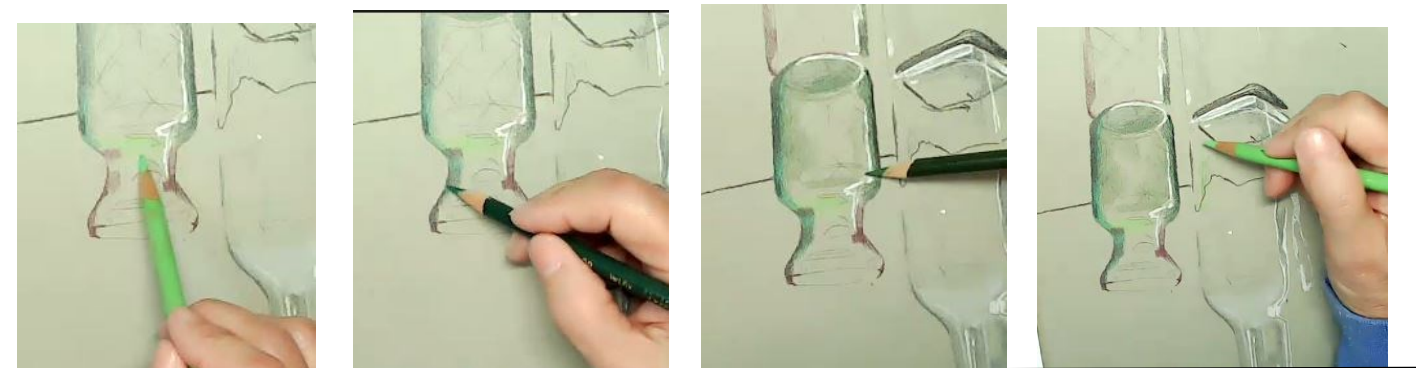
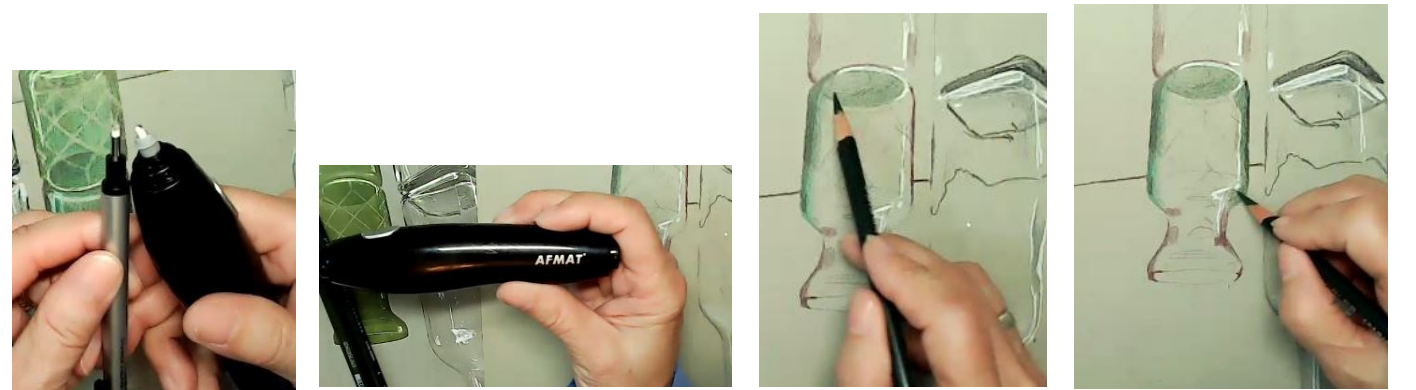
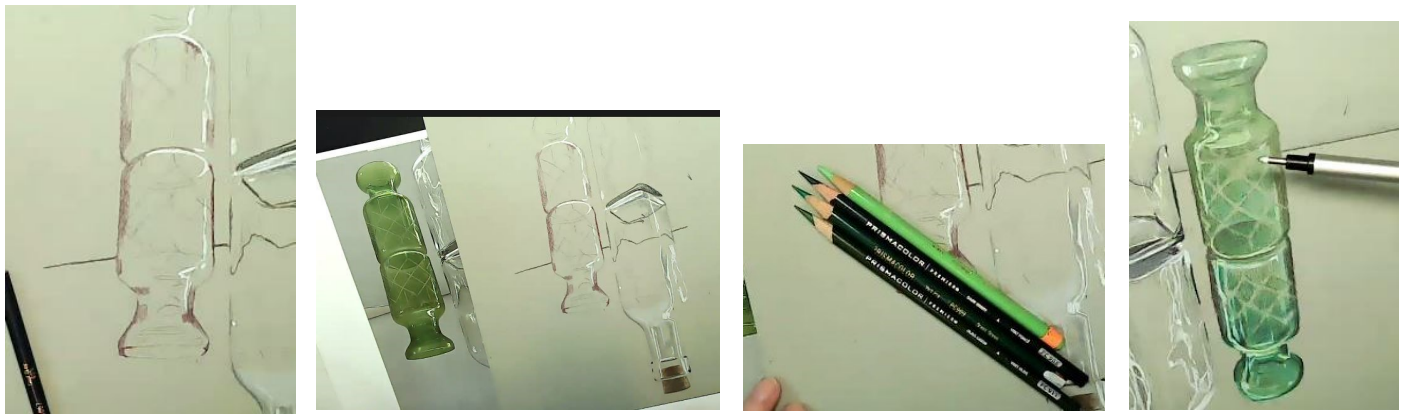
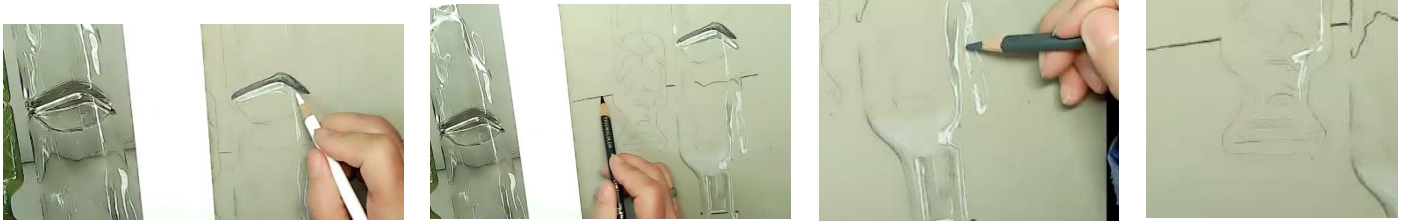
## Reflections on Toned Paper



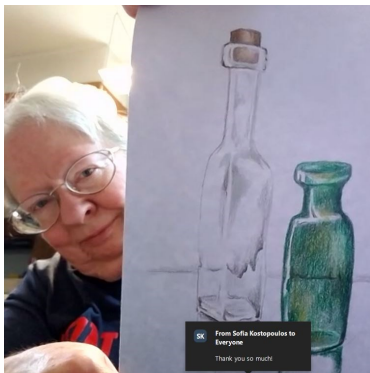
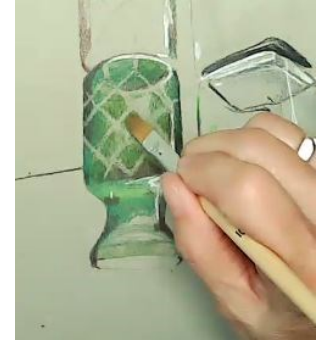
### Tips:

1. Strathmore 400 toned paper, smooth side; gray mid-tone value.
2. Trace lightly.
3. Work upside down! Focus on the shapes.
4. Squint at the reference photo to see the values. Also print B&W photo to emphasize the values.
5. Clear bottle, start with White to make it feel transparent.
6. Imply the edge, no outline.
7. Cork, Light Umber, then Sepia.
8. Cool grays ~ 20%, 70%, 90%.
9. Vary pencil pressure. Work between the values, switch pencils.
10. Don't be wimpy with the darks. Punch up with White.
11. Mirror edge ~ very different, 90% Cool Gray or Sepia.
12. Note the distortion of the background through the glass.
13. Green bottle, start with White. Use Black Cherry, a complimentary color for green.
14. Greens: use light green, 2 medium greens, and 1 dark green.
15. Put Grass Green on top of Black Cherry. Dark Green at base; Spring Green at top. Dark Green for duller effect.
16. The green color is reflected on the clear bottle, Spring Green.
17. Can "etch" the glass with an eraser (Tombow or Afmat electric).
18. Blend to pull shapes together. Colorless blender, press hard, smooth out speckles, helps to pop. But leave White alone.
19. Burnishing, need enough pigment to push the color around; burnish away the tooth. Too much tooth fights the smoothness of the glass.
20. Could use a solvent also.

# Reflections on Toned Paper



## Reflections on Toned Paper



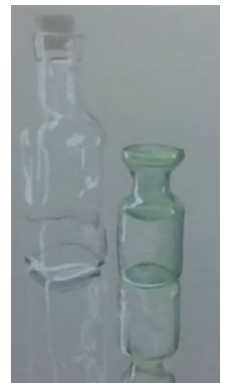
**Kathy McLean**



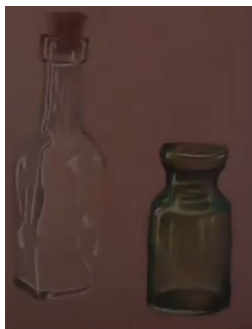
**Linda Doup**



**Jo Ann Eurell**



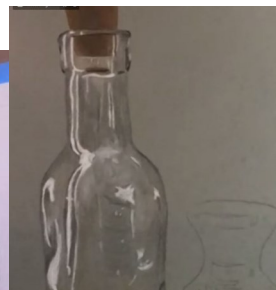
**Helene Alland**



**Pat Buckert**



**Renette Jodoin**



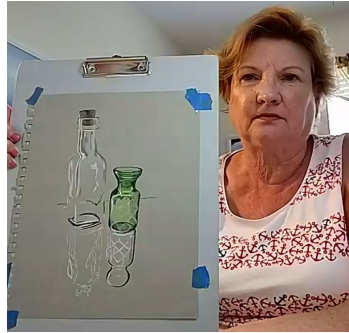
**Kathi Darby**



# Reflections on Toned Paper



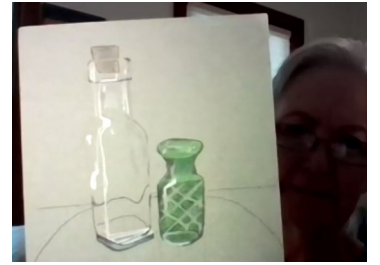
Deome Sare



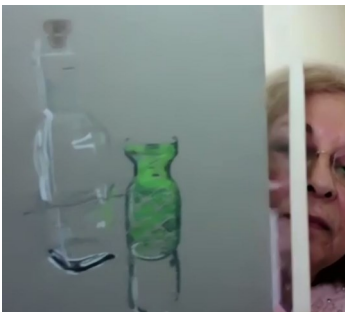
Karen Zier



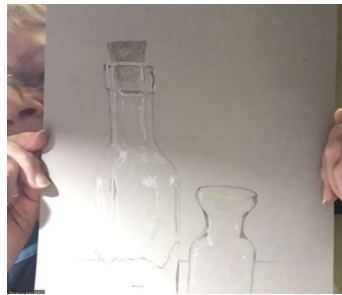
Beth Harper



Lorraine Swann



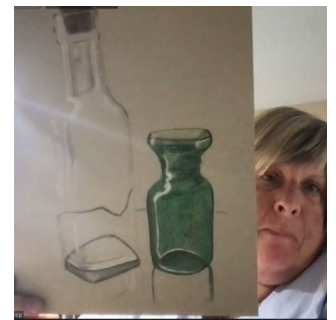
Cindy Feeney



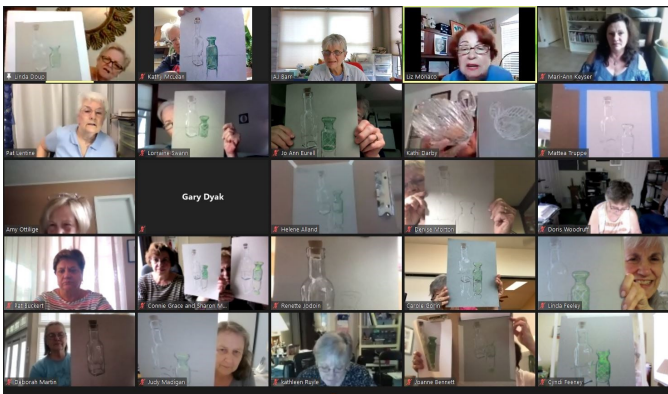
Denise Morton



Judy Madigan



Linda Bishop





## Wood Texture ~ Smooth & Rough

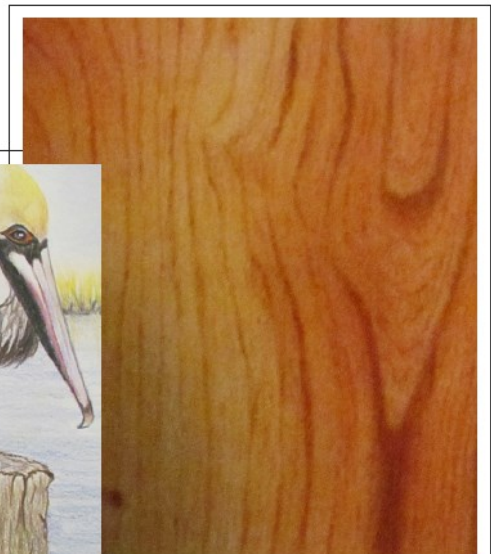
Here is a listing of the suggested pencils that are in the meeting announcement, but perhaps a little easier to read or print. If you would like to draw along with **Kathi**, then pull out some of these colors, or use whatever you have on hand. Your favorite **white paper** will work well with this project.

**Smooth wood** will need red browns, browns, yellows, tans, light warm or cool gray and a **solvent** or **blender**. Suggested colors would be:

- sienna
- burnt sienna
- chocolate
- burnt ochre
- yellow ochre
- goldenrod
- cream

**Rough aged wood** (pier piling) will need dark and light grays, browns, tans, yellows, greens and black. Suggested colors include:

- dark and light warm grays
- dark and light cool grays
- dark and light umber
- chocolate
- cream
- marine green
- sand



DEMONSTRATION

WOOD  
SMOOTH &  
ROUGH

## **Member Awards**

FCAL currently has a virtual show, "***Bird is the Word***," which has the most amazing entries. ([flaglercountyartleague.org](http://flaglercountyartleague.org)) Be sure to check it out.

And you will find that one of our members won the top award!!

### **Congratulations ~ Bob Sena**

**BEST IN SHOW**



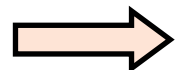
#CP 323020 Crested Caracara

Robert Sena

Colored Pencils On Canson Paper

9.5 " x 12.5 " x .01 "

We also want to recognize other members who entered the show



Artists can have multiple entries; this does not represent all that was entered. Please visit the show to see more. As you can see here, the show included all mediums. It's wonderful to see that our members are talented in many fields.



#WC 324645 Harmony!

**Mahiba Vincent**

Watercolor

12 " x 16 "



#PH 323346 Self Reflection

**Kathy Viehe**

Photography

8.08 " x 6.46 " x



#PH 312914 Its A Beauty

**Hanneke Jevons**

Photography

14 " x 11 "



#PH 317771 Great Egret Flight

**Hanneke Jevons**

Photography

14 " x 11 "

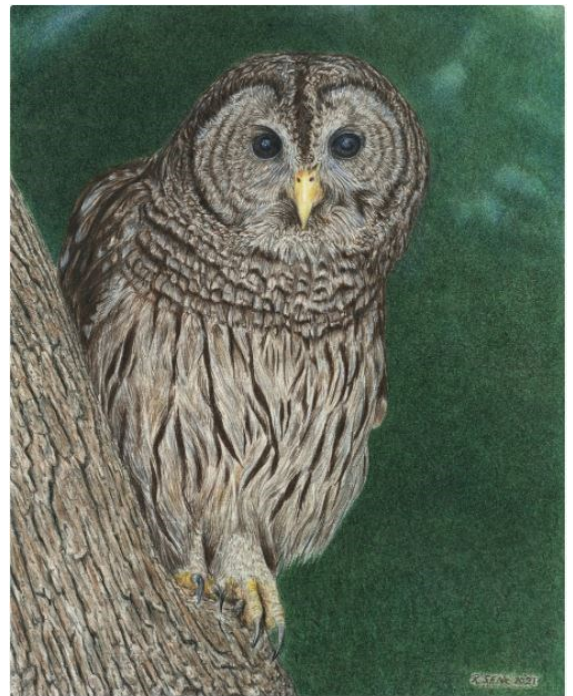


#PH 322721 Pelican

John Guiseppi

Photography

12 " x 17 "



#CP 323012 Barred Owl

Robert Sena

Polychromos® And Prismacolor® Pencils On  
Strathmore Paper

12.5 " x 9.5 " x .01 "



#PH 322720 Bald Eagle

John Guiseppi

Photography

14 " x 11 "



#PH 323021 Cedar Waxwing

Robert Sena

Photography

8 " x 10 " x .01 "

## Classes

### **Classes Offered by Members**

#### **Hanneke Jevons**

**Open Studio** for colored pencil in my home on Wednesdays and Fridays from 2:00 to 4:00 PM. Space limited to 4 students. Please contact Hanneke at:

[hannoart@bellsouth.net](mailto:hannoart@bellsouth.net)

#### **Pat Lentine**

***Colored Pencil and Pastel Artists:*** If you are would like some input on your projects please join us in our online Zoom class. Each student brings to class a project they want to start or have started. Individual input on each project with each student. Students benefit from discussion of their own pieces as well as for other student's projects.

Class limited to 10 students. Wednesday 1:00 - 3:00. Class fee \$10.00/session.

You can sign up each week via my website using this link

<https://www.patlentine.com/on-line-classes-1>

If you are new to Zoom or have questions, please contact Pat at:

[pat@patlentine.com](mailto:pat@patlentine.com) and 407-758-4437

#### **Kathi Darby ~ Flagler County Art League**

***Colored Pencil Series:*** weekly, Monday afternoons, 1:30 to 4:00 pm

\$20/per week members, \$30/per week future members

#### **Liz Monaco ~ Flagler County Art League**

***Intermediate Drawing Series:*** Thursdays, 1:30 to 3:30 pm

\$80 members, \$120 future members

If you are offering instruction, please let us know so your information can be included in future issues.

## Our Board Members

CPSA-DC 117

**President:**

Linda Doup

**Vice President:**

Pat Lentine

**Secretary:**

Kathy Viehe

**Treasurer:**

Judy Madigan

**Membership:**

Kathi Darby

**Newsletter/Website:**

AJ Barr

**Historian:**

Kathy Viehe

**Publicity:**

Jo Ann Eurell

**President Emeritus:**

Hanneke Jevons

**President Emeritus:**

Bill Shoemaker

## Membership Information

**Chapter Membership Benefits:**

- Networking with other colored pencil artists
- Participation in sketch groups
- Member discount rate for local workshops
- Chapter newsletter
- Opportunities for exhibits and event participation

*A member of the local CPSA DC117 St. Augustine Chapter must also be a member of the Colored Pencil Society of America.*

**The benefits of CPSA membership are worth it:**

- A national newsletter, To The Point, twice yearly.
- Product research, pigment identification, lightfast information
- Lower entry fee for annual CPSA exhibitions
- Lower rate for workshops at CPSA Convention
- International membership networking directory
- District Chapters for local and regional networking
- Free link to your website
- Ability to earn Signature status
- NOTE: Only CPSA members who have attained Signature Status may use the initials CPSA or CPX after their name.

CPSA remains firmly dedicated to the fundamental principles of inclusion and diversity, and to racial justice as an inalienable human right.

**Newsletter Contact Info:**

For submissions and requests to be profiled, please contact either AJ or Linda.

**AJ** 386-283-2433  
msajbarr@earthlink.net

**Linda** 386-295-0486  
lindadoup@att.net

### MEMBERSHIP APPLICATION DISTRICT CHAPTER 117 – ST. AUGUSTINE

New Member    or     Renewal

Check if you have paid your CPSA National dues

NAME: \_\_\_\_\_

ADDRESS: \_\_\_\_\_

CITY: \_\_\_\_\_

STATE: \_\_\_\_\_ ZIP CODE: \_\_\_\_\_

EMAIL: \_\_\_\_\_

PHONES(S): \_\_\_\_\_

Annual chapter dues are **\$20**. The membership year runs from November 1<sup>st</sup> to October 31<sup>st</sup>.

Checks made out to: **CPSA-DC117 St. Augustine**

Mail to: Kathi Darby  
13 Bleau Court  
Palm Coast, FL 32137