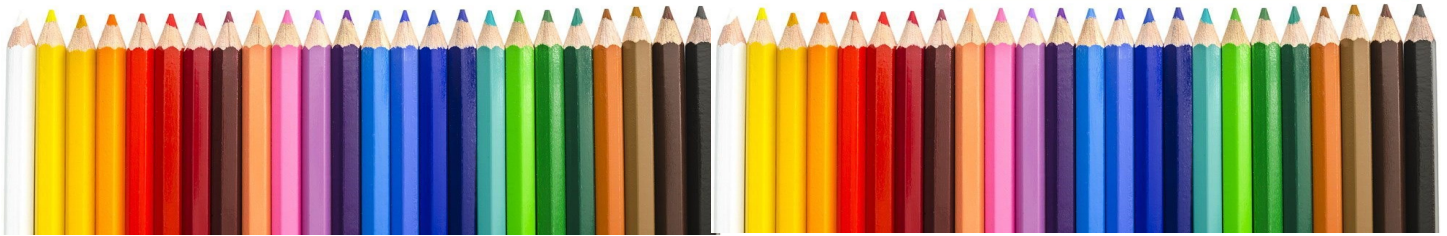


Pressing the Point

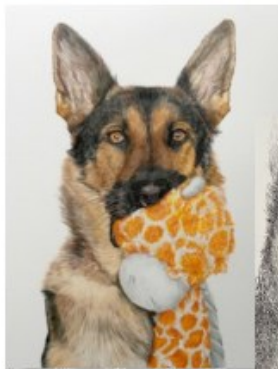
June 2024

CPSA
Colored Pencil Society of America

District Chapter 117 | Palm Coast FL



We meet on the 3rd Sunday of each month at 1:00 PM (except July & August).
Please check the website for any scheduling changes. www.cpsa117.org



Eyes are More Than What You See

Hanneke Jevons, CPSA

Sunday, June 23, 2024*

1:00PM, Eastern Time on Zoom

For June, our speaker is Hanneke Jevons, a founding member of our chapter. Hanneke says: "I have a passion to draw the eyes of my animals, but the challenge is to make them look real **AND** to **SEE** what they **SEE** ... to catch the reflections. I will demonstrate my process which I use to do my eye portraits using the grisaille method in black and white. I will also share color examples. Watch and listen and **SEE**... If you would like to draw along, you will need a graphite 2B drawing pencil and an 8"x10" piece of drawing paper. At the end, if you want to share animal eyes projects...we could have a discussion. More information will be coming."



NOTE: Memberships after May 1 include all of 2025 !!

[June Meeting](#)

[May Meeting](#)

[CP 2025 Cruise](#)

[Reference Photo](#)

[2024 Member Show](#)

[Classes](#)

June ~ “Summer is singing with joy, and the beaches are inviting you with dancing waves .” ~ Dr. Debasish Mridha (Verses of Happiness)

Florida is surrounded by ocean, but for you perhaps a soaring mountain invites you, or a field of wildflowers (TX), the Dells (WI), Lewis Ginter Botanical Gardens (VA), Powder Mills Park (NY), the Coast from Coronado to the Redwoods (CA), the Bartlett Arboretum (CT), or Riverfront Park (WA). How fortunate are we that our membership stretches from coast to coast, and border to border. As you enjoy the summer, take time to capture those special sights and people with your art. And share your adventures in September!

- ♦ **Program** ~ Get ready to draw along! **Hanneke Jevons** will present “**Eyes are More Than What You See**” ~ delving into animal eyes. She will explain and demonstrate how to capture the reflections in the eyes, to make them really **see** to the viewer. Hanneke is an award-winning wildlife colored pencil artist with a CPSA Signature status. *See reference photo on next page.* Don’t miss this mini-workshop!
- ♦ **Inspiration** ~ **John Robak** has volunteered to write an article for **To the Point** based on last month’s program, “What or Who Inspires You.” Please email (jwrobak@bellsouth.net) your brief write up, photo welcome. This is a **last call!**
- ♦ **Logo Search!** ~ It’s not too late to submit your ideas or even artwork for a new chapter logo. The deadline is June; more details will follow.
- ♦ **Facebook** ~ We would love to have you join us on Facebook. This is a great forum to share your works in progress. It is an opportunity to share your insights as well as pick up a few tips. We hope to see you there!

We look forward to seeing everyone at the meeting !!

Reference Photo ~ Eyes are More Than What You See

Transfer to paper if you wish to follow along with Hanneke.



2025 Colored Pencil Cruise On Celebrity Equinox



7 Day Eastern Caribbean Cruise Departing Port Canaveral on March 29, 2025 Returning April 5



Itinerary

- Day 1 Saturday March 29 -Port Canaveral Depart: 3:30 PM
- Day 2 Sunday March 30 - At Sea
- Day 3 Monday March 31 - Puerto Plata, Dominican Republic
- Day 4 Tuesday April 1 - San Juan, Puerto Rico
- Day 5 Wednesday April 2 - Philipsburg, St Maarten
- Day 6 Thursday April 3 - At Sea
- Day 7 Friday April 4 - At Sea
- Day 8 Saturday April 5 - Arrive back at Port Canaveral

Classes, Seminars and Workshops offered during 3 days at sea

Guest instructors: Bonny Snowdon and Pat Lentine

Registration Link: https://gotravelinc.formstack.com/forms/pencil_art_2025

For information Contact: Peter Kushner, (508)208-6136, peterkushner@me.com

Here is a clickable link from the flier:

https://gotravelinc.formstack.com/forms/pencil_art_2025

CPSA-DC117 Member Exhibition

Colored Pencil Expressions

Announcing our next Member Exhibition! We would love to see at least one entry from each member ~ this would be a wonderful feature going into our **20th anniversary year**, something that we can share with our fellow chapters across the country. The show will be both in the gallery and online as we have done before.

So, prepare your pencils, you have a whole summer to create. See the **prospectus** (next page) for all the particulars.

Expressions Art Gallery

(Grand Haven Realty, 2298 Colbert Lane, Palm Coast, FL)

Key dates:

- **Exhibition October 6 - November 16, 2024**
- Registration July 1 through September 22
- Entry deadline September 22
- Drop off October 2, 5:00 pm
- Reception October 6, 1:00-3:00 pm
- Pick up November 17, 10:00-12:00 pm

CPSA-117 Annual Member Exhibition

Colored Pencil Expressions

October 6 – November 16, 2024

Expressions Gallery

Grand Haven Realty, 2298 Colbert Lane, Palm Coast, FL
Gallery hours are Monday thru Saturday, 9:00 AM – 5:00 PM
Questions/emergency – Hanneke Jevons (386) 447-4744

Prospectus

1. This is a show for chapter members only; there is no fee to enter.
2. This is a dual show in-person at the local gallery and online.
3. Five submissions per member are permitted.
4. The gallery has a limitation of approximately 50 pieces to hang. The artist must indicate the priority of each piece to be hung if not all entries can be accommodated; however, all entries will be displayed online.
5. **Registration** will open **July 1** and go through **September 22, 2024**.
6. Submit your registration at cpsa117palmcoast@gmail.com. Include the following: your name, title of each entry, the dimensions (include the frame if local), and sale amount or indicate NFS (not for sale), and a photo.
7. Photos must be submitted not larger than 5 Mb and without any framing in the photo.
8. Works must have been completed in the last **5 years** and be either:
 - A)** 100% colored pencil on a manufacturer-prepared surface per the CPSA National International exhibition specifications, **OR**
 - B)** follow the “Explore This” specifications where the piece is predominantly colored pencil, but includes another medium (ink, pastel, w/c, etc.), collage, artist prepared surface, 3D surfaces, or any other technique, surface, or element that is not allowed for the CPSA International exhibitions.
9. Works that will be hung in the gallery must have a securely attached wire (not the alligator clips); also, please ensure your piece/matting is securely affixed to the frame.
10. The **opening reception** will be held on **Sunday, October 6, 2024, from 1:00 to 3:00 PM**. The drop off at the gallery is **Wednesday, October 2 at 5:00 PM**. Pick up will be **Sunday, November 17, 10:00-12:00 PM**.

May 2024 Chapter Meeting

Pat Lentine, Vice President, welcomed everyone and introduced the Board members.

Hanneke Jevons spoke about her presentation for the June meeting featuring an aspect of pet portraits, “Eyes are More Than What You See,” catching those reflections, to make them real, to see what they see.

AJ welcomed new members; it’s wonderful to see our chapter grow.

John Robak, who has written many articles for “**To the Point**,” offered to compile everyone’s inspirations for the publication, commenting that Vera Curnow would like to see articles like this. Besides showcasing our chapter, our inspirations can, in turn, inspire other chapters. Thank you, John.

This purpose of this meeting is to create a conversation among the members to both get to know each other better and to share their inspirations. This is something that a group would do naturally if meeting in person. In our Zoom-era, we need to make the effort to simulate that experience to keep our connections strong.

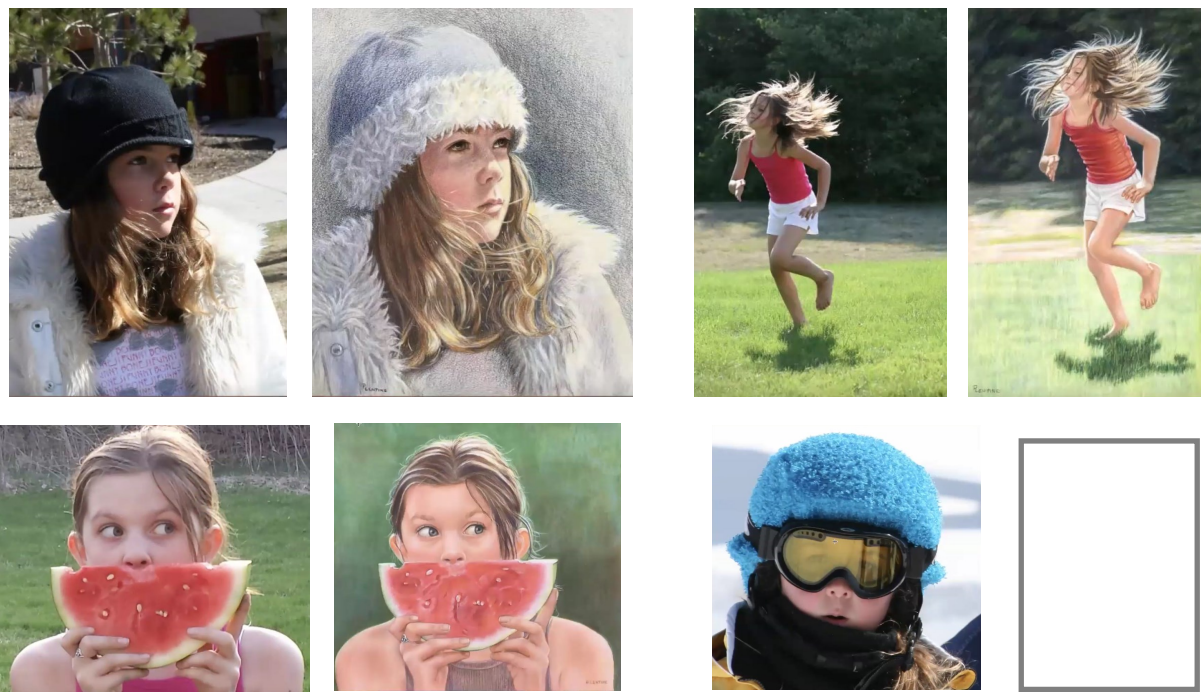
Pat led off the program by sharing one of her early inspirations, Norman Rockwell, often not considered a true artist! Her first books were by Bet Borgeson and Bernard Cohen. Mary Engelbreit’s use of color drew Pat in. **Color and light** are Pat’s main inspiration. Nancy Noel was an early portrait find; Pat collects her prints. Lucelle Raad is another favorite artist. Pat has two Robert Hagan books; Hagan is an oil painter and his style is very loose. A recent discovery is Bev Jozwiak, watercolors in a very loose style; she has heavy color on top that fades out towards the bottom, and she uses ink as well. Here are some book covers:



Following are some of Pat's favorite images from these artists:



So, how does this translate into art for Pat? Pat also derives inspiration from her own photographs. Following are examples of her finished, and future, award-winning artwork, the photo and the art:



Hanneke Jevons has been a phenomenal animal lover from childhood. She has raised horses, dogs, and cows. Her early art training, mostly abstract, had nothing to do with her current passion; she loves to draw realistically. In 1995, she went to her first wildlife workshop and met Art Lemay and other wildlife artists, who were making a living drawing animals. And that started her journey to draw animals, first in graphite, focusing on endangered species. Hanneke is an avid photographer, the photos being her inspiration and the pencil drawing to bring out the character and spirit of the animal. The animal portraits are what earned the CPSA Signature status. Her current focus is to tell a story with the drawing rather than just doing a portrait. The journey has led to an interest in animal eyes, which will be Hanneke's program in June. The most important person, and inspiration!, was **Bill Shoemaker**, whom she met 20 years ago and took a colored pencil class; this was the turning point to colored pencil and the founding of this chapter.

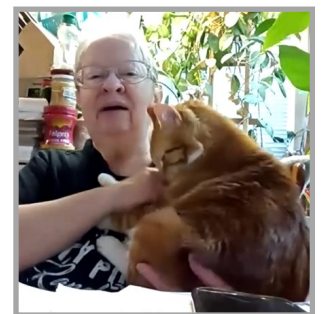


Pat noted that as colored pencil artists we are drawn to detail. But the looser style has gotten notice lately. Pat has come full circle and has returned to more detail. Hanneke agreed, she also has come full circle, returning to the realistic detail. After retiring from education for 30 years (art teacher to principal), she is following her passion and interests. There was a group discussion on the looser style, not blended as well, fewer details, more impressionistic.

Kathy McLean was inspired by many folks in her past, but especially her parents who always encouraged her in the arts. She had worked for the Washington Transportation Department, and because of her move she joined the NW Science Fiction Society, which always had an art show. She was blown away by the detailed illustration art work. Her



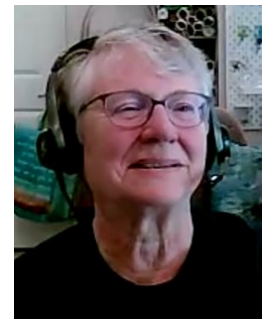
first colored pencil inspiration was Bart Ferrari. Later, Kathy became a CPSA member and met Bet Borgeson, who upped her game; later more classes including Gary Green. Kathy entered some art shows. Artist Jan Henderson (acrylic artist) caught her attention. **Ultra-realism** is a joy for her.



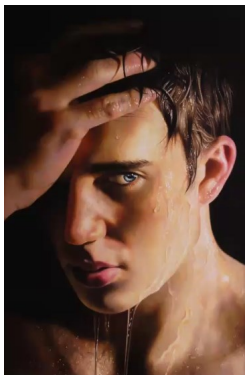
Mattea Truppe's inspiration is her **garden**. From a photograph of a Monarch butterfly that they released, a colored pencil drawing came to life. Garden plants, butterflies, close friends, keep inspiring her. Mark Menendez' art blew her away, she calls him the superstar of colored pencils. Mattea loves the bright colors of Mary Engelbreit and her carefree style. Mattea would emulate Engelbreit's border patterns in her letters. A good friend of Mattea says "Do what you love and the rest will follow." She is also inspired by the Miniature Society exhibitions. Her first real colored pencil inspiration was 4 years ago when they first arrived at the Villages and went to the recreation center art gallery. She "freaked out" when she realized that she was not looking at photographs, but colored pencil art. Soon after, Mattea joined the CPPG, taking Zoom classes during Covid. She loves going to Home Depot to the garden department and taking photos; she is now working on a miniature of a flower.



Jo Ann Eurell's colored pencil journey started during the pandemic, stuck at home. She wanted to learn more about colored pencil for her lace work and started taking classes; a first was with Ann Kullberg. Having a career as a veterinarian, Jo Ann loves **animals**.



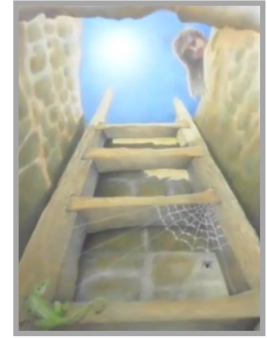
She wanted to learn more about techniques to become a better animal artist. She took some classes from Gemma Gylling, working on pastemat. Then she saw a portrait that just stuck with her; turns out it was by Jesse Lane, "**Resolve**." Jo Ann was fascinated that Jesse would layer up to 80 colors in a piece and wanted to find out more. She was taken by the blue eyes and the lighting, so she took some classes. Having been in the academic world, Jo Ann is a continual learner and keeps pursuing new techniques. Images that stand out and stick in her head are her inspiration.



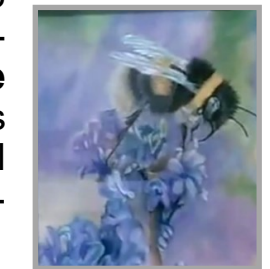
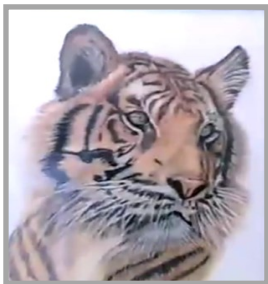
Beth Wong is new to colored pencil, about 6 months. Looking to fill her time and taking **pictures** in St. Augustine, she became interested in colored pencil. Beth also watched a number of YouTube videos where she was inspired by the work of others. Using her photos, she began to draw, for example, the Bridge of Lions and the Matanzas Fort. Beth also gains inspiration from her fellow chapter members! Hanneke extended an invite to join the casual



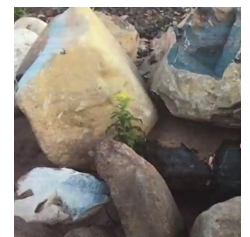
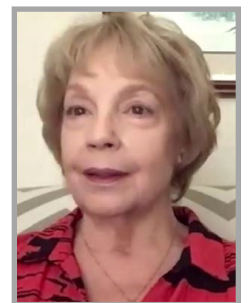
group in her home. Here are Beth's Bridge of Lions and Matanzas Fort, with a boy unexpectedly poking his head over the opening, making a great photo!



Connie Krupp started out in watercolor in high school and was motivated by **Vincent Van Gogh**; she has seen his work in Paris and Amsterdam. Her high school teacher, Mr. Winkler, recognized her talent with painting, entered her work in some shows, and never forgot how he believed in her. Connie took watercolor specifically to get a looser style. She found Kristy Kutch and took some week-long workshops; Kristy's focus is flowers, which Connie is working on one now. Connie is also inspired by **Pat Lentine**; she met Pat while wintering in New Smyrna Beach and took some classes. Pat helped her with the deer drawing and continues to encourage her art; Connie is enamored with backgrounds! Connie is also a member of **Bonnie Snowdon's** Academy, which includes Bonnie's confidence sessions. Connie is enjoying the animal sessions with Bonnie, particularly utilizing the recorded sessions where she can take her time.



Jane Stankowicz loves the **photo-realism** of colored pencil. She doesn't have an art background, but fell in love with colored pencil the moment she first saw it and has been doing colored pencil for 5 or 6 years. Jane is inspired to paint by things that tell **a story**, whether people or scenes. For example, a picture of big rocks with a tiny flower peeking out became "Never Give Up." Jane shared some photos of grandsons and a granddaughter that inspire her art ("Eyes on the Ball"). **Scenery** is also important as an inspiration. She also is a member of the **Bonnie Snowdon Academy** and enjoys continuing to learn. Jane also took a **Mark Menendez** class in the Villages, appreciating his mastery, being able to simplify the process, and how he imparts confidence to the students.

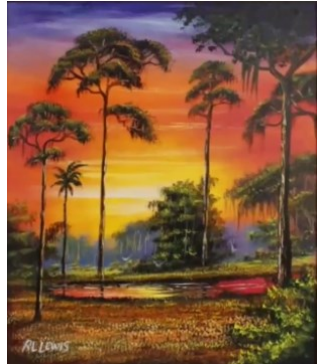


AJ Barr's first inspiration was **Bill Shoemaker**. Upon moving into the area, she had a neighbor who was a member of this chapter at the time. He had a dog portrait that completely captivated her. She inquired how did you do that? His reply was "go see Bill." So, AJ attended her first CPSA chapter meeting, met Bill, and shortly after started attending every class that Bill offered.

A few years back, AJ had a commercial pottery studio (classes, gallery, supplies), that soon expanded into other mediums with kid's summer camp. One area of particular interest to her was the **Florida Highwaymen**, a group of 26 African-American landscape artists, with some instruction but mostly self-taught, who sold their art to escape the drudgery of working in the fields, literally on the highways of old Florida (1960's to 1970's). It was not just their art that caught her interest, but the difficult and dangerous circumstances under which they persevered. Today, their \$10 paintings are worth thousands and part of important collections and exhibitions.

AJ was concerned that these kids knew nothing about this significant regional art movement unique to Florida, and began to teach. Over time, AJ got to know some of the artists, and eventually took a workshop with **RL Lewis**, who was very inspirational. The freedom with which the Highwaymen depicted a Florida, now mostly paved over, became a further influence. A couple of years ago, AJ was part of a public sculpture movement in Palm Coast (the Turtle Trail) and was the artist for one of the turtles which she entitled "**Journey**." to honor the journey of these intrepid artists.

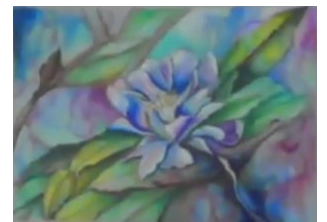
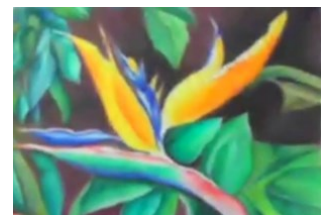
The turtle depicts some of the iconic scenes that the Highwaymen painted, and now resides in the Government Services Building in Bunnell. So, the next time you go to pay your taxes or renew your drivers license, take a look at Journey. AJ noted that you never know where your inspiration will lead, or how long the path may be, and that there never really is an "end" to the journey. **People, colors, animals, the stories** ~ that's what inspires AJ.



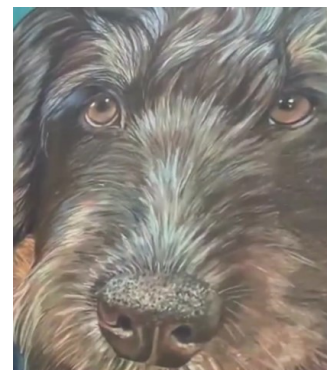
Sare Deome has always loved drawing, especially horses, and painting; she took art classes in high school. But her real inspiration was her **mother** who was an artist and painted for many years and owned the Hansel & Gretel Shop in New Hampshire. When Sare's mother passed away in 1980, she inherited all her brushes and paints; Sare began to take classes seriously, acrylic, oil, bronze on metal, anything she could learn. Sare is still an avid art student today. She is also a **Bonnie Snowdon Academy** member and loves **Mark Menendez** and takes classes with **Pat Lentine**. She hopes to go on the cruise to experience Pat and Bonnie, two favorites! Sare likes sharp focus in her works and florals. She started colored pencil a while back in Utah, where the focus was realism. Sare is more loose with her watercolors but continues to love the realism through colored pencil. Sare shared that she has Parkinson's and needs to keep busy. So, in January she took up photography which provides the reference photos that she needs for her art. She has joined the St. Augustine Camera Club.



Bonnie Haney was recently inspired by the **K-9 dog portrait** project, but wanted to take a different approach. Bonnie is a well known botanical artist, which is very tight and realistic. She was inspired by oil paintings that have a lot of **color splashes**, so, for the dogs she started with **AI** to get a geometric approach. Bonnie worked in Derwent Inktense, activating with water, first practicing with some flowers, but much looser than the normal botanicals, and even adding in pastels. Bonnie shared the joy of **experimentation** and learning new techniques to find a totally new manner of expression,

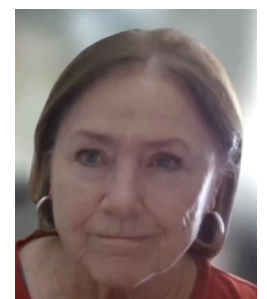


For **Gail Clements** it's all about the **natural world**, she is outside as much as possible, always with her phone at the ready to take pictures. **Peggy McGovern** is an artist that inspires Gail, the works are beautiful, the color striking, and the style is very loose. In a McGovern class, drawing a puppy, Gail discovered color where you don't think there is any, all while using a very limited number of pencil colors. Gail discovered colors hidden in the fur. McGovern uses only 17 of the Prismacolors. This is a real challenge as Gail considers her art to be very tight and precise. A goal of Gail's is to loosen up, perhaps by taking watercolor classes.



Pieter Van Wamerdam started art long ago at age 6, although he wanted to be a pilot. However, during the Japanese occupation in Java, he suffered brain damage and had to take a different path. Pieter went to trade school to learn machine drafting and drawing and went to work. He had no time to spend on art until coming to the US in 1957. He married Gwen and joined an art guild in Shrewsbury where he was encouraged to paint in oil, then tempura. His life up to then had been black and white, graphite and ink. Pieter gravitated to **Rembrandt**. He has a pile of waiting art; and wants to do a painting of Gwen who passed away 2 years ago. He did some plein air in the Netherlands, beech trees in a meadow with deer, but would like to do this in colored pencil.

Priscilla Humay doesn't like to talk about her art that much, but shared that she has been painting since she was 3 years old. Her grandfather was a sculptor; her dad designed machinery with detailed drawings, which was an inspiration for her. She also remembers being in the yard as a child looking up at the sky, enjoying nature scenes, being inspired by what she loves. Priscilla studied art in college and her career took off from there.





Being able to meet and collaborate via Zoom is a wonderful thing and we all appreciate the technology. However, we all miss that one-to-one interaction of being in-person, being able to really get to know one another.

Pat's goal was to bridge that divide and provide a forum to reach out, share, and inspire each other. Pat met that goal!

Thank you, Pat (and cat), for hosting this most memorable session. So unique and insightful, we got to know each other in a way that we would not have without you providing this forum.

Send in those inspirations:

John Robak email: jwrobak@bellsouth.net



20% Discount on Airfloat StrongBoxes

May 13, 2024

I'm pleased to announce that Airfloat Systems is offering **CPSA members** a 20% discount on all StrongBoxes. Whether you're shipping art to the CPSA International Exhibition in Brea, California, this summer or anywhere else, you'll want to take advantage of this!

Place your order at their [website](#) and enter the code **CPSA24** for a 20% discount.

As a membership benefit, this discount code is for **CPSA members only** and should **not** be shared with anyone else. The offer is good indefinitely.



Melissa

Melissa Miller Nece, CPSA, CPX
Corporate Relations Director
Colored Pencil Society of America



Classes Offered by Members

Hanneke Jevons

Open Studio for colored pencil in my home on Wednesdays and Fridays from 2:00 to 4:00 PM. Space limited to 4 students. Please contact Hanneke at han-noart@bellsouth.net

Pat Lentine

Colored Pencil and Pastel Artists - online Zoom classes: Each student brings to class a project they want to start. Individual input on each project. Class limited to 10 students. Tuesdays 7:00 - 9:00 pm and Wednesdays 1:00 - 3:00 Eastern. Register at my website www.patlentine.com/ or contact Pat at: pat@patlentine.com and 407-758-4437

Mixed Media Painting & Drawing: The Artists' Workshop of New Smyrna Beach, Mondays, 5:00 - 7:00 PM. This class is for students of all levels who want to improve their skills in colored pencil, pastel, acrylic, and watercolor. Pat will help you figure out how to start, make decisions, solve problems, and give finishing touches to your projects. Contact: pat@patlentine.com and 407-758-4437

Priscilla Humay

Teaching at Ormond Memorial Art Museum (ormondartmuseum.org)

Kathi Darby

Teaching at Ormond Memorial Art Museum (ormondartmuseum.org)

**If you are offering instruction, please let us know
so your information can be included in future issues.**

Our Board Members

CPSA-DC 117

President:

Judy Madigan

Vice President:

Pat Lentine

Secretary:

Priscilla Humay

Treasurer:

Kathi Darby

Membership:

Linda Doup

Newsletter/Website:

AJ Barr

Historian:

Kathy Viehe

Publicity:

Jo Ann Eurell

President Emeritus:

Hanneke Jevons

Membership Information

Chapter Membership Benefits:

- Networking with other colored pencil artists
- Participation in sketch groups
- Member discount rate for local workshops
- Chapter newsletter
- Opportunities for exhibits and event participation

A member of the local CPSA DC117 St. Augustine Chapter must also be a member of the Colored Pencil Society of America.

The benefits of CPSA membership are worth it:

- A national newsletter, To The Point, twice yearly.
- Product research, pigment identification, lightfast information
- Lower entry fee for annual CPSA exhibitions
- Lower rate for workshops at CPSA Convention
- International membership networking directory
- District Chapters for local and regional networking
- Free link to your website
- Ability to earn Signature status
- NOTE: Only CPSA members who have attained Signature Status may use the initials CPSA or CPX after their name.

CPSA remains firmly dedicated to the fundamental principles of inclusion and diversity, and to racial justice as an inalienable human right.

Newsletter Contact Info:

For submissions and requests to be profiled, please contact either AJ or Linda.

AJ 386-283-2433

cpsa117palmcoast@gmail.com

Linda 386-295-0486

lindadoup@att.net



MEMBERSHIP APPLICATION

New Membership Renewal

Check if you have paid CPSA National

NAME: _____

ADDRESS: _____

CITY: _____ STATE: _____

ZIP CODE: _____

EMAIL: (Please print) _____

PHONE(s): _____ (Home) _____ (Cell)

- Annual chapter dues are **\$20**.
- Membership year runs from November 1st to October 31st.
- Applications for CPSA National can be obtained through the website: www.cpsa.org

GO TO THE WEBSITE cpsa117.org/membership to complete the online form.

Then to the Store page to complete the payment. Thank you!