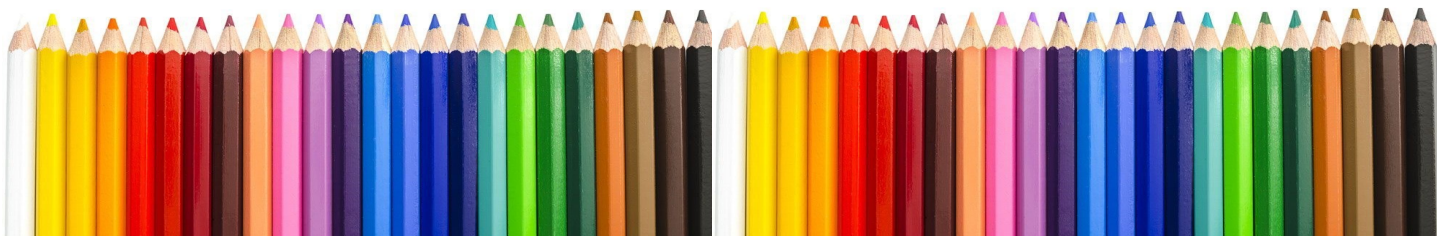


# Pressing the Point

July 2021



District Chapter 117 | St. Augustine FL



**We meet on the 3<sup>rd</sup> Sunday of each month at 1:00 PM (except July & August).**  
**Please check the website for any scheduling changes. [www.cpsa117.org](http://www.cpsa117.org)**



District Chapter 117 | St. Augustine FL



Hiding from the relentless Florida rain or the hot weather under your favorite fungi? Come out and join us on Zoom for our annual chapter workshop in July. We will **NOT** have a regular monthly chapter meeting in July. Instead, we'll be spending the meeting weekend with **Mark Menendez** learning about making color choices and improving our portrait skills.

For more information and to register visit the chapter website at:

<https://www.cpsa117.org/workshop/>

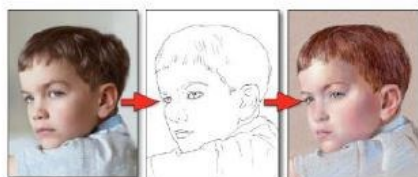
## JULY CHALLENGE

Although we will not have a July meeting, we will still have a Challenge project. This time, you are on your own to draw an eye (or 2). Your subject can be an animal, bird, reptile, fish, human - any eye you choose. It must be an eye from something living - not the letter "I" or a needle eye, etc. July Eyes will be due to AJ or Pat by August 14, 2021.

**Members:**  
Don't forget to submit your June Challenge drawings of wood to AJ or Pat by **JULY 15th!**



**Making Color Choices with Colored Pencil**  
10AM-5PM EST- July 16, 2021



**Portraits in Colored Pencil**  
10AM-5PM EST, July 17-18, 2021

## Welcome New Members

**Mattea Truppe**

**Louise Cecio**

**Gail Clements ...**

all started out attending as a guests. We are so happy to have you as members!

**Welcome!**

## Make a Note ...

- \* **No meeting** (Zoom or otherwise) in **July**. Do an **Eye!**
- \* **Menendez Workshops July 16-18**
- \* **August** "get together", no chapter business, just a delightful demo and socializing! Aug 15, 1:00 est.

**Check below for more info**

[July Meeting](#)

[June Recap](#)

[Info to Tuck Away](#)

[Member Awards](#)

[Classes](#)

## Chapter Meeting

**July** ~ Here in Florida the Snowbirds have flown North for the season. The rest of us in the South and West are just trying to keep cool or perhaps fitting in a trip to see family (at long last).

Please note ~ there is **NO meeting in July**. However, many of us will see each other on Zoom for the Mark Menendez workshops. For **August**, we will have an informal “**get together**” (no Chapter business) on **August 15, at 1:00 pm EST via Zoom** (the Zoom room will open at 12:30). Here’s what we will be doing:

- ◆ **For July, do an eye** ~ any eye, human or other animal; can be just a few inches square. Have submitted by August 15, if possible. Note: this is part of the **monthly challenge**!
- ◆ **For August, Jo Ann Eurall** will be our presenter for a demonstration of “**Water.**” This is a **texture** study, not a full blown project. So, you may simply relax, sit back and observe the demo, **or**, grab some pencils and draw along with Jo Ann. Suggested supply list and sample photo to be distributed later. This is part of the **monthly challenge** program for this year
- ◆ Be sure to submit your **June** challenge photos (wood) to either Pat (pat42@pme.com) or AJ (cpsa117staug@gmail.com).
- ◆ **Challenge Note: Everyone** is invited to either submit a photo of your work or you can hold it up during the meeting. The one rule is your submission must have been done during and/or after the Chapter meeting (no prior work). Completing each challenge this year makes you eligible for a drawing for a prize (gift card). But, more importantly, it will serve to strengthen your own skill set as you move forward with your colored pencil endeavors.

***Have a wonderful summer and keep creating!***

### **Zoom Info:**

Remember, ***an email invitation will be sent to every member or guest with the link for the meeting.*** You will click on the link and then join in. Feel free to invite someone to attend with you ~ **all are welcome.**

To show your work, you can simply hold the piece up in front of your webcam. **OR**, you can email a photo of the piece to either **Pat Lentine** (pat42@me.com) or **AJ** (cpsa117staug@gmail.com) and we will display them for you.

Problems joining that day? Pat (407) 758-4437. AJ (386) 283-2433.

## **June Meeting Recap**

There was a great turnout for the June meeting. **Linda Doup**, President, welcomed our guests from other chapters and CPPG ~ and introduced the Board members present. We also went around the “room” to see where everyone is residing. All parts of the country were represented, wonderful!

The July 2021 Chapter sponsored workshops with **Mark Menendez** were highlighted again. Registration is now open to all. The dates again are **July 16, 17, and 18** (Fri, Sat, Sun).

**Pat Lentine** talked about the July and August plans. **No meeting in July** (due to the workshops), but there will be a challenge ~ **eyes!** Draw any eye (or eyes), human or any other animal. Can be small, just a few inches square. Turn in before the August meeting.

For **August**, there will be an informal “get together” (not a regular meeting) with a demonstration by Jo **Ann Eurell** on “**Water.**” Expect a relaxed and social time.

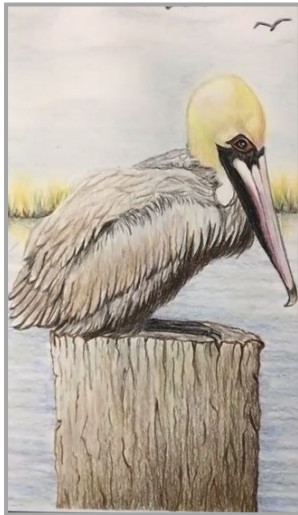
Pat went on to show the **Reflection** challenge entries. Thank you to Linda Bishop, Mahiba Vincent, Kathy McLean, Karen Zier, Kathy Viehe, Beth Harper, and Denise Morton. **Liz Monaco** (instructor) was pleased with the results!

**Kathi Darby** encouraged everyone to utilize the Facebook page as a place to share in process or completed work **AJ** reminded everyone who wishes to have a gallery page on the website to submit a write up and some photos.

For the program, and monthly challenge, **Kathi Darby** presented a very interesting program on “**Wood, Smooth & Rough.**” **AJ** introduced **Kathi** noting her long tenure (since 2008) with both CPSA and FCAL. Kathi has been a popular local teacher for many years and serves as our **Membership Director**. We all found that there is more to wood than we expected with this very enjoyable and detailed demonstration.

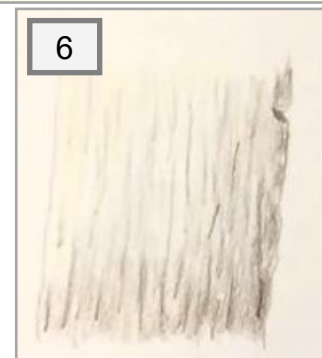
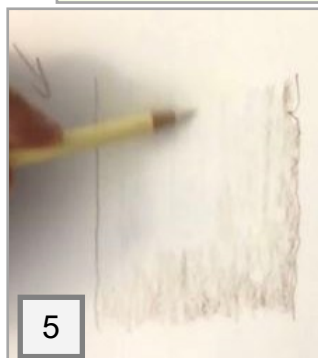
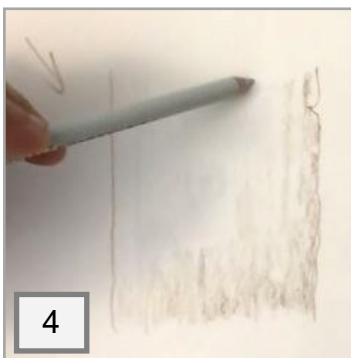
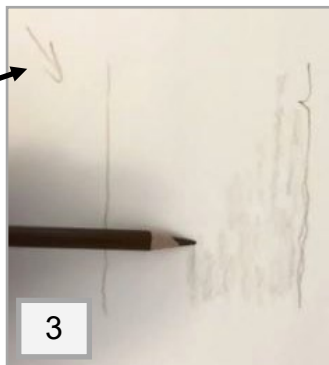
What a wonderful and dynamic meeting. Thanks to everyone for participating. And a **special thanks goes to Kathi** for her presentation. Don't forget to complete your own wood piece to submit during July! We'll show everything at the August meeting.

## Wood ~ Smooth & Rough



Picture numbers follow  
the Tip sheet

Light direction  
starts from  
upper left

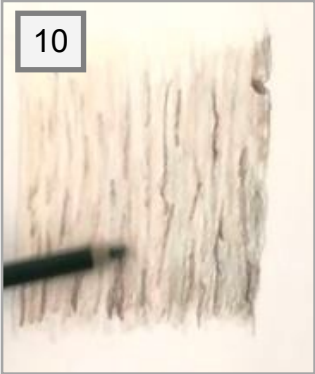
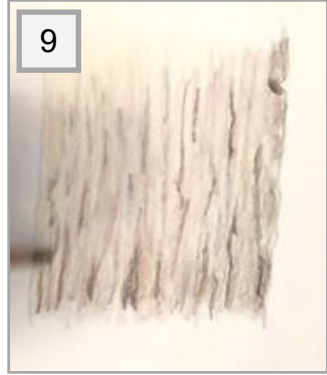


## Tips: ROUGH ~ PILING SAMPLE

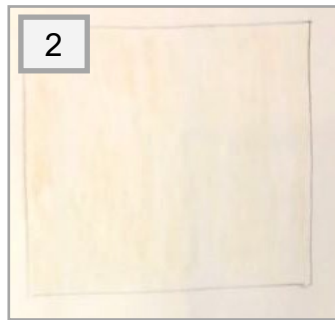
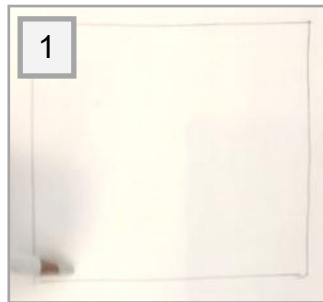
1. Consider the light source. Adjust colors for an aged look or new wood.
2. Draw with the grain, even when curved.
3. **Light Umber** - from light side to dark side.
4. **Cool Gray 10%** - wash light to dark, overlap.
5. **Cream** - wash light to dark, under painting.
6. **Sepia** - on dark side, strokes, not wash.
7. **Sand** - wash and strokes, to warm up.
8. **Burnt Ochre** - cracks on light side.
9. **Dark Umber** - cracks on dark side, shadows.
10. **Grass Green** - wash, scattered over lower portion (close to water).
11. Can warm up or gray down. **Ginger Root** from center outward. **Chocolate** or **Goldenrod** will warm up.
12. For weathered look, **Cool Gray 70%** or **Ebony** - wash.
13. Top of piling - sketch in with **Sepia**.
14. **Dark Umber** - thicken up top lines.
15. Draw in the wood rings on top.
16. Warm up with **Burnt Ochre** or **Cool Gray 10%**.
17. Gray down the light side.
18. Sharpen up the cracks.
19. No solvent - want to keep the roughness.
20. But can use cotton swab to blend vertically.

Wood ~ Smooth & Rough

Rough continued



## Wood ~ Smooth & Rough



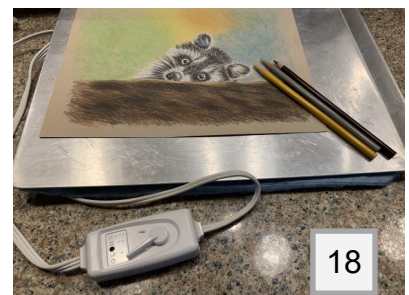
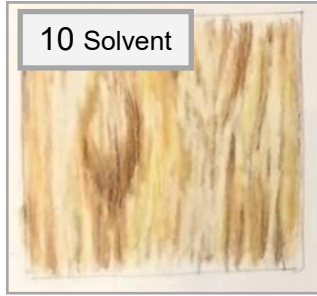
## Tips: SMOOTH ~ PINE SAMPLE

1. Start with **White**, random over area. Will create highlights.
2. **Eggshell** - wash over entire area. Can use Cream or Sand also.
3. **Yellow Ochre** - top to bottom, but emphasize the knots. Can use Goldenrod also.
4. **Goldenrod** - use strokes to build the grain. Follow the curves of the grain.
5. **Burnt Ochre** - work the knots.
6. **Light Umber** - strokes and knots.
7. **Dark Umber** - create layers and contrast.
8. **Cream** - overall wash, pulls colors together.
9. **Cadmium Orange** or **Sunburst Yellow** - sparingly around knots and darker areas to warm up.
10. **Solvent** (Gamsol recommended) - use a QTip. **Start with lightest colors**, then to dark colors.
11. Wash again - **Cream, Goldenrod, Light Umber**.
12. **Burnish** with **White** all over.
13. Go back with **Cream** to fill any gaps.
14. At this point, can be finished. But you can go back with solvent if needed.
15. Wash with **Sienna Brown**.
16. Repeat steps until you are satisfied. Should appear very smooth.
17. Can use an **Icarus Board**, but very expensive.
18. Try a **hack** with a cookie sheet (anodized steel) or glass over a heating pad (with variable settings).

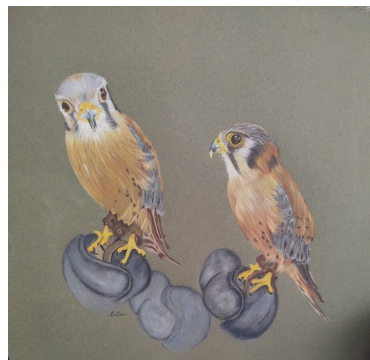
Picture numbers follow  
the Tip sheet

Wood ~ Smooth & Rough

Smooth continued



**Thank you for sharing: Linda Bishop, Karen Zier, Pat Lentine (left to right).**



## Member Awards

### Congratulations ~ John Giuseppi

**Honors:** Selected for  
**2021/22 Artists for Conservation Annual Exhibit and International Gallery Tour**  
*The Artists for Conservation Festival 2021*  
VanDusen Botanical Garden - Vancouver, British Columbia, Canada  
*The Artists for Conservation Tour 2021/2022*  
Arizona-Sonora Desert Museum - Tucson, AZ (add'l venues/schedule TBA)



Askari Wa Kifaru - "The Rhino's Guard" (Red-Billed Oxpecker)

**John Giuseppi**

Strathmore 400 Bristol Vellum - Prismacolor Colored Pencil - 17" x 12"  
reference photo - permission of Anthony Goldman

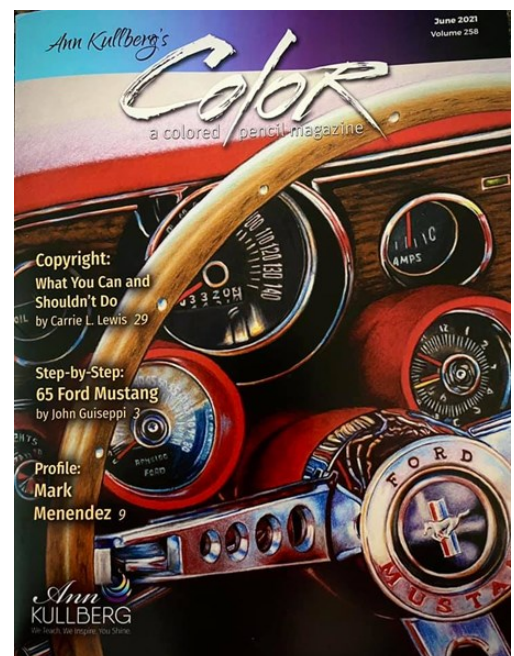
June 2021 – Ann Kullberg's Color  
Cover art and article "Step-by-Step: 65 Ford Mustang."



Bay Area 14 Winners



Best Drawing, John Giuseppi, "Screaming Eagle"







**Award of Merit 3**  
**Kathleen Smith**  
Colored pencils, 25" x 16"

**Congratulations ~  
Kathy Smith !**



**Kathy Smith** has been commissioned to illustrate a children's book entitled *What If?* She notes it's her biggest project yet! Congratulations Kathy!

## ***Congratulations ~ Mark Menendez & Bob Sena !***

November 2021 – **Artists Magazine**

Congratulations to **Robert Sena**. His drawing, "**Wood Stork**," will be published in "**The Best of Drawing**" -a special edition of *Artists Magazine* due out late November 2021.



"So honored to have a profile article in the June issue of Ann Kullberg's "**COLOR Magazine**," where I relate my exciting journey in art instruction." Mark <https://annkullberg.com/pages/color-magazine-subscribe...>

My art is featured in the June issue

Ann Kullberg's  
**Color**  
a colored pencil magazine

Find it at [annkullberg.com](https://annkullberg.com)

## *Info to Tuck Away*

“In 2019 **Faber-Castell** made a change to our "flesh and skin" color names.

There were also color name changes some time ago (prior to the year 2000). These colors were re-named in an effort to offer products that the artist is familiar with when working with other mediums in the market.

Name changes do not occur frequently and additional changes should not be expected. The quality and performance of the product itself remains the same and has not been altered.”

<b>Faber-Castell Color Name Changes</b>					
Old Name	Color #	New Name			
Dark Flesh	130	Salmon	Light Carmine	127	Pink Carmine
Medium Flesh	131	Coral	Rose Madder Lake	128	Light Purple Pink
Light Flesh	132	Beige Red	Wine Red	133	Magenta
Medium Skin (Pitt Artist Pen)	116	Apricot	Dark Magenta	125	Middle Purple Pink
Light Skin (Pitt Artist Pen)	114	Pale Pink	Dark Violet	136	Purple Violet
Geranium Lake	121	Pale Geranium Lake	Prussian Blue	151	Helioblue-Reddish
Magenta	134	Crimson	Deep Cobalt	143	Cobalt Blue
Apple Green	170	May Green	Light Cobalt Blue	144	Cobalt Blue-Greenish
Hunter Green	165	Juniper Green	Zinc Blue	110	Phthalo Blue
Grey Green	172	Earth Green	Dark Phthalo Blue	152	Middle Phthalo Blue
Purple	194	Red-Violet	Oriental Blue	149	Bluish Turquoise
Umber	180	Raw Umber	Night Green	155	Helio Turquoise
Light Ochre	185	Naples Yellow	Peacock Blue	153	Cobalt Turquoise
Zinc Yellow	104	Light Yellow Glaze	Aquamarine	154	Light Cobalt Turquoise
Lemon Cadmium	105	Light Cadmium Yellow	Blue Green	156	Cobalt Green
Light Chrome	106	Light Chrome Yellow	Sea Green	158	Deep Cobalt Green
Lemon	107	Cadmium Yellow	Viridian	161	Phthalo Green
Canary Yellow	108	Dark Cadmium Yellow	True Green	162	Light Phthalo Green
Orange Yellow	109	Dark Chrome Yellow	Sap Green	167	Permanent Green Olive
Tangerine	111	Cadmium Orange	Olive Green	173	Olive Green Yellowish
Light Orange	113	Orange Glaze	Moss Green	168	Earth Green Yellowish
Dark Orange	115	Dark Cadmium Orange	Cedar Green	174	Chrome Green Opaque
Vermillion	117	Light Cadmium Red	Red Violet	135	Light Red-Violet
Scarlet Lake	118	Scarlet Red	Golden Ochre	183	Light Yellow Ochre
Dark Carmine	126	Permanent Carmine	Ochre	184	Dark Naples Ochre
			Sepia Light	177	Walnut Brown
			Indian	192	India

### *Just In Case You Missed It ...*

“We have recently become aware of the discontinuation, by **Sanford**, of the **Prismacolor Art Stix™** product. Many CPSA members find this product useful and may want to find suppliers that still have supplies before it is too late. You may want to notify members of this discontinuation.” Karen Saleen, District Chapter Development Director CPSA

*A real blow especially to those doing Subtraction. What were they thinking?*

*If you hear of a replacement or substitute, let us know !!*

## Classes Offered by Members

### Kathi Darby

Off for the summer.

### Bonnie Haney

Off for the summer (Flower City Art Center, Rochester, NY).

### Hanneke Jevons

**Open Studio** for colored pencil in my home on Wednesdays and Fridays from 2:00 to 4:00 PM. Space limited to 4 students. Please contact Hanneke at: [han-noart@bellsouth.net](mailto:han-noart@bellsouth.net)

### Pat Lentine

**Fox (colored pencil): July 24, virtual, 10:00-3:30 EST.** This little guy is painted on Canson MiTeintes paper using one box of 12 General Pastel Pencils. He comes with 7 step by step photos.



**Colored Pencil and Pastel Artists:** If you would like some input on your projects please join us in our online Zoom class. Each student brings to class a project they want to start or have started. Individual input on each project with each student. Class limited to 10 students.

Wednesday 1:00 - 3:00. You can sign up each week via my website

<https://www.patlentine.com/> or Contact Pat at: [pat@patlentine.com](mailto:pat@patlentine.com) and 407-758-4437

### Kathie Miranda

**Botanical Illustration:** ongoing at the Bartlett Arboretum, Stamford, CT. Learn basic conventions to portray the beauty of plants in a realistic manner. Limit 12 artists. Details at <http://www.bartlettarboretum.org/events-concerts>.

**Drawing Plants in Graphite:** in-person, 6 Tuesdays starting September 7, 10:00-1:00 EST.

**Drawing Flowering Plants in Colored Pencil:** virtual/hybrid, 6 Thursdays starting September 9, 10:00-1:00 EST.

### Liz Monaco

**River House** (St. John's Co. Council on Aging, [coastjc.org](http://coastjc.org)) ~ Colored Pencil, Wednesdays 1:30 to 3:30 (179 Marine Street, St. Augustine)

If you are offering instruction, please let us know so your information can be included in future issues.

## Our Board Members

CPSA-DC 117

**President:**

Linda Doup

**Vice President:**

Pat Lentine

**Secretary:**

Kathy Viehe

**Treasurer:**

Judy Madigan

**Membership:**

Kathi Darby

**Newsletter/Website:**

AJ Barr

**Historian:**

Kathy Viehe

**Publicity:**

Jo Ann Eurell

**President Emeritus:**

Hanneke Jevons

**President Emeritus:**

Bill Shoemaker

CPSA remains firmly dedicated to the fundamental principles of inclusion and diversity, and to racial justice as an inalienable human right.

### Newsletter Contact Info:

For submissions and requests to be profiled, please contact either AJ or Linda.

**AJ** 386-283-2433  
msajbarr@earthlink.net

**Linda** 386-295-0486  
lindadoup@att.net

## Membership Information

### Chapter Membership Benefits:

- Networking with other colored pencil artists
- Participation in sketch groups
- Member discount rate for local workshops
- Chapter newsletter
- Opportunities for exhibits and event participation

*A member of the local CPSA DC117 St. Augustine Chapter must also be a member of the Colored Pencil Society of America.*

### The benefits of CPSA membership are worth it:

- A national newsletter, To The Point, twice yearly.
- Product research, pigment identification, lightfast information
- Lower entry fee for annual CPSA exhibitions
- Lower rate for workshops at CPSA Convention
- International membership networking directory
- District Chapters for local and regional networking
- Free link to your website
- Ability to earn Signature status
- NOTE: Only CPSA members who have attained Signature Status may use the initials CPSA or CPX after their name.



### MEMBERSHIP APPLICATION

New Membership       Renewal

Check if you have paid CPSA National

NAME: \_\_\_\_\_

ADDRESS: \_\_\_\_\_

CITY: \_\_\_\_\_ STATE: \_\_\_\_\_

ZIP CODE: \_\_\_\_\_

EMAIL: (Please print) \_\_\_\_\_

PHONE(s): \_\_\_\_\_ (Home) \_\_\_\_\_ (Cell)

- Annual chapter dues are **\$20**.
- Membership year runs from November 1st to October 31st.
- Applications for CPSA National can be obtained through the website: [www.cpsa.org](http://www.cpsa.org)

**GO TO THE WEBSITE [cpsa117.org/membership](http://cpsa117.org/membership) to complete the online form.**

**Then to the Store page to complete the payment. Thank you!**